

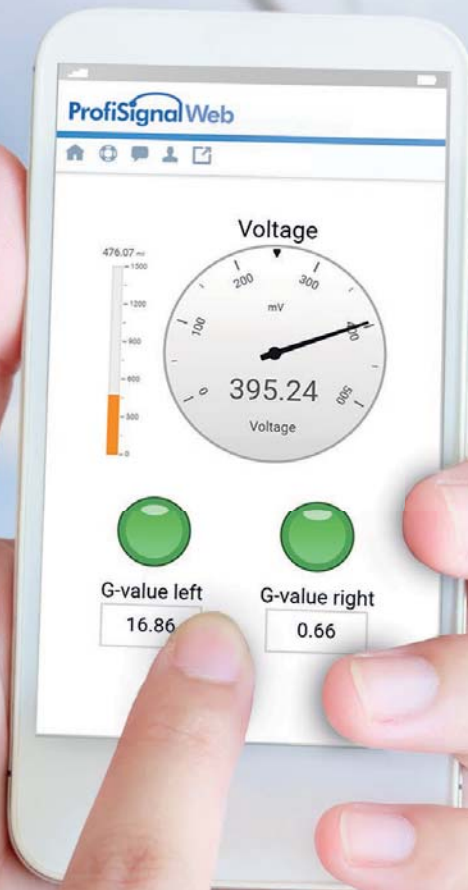


WEB-BASED SOFTWARE

Intuitive. Innovative. Mobile.



SMART DATA IN MEASUREMENT TECHNOLOGY



A blurred background image showing a wind turbine in a green field under a blue sky with light clouds.

Visualisation for your Industrial IoT applications

The 4th industrial revolution is well underway. The volume of data being generated daily is increasing exponentially. Such data comes from various sources and needs to be acquired, merged and analysed. Delphin – as a measurement technology specialist – has risen to the challenge. The latest, state-of-the-art ProfiSignal Web now offers you client-server software as middleware to link data acquisition at the edge to cloud-based data storage / analysis.

Important customer needs such as viewing data from anywhere on the world and on-site process monitoring have been directly integrated into the development of the software. ProfiSignal Web is a purely web-based client-server system and can therefore run on any mobile device (tablet, smartphone) as well as desktop PCs and laptops. The software's main plus points include modern graphics, transparent and intuitive operation and the option to instantly transform your mobile device into a dashboard.

Intelligent measurement technology has never been so simple and so mobile.

LIVE AND MOBILE

Do you need to acquire data across the world and view it on your tablet or smartphone wherever you are? Do you want to check your machinery's current operational parameters "on the go" using your tablet or smartphone? Are you looking for a professional, mobile system for the visualisation of your measurement data and processes which doesn't require installation and simply uses the browser in your mobile device?

Then you will be impressed by ProfiSignal Web's future-proof screen design as well as its intuitive operation concept responsive to any type of user device. Specialists will benefit through the clear structures and live data. Inexperienced users without specialist know-how are also able to use the software. Thanks to modern HTML5 software architecture, the user interface is fully platform independent and can run in any type of browser on any type of user device.

You can therefore start using it instantly, wherever you are. Intelligent measurement data and process visualisation for your applications.

Cloud visualisation using a mobile dashboard



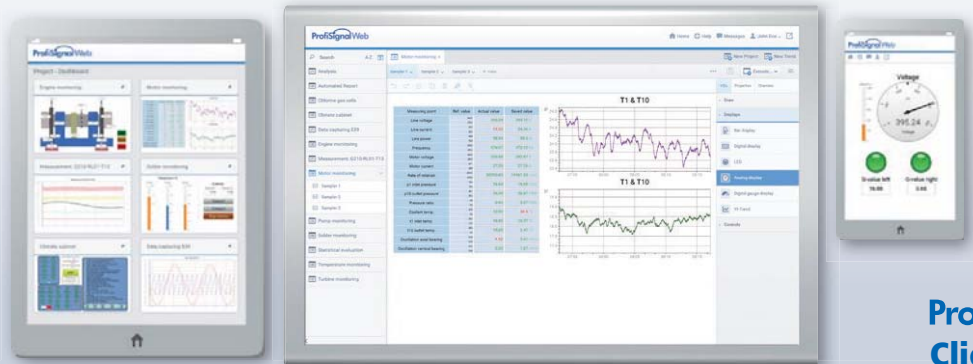


Product features

- Create specific projects for visualisation of your processes and monitoring applications
- Choice of a multitude of visualisation elements such as tachometers, bar graphs, LEDs, digital displays etc.
- Optimised trend portrayal for the fast visualisation of live and historical data
- Options to install the web server and store data within a measurement device, in the cloud or on a server in your company intranet
- Web clients do not need to be installed
- Can be run on any browser and any user device
- Display and operation optimised for use on both desktop PCs as well as mobile devices
- Optimal user experience via modern design and intuitive ease of use
- Multiuser concept: multiple users can access the same projects simultaneously
- Range of interfaces: in addition to Delphin hardware, also compatible with many intelligent sensors as well as third-party measurement equipment

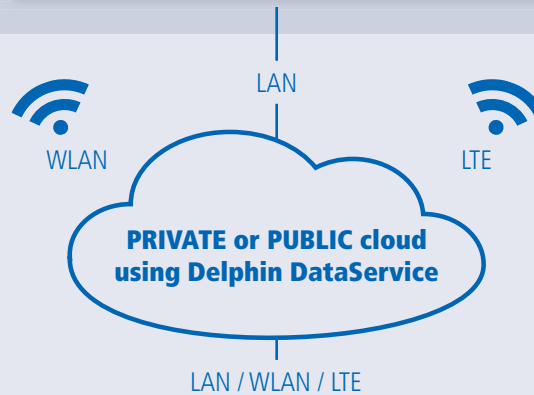
ProfiSignalWeb FOR SERVERS

Visualisation and analysis



ProfiSignalWeb Clients

Storage and distribution

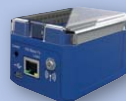


ProfiSignalWeb Server

Data acquisition



Expert Logger



Loggito Series



Third-party device
Modbus



Intelligent sensors
MQTT / OPC UA

Machines, systems, test stands

Worldwide

measurement data and
process visualisation on
any user device

Do your measurement requirements demand decentralised acquisition and access to measurement data from any location? ProfiSignal Web for servers enables you to collect data from around the world and to view it anywhere on any type of user device. Ideal for:

- Field trial systems
- Test drives
- Condition monitoring of remote machinery, systems and buildings
- General remote measurement and monitoring requirements
- Centralised data storage requirements
- Weather stations and other environmental technology applications

For international applications, attention was given from the outset to multilingualism. An intelligent system of permissions and user management is used. Unique identification enables measurement data and user-based data – such as personal configuration settings and global / local views – to be stored in the web server, and sent to the user device only on first time usage.

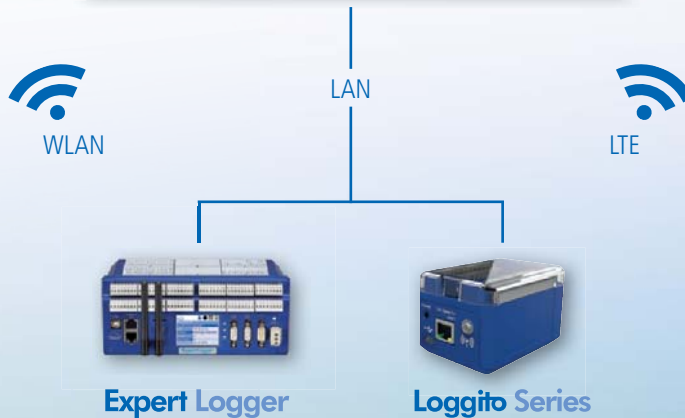
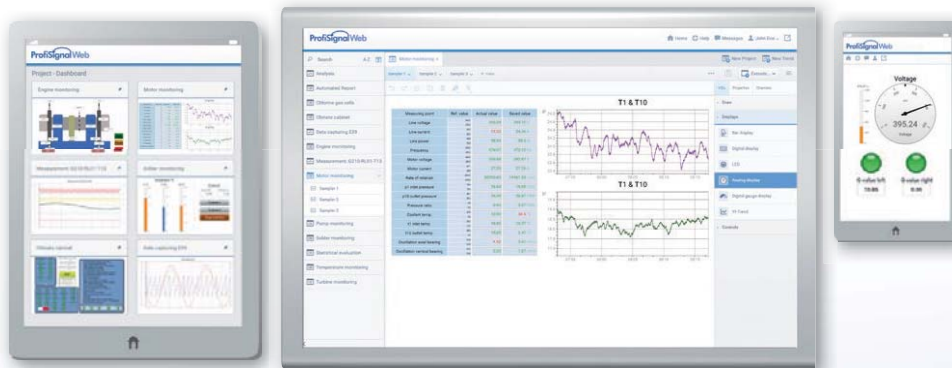
Your mobile device as a **dashboard**

Do you want to connect to your data acquisition system directly using a smartphone or tablet thereby enabling you to access and view current machine data and process parameters “on the go”? ProfiSignalWeb for measurement devices is then the ideal solution for applications such as:

- **Mobile fault analysis**
- **Mobile condition monitoring**
- **Servicing and maintenance**
- **Managing ongoing testing procedures**
- **Checking energy consumption**
- **Downloading and analysing stored measurement data**

Simply install the Delphin software on the main logger module of your acquisition system and connect to your system directly using any type of mobile device (laptop, tablet, smartphone). Personalised dashboards give you an instant overview of your current process parameters and enable live and historical data to be displayed in trend diagrams. An editor is available for tablet and desktop versions for inserting visualisation elements within screen views. A major advantage is that software does not need to be installed on your device – all that is required is any type of browser.

FAST ON-SITE ACCESS



Web server and data storage integrated within the device



INTUITIVE. PERSONALISED. FLEXIBLE.

ProfiSignal Web gives you a simple method to view complex processes and testing procedures. You get a large choice of display objects which you can adapt and combine according to your needs.

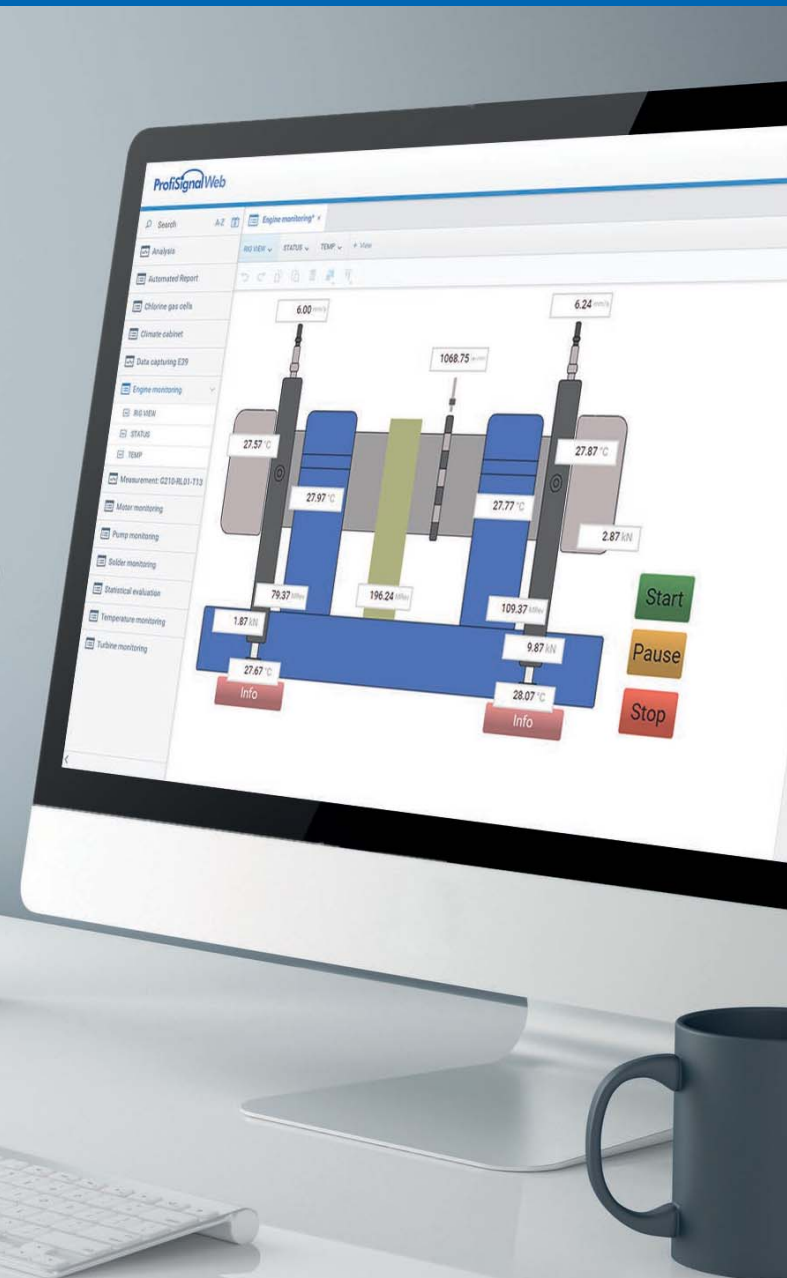
To display current system parameters, simply insert display elements in the screen view at the relevant measuring points linked to the corresponding measurement channels.

To perform complex monitoring and observation tasks, simply create a screen view using the wide range of display elements. A project can be made up of multiple screen views which users can switch between as required. Input elements are also available to control processes or systems and enable users to set channel values and thereby regulate outputs.

An especially powerful feature of ProfiSignal Web is the visualisation of trends. This allows the seamless visualisation of live and historical measurement data as well as flicker-free scrolling across any time range.

Range of functions





General functions

- Client-server application to create complex process views using personalised dashboards
- Web server and data storage located within the measurement device, in the cloud or in a company's intranet
- No web frontend installation necessary, runs within a browser
- Multiuser concept: multiple clients are able to access the same project
- Managing access rights using a system of permissions and user management

Diagrams

- Y(t) diagrams
- Multiple and separate y-axes in a single diagram
- Portrayal of live and historical data
- Zoom functions
- Print function

Graphical display elements

- Bar charts
- Analog and digital displays
- Geometric objects (circle, rectangular etc.)
- LEDs

Operation and control element

- Buttons, sliders
- Text input



SCIGATE AUTOMATION (S) PTE LTD

No.1 Bukit Batok Street 22 #01-01 Singapore 659592

Tel: (65) 6561 0488

Fax: (65) 6562 0588

Email: sales@scigate.com.sg

Web: www.scigate.com.sg

Business Hours: Monday - Friday 8.30am - 6.15pm

Delphin Technology AG
Lustheide 81
51427 Bergisch Gladbach · Germany

Phone +49 (0) 2204 97685-0
Fax +49 (0) 2204 97685-85
info@delphin.de · www.delphin.com

