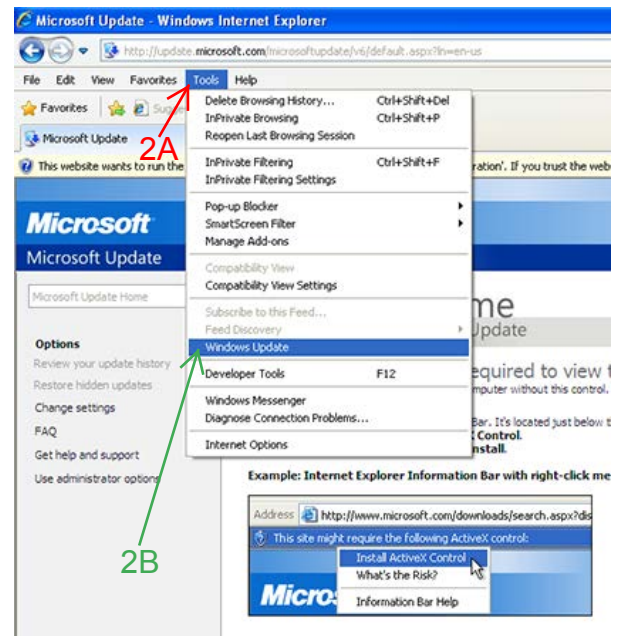


## XP Installation instructions

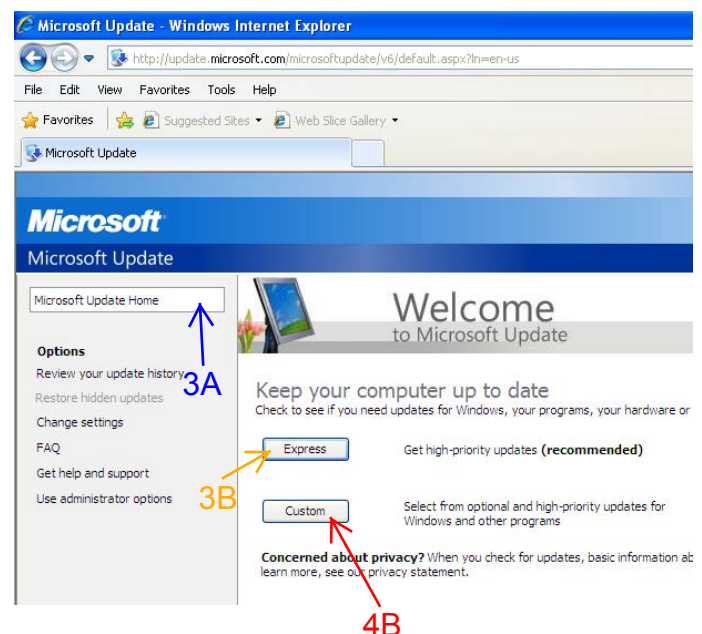
### .NET Requirements

.NET 3.5 and 3.5 Service Pack 1 must be installed first, under XP these have recently been made optional updates not important updates to install this:

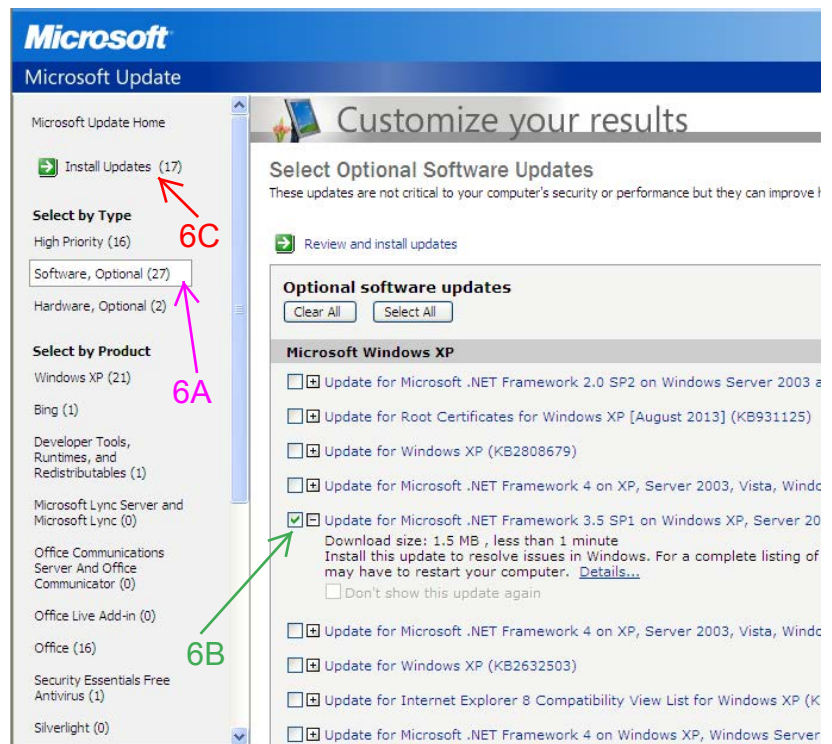
1. Run Internet Explorer (Not Firefox or any other browsers)
2. Click "Tools" (2A) then "Windows Update"(2B)



3. Click "Windows Update Home" (3A) then "Express" (3B) (normal updates make sure the main .NET 3 framework is installed; Install any updates.
4. Click "Windows Update Home" (3A) then "Custom" (4B) once windows has searched for updates if it is not already in the list the .NET 3.5 SP1 update may be in the
5. Once the express updates have installed return to "Windows Update Home" (3A) and select the "Custom" button (4B)



6. Select “software optional” (6A), the scroll till you see “Microsoft .NET Framework 3.5 Service Pack 1” (6B) and check it, then click “Install Updates” (6C), Then click “Install Updates” again to start the install.

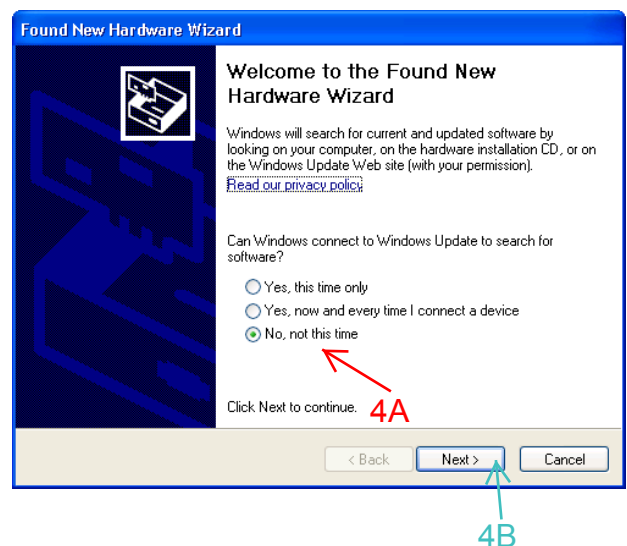


## LM506 Xp Driver installation instructions

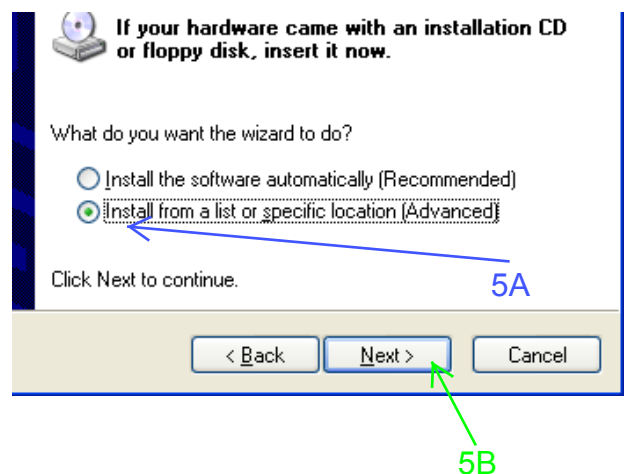


1. Download the XP LM506 Driver from the Solartron metrology website.
2. Unzip the file into a known location on the computer, it should contain 2 directories (Xp32, and Xp64)
3. Plug the LM506 into the Bluetooth slot

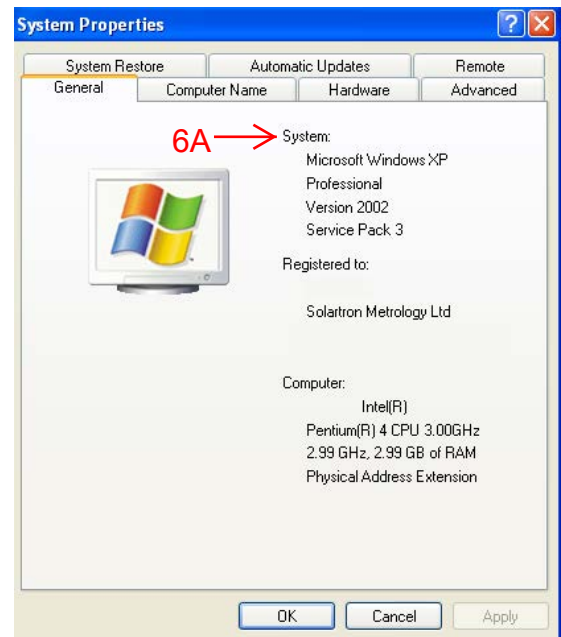
4. If the driver is not already installed Windows will prompt for it with the following screen, Select “No, not this time” (4A), then “Next” (4B)



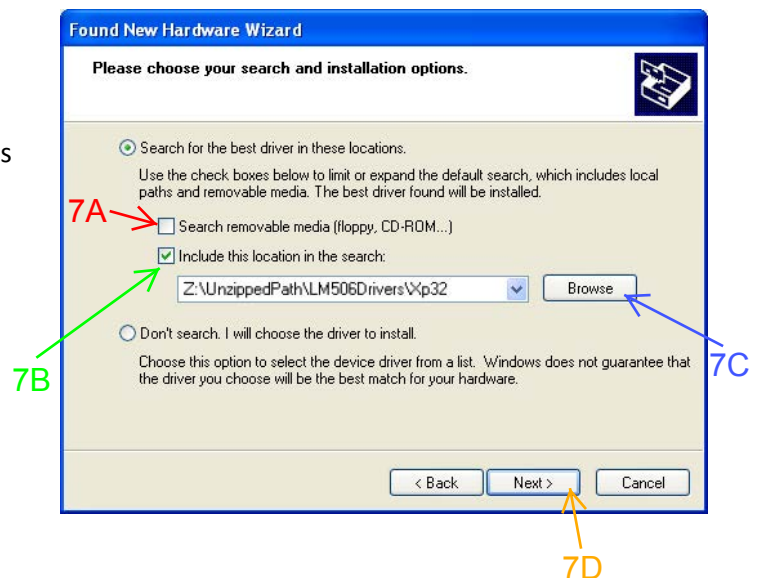
5. Select to install from a specific location (5A) then next again (5B)



6. Identify what version of XP you are running (32 or 64 bit) if you are unsure you can check by looking at the properties of “My Computer” by going into Windows Explorer, Right clicking on My Computer and clicking Properties. If line (6A) contains “Professional x64 Edition” the xp version is 64 bit otherwise it is 32 bit.



7. Uncheck “Search Removable Media” (7A), Check “Include this location” (7B), then browse (7C) and find the directory you unzipped the files to, select the subdirectory relating to the version of windows, then click “Next” (7D). The device driver should then install.



## Windows 8 Installation instructions

Install the Handtool Manager. If prompted for .NET 3.5 on the installation allow windows to install it.

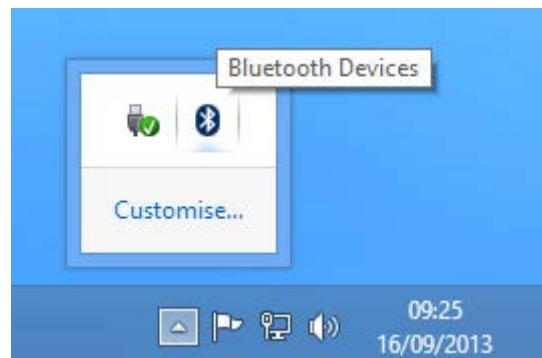
Plug the LM506 dongle.

Windows can take up to 5 minutes to set it up.

Once windows has finished installing the device, to connect the tools so the manager will be able to find them:

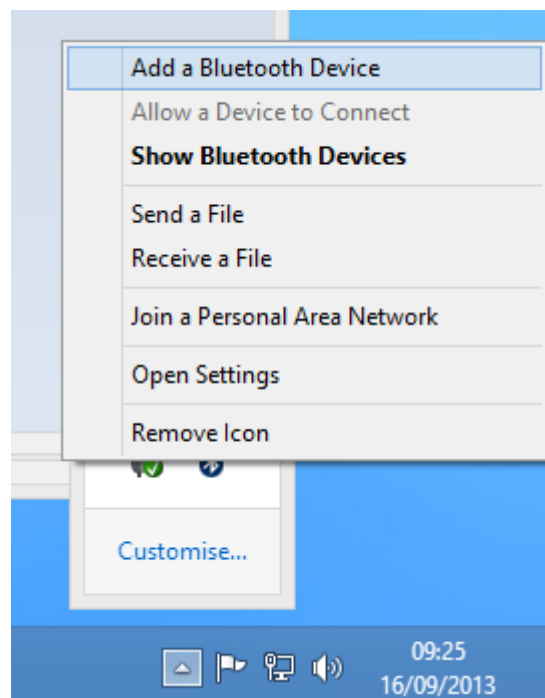
Navigate to the desktop (  + D)

On the system tray at the bottom right of the screen click the up arrow to display all the icon (as in the panel to the Right):

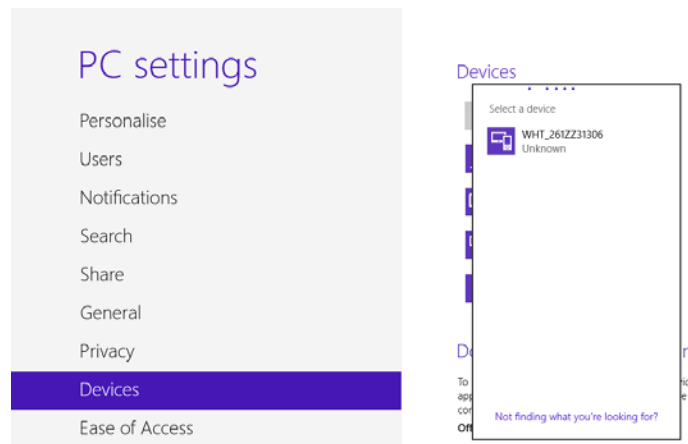


**Ensure the handtool to be found it turned on.**

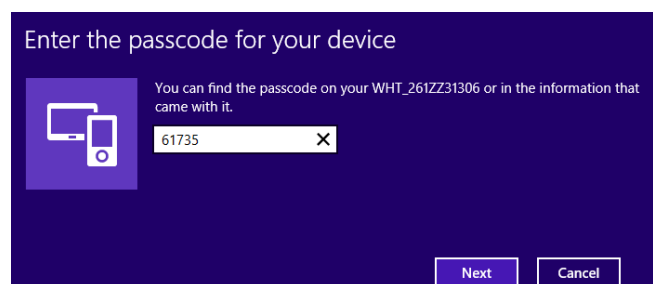
Right click on the Bluetooth B symbol and click add a Bluetooth device:



The Computer will search from Bluetooth devices:



When the Handtool is visible select it and enter the key (61735) when prompted:



Once the device is setup you must wait till the setup bars (A) have completed before the device is usable:

