



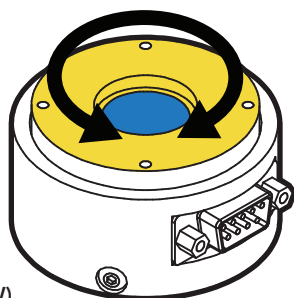
FEATURES

- Low profile with large inner diameter
- Integrated TEDS streamlines the setup of a sensor with an instrument by allowing you to bypass complicated calibration steps
- Fits a Prime Planetary Gearhead with P/N 017PLX
- Accepts NEMA 17 mounting pattern
- Strain gauge based

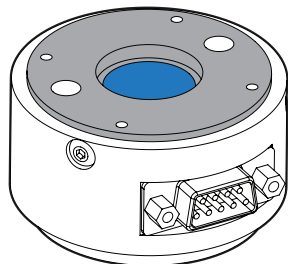
 Active end

 Non-loading surface, do not contact

 Fixed End



- Output (CCW)
+ Output (CW)



SPECIFICATIONS

PERFORMANCE

Capacity	100 in-lb [11.3 Nm]
Nonlinearity	±0.5% of RO
Hysteresis	±0.5% of RO
Nonrepeatability	±0.1% of RO

ELECTRICAL

Rated Output (RO)	1 mV/V nom
Excitation	18 max
Connection	DB9 Male

MECHANICAL

Weight (approximate)	5.6 oz [158.8 g]
Safe Overload	150% of RO
Material	Aluminum
IP Rating	IP40

TEMPERATURE

Operating Temperature	0 to 160°F (-17 to 71°C)
Compensated Temperature	60 to 160°F (15 to 72°C)
Temperature Shift Zero	±0.02% of RO/°F (0.04% of RO/°C)
Temperature Shift Span	±0.02% of Load/°F (0.04% of Load/°C)

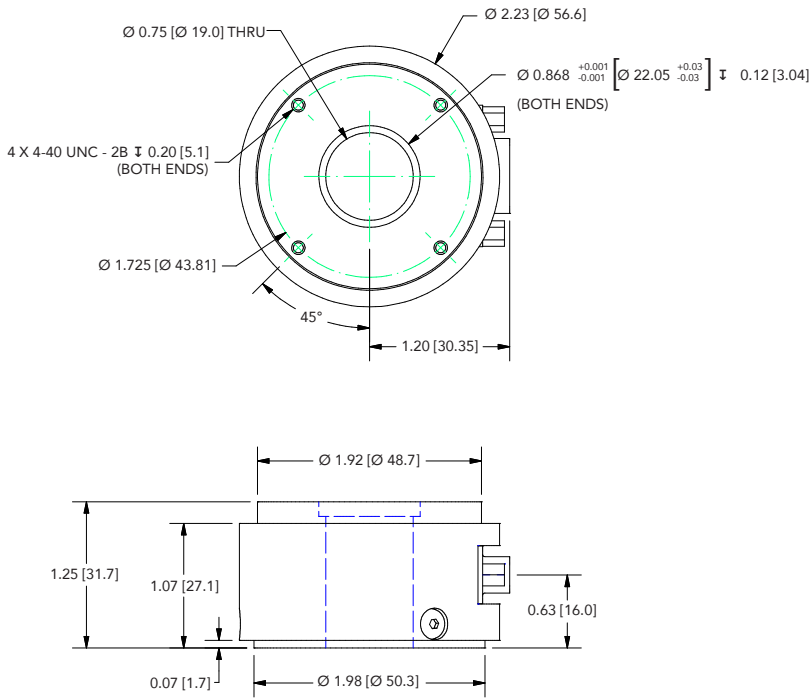
CALIBRATION

Calibration Test Excitation	10 VDC
Calibration (standard)	5-pt CW
Calibration (available)	5-pt CW & CCW
Shunt Calibration Value	60.4 kOhm




SCIGATE AUTOMATION (S) PTE LTD
 No.1 Bukit Batok Street 22 #01-01 Singapore 659592
 Tel: (65) 6561 0488 Fax: (65) 6562 0588
 Email: sales@scigate.com.sg Web: www.scigate.com.sg
 Business Hours: Monday - Friday 8.30am - 6.15pm

DIMENSIONS inches [mm]



CAPACITIES

ITEM #	in-lb	Nm	Torsional Stiffness (in-lb/rad)	Natural Frequency (Hz)
FSH04065	100	11.3	121800	5550

CONNECTOR CODE (CABLE PACKAGE WIRING CODE)

PIN	COLOR	DESCRIPTION
5	ORANGE	TEDS DATA
9	BLUE	GROUND
2	RED	+ EXCITATION
7	BLACK	- EXCITATION
1	GREEN	+ SIGNAL
6	WHITE	- SIGNAL

Drawing Number: FI1476-A

FUTEK reserves the right to modify its design and specifications without notice. Please visit <http://www.futek.com/salesterms> for complete terms and conditions.

10 Thomas, Irvine, CA 92618 USA

Tel: (949) 465-0900

Fax: (949) 465-0905

www.futek.com



U.S. Manufacturer