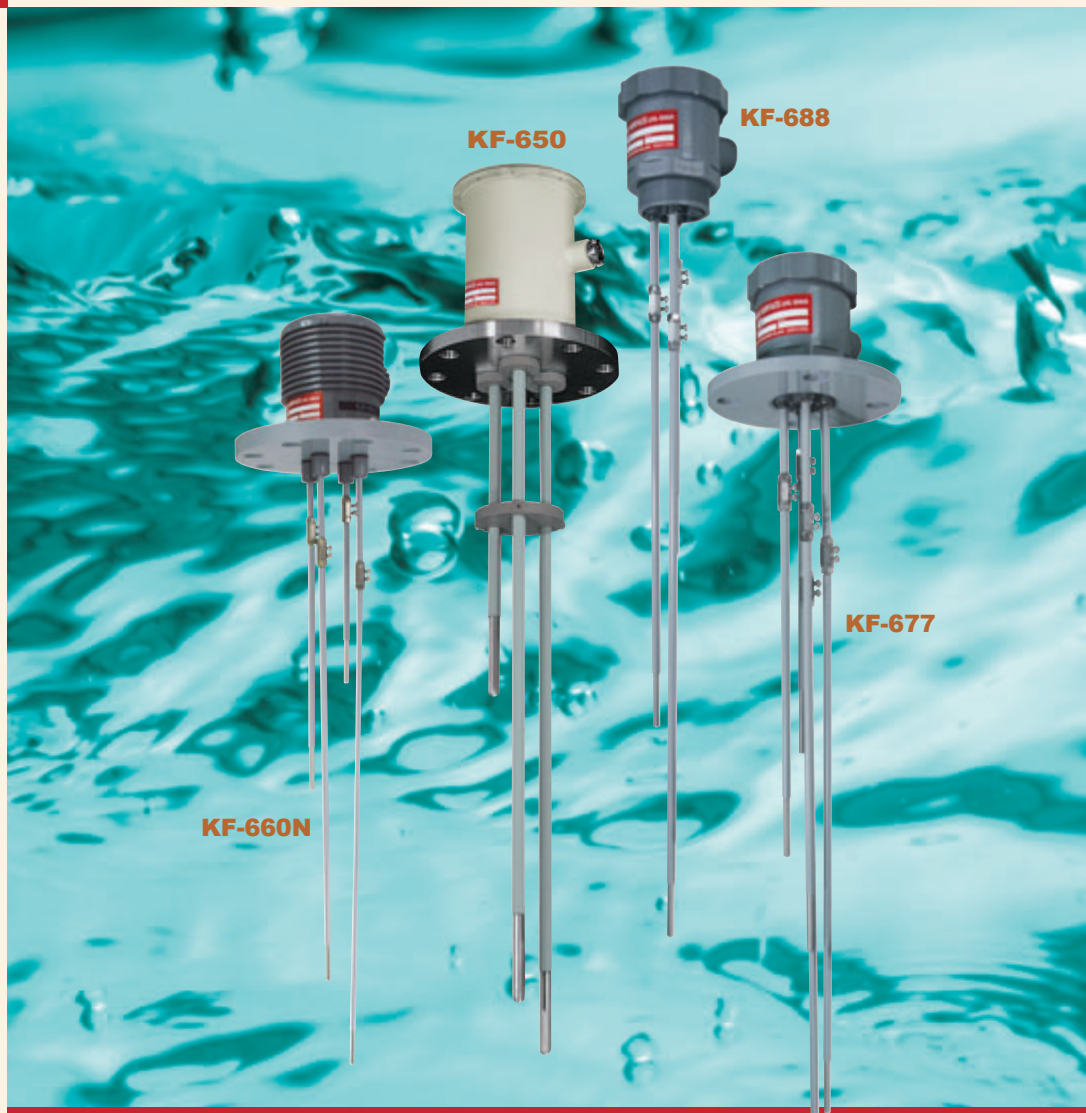


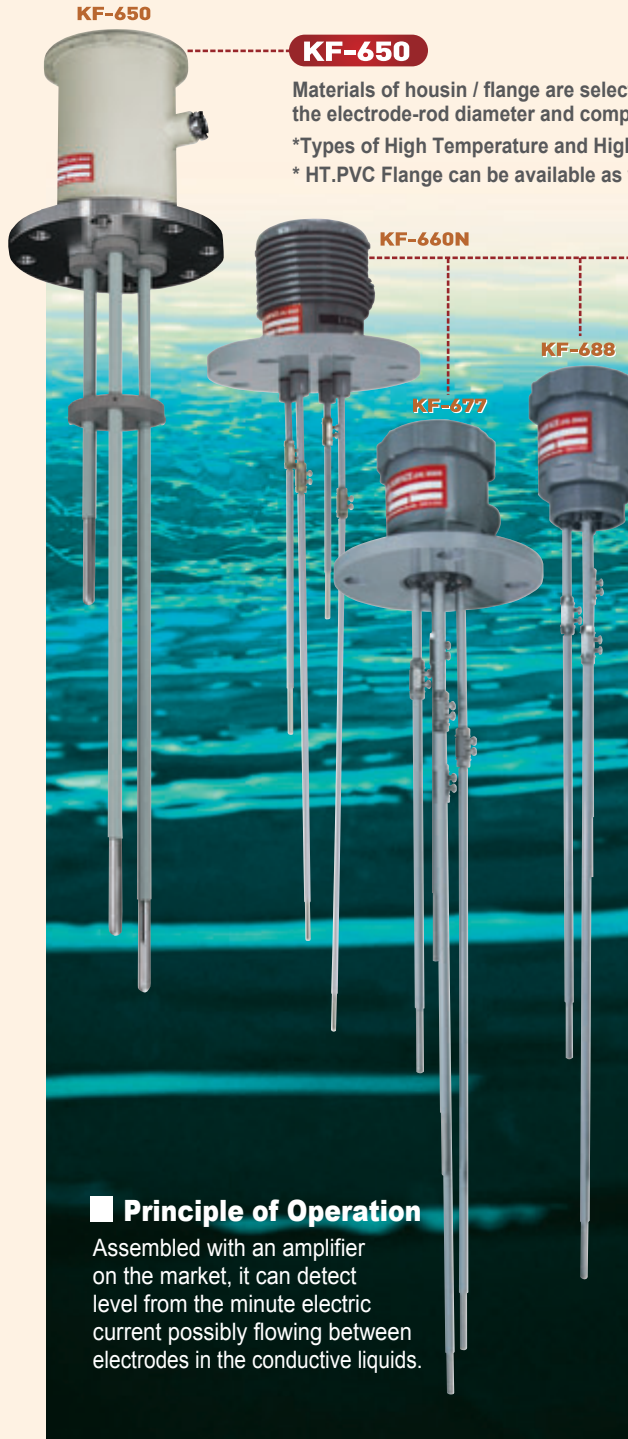
ELECTRODE TYPE LEVEL SWITCH Model **KF-600**



**Best Selling Line In Liquid Level Control - Sales Record
And Reliable Cost Performance**

KF-600 ELECTRODE TYPE LEVEL SWITCH

Liquid Control made of varied electrode materials in a sturdy housing can be applied to a variety of liquids. *Special specifications can be ordered.



KF-650

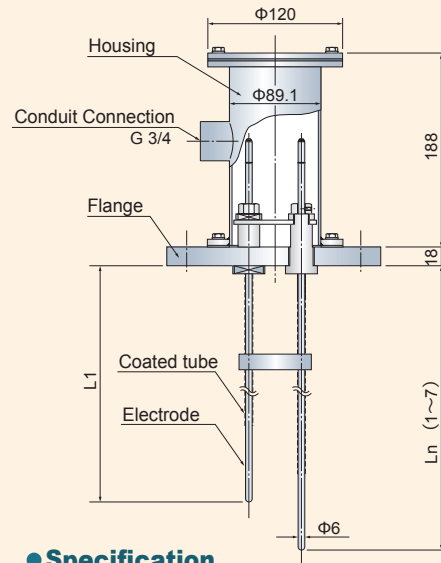
Materials of housin / flange are selectable. As for KF-650 Electrode Type Level Switch, the electrode-rod diameter and components can be selected.

- *Types of High Temperature and High Pressure (KFB640) are also available.
- * HT.PVC Flange can be available as well.

KF-660N • 677 • 688

Only available is a housing type made of PVC. The pole bolt materials of Electrode Level Switch under KF-660N/677/688 can be selected. The choice of the electrode is $\Phi 6$ in diameter only. *ASME & JPI can also be manufactured.

KF-650



● Specification

- Diameter of Electrode : $\Phi 6 / 8 / 10 / 15 / 20\text{mm}$
- Quantity of Electrode (n) : 1 - 7
- Separator : Standard, 1 each by every 2000mm
- Flange : over 100A, JIS10K
- Electrode Material : 304SS, 316SS, 316LSS, Titanium, Hastelloy C & B
- Flange Material : PVC, 400SS, 304SS, others
- Housing Material : PVC, SGP, 304SS, others
- Painted color : Housing /munsell 5Y 7/1 (SGP only), Flange / munsell 5Y 7/1 (400SS only)
- Mat. of sheathed Electrode : PVC tube, Teflon tube
- Mat. of stilling well : PVC, SGP, 304SS

*Possibly variable by $\pm 50\text{mm}$ * Electrode rod is basically an unspliced bar.
 *Coupling arrangement is possible (in case of longer rod).
 *Withstand pressure type can be available.
 *Option : Housing, Flange / hot-dip galvanizing.

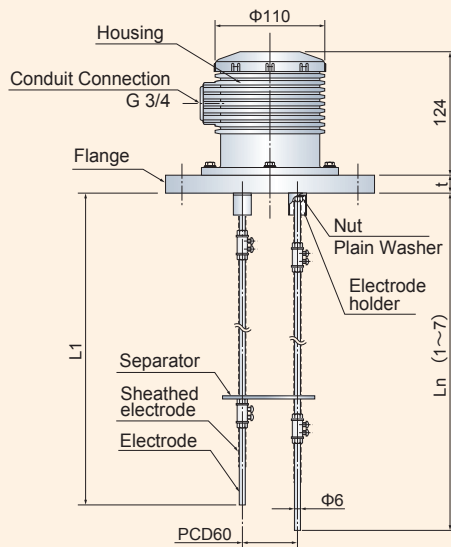
■ Principle of Operation

Assembled with an amplifier on the market, it can detect level from the minute electric current possibly flowing between electrodes in the conductive liquids.

KF-650, Size of Flange / Electrode *Square flange and ASME/JPI flange can be available.

Diameter of Electrode	$\Phi 6 / \Phi 8$	$\Phi 10 / \Phi 12$	$\Phi 15 / \Phi 20$			
Quantity of Electrode	1 - 7	1 - 3	4 - 7	1	2 - 4	5 - 7
Smallest flange = 10K JIS	100A		125A	100A	125A	200A

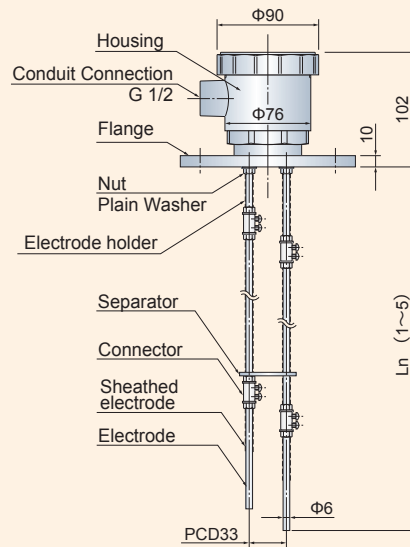
KF-660N



● Specification

- Diameter of Electrode : Φ6mm only
- Length of Electrode : Connected at every 1000mm for extension
- Quantity of Electrode (n) : 1 - 9
- Separator : Standard, 1 each by every 2000mm
- Flange : over 100A, JIS10K
- Flange Material : PVC, HT.PVC
- Housing Material : PVC

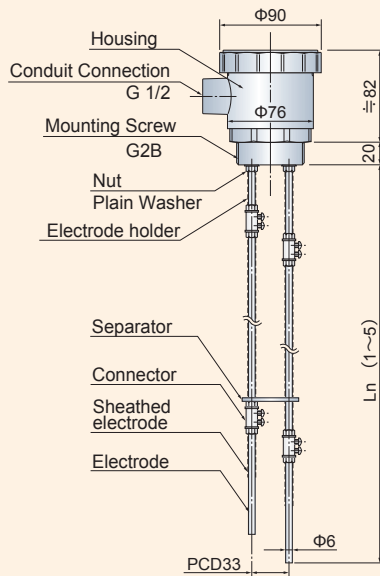
KF-677



● Specification

- Diameter of Electrode : Φ6mm only
- Length of Electrode : Connected at every 1000mm for extension
- Quantity of Electrode (n) : 1 - 5
- Separator : Standard, 1 each by every 1000mm
- Flange : over 50A - 80A, JIS10K
- Flange Material : PVC
- Housing Material : PVC

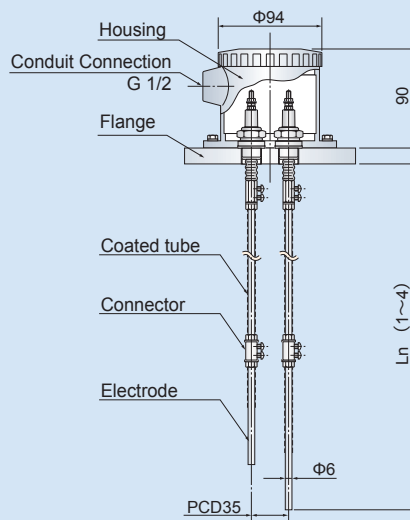
KF-688



● Specification

- Diameter of Electrode : Φ6mm only
- Length of Electrode : Connected at every 1000mm for extension
- Quantity of Electrode (n) : 1 - 5
- Separator : Standard, 1 each by every 1000mm
- Mounting Screw : G2B
- Mounting Screw Material : PVC
- Housing Material : PVC

KFB 640 Special/High Temp. High Pressure, others



● Specification

- Diameter of Electrode : Φ6mm only
- Length of Electrode : Connected at every 1000mm for extension
- Quantity of Electrode (n) : 1 - 4
- Separator : Standard, 1 each by every 1000mm
- Flange : 50A, JIS10K
- Electrode Material : 304SS, 316SS, Titanium, Hastelloy C
- Flange Material : 400SS, 304SS, 316SS
- Housing Material : AC

*When the electrode exceeds 5, use the housing for KF-650 or the like.

■ Material Table (KF-660N / -677 / -688) *Electrode consisting of hastelloy C & B is an unspliced bar.

Material of electrode rod	▶ 304SS	316SS	316LSS	Titanium	Hastelloy C	HastelloyB
Mat. of sheathed electrode	▶ PVC	Teflon-tube	others	[]
Material of separator	▶ PVC	Teflon	others	[]
Material of stilling well	▶ PVC	others	[]

Type Designation

KF-6□□-□

Quantity of Electrode = 1, 2, 3, 4, 5, 6, 7

Specification = 50

Terminal box fixing = Bolt on flange.
 Flange dimensionstable = The size is available from the smallest one shown on the table.
 Material = Selective
 Diameter of Electrode = Φ6/ 8/ 10/ 15/ 20
 Quantity of Electrode = up to 7 rods

= 60N

Terminal box fixing = Integrated flange
 Flange dimensionstable = Available from the minimum size of 100A, JIS10K.
 Material = Only available is the standard housing/flange made of PVC.
 Material of other parts is selective.
 *Option : Ones made of HT & PVC can be available.
 Diameter of Electrode = Φ6 only
 Quantity of Electrode = up to 9 rods

= 77

Terminal box fixing = Integrated flange
 Flange dimensionstable = 50A – 80A, JIS10K
 Material = Only available is the standard housing/flange made of PVC
 Material of other parts is selective.
 Diameter of Electrode = Φ6 only
 Quantity of Electrode = up to 5 rods, 6-rod type is KF-670-6.

= 88

Terminal box fixing = Solid Type, Mounting by screw.
 Mounting Dimensions = G2B Screw only
 Material = Only available is the standard housing/flange made of PVC
 Material of other parts is selective.
 Diameter of Electrode = Φ6 only
 Quantity of Electrode = up to 5 rods, 6-rod type is KF-680-6.

Special Specification / High temp, High pressure, others

KFB640-□

Quantity of Electrode = 1, 2, 3, 4

Specification = Terminal box fixing = Bolt on flange

Flange dimensionstable = 50A, JIS10K

Material = Terminal box is made of AC and flange 304SS (standard)

Diameter of Electrode = Φ6 only

Quantity of Electrode = up to 4 rods, 5-rods Consult with Sales staff when you need more than.

Number / Length of Electrode

TAG.No	NBR	n = POLE	Shor test ←————→ Longest						
			L 1	L 2	L 3	L 4	L 5	L 6	L 7

Line of business

- Rotary Paddle Type Level Switch
- Vibration Type Level Switch
- Swing Type Level Switch
- Acoustic Level Switch
- Capacitance Type Level Switch
- Capacitive Proximity Sensor
- Capacitance Type Level Indicator
- Diaphragm Type Level Switch
- Tiit Switch
- Leak Type Level Switch
- Microwave Type Switch
- Sounding Bob Type Level Indicator
- Flow Switch
- Conductance Type Level Switch
- Float Switch
- Float Type Level Indicator
- Ultrasonic Type Level Indicator
- Equipments For Conveyor Lines
- Dust Monitor System
- Zirconia Oxygen Analyzer
- Laser Type Level Indicator
- RADAR Type Level Indicator
- On-line Sensors for Accurate Liquid Analysis
- Ultrasonic Flow meter

*Please be sure to read USER'S GUIDE, Installation & Operation Instructions before using the instrument.

*The specifications herein may be subject to change without advance notice.

Nuclear Power Generation to Rice Milling
 All-round Manufacturer of Level Controllers for Powder, Granules and Liquid

KANSAI Automation Co., Ltd.

Headquarters :
 2-14, Togano-cho, Kita-ku, Osaka 530-0056, Japan
 TEL. 81-6-6312-2071 FAX. 81-6-6314-0848
 e-mail: info@kansai-automation.co.jp

<http://www.kansai-automation.co.jp>

Tokyo Branch : 1-29-6, Hamamatsu-cho, Minato-ku, Tokyo 105-0013, Japan
 TEL. 81-3-5777-6931 FAX. 81-3-5777-6933

Nagoya Office : 3-31-27, Uchiyama, Chigusa-ku, Nagoya 464-0075, Japan
 TEL. 81-52-741-2432 FAX. 81-52-741-1588

Kyushu Office : 1-2-39, Asano, Kokura Kita-ku, Kitakyushu 802-0001, Japan
 TEL. 81-93-511-4741 FAX. 81-93-511-4580



Design, development, and manufacture of level measuring sensors

Agent

SCIENCE GATE
 Your Automation Partner



SCIGATE AUTOMATION (S) PTE LTD

No.1 Bukit Batok Street 22 #01-01 Singapore 659592
 Tel: (65) 6561 0488 Fax: (65) 6562 0588
 Email: sales@scigate.com.sg Web: www.scigate.com.sg

Business Hours: Monday - Friday 8.30am - 6.15pm