

JazzTM **Micro-OPLC**TM

Operator Panel and Programmable Logic Controller



The Music of Efficient Automation



What is the Jazz™ OPLC™ ?	3
<hr/>	
Applications	4
<hr/>	
PLC & HMI - The ultimate duet	5
Jazz™ - The ultimate instrument	5
<hr/>	
Programming Software	6
<hr/>	
Jazz™ Features	7
<hr/>	
Communication	
Jazz™ SMS Control	8-9
Remote Access	10
RS232	11
MODBUS	11
OPC/DDE Server	11
DataXport	11
<hr/>	
Technical Specifications	12-13
<hr/>	
About Unitronics®	14-15
<hr/>	
Distributors List	16
<hr/>	



Jazz™ OPLC™

Break the rules. Replace that "smart relay" with a real Programmable Logic Controller that includes a full-function Operator Panel with numeric keypad—for the same low price.



PLC notes:

- Onboard I/Os: Digital and Analog inputs, Relay or Transistor outputs
- High-speed inputs
- Windows-based Ladder Logic software
- Ladder code memory: 24K (virtual)
- SMS-enabled via GSM
- Remote access utilities
- Time-based control in 3 clicks

HMI notes:

- Two 16-character text lines
- Up to 60 user-designed screens
- Multilingual - the Jazz™ LCD display supports over 15 languages and 20 graphic icons
- Displays conditional messages
- Shows time, date, bit status, timer & integer values (up to 64 HMI variables per application)
- LCD illuminated screen



Applications

Jazz™. It's all around you

■ Industrial Automation

Textile, robotics, packaging, production lines



■ Water & Agriculture

Pumping, irrigation, flow monitoring



■ Building Automation

Air conditioning, lighting, barrier/door control, alarm systems

PLC & HMI

The ultimate duet



Saves labor:

- Reduces programming time
- No Panel-PLC wiring
- Built-in Panel-PLC communication

Boosts efficiency:

- Display instructions to machine operators
- Data entry via the Jazz™ operator panel
- View application data via Jazz™ Info Mode

Cuts budget:

- Reduces hardware requirements
- Saves cabinet space

Jazz™



The ultimate instrument

Far more than a “smart relay”—the Jazz™ performs simple or complex control tasks

More PLC capabilities:

- Ladder Logic programming ensures functional flexibility
- Program capacity: 24K of Ladder code memory (virtual)
- Functions include math, store/load, compare, & clock functions, plus immediate read/write to I/Os, interrupts, and loops

More HMI functionality:

- Up to 60 user-designed screens
- Full alpha-numeric keypad
- Multilingual display

More communication options:

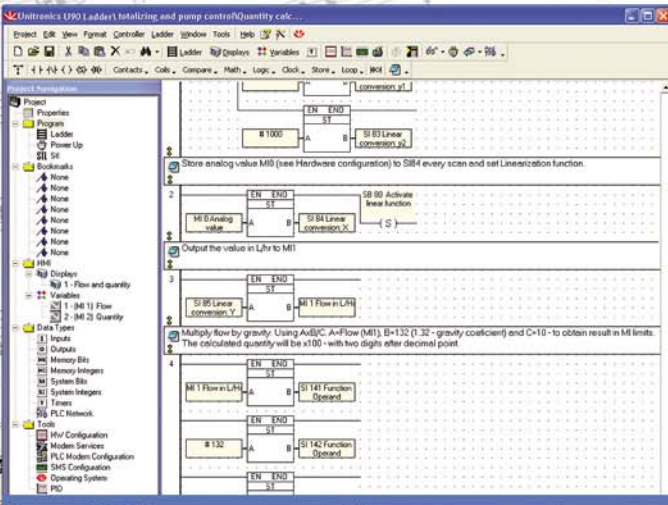
- GSM/SMS support
- Remote access utilities
- PC access via MODBUS or OPC server

Programming Software

Compose your PLC and HMI applications in one environment

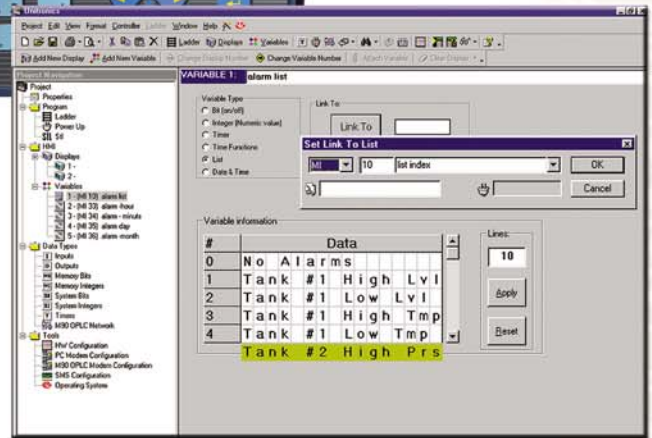
Use the Ladder editor to:

- Program your application
- Drag-and-drop contacts, coils, timers and function blocks (math, logic, clock)
- Test and debug programs



Use the HMI editor to:

- Design your operator interface
- Compose operator instructions
- Assign functions to keys
- Create and display variables



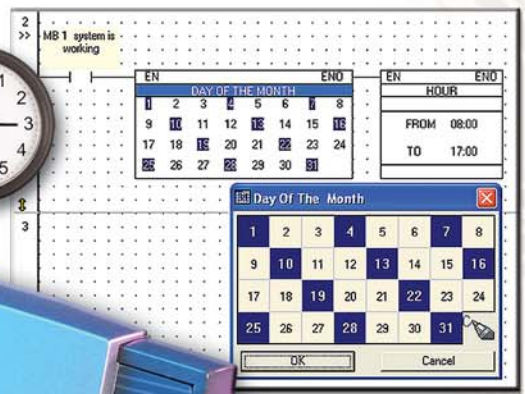
Features

Features

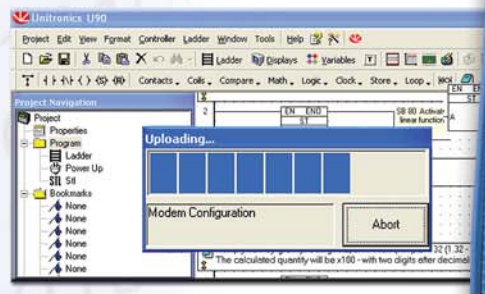
That let you keep up the beat



► **Customizable, user-labeled keyboard ***



▲ **Time-based control**



▲ **Full source upload***



▲ **Print utility***

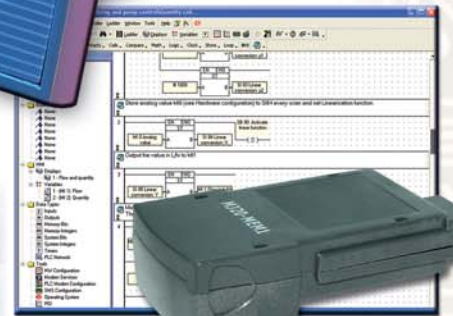


▲ **Scroll between pre-programmed recipes/menus**

▲ **High-speed counters**



▲ **Multilingual display**



▲ **Program Cloner***
(optional Add-on Module), enables you to copy applications from PLC to PLC

* These features require purchasing some Add-on modules or accessories (Add-on port, Program Cloner, Slide kit).

Communication

Jazz™ SMS Control

Music knows no boundaries

Use your GSM cell phone to implement real-time remote control in your application

The GSM-enabled Jazz™:

Sends and receives SMS messages containing both fixed text & variable data



Number	Description
1 +16175491187	Duty Electrician1
2 +16175491186	Duty Electrician2
3 +16175491185	Production Supervisor
4 +16175491184	Production Manager
5 +16175491183	Support Engineer
6 +16175491182	Shift Manager

Sends messages to many cell phone numbers

	Phone Number	Phone Description
<input type="checkbox"/>	0	Last Received Phone Number
<input checked="" type="checkbox"/>	1 +16175491187	Duty Electrician1
<input checked="" type="checkbox"/>	2 +16175491186	Duty Electrician2
<input checked="" type="checkbox"/>	3 +16175491185	Production Supervisor
<input checked="" type="checkbox"/>	4 +16175491184	Production Manager
<input checked="" type="checkbox"/>	5 +16175491183	Support Engineer
<input checked="" type="checkbox"/>	6 +16175491182	Shift Manager

Can route different messages to different phone numbers

Auto-acknowledges received messages



	Phone Number	Phone Description
<input type="checkbox"/>	0	Last Received Phone Number
<input type="checkbox"/>	1 +16175491187	Duty Electrician1
<input type="checkbox"/>	2 +16175491186	Duty Electrician2
<input checked="" type="checkbox"/>	3 +16175491185	Production Supervisor
<input checked="" type="checkbox"/>	4 +16175491184	Production Manager
<input type="checkbox"/>	5 +16175491183	Support Engineer
<input type="checkbox"/>	6 +16175491182	Shift Manager

Protects your system: prevents unauthorized calls



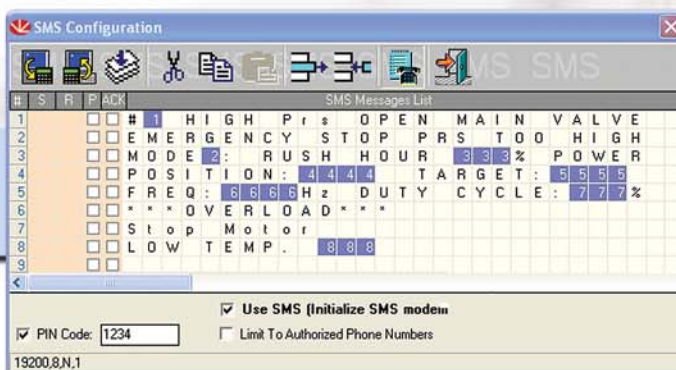
Jazz™ SMS Control

Answers data requests from your cell phone



Sends data to any local or remote serial printer, via GSM

Contains up to 1K of user defined messages



Remote GSM control requires:

- A Jazz™ OPLC™ unit
- RS232/Programming Add-on port and cable
- A GSM kit (includes a modem, magnetic antenna, cables and adapters)



Communication

Remote Access

Jazz™ reaches across time and space



Access remote Jazz™ controllers via GSM or landline modem.

- Download, upload, or debug remote Jazz™ programs
- Operate the controller's panel via remote PC
- View real-time parameters
- View and operate several controllers on your PC screen, simultaneously, in real-time
- Read, write, and store online operand values
- Run, reset, or initialize a remote controller



Remote Access can run independently of the Ladder software, thereby protecting your program from unauthorized users



Communication

Serial Communication

Let's talk... Jazz™

RS232

Plug an Add-on port Module (optional) into the Jazz™ OPLC™ to enable PC access and to communicate with external serial devices, such as modems and printers.

MODBUS

Establish master-slave communications between Jazz™ controllers and any PC application that supports the MODBUS protocol (such as SCADA systems).



OPC/DDE Server

Enable the OPLC™ to exchange data with external applications. Our OPC/DDE servers can interface with SCADA systems, and read/write PLC data from/to Excel, Access, or other Windows-based applications.

DataXport

A powerful software utility that captures PLC application data and exports it to Excel files for logging or processing. Exports data according to a user-defined schedule or manually, via direct connection or GSM/landline modem.

Technical Specifications

Technical Specifications

Article number	JZ10-11-R10	JZ10-11-T10	JZ10-11-R16	JZ10-11-T17	JZ10-11-R31	JZ10-11-T40
	6 Digital Inputs 4 Relay Outputs	6 Digital Inputs 4 Transistor Outputs	6 Digital Inputs 2 Digital/Analog Inputs 2 Analog Inputs 6 Relay Outputs	6 Digital Inputs 2 Digital/Analog Inputs 2 Analog Inputs 7 Transistor Outputs	16 Digital Inputs 2 Digital/Analog Inputs 2 Analog Inputs 11 Relay Outputs	16 Digital Inputs 2 Digital/Analog Inputs 2 Analog Inputs 20 Transistor Outputs
I/Os						
Digital inputs	6 pnp/npn (source/sink) 24VDC	6 pnp/npn (source/sink) 24VDC	8 ¹ pnp/npn (source/sink) 24VDC	8 ¹ pnp/npn (source/sink) 24VDC	18 ¹ pnp/npn (source/sink) 24VDC	18 ¹ pnp/npn (source/sink) 24VDC
High-speed counter	2 inputs can function as either high-speed counters (5 kHz, 16 bit resolution), or as normal digital inputs					
Analog inputs	None	None	Two ¹ 10 bit inputs: 0-10V and Two 10 bit inputs: 0-20mA, 4-20mA	Two ¹ 10 bit inputs: 0-10V and Two 10 bit inputs: 0-20mA, 4-20mA	Two ¹ 10 bit inputs: 0-10V and Two 10 bit inputs: 0-20mA, 4-20mA	Two ¹ 10 bit inputs: 0-10V and Two 10 bit inputs: 0-20mA, 4-20mA
Digital outputs	4 relay outputs	4 pnp (source)	6 Relay outputs	7 pnp (source)	11 Relay outputs	20 pnp (source)
Program						
Ladder code memory	24K (virtual)					
Bit/Coils	256					
Integers/Registers (16 Bit)	256					
Timers	64					
Operator panel						
Display size & Type	2 lines x 16 characters, STN LCD, LED backlight					
HMI displays	60 user-designed displays available					
Variables	64 HMI variables are available to conditionally display text and data. List variables add up to 1.5K's worth of HMI capacity					
Keypad	16 sealed membrane keys, including 15 programmable keys (10 of which are user-labeled)					
Communication						
Via an Add-on port Module (JZ-PRG or JZ-RS4) ²						
Serial communications	RS232/RS485, RS232/Programming Add-on port (optional, see Accessories)					
GSM support	SMS messages to/from many cell phone numbers, up to 1K of user-designed messages. Remote access-enabled					
MODBUS	Supports MODBUS protocol, Master-Slave					
General						
Power supply	24 VDC					
Clock (RTC)	Real-time clock functions (date and time)					
Battery back-up	10 years typical at 25°C, battery back-up for RTC and system data, including variable data					
Environment	NEMA4X/IP65 (from panel, when mounted)					

¹ These models comprise a total of 10/20 inputs (model-dependent). 6/16 (model-dependent) of these may be wired, in a group, as either digital npn or pnp. 2 inputs have added functionality. Both may be wired in a group as npn, pnp, or analog (voltage) inputs. Note that it is also possible to individually wire 1 input as a pnp input, and the other as an analog input. The 2 remaining inputs are analog (current).

² In order to download applications and enable communications, install Jazz™ with the appropriate Add-on Module.

Technical Specifications

Add-on Modules and Accessories

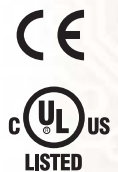
Description	Article number
<p>Programming Kit: Programming software CD Use it to configure your hardware and write your PLC & HMI applications.</p> <p>Programming Add-on port Provides an RS232 interface for PC access, modem connections and communications with devices that supply active RS232 voltage signals for purposes of power supply.</p> <p>Programming cable</p> <p>D-type adapter Interfaces between the PC serial port and the programming cable</p>	JZ-PRG
<p>Com Port Kit: Isolated RS232/RS485 Add-on port¹ Enables networking and serial communication, including programming.</p> <p>Programming cable</p> <p>D-type connector Interfaces between the PC serial port and the programming cable</p>	JZ-RS4
<p>Program Cloner Add-on Module Use the Cloner to copy applications from PLC to PLC</p>	MJ20-MEM1
<p>Slide Kit A set of keypad slides, which can be individually labeled and inserted into the Jazz.</p>	MJ20-JZ-SL1

¹The RS232/RS485 Add-on port is not yet UL certified

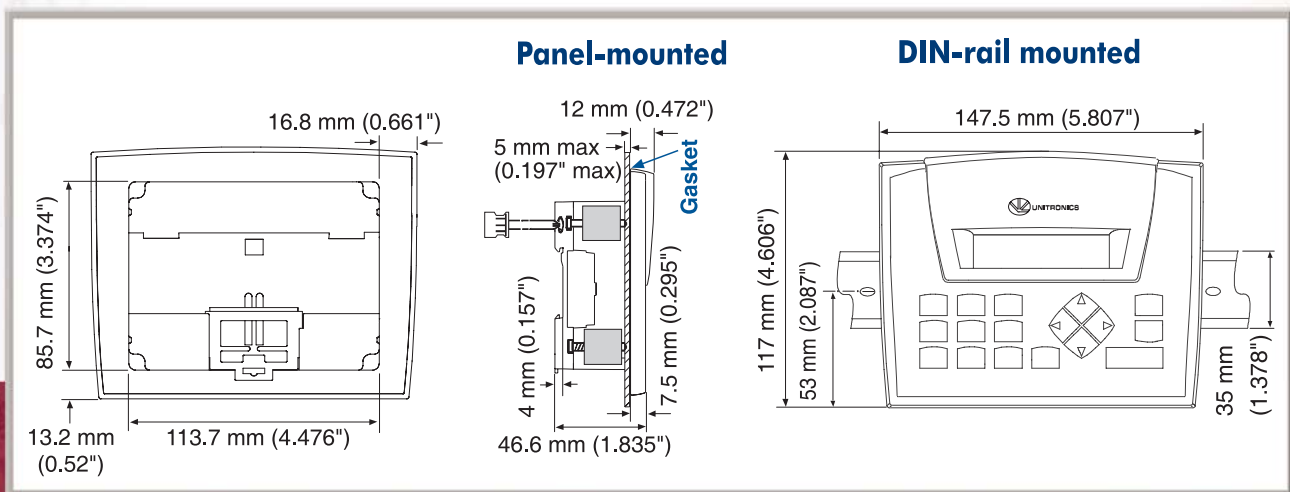
Additional Unitronics® Accessories

Description	Article number
GSM Kit including Enfora modem	GSM-KIT-41J
GSM Kit including Siemens TC65 modem	GSM-KIT-14J
GSM Kit including Wavecom modem ¹	GSM-KIT-24J
RS232 communication cable for GSM modem (modem to PC) - Wavecom	MJ10-22-CS32
Power supply 1.1 Ampere, 24V switching power supply. DIN-rail or surface mounted.	PS-24-11A
USB to RS232 converter	MJ10-22-CS35

¹ Note that the PC to Modem cable for Wavecom modems (MJ10-22-CS32) must be ordered separately.



Jazz™ dimensions and mounting



About Unitronics®



Unitronics® designs, manufactures and markets quality PLCs for the global market.

Easy to use, efficient and affordable, our products have been automating processes and stand-alone applications since 1989.

Via our Israeli headquarters and U.S. subsidiary, Unitronics® supports a global marketing network of over 100 distributors.

Our field-proven OPLC™ controllers automate many thousands of installations in diverse fields: petrochemical, automotive, food processing, plastics and textile, energy and environment, water and wastewater management – anywhere automated processes are required.



Our clients include:

- Coca-Cola
- General Motors
- Michelin
- Tupperware
- Intel
- Bayer
- Colgate-Palmolive
- Bosch-Rexroth
- ABB
- Land Instruments
- Mercedes
- Agfa
- Tyson Foods
- Pirelli
- Fiat
- Samsonite
- Black & Decker





World Wide Sales & Support

World Wide Sales & Support

www.unitronics.com/contact.htm



The information in this document reflects products at the date of printing. Unitronics reserves the right, subject to all applicable laws, at any time, at its sole discretion, and without notice, to discontinue or change the features, designs, materials and other specifications of its products, and to either permanently or temporarily withdraw any of the foregoing from the market. All information in this document is provided "as is" without warranty of any kind, either expressed or implied, including but not limited to any implied warranties of merchantability, fitness for a particular purpose, or non-infringement. Unitronics assumes no responsibility for errors or omissions in the information presented in this document. In no event shall Unitronics be liable for any special, incidental, indirect or consequential damages of any kind, or any damages whatsoever arising out of or in connection with the use or performance of this information. The tradenames, trademarks, logos and service marks presented in this document, including their design, are the property of Unitronics (1989) (R'G) Ltd. or other third parties and you are not permitted to use them without the prior written consent of Unitronics or such third party as may own them.



