



More Precision

ELTROTEC // Industrial Endoscopes





(Not available in USA)

- Ø 8.0mm

- Lengths: 1500mm to 12,000mm

- For industrial operation

- Battery powered

Description:

The Top-Line semi flexible video endoscope is the right choice for applications requiring easy operation and mobility. The robust semi flexible probe tip is sheathed with stainless steel and contains an adjustable LED light source at its tip. A 90°-prism head can be added for more flexibility. Images or video sequences can be stored on a SD-card.

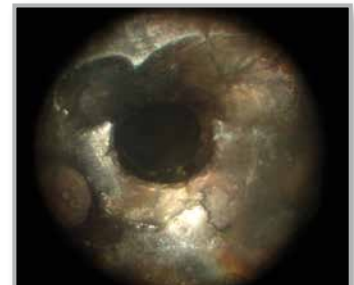
Features:

- Effortless inspection of drill holes
- Easy to use
- No cabling work
- Image and video stream mode

Complete set:

- Top-Line video endoscope
- 90° mirror head
- Integrated LED light source
- Robust aluminium case
- Power supply/charging device
- SD card

Application examples weld seam inspection:



Schweißnahtkontrolle



Korrosionskontrolle



Ablagerungen

High performance sensors made by Micro-Epsilon



Sensors and systems for displacement and position



Sensors and measurement devices for non-contact temperature measurement



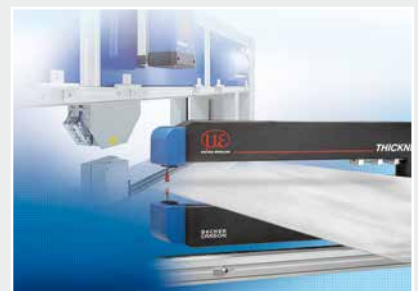
2D/3D profile sensors (laser scanner)



Optical micrometers, fibre optic sensors and fibre optics



Colour recognition sensors, LED analyzers and colour online spectrometer



Measurement and inspection systems



SCIGATE AUTOMATION (S) PTE LTD

No.1 Bukit Batok Street 22 #01-01 Singapore 659592

Tel: (65) 6561 0488

Fax: (65) 6562 0588

Email: sales@scigate.com.sg

Web: www.scigate.com.sg

Business Hours: Monday - Friday 8.30am - 6.15pm



MICRO-EPSILON Eltrotec GmbH

Heinkelstraße 2 · 73066 Uhingen / Germany

Tel. +49 (0)7161 98872-300 · Fax+49 (0)7161 98872-303

eltrotec@micro-epsilon.de · www.micro-epsilon.com