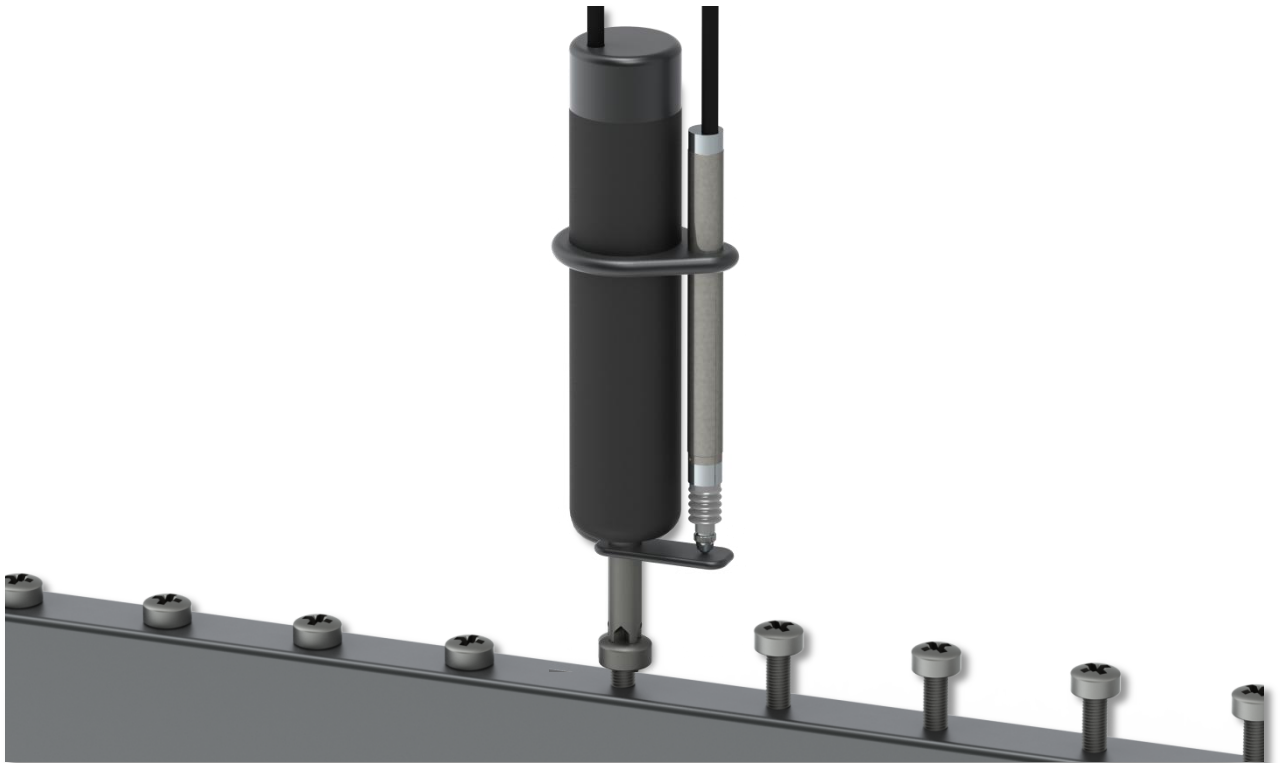


Application Story

Process Automation

Automated tool insertion using Digital Probes



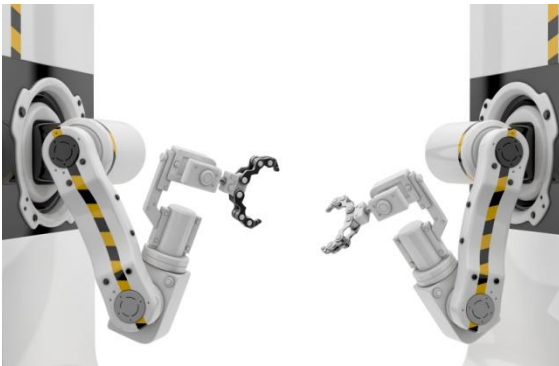
Precision. Quality. Reliability

www.solartronmetrology.com • sales.solartronmetrology@ametek.com

The Product

The standard DP range of Digital Spring Push Probes has justifiably become the work horse of the gauging industry. Very high resolution, excellent linearity and high data speed come as standard. Long life precision bearings, and an IP65 rating ensure that probes maintain their performance for millions of cycles.

Range: 2 to 20 mm – Accuracy: Up to 0.05% of reading – Resolution: Up to 0.01 μ m – Repeatability: Up to 0.15 μ m



The Challenge

The use of robots and automated processes is increasingly visible in industries across the world. Speed and less reliance on manpower is critical in many industrial processes.

Pneumatic, Hydraulic or Electrical insert tools or screwdrivers used in automated assembly systems are often fitted with a torque sensor to indicate when a component is pushed or screwed into position.

Torque sensors work well most of the time but are often unable to indicate when a component is not correctly positioned. A poorly formed screw, for example, may produce sufficient torque to indicate that a component is correctly positioned when it has actually failed.

Not identifying a failed action means that the sub assembly is passed down the line, which can prove to be costly.



The Solution

Retrofitting a gauge probe onto an insert tool to give true position feedback is easy to do and has become commonplace in many high volume mechatronic assembly applications where components may be small or fragile and it is critical that they are positioned precisely.

Retrofitting an LVDT displacement sensor onto an insert tool requires a little more precision in alignment, but it can have a lower cost and has the advantage of no contacting moving parts, so the life of the sensor is at least as long as the insert tool.

It is sometimes possible to build the position sensor into the insert tool, as below.

myLVDT





SCIGATE AUTOMATION (S) PTE LTD

No.1 Bukit Batok Street 22 #01-01 Singapore 659592

Tel: (65) 6561 0488

Fax: (65) 6562 0588

Email: sales@scigate.com.sg

Web: www.scigate.com.sg

Business Hours: Monday - Friday 8.30am - 6.15pm

United Kingdom - Head Office

Solartron Metrology
Steyning Way
Bognor Regis
West Sussex
PO22 9ST
Tel: +44 (0) 1243 833333
Fax: +44 (0) 1243 833322
Sales.solartronmetrology@ametek.com

France

Solartron Metrology
Rond-point de l'Espine des Champs
Buroplus - Bat. D
Elancourt 78990
Tel: +33 (0)1 30 68 89 50
Fax: +33 (0)1 30 68 89 59
france.solartronmetrology@ametek.com

Germany

Ametek GmbH
Solartron Metrology Division
Rudolf-Diesel-Strasse 16
40670 Meerbusch
Tel: +49 (0) 2159 9136 500
Fax: +49 (0) 2159 9136 505
vertrieb.solartron@ametek.de

Brazil

Ametek do Brasil, Ltda
Rod. Eng Ermenio de Oliveira Penteado, Km 57, SP75
Bairro Tombadouro
13337-300, Indaiatuba, SP, Brazil
Tel: +55 19 2107 4126

India

Ametek Instruments India Private Limited
1st Floor, Left Wing
Prestige Featherlite Tech Park
Plot #148, EPIP II Phase
Whitefield, Bengaluru 560 066
Karnataka, India
Tel: +91 80 6782 3200
Fax: +91 80 6782 3232

USA

Solartron Metrology
USA Central Sales Office
915 N.New Hope Road, Suite C
Gastonia, NC 28054
Tel: +1 800 873 5838
Fax: +1 704 868 8466
usasales.solartronmetrology@ametek.com

China

AMETEK Commercial Enterprise (Shanghai) Co. Ltd
No. 155 Puhui Road
Ju Ting Economic Development Zone
Shanghai 200131, China
Tel: +86 21 5763 2509
Fax: +86 21 5866 0969 Ext. 261/262
china.solartronmetrology@ametek.com



Solartron Metrology

Precision Driven

Offices worldwide
Agent and distributor details
available at
www.solartronmetrology.com



Q09540

Solartron pursues a policy of continuous development. Specifications in this document may therefore be changed without notice.

AMETEK[®]
ULTRA PRECISION TECHNOLOGIES

Precision. Quality. Reliability

www.solartronmetrology.com • sales.solartronmetrology@ametek.com