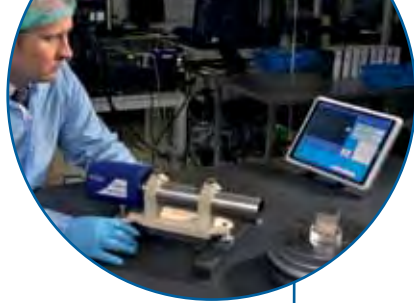




Autocollimators & Accessories

Measuring angle, straightness, flatness, squareness, and parallelism





Indexing tables in the lab

Ultra Autocollimator is ideal for measurement of angular indexing heads and tables. It is also commonly used to determine the errors of a polygon when used with a calibrated indexing table.

“The Ultra Autocollimator combines a wide measurement range with high accuracy over its whole range”

Ultra High Precision Autocollimator

code 142-204-01

Key features

- Ultra high 0.1 sec accuracy
- Range of 300 seconds
- Simultaneous dual axis measurement
- Laser sighting aid for easy set up
- Includes software and tablet PC as standard
- Ideal for high precision measurement and indexing of small angles
- Suitable for calibration of polygons, rotary tables and encoders
- Alignment of optical systems



Performance improving software

Dedicated Optical Analysis software is included as standard:

Straightness

This simple interactive menu driven software allows single or simultaneous 2 axis straightness of components such as machine tool slideways, shafting and rolls.

Twist

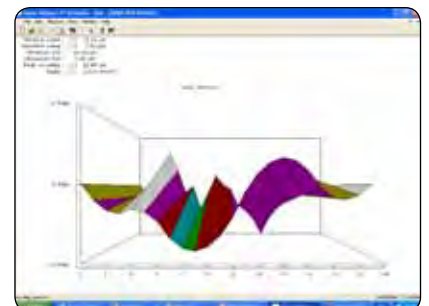
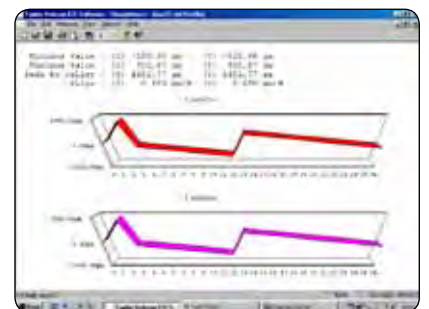
The twist program allows straightness measurements to be carried out on one guideway and then compared to the straightness of a second guideway (when using a Talyvel levelling system, see the brochure 'Talyvel/Clinometers For Angular Measurement').

Polygon

This program is designed specifically for the calibration of rotary devices and polygons with up to 72 faces, allowing single or bi-directional calibration with results of both angular indexing accuracy and pyramidal error.

Flatness

The Union Jack/Moody method for flatness measurement uses operator selected measuring steps to measure each generator line and calculate the overall flatness of the surface.





Electro optical metrology

Taylor Hobson has been selling electro-optical metrology products since the last 1930s and the range includes Micro Alignment Telescopes (used for checking and setting straightness and alignment) Autocollimators (for accurate measurement of small angular displacements), clinometers and "Talyvel" electronic levels. Used in a range of applications in industries such as machine tools, aerospace, marine and steel rolling, the Taylor Hobson range combines high accuracy and repeatability with fast response and operational convenience.

To provide focused technical support to all its electro-optical metrology customers, Taylor Hobson has a dedicated technical support centre:

Spectrum Metrology

Customers with electro-optical measurement needs often require not only equipment but also advice on solving a specific manufacturing or calibration problem. With many years experience in electro-optical metrology, Spectrum Metrology provides rapid technical and application support via phone, fax, e-mail or on-site visits. A full demonstration and training facility is available either on-site or in Spectrum Metrology's demonstration room.

Spectrum Metrology is also the authorised repair agent to Taylor Hobson for the electro optical metrology range and holds a wide stock of ex-demonstration equipment for hire or sale.

Spectrum Metrology can be contacted on:

Tel: (44)(0)116 276 6262
 Fax: (44)(0)116 276 6868
 Email: sales@spectrum-metrology.co.uk

Unit 8 Ireton Avenue, Leicester,
 LE4 9EU, England

www.spectrum-metrology.co.uk

Taylor Hobson UK

(Global Headquarters)
 PO Box 36, 2 New Star Road
 Leicester, LE4 9JQ, England
 Tel: +44 116 276 3771 Fax: +44 116 246 0579
 email: taylor-hobson.uk@ametec.com



Taylor Hobson France

Rond Point de l'Épine Champs
 Batiment D, 78990 Elancourt, France
 Tel: +33 130 68 89 30 Fax: +33 130 68 89 39
taylor-hobson.france@ametec.com



Taylor Hobson Germany

Postfach 4827, Kreuzberger Ring 6
 65205 Wiesbaden, Germany
 Tel: +49 611 973040 Fax: +49 611 97304600
taylor-hobson.germany@ametec.com



Taylor Hobson India

1st Floor, Prestige Featherlite Tech Park
 148, EPIP II Phase, Whitefield, Bangalore – 560 006
 Tel: +91 1860 2662 468 Fax: +91 80 6782 3232
taylor-hobson.india@ametec.com



Taylor Hobson Italy

Via De Barzi
 20087 Robecco sul Naviglio, Milan, Italy
 Tel: +39 02 946 93401 Fax: +39 02 946 93450
taylor-hobson.italy@ametec.com



Taylor Hobson Japan

3F Shiba NBF Tower, 1-1-30, Shiba Daimon Minato-ku
 Tokyo 105-0012, Japan
 Tel: +81 (0) 3 6809-2406 Fax: +81 (0) 3 6809-2410
taylor-hobson.japan@ametec.com



Taylor Hobson Korea

#310, Gyeonggi R&DB Center, 906-5, Iui-dong
 Yeongtong-gu, Suwon, Gyeonggi, 443-766, Korea
 Tel: +82 31 888 5255 Fax: +82 31 888 5256
taylor-hobson.korea@ametec.com



Taylor Hobson China Beijing Office

Western Section, 2nd Floor, Jing Dong Fang Building (B10)
 No.10, Jiu Xian Qiao Road, Chaoyang District, Beijing, 100015, China
 Tel: +86 10 8526 2111 Fax: +86 10 8526 2141
taylor-hobson.beijing@ametec.com



Taylor Hobson China Shanghai Office

Part A, 1st Floor, No. 460 North Fute Road
 Waigaoqiao Free Trade Zone, Shanghai, 200131, China
 Tel: +86 21 5868 5111-110 Fax: +86 21 5866 0969-110
taylor-hobson.shanghai@ametec.com



Taylor Hobson Singapore

AMETEK Singapore, 10 Ang Mo Kio Street 65
 No. 05-12 Techpoint, Singapore 569059
 Tel: +65 6484 2388 Ext 120 Fax: +65 6484 2388 Ext 120
taylor-hobson.singapore@ametec.com



Taylor Hobson USA

1725 Western Drive
 West Chicago, Illinois 60185, USA
 Tel: +1 630 621 3099 Fax: +1 630 231 1739
taylor-hobson.usa@ametec.com

