

# ProfiSignal 20



## INTUITIVE **MEASUREMENT SOFTWARE**

Modern. Functional. Advanced.

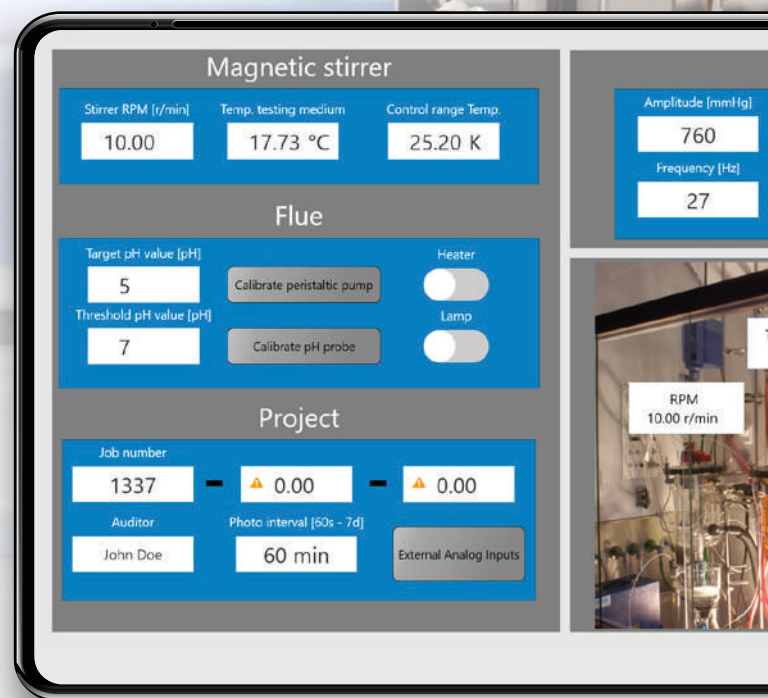


# ProfiSignal20 – INTUITIVE **SOFTWARE** FOR

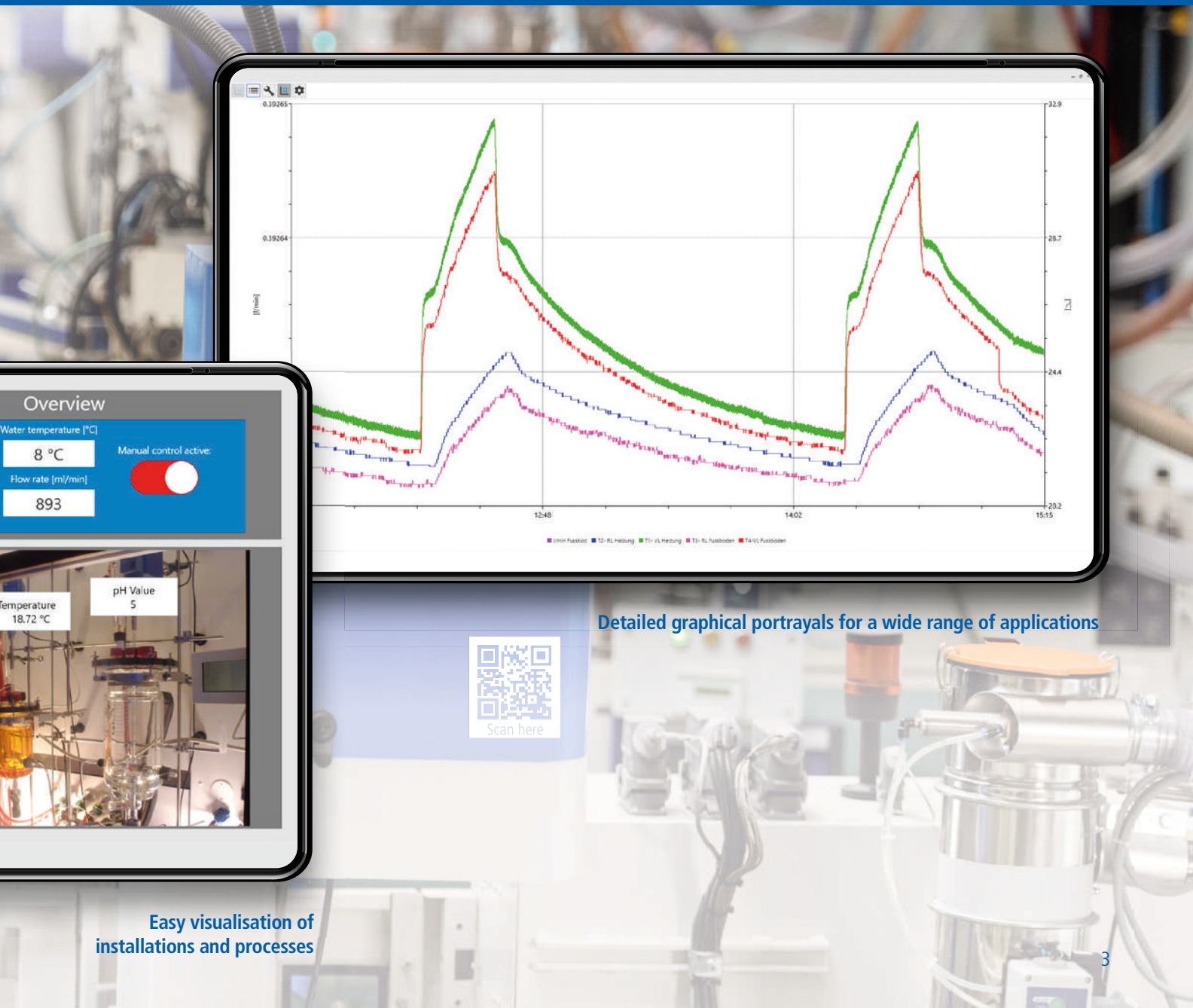
Do you want to visualise and analyse your measurement data from any platform and effortlessly monitor and control processes? Then you should opt for the intuitive ProfiSignal 20 measurement technology software package.

ProfiSignal 20 is a complete software package for use in data acquisition and analysis, visualisation and process control. It is highly user friendly and combines versatile functionality with first-class usability. ProfiSignal 20 is logically structured and easy to understand regardless of whether you are processing just a few or a few thousand channels. Are you already familiar with the well-known measurement technology software ProfiSignal? Then you can look forward to familiar and proven functions in a new look. Many new functions are also included as well as advanced platform independence. If ProfiSignal is new to you, its intuitive operation and optimal user experience will enable you to quickly become familiar with the software.

## A proven system reinterpreted



# MEASUREMENT AND TESTING TECHNOLOGY





# ProfiSignal 20 – A PROVEN SYSTEM IN A NEW

ProfiSignal 20 is the software of choice when you need easy visualisation and analysis of measurement data or to monitor and control processes. Intuitive and platform independent.

Are you looking for measurement software that you can use on a desktop PC in your office as well in a control centre's measuring system? Then we have the system for you. ProfiSignal 20 is the perfect fit.

But you want more? We can offer that too. ProfiSignal 20 is platform independent so can also be used on tablets and smartphones.

No matter what your specific needs, ProfiSignal 20 will impress with innovative options to considerably simplify your work while also saving lots of time. ProfiSignal 20 is modular, scalable and available in two versions: ProfiSignal 20 Go takes you from measurement data to detailed graphical portrayals in just a few clicks. ProfiSignal 20 Basic lets you create sophisticated and detailed visualisations of installations and processes while also enabling easy process control.

## Modern look & feel



# LOOK



## ProfiSignal 20 Go

- Measurement data acquisition and storage
- Visualisation of measurement data in on- and offline diagrams
- Measurement data analysis and processing
- Data export and reporting

## ProfiSignal 20 Basic

- Visualising installations and processes
- Operating and monitoring installations and processes

## Product features

- Graphical portrayals for a wide range of applications
- Powerful measurement data portrayals with instant and smooth transition between live and historical data
- From measurement data to graphical portrayal in just three steps using ProfiSignal 20 Go
- Visualising installations and processes without any programming required using ProfiSignal 20 Basic
- Fully platform independent – optimised for desktop PCs, laptops, tablets and smartphones
- Modern interfaces and operating designs – adapted to the look and feel of the relevant platform
- Beginner and expert modes to match individual needs

# ProfiSignal 20 – **PERFECT OPERATION** ON ALL



# LEVELS

## Cutting-edge platform independence

**Where and how do you want to analyse measurement data and control processes? In the office on a PC, in a control centre's measuring system, on the way to a production facility by smartphone, or directly at an installation by tablet? ProfiSignal 20 provides an appropriate and combinable solution whatever variant suits your needs.**

Is this scenario familiar to you? You are walking through either a production facility, machine installation or a test centre and need to „quickly“ check the current operating parameters of individual plant components and machines. This is generally impossible due to the machines not being equipped with user interfaces. So what can you do? You could go all the way back to the office or to the control centre and check the parameters on a PC or measuring system? This requires effort, is time-consuming, annoying and, most importantly, unnecessary.

ProfiSignal 20 solves the problem with its new SCACH function. All you need to do is then scan the QR code attached to each machine using the camera of your smartphone or tablet to display on the mobile device a measurement diagram or a full visualisation of the installation. You then only need to go to those areas of the installation where measurement data is required, and then effortlessly display the relevant information. The same ProfiSignal 20 project can be used to view data on your way to the office using your smartphone, or on your PC at your desk.

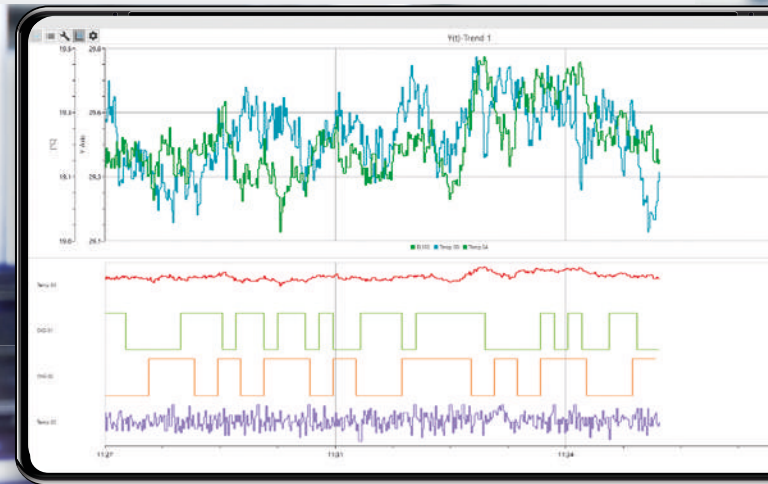
ProfiSignal 20's special feature is full platform independence. The same project is available on any device, each time optimised according to the display and operating design of the respective platform. No matter where and how you want to access your processes, ProfiSignal 20 provides an optimal solution for any application.

# ProfiSignal 20 Go – FROM **SENSOR** TO **TREND**

Do you want to start recording and analysing measurement data as quickly as possible? Then opt for the easy-to-use ProfiSignal 20 Go software.

ProfiSignal 20 Go enables you, in just a few steps, to visualise both online and offline measurement data in various types of diagram, to monitor the data, analyse it, archive it as a measurement file, and export it in the required file format. Historical measurement data can be accessed during ongoing measuring processes to enable comparisons with the actual data. Different types of statistical functions can be used to mark and directly analyse specific data ranges. A recorder function simplifies trials and experiments enabling direct comparisons between different experimental procedures. The recorder can also be used in batch processing. It creates a measurement data file which can also be sent by email for further evaluation.

## Fast project processing



Multi-track diagram



# IN JUST A FEW STEPS



## Product features

- Multi-track diagrams for linking several diagrams on the same time axis, e.g. to directly compare analog and digital signals
- SCACH function – one scan is sufficient to open the correct diagram
- Just a few clicks are required to go from measurement data to graphical portrayal
- Monitoring and analysis of any measurement data from different sources (hardware and software)
- Single and multi-axle  $y(t)$  diagrams with the option for simultaneous display and analysis of different measured variables
- Statistical evaluation and on- and offline calculation functions
- Smooth zoom function from full overviews to high-resolution  $\mu$ -seconds ranges
- Data export in CSV, Diadem or WAV formats
- Simplified performance of trials/experiments and batch processes with the user-friendly recorder function

# ProfiSignal 20 Basic

Do you need a quick solution to visualise and monitor processes? Then ProfiSignal 20 Basic is precisely what you're looking for.

ProfiSignal 20 Basic enables you to create individualised visualisations using a diverse range of operating and monitoring elements. Both continuous processes (e.g. production data acquisition) and non-continuous measurement tasks (e.g. test measurements) can be visualised, operated and monitored without any programming effort being necessary. Operating and monitoring visualisations can be created by assembling and configuring ready-made elements. What's more, all ProfiSignal 20 Go functions, including the different diagram types as well as analysis and export functions, are all included in ProfiSignal 20 Basic to complete the functionality of your ProfiSignal 20 Basic application.

## Operation / Observation



## Measurement data analysis



## Reports / Protocols

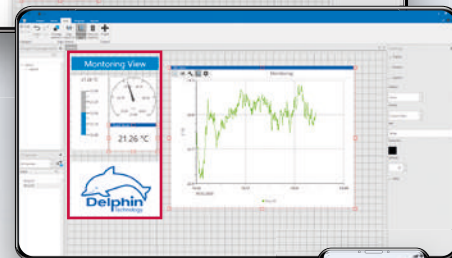
[illegible]

# Monitoring and process control

## 1.) PC portrayal of the visu objects



2.) Adapted visu  
objects for viewing  
on a smartphone



### 3.) Live display



## Basic

Go

# VISUALISATION AND CONTROL MADE EASY



1.) PC portrayal  
of the visu objects

2.) Adapted visu  
objects for viewing  
on a smartphone

3.) Live display

## Product features

- Intuitive diagram creation with no programming effort necessary
- Ready-made operating and monitoring elements included
  - Analogue displays, circular displays, bar graphs
  - Digital displays, signal lamps
  - Geometrical objects and text fields
  - All diagram types from ProfiSignal 20 Go
  - Images
- Working-copy concept allows project adjustments during operation
- Direct access to mobile-device cameras to integrate background images
- SCACH function – one scan is sufficient to open the correct project
- Object designer for combined objects
- Multiple versions of one project – optimised for different device types

# ProfiSignal 20 – HARDWARE AND SOFTWARE

**Do you want to immediately begin analysing measurement data but do not want to connect your machines or system components to a measurement network or measuring system? Then we have the solution for you. Use data acquisition hardware from Delphin as edge devices with ProfiSignal 20.**

If you need to quickly acquire, visualise and analyse measurement data without installation effort, then Delphin devices with ProfiSignal 20 pre-installed are the right choice.

Every device, whether the modular Message, Expert series or the compact Loggito data loggers, are optionally available with ProfiSignal 20. Your data acquisition device then acts as an edge device, with functions for data acquisition, pre-processing and the provision of measurement data. You get everything you need. Every feature from ProfiSignal 20 is available, with the software also capable of being installed on a server.

## Plug & Play

This solution also has the new SCACH function enabling you to directly connect to your machine via WLAN and a smartphone or tablet. Data visualisation starts simply by just scanning the QR code attached to the machine. Measurement data is then directly accessible while failure and safety risks are minimized. Delphin devices and the ProfiSignal 20 projects they contain can of course also be accessed using other devices, e.g. your office PC.



# ALL IN ONE



# ProfiSignal20 – OVERVIEW OF **FUNCTIONS**

Option / Function	Go	Basic
Diagram types and functions (online and offline)		
y(t) diagram	X	X
Any number of y-axes, left or right positioning	X	X
Scalable y-axes: linear, relative or logarithmic	X	X
Time axis, above or below positioning	X	X
Automatic axis labelling	X	X
Display modes: points, steps, lines, interpolated	X	X
Platform-optimised zoom functions	X	X
y(x) diagram	X	X
Multi-track diagram	X	X
Recorder function	X	X
Loading/saving measurement files	X	X
Accessing database/device memory	X	X
Statistical functions on live and historical data	X	X
Diagram export as graphics file	X	X
Diagram printing function	X	X
Data export in ASCII and CSV formats	X	X
Data export in WAV format*	X	X
Data export in Diadem format	X	X
Load/save diagram configuration	X	X
Operation and control instruments		
Input field		X
Slide switch		X
Button		X

\* Only Raw Tracks Expert Vibro/Transient

Option / Function	Go	Basic
<b>Display and graphical elements</b>		
Analog display		X
Round display		X
Bar display		X
Digital display		X
Labelling		X
LED		X
Image object		X
Background image		X
Geometric objects (lines, rectangles, circles, arrows)		X
<b>Other options / functions</b>		
SCACH function for instant access to projects and diagrams	X	X
Project variants optimised according to platform		X
Working-copy function: editing active projects		X
Creation of background images via camera function		X
Object designer for combining objects		X
Setting object properties from channel values		X
Different themes: "Dark", "Light", "Colourful"	X	X
Beginner and expert modes	X	X
<b>System requirements</b>		
Windows	Minimum version: Windows 10 64-bit, Min. 4 GB RAM	
Mobil	Minimum iOS version: 12.0	
	Minimum Android version: Android 8 (Oreo)	

Techn. status June 2020



## SCIGATE AUTOMATION (S) PTE LTD

No 1 Bukit Batok Street 22 #01-01 Singapore 659592

Tel: (65) 6561 0488

Fax: (65) 6561 0588

Email: [sales@scigate.com.sg](mailto:sales@scigate.com.sg)

Web: <https://scigate.com.sg/>

Business Hours: Monday - Friday 8:30AM - 6:15PM



Delphin Technology AG  
Lustheide 81  
51427 Bergisch Gladbach · Germany

Phone +49 (0) 2204 97685-0  
Fax +49 (0) 2204 97685-85  
[info@delphin.de](mailto:info@delphin.de) · [www.delphin.com](http://www.delphin.com)

