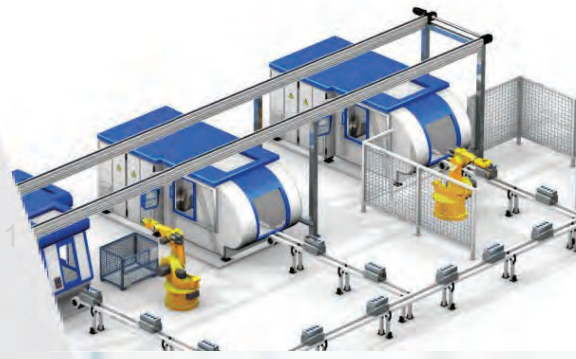


10111100001011



## PRODUCT GUIDE IX

10111100001011

10111100001011



[www.scigate.com.sg](http://www.scigate.com.sg)

10111100001011

10111100001011



10111100001011

10111100001011

10111100001011

10111100001011

10111100001011

10111100001011





# INDUSTRIES WE SERVED.....

Wide range solutions Satisfaction guaranteed

Advanced technology Cost effective

Free application consultation and demonstration

Endless automation systems

Well-trained and dedicated engineers

CONT



## HMI

Proface 4  
Graphic Touch Panel and PLC

## METROLOGY

Micro Epsilon 18  
Displacement Sensor

Solartron Metrology 22  
LVDT

## DRIVE

Control Technique 16  
AC, DC and Servo Drive



# INDUSTRIES WE SERVED.....

Research  
Wastewater      Medical  
Industrial Automation      HDD      Chemical  
Aerospace      **Industry 4.0**  
Precision Engineering  
Marine      F&B      Building  
Internet of Things  
Automation      Semiconductor

## EVENTS

### SENSOR

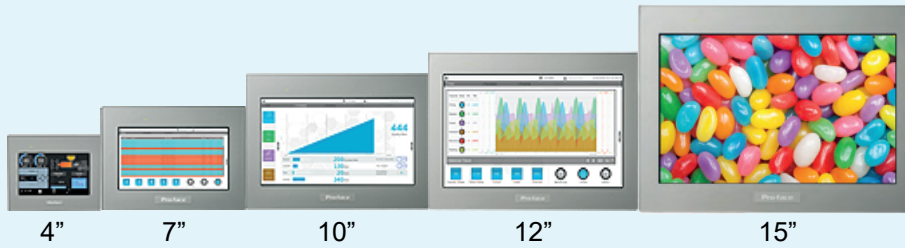
<b>Futek</b>	10
Load Cell and Torque Sensor	
<b>LCM Systems</b>	12
Load Cell for Marine and Offshore	
<b>Pavone Sistemi</b>	14
Weighing Instrument	

### IoT

<b>Delphin</b>	24
Data Logger	
<b>Beanair</b>	26
Wireless Sensor	
<b>Exemys</b>	28
IoT and Telemetry	
<b>Flowline</b>	30
Level Sensor	
<b>Kansai</b>	32
Level Sensor	
<b>STS</b>	33
Pressure Sensor	
<b>Valcom</b>	34
Pressure Sensor	







- Aluminium front panel
- 16 million colors
- Better graphics and font
- Dual ethernet ports

Wide	Size	4"	7"	10"	12"	15"	I/F	COM	LAN	USB	
4:3	Size	5.7"	10.4"				I/F	COM	LAN	USB	SD



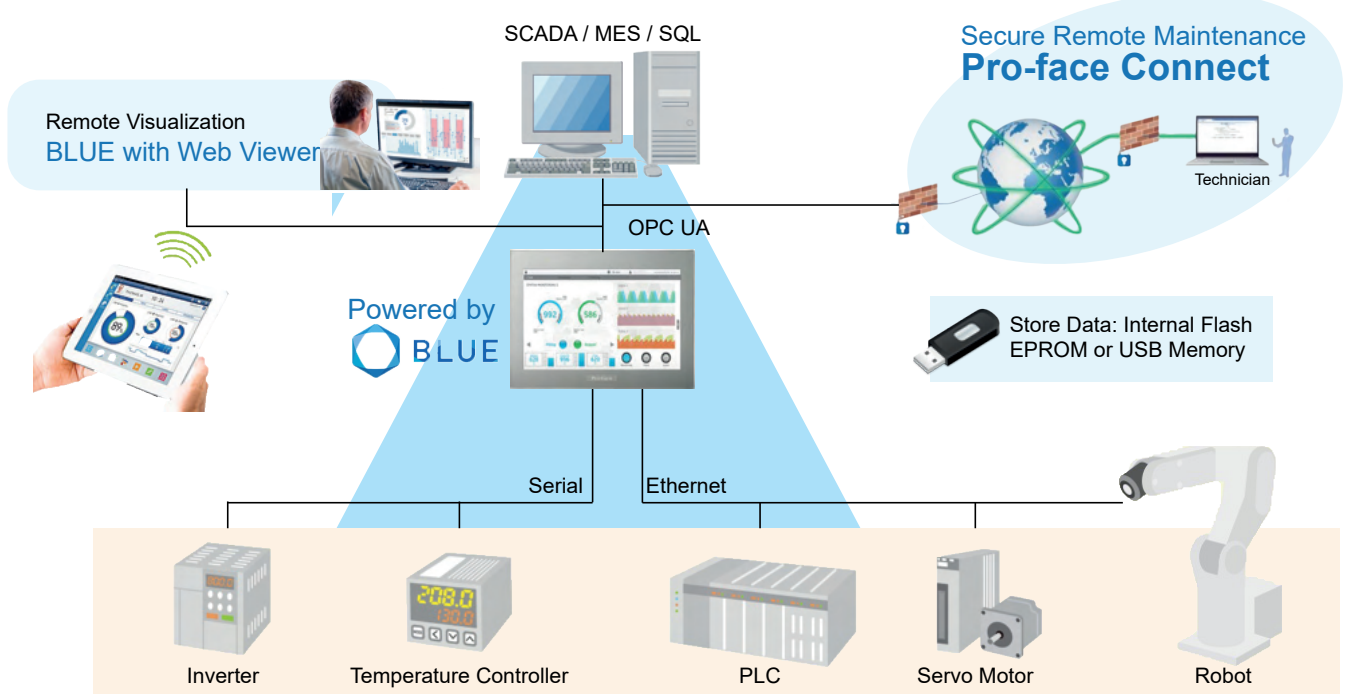
**Create nice-looking HMI applications**

Design HMI screen using our creative yet easy-to-use editor software



- USB 2.0 (Type A)
- USB 2.0 (Micro B)
- Ethernet 1
- Ethernet 2

Seamless and secured connectivity with various devices to enhance their flexibility and increase value



Connect to controllers of various maker, models without programming

**Better Graphics and Font**



Display beautiful fonts with anti-aliasing. Customize gradation and transparency to meet your needs

**See status of equipment or devices in the right place at the right time**



Remote Visualization on PC or Tablet / Smartphone with new Web View features of BLUE.



by Schneider Electric

## Easy Migration

Utilize the current project file with the same software (GP-Pro Ex)

Panel cut-out compatibility

Minimum modification to install new HMI with the same interface and location

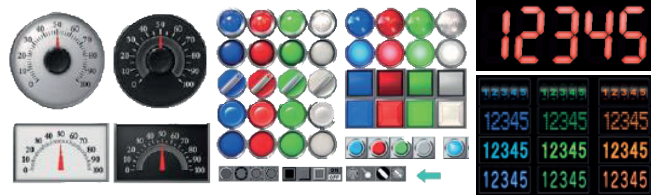


## GP-Pro EX Operation Management for HMI



User-friendly yet powerful

Download sample parts for immediate use  
Wide variety of ready-made sample parts for best screen design, which significantly reduce time spent.



## Pro-face Remote HMI

Software that enables tablets and smartphones to display and operate the exact same screen as the on-site HMI.



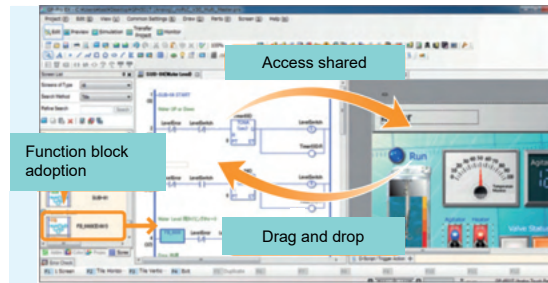
Secure design with full feature functions taking into consideration tablet operations.

Supported OS Android OS, iOS (iPhone, iPad, iPod touch)

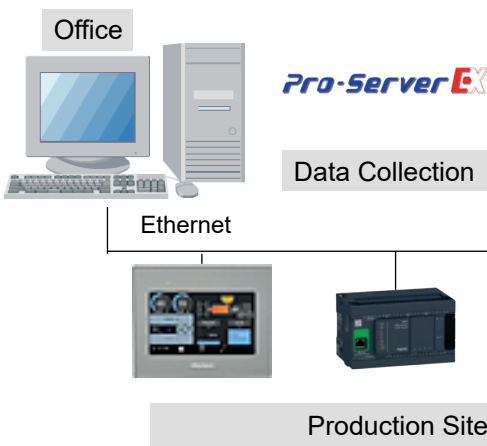
## Logic Sequence Program

Program using popular ladder language

- Screens and logic programming can be edited with the same software.
- Online editing function allows you to make program changes on a computer during operation.



Networking of the entire site to collect data collectively without programming



## Runtime engine **WinGP**

Empower your Windows based PC with projects created by GP Pro EX

Seamless communication with control equipment

No need to develop a driver to communicate with controlequipment such as a PLC or temperature controller.

Cooperation with user database using dedicated API

Settings of WinGP are editable and device address read/write of the connected device can be done by the user application.

## Production Assignment

Collecting accurate information, and analyzing and utilizing all your data will lead to improvement in working processes!



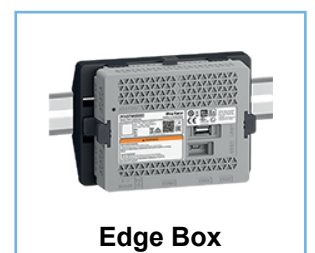
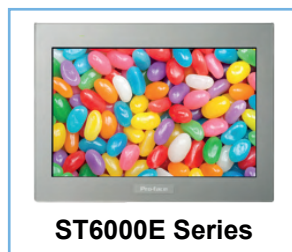
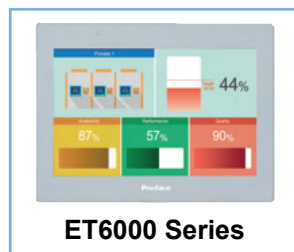
Easy and efficient way to connect OT and IT

IT (Information Technology)

Enable the IT system architectures to build secure robust remote solutions quickly

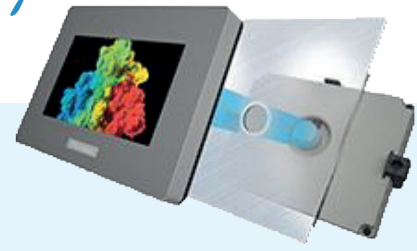
Data	Simple	Complex	Line Management	Edge Box
	<p><b>OT (Operational Technology)</b> Collect and visualize and utilize various data from OT devices efficiently</p>			
		<p>Industrial PC</p> <p>GP-Pro EX BLUE Open Studio</p>	<p>Industrial PC</p> <p>GP-Pro EX BLUE Open Studio</p>	<p>Edge Box</p> <p>BLUE Open Studio</p>
++++				
+++	<p>STM6000 LT4000M STC6000</p> <p>GP-Pro EX</p>	<p>ST6000E SP5000 GP4000</p> <p>GP-Pro EX</p>		<p>Multi Convertor</p> <p>GP-Pro EX</p>
++	<p>ST6000 STM6000</p> <p>GP-Pro EX</p>	<p>STM6000E</p> <p>GP-Pro EX</p>		<p>Gateway Box</p> <p>BLUE</p>
+	<p>ET6000 GP4100</p> <p>GP-Pro EX</p>			

From Entry, Simple HMI to Advanced Powerful HMI, we support all kinds of HMI Needs





*Easy Installation*



## Basic HMI / 22mm Hole Mounting

### STM6000 Series

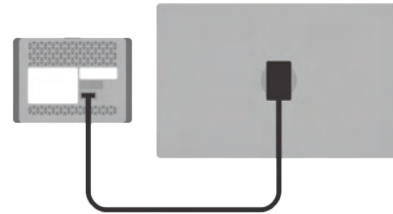
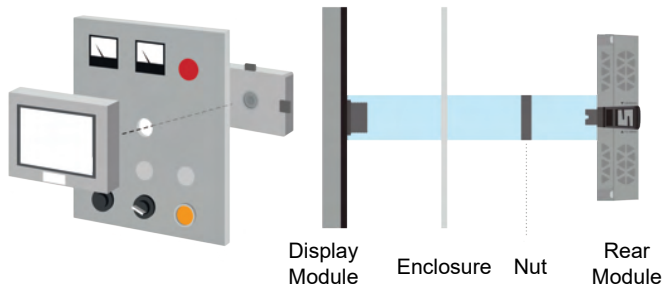
Optimize operations and machine information.

Size: 4" Wide, 7" Wide  
 I/F: COM, LAN, USB



### Easy and Fast Installation

STM6000 can be installed easily as only a  $\phi 22\text{mm}$  mounting hole is used as compared to conventional rectangular cut out hole.



### Flexible Installation

Thanks to modularity design, for specific applications (space, temperature, or vibration constraints) product can be separated with cable accessory 3m, 5m, 10m to install the display module on the panel door and the rear module on DIN rail with dock station adapter.

## Advanced (Modular HMI)

### SP5000 Series

Flagship model achieving high performance and robust network security  
 The SP5000 series is an HMI that provides information quickly and efficiently, and promotes "smartification" of your factories

*Best Performance in Class*



Size: 7 Wide, 10" Wide, 10", 12" Wide, 12", 15" Wide, 15", 19" Wide  
 I/F: COM, LAN, USB, SD, CFast, DVI-D



#### Premium Display or Advance Display



Use handwritten memos for task handover

#### Open Box

Run Windows OS  
 Third Parties application

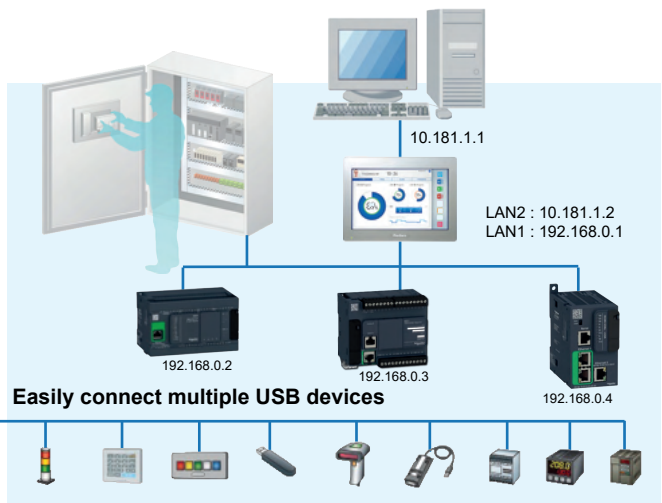


#### Improve Performance

- CPU computing power: About 2x
- Graphic Engine: About 3x
- Start-up time: About 15x
- Free storage space: About 3x
- Data access speed (Read & Write): About 2x

#### Network Segmentation

All SP5000 series have two ethernet ports, can support IT & OT network for network security.



### Easy replacement without special tools, knowledge and programming software.

Detachable CPU | Open Box or Power Box | SD | File | CFast

#### CFast/ SD Card Slot

Set up screens by simply inserting a CFast (Open Box) or SD card (Power Box). No need for a separate PC.

# Basic HMI + PLC 22m Hole Mounting

## LTM4000 Series

*Flexible*

Hybrid display with control function  
Since the release of the world's first controller with display (CGP model) in 1996, our products have gained a reputation for enabling customers to save space as well as equipment costs.

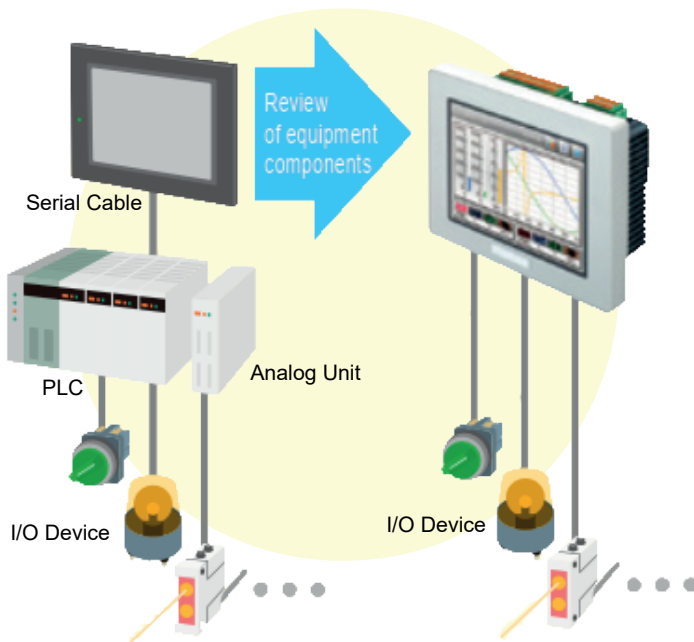


- Size
- 3.5"
- 5.7"
- I/F
- COM
- LAN
- USB
- DIO
- AIO
- CANopen



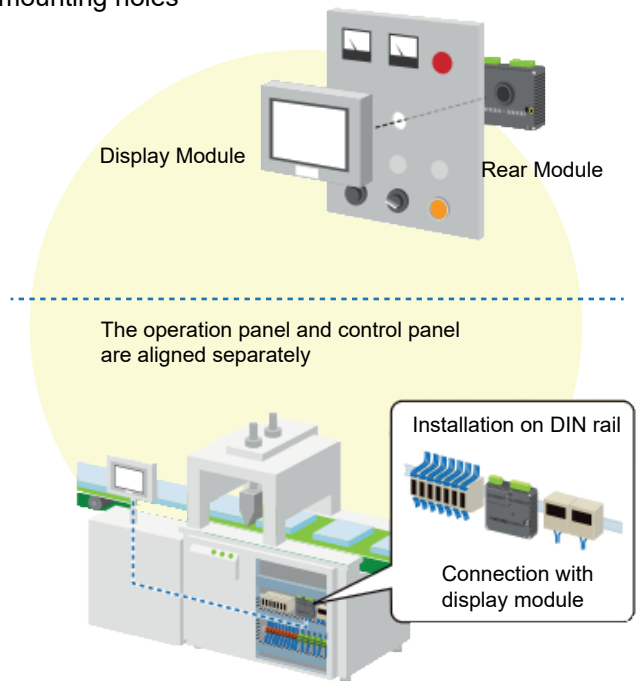
### Simpler design with built in PLC

Connectivity with a range of devices



### Easy to create control panels

Easily retrofittable, requiring only 22φ circular mounting holes



<p>LTM4000 Series</p>	<p><b>DIO/AIO</b></p> <p>Built-in DIO: Max. 20 inputs (includes 2 fast inputs), Max. 10 outputs, Max. 2 fast outputs</p> <p>Built-in AIO: Max. 2 inputs, Max. 2 outputs, Max. 2 temperature inputs</p>	<p>Sensor, Motor, Lamp, Inverter, Switch, and etc...</p>
	<p><b>CANopen (Master)</b></p> <p>CANopen supported as Master: Max. 63 CANopen slave devices</p>	<p>Modicon TM3 Module      General CANopen devices</p>
	<p><b>Ethernet Serial</b></p> <p>Ethernet port and SIO (RS-232C / RS422 / RS485) port integrated</p>	<p>Actuator, Robot, Inverter, Motion Controller, PLC, etc...</p>
	<p><b>USB</b></p> <p>USB Type A available</p>	<p>EZ Series      USB Devices</p>



*Entry HMI*

## ET6000 Series

Enough visualization

Designed with simple, common application and cost effective in mind.

*Good enough*

*Cost effective!*

- Wide: 7", 10", 12", 15"
- I/F: COM, LAN, USB



### Smooth Operation



12" wide and 15" wide make it easier machine operation because of all information at a glance.

### Best in class Visualization



Right enough memory size for more images to create nice looking screens

### High resolution and more colors



Display : 16M colors  
Resolution : 1,366 x 768, 1,280 x 800, 1,024 x 600, 800 x 480

### Connect with various devices



ET6000

Ethernet

Serial

USB

USB



For Operation

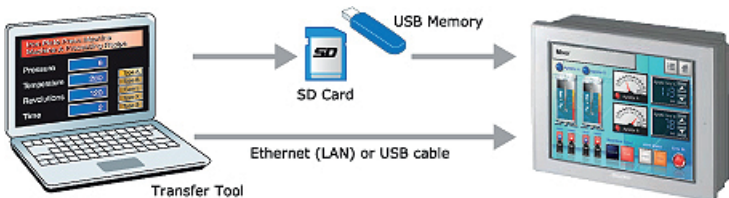
For Maintenance

## GP4000 Series



- Size: 5.7", 7" Wide, 7.5", 10.4", 12.1"
- I/F: COM, LAN, USB, SD, Expansion unit (Video unit)

*Advanced HMI*



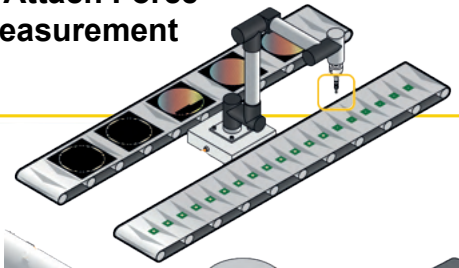
Download project file using USB flash memory or SD card

The data transfer tool can be downloaded for free from the Web

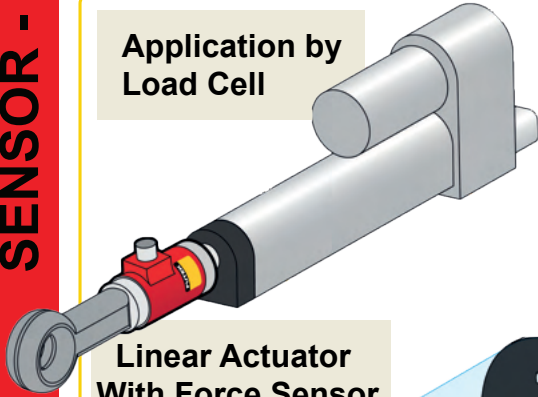


Pro-face Standard HMI, GP4000 Series flexibly satisfies customers' needs for many years.

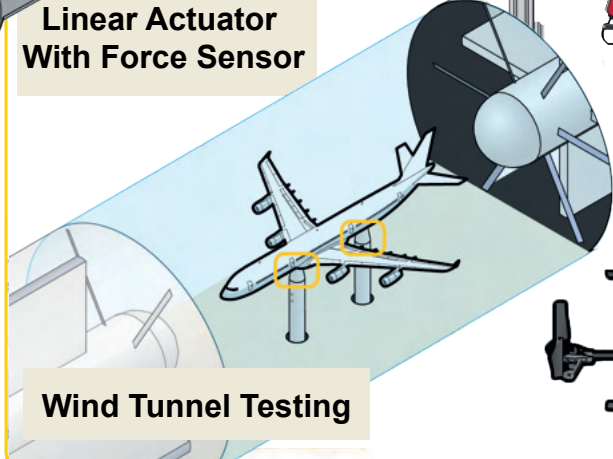
## Die-Attach Force Measurement



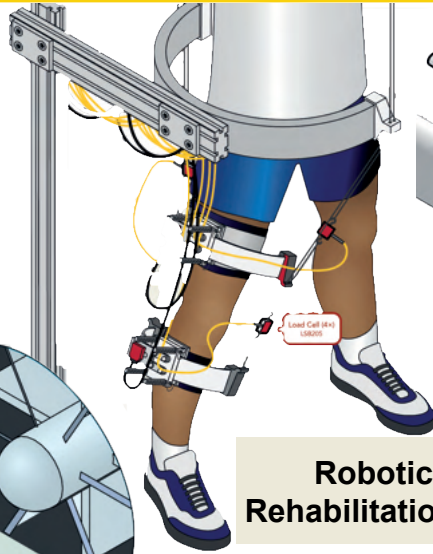
Application by Load Cell



Linear Actuator With Force Sensor



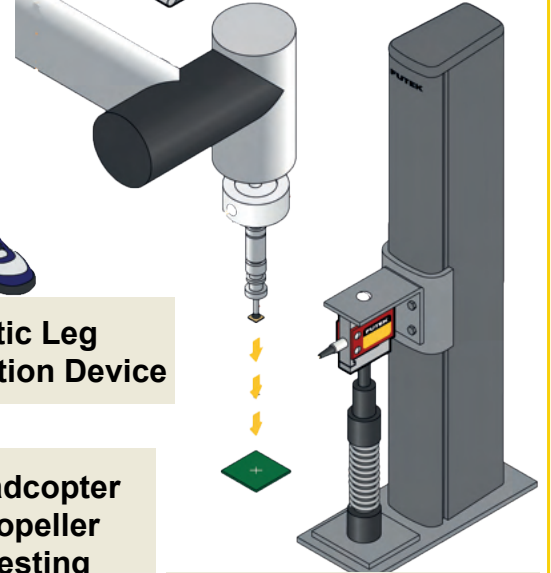
Wind Tunnel Testing



Robotic Leg Rehabilitation Device



Quadcopter Propeller Testing



Spring Testing System



### Miniature S-Beam Jr. Load Cell 2.0 (LSB205)

Introducing the new LSB205 Miniature S-Beam Jr. Load Cell with TEDS. Capable of measuring both tension and compression forces from 1 to 100 lbs. This impressive load cell features an improved fatigue life and off center loading capabilities due to its construction with heat-treated stainless steel. The miniature frame includes an integrated TEDSchip and PT-1000 temperature sensor. With exceptional overload protection, this model is very adaptable for various industry applications.

## LOAD CELLS • TORQUE SENSORS • MULTI-AXIS SENSORS



LOAD CELL



S-Beam Series



In-line Series



Load Button Series



Thru-Hole Series



Torque and Thrust Biaxial Sensor



Miniature Series



Canister Series



OEM Solutions



Working with USB Output



Working with Handheld



Working with Panel Mount



Data logging



Live graphing



16 channels



Math (fx)



**Application by Torque Sensor**

**Power Tool Measurement**

**Miniature Torque Screwdriver**

**Bottle Cap Torque Meter**

**Motor Test Stand**

**Torque/Motor Test Stand**

**Servo Motor Torque Control**

**TORQUE SENSORS**

**Reaction Series**

**Rotary Shaft-to-shaft**

**Rotary Drive**

**Rotary Hex**

**Rotary Series**

**MULTI-AXIS SENSORS**

**Stick Shift Load Cell**

**Triaxial Load Cell**

**Low Profile Thrust and Moment Load cell**

**Biaxial Load Cell**

**INSTRUMENTS**

**IAA Series Amplifier**

**USB Solution**  
32 Bit Digital Resolutions,  
38,400 Sample per Seconds

**Amplifier with Digital and Analog Output**

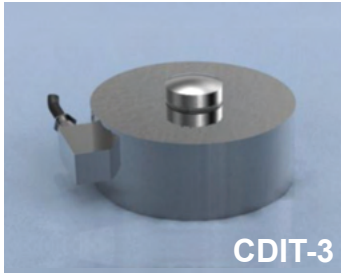
**IHH500**  
High Resolution Display

**IPM650**

\*For more information, please log on to <http://www.scigate.com.sg>

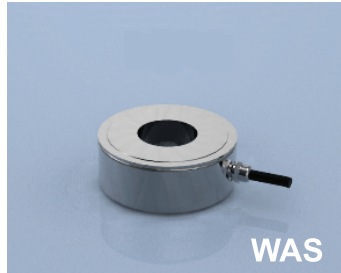


**Compression Load Cell**



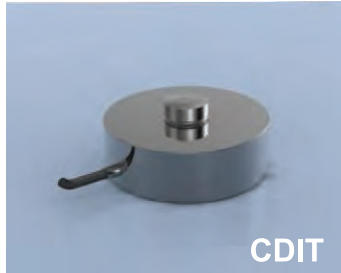
**Low profile compression load cell**

- Small physical size
- Stainless steel
- 100kg to 200te
- IP68



**Through-hole load cell**

- Force washer
- Stainless steel
- 12.5kN to 540kN
- IP66



**Low profile compression load cell**

- Small physical size
- Stainless steel
- 50kg to 5te
- IP67



**Column type load cell**

- High capacity
- Stainless steel
- 2te to 1000te
- IP67

**Tension and Compression Load Cell**



**Stud type load cell**

- Compact design
- Stainless steel
- 100N to 50kN
- IP65



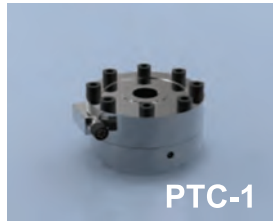
**S type load cell**

- Fully welded construction
- Stainless steel
- 250kg to 20te
- IP68



**S type load cell**

- High accuracy
- Alloy steel
- 1500kg to 5000kg
- IP67



**Low profile pancake load cell**

- Stainless steel
- 5kN to 2000kN
- IP68



**Column load cell**

- Female and male threads
- Stainless steel
- 1te to 150te
- IP66/67

**Beam Load Cells**



**Stud type load cell**

- Compression design
- Stainless steel
- 10kg to 500kg
- IP68



**Shear beam load cell**

- Stainless steel
- 500lbs to 10,000lbs
- IP68
- Unique blind loading hole

**Various Custom Load Cells Solutions**



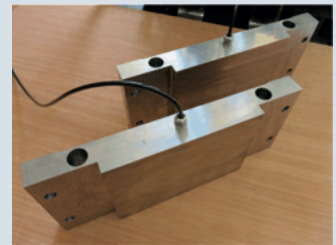
4.75te Load Shackles for Subsea Research (4500m)



500te Wireless Compression Load Cell



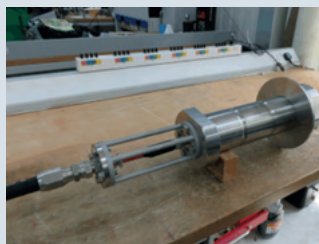
ATEX/IECEX Tension & Compression Load Cell for Oil Well Application



20te Beam Load Cells for Dump Truck



1888te Dual Bridge/ Bi-Directional Load Pin



200te Load Pin for Calm Buoy Mooring Line Monitoring



17te Submersible (30m) Data Logging Load Link



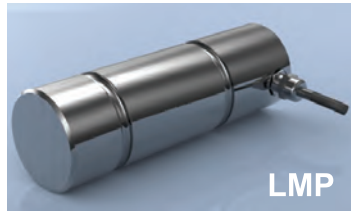
42te Wireless Load Pin





ATEX load cells, load pins and load shackles

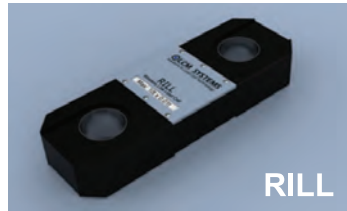
## Tension Load Cell



LMP



WLL



RILL



LPC

- Standard Load Pins
- 500kg to 1500te
  - Stainless steel
  - IP67
  - Simple to install

- Telemetry load link
- Stainless steel
  - 5te to 100te
  - IP67 sealed
  - Supplied with transit case

- Telemetry load link
- Lightweight aluminum
  - 1te to 300te
  - IP67 sealed
  - Supplied with carry case

- Shackle/Clevis Load Pins
- 1te to 1500te
  - Stainless steel
  - IP67
  - Special versions available



- Wire and wireless shackle load cell
- 1te to 1000te
  - High tensile carbon steel
  - IP67
  - Submersible versions available

### Wireless Large Format Display



### Wireless Tablet Display



Wireless Shackle



Wireless Load Link



### Wireless Handheld Display



Wireless Range Extender to 1.6km



Wireless Modbus Gateway

## Instrumentation



ICA - 4-20mA, ±10V, 0-10V, 0-5V



DCELL - RS485 Modbus



DSCUSB - USB



SGA - 4-20mA or 0-20mA, ±10V, ±5V, 0-10V, 0-5V



PMD - Display : Analog output  
Alarm output  
Signal output



TR150 - Digital Display



T24 - Wireless Portable Display

## Various Custom Load Cells Solutions



2000te Tension & Compression Load Cells with accuracy of 0.08%



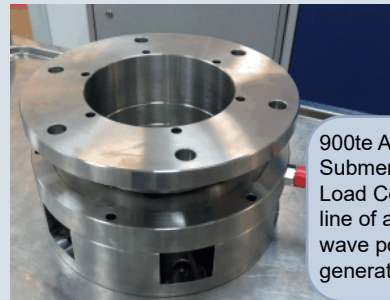
5.15te Y Load Links for Ship Deck Crane



225te Annular Load Cell for Bridge Structural Monitoring



750 / 200te High Accuracy Compression Load Cells with 0.15% accuracy



900te Annular Submersible (80m) Load Cell for mooring line of an offshore wave power generation system

12te Stainless Steel Wireless Load Links



\*For more information, please log on to <http://www.scigate.com.sg>



Founded in 1963 our company went through all levels of technological developments. Today we provide integrated solutions for weighing, process control and measurement. Our wide range of products and systems, including those developed internally and worldwide traded, guarantees every kind of weighing and measurement project for all industrial applications: steel mill, metallurgy, paints, tanneries, concrete mill, paper mill, glass industry, pharmaceutical, chemical, petrochemical, food & beverage and packaging.



**DAT 1400**

- Resolution: 24Bits ADC
- Acquisition Frequency: 1KHz
- Data Logger (Option)
- Fieldbus: Profinet, EtherCAT, Ethernet IP, Ethernet.



**MCT 1302**

- Touch screen weight indicator
- Perfect for static weighing and loading-unloading and multi-component dosage
- Programmable function



**UWT 6008**

- Support 8 Load Cells
- Monitor all load cells and generate alarms due to excessive load cell signal drift, loss of connections, failure of load cells, unbalanced weight distribution.
- Emulative control allows the continuity of work of the weighing system even in case of failure on one of the load cells, until the replacement of the same.
- Compensation algorithm to equalize legs angles.



**TESTER 1008**

- Four Channels Weighing Indicator
- Calibrator / Simulator Load Cells



**CGS4-C**  
Junction Box

**MH**

- Adjustable radial and tangential mounting
- Allow normal expansion and contraction tank



**MKX**

- Adjustable radial and tangential mounting
- Allow normal expansion and contraction of tank
- Replace load cell without external jack
- Height adjustment



**Load Foot**

- Rubber base
- Swivelling
- Height adjustment



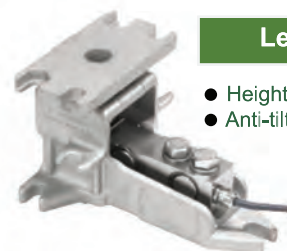
**DE**

- Anti-tilting Load Foot
- Replace load cell without external jack



**Levermount**

- Height adjustment
- Anti-tilting







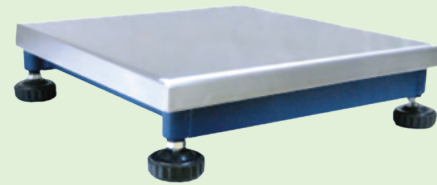
### MC315 Weighing Indicator

- 21 key keyboard alphanumeric keypad
- 6-digit display 20mm height, 8 status LED
- Housing material stainless steel
- Power up to 4 load cells
- Supply AC100~250V
- Table-top, wall-mount or column mount with bracket
- 2 digital input, 6 digital output, RS485 modbus RTU



### PM Platform

- Single off-centre load cell 300kg
- Support 800x800mm



### Off-Centre Load Cell

Low profile off-centre load cell is high performance single point load cell. There are insensitive to off-centre loads or moments, ideal for bench platform.

#### PS019



Capacity: 15~400kg  
Size: 800x800mm max.

#### PS014



Capacity: 300~3000g  
Size: 200x200mm max.

#### PSZL



Capacity: 1&2 tonne  
Size: 1200x1200mm

#### PSTA2



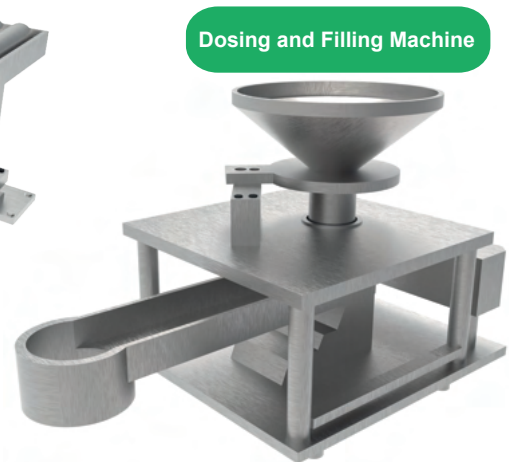
Capacity: 6~40kg



Silo Tank



Belt Weighing and Feeding



Dosing and Filling Machine

### ATEX Solutions



Wall Mount DAT S 1400



Floor Standing MCT S 1302



Load Cell DDR



EXD E 70/2

**The General Purpose Drive**

**Commander C200**

0.25 kW - 132 kW (0.33 hp to 200 hp)  
100 V | 200 V | 400 V | 575 V | 690 V

The drive for a broad range of general applications.

**Key Highlights**

**Simple, reliable motor control**

- Straightforward installation and commissioning
- Set just 4 parameters to get your drive started
- Up to 180% overload for high torque applications
- Equipped with the latest energy saving features

**Commander C300**

**Commander C300**

0.25 kW - 132 kW (0.33 hp to 200 hp)  
100 V | 200 V | 400 V | 575 V | 690 V

The drive for a broad range of general applications requiring STO, certified to SIL3/PLe safety rating and compliant with EN/IEC 61800-5-2.

- Dual Safe Torque Off (STO)
- Plug-in options for advanced control
- On board PLC
- Wide availability and outstanding service



**QR Code for Easy Access to Support Documents**



**Easy motor pairing and performance control**

- V/Hz for advanced performance
  - 100% torque available to 1 Hz
  - Slip compensation
  - Square law V/F mode
  - Dynamic V/F mode
  - Auto tune (stationary and rotating)
- Open loop vector
- Fixed boost by default for easy set-up
  - Multi-motor control
- Enhanced open loop RFC
  - Closed current loop for greater stability
  - Auto tuning (stationary and rotating)



**Robust and reliable design**

- PCBs conformal coated for resilience to harsh environments
- Patented air flow system cools and protects components
- Voltage tolerance for smooth operation during variable supply
- Intelligent 3 speed replaceable fan with failure detection
- Trip avoidance features take action instead of tripping out:
  - Load shedding reduces speed at current limits
  - Ride-Through momentary power interruptions and voltage sags prevent trips out
- High overload capability - 180% for 3s (RFC-A mode) or 150% for 60s (Open loop mode)
- Ingress protection: IP21-UL open class (NEMA 1)

**More control, less cost**

- On board PLC
- Built-in independent PID control

**Energy saving**

- Dynamic V/Hz - improves efficiency by reducing motor voltage during low demand
- 98% efficient - only 2% of energy is lost during the conversion process
- Low power standby mode - drives can be idle for significant periods, saving energy
- Automatic 3-speed cooling fan - keeps energy usage & acoustics to a minimum by intelligently responding to load and the environment
- Square Law V/F mode - optimized for quadratic loads like pumps & fans to reduce motor losses

**Onboard I/O**

- 3 x Analog I/O
- 5 x Digital I/O
- 1 x Relay
- 2 X STO (C300 only)



**SI-I/O Module**

- 4 x Digital I/O
- 3 x Analog inputs (default) / Digital inputs
- 1 x Digital input
- 2 x Relays



Fixed LED	Remote Keypad RTC
IP66 Remote Keypad (LCD)	RS485 Cable
Operator Interface	AI-Backup Adaptor
AI-Smart Adaptor	AI-485 24V Adaptor

**Communications Modules**

AI-485

SI-CANopen

SI-DeviceNet

SI-PROFINET

SI-PROFIBUS

SI-EtherCAT

SI-Ethernet





# UNIDRIVE M700

0.75 kW - 2.8 MW Heavy Duty - 200 V | 400 V | 575 V | 690 V



### Typical applications

Speed & position control for gearing & ratio control, winding, web handling, cutting, test stands, printing, packaging machines, textiles, woodworking, tire manufacturing and hoists.

### Key Highlights

#### Class leading performance with onboard real-time Ethernet

#### Optimize system performance

- High bandwidth motor control 3KHz
- Flexible speed & position feedback
- Maximize throughput
- Onboard Advanced Motion Controller
- 1.5 axes control
- Flexible control systems
- Integrate directly with safety systems
- Onboard STO
- SI-Safety for safe motion

#### Flexible communications

- Synchronized RTMoE comms
- Fieldbus communications: PROFINET, Ethernet/IP, Modbus TCP/IP & EtherCAT
- Onboard IT & HTTP web page comms
- Conform to safety standards
- Ideal for centralized & decentralized control
- MCi module advanced system control capability
- Onboard PLC for logic programs
- IEC61131-3 programming
- Onboard real-time Ethernet (IEEE 1588 V2 PTP)

### More Advanced Control Mode

- Open loop permanent magnet motor control (RFC-S)
- Closed loop Rotor Flux Control for induction motors (RFC-A)

#### Motor Position Feedback Modules:

- SI-Encoder
- SI-Universal Encoder



"Engineers can connect to the drive from any web-enabled device"



### Industrial Internet of Things

1. Operational efficiency
2. Smart machine optimisation
3. Mass customization
4. Quality control
5. Remote diagnostics and monitoring
6. Predictive maintenance

### Applications Modules

#### SI-Applications (M700)

- 2nd processor module, allows SyPTPro programs to be re-compiled for M700

#### MCi200 (M600/M700, E200/E300)

- 2nd processor provides advanced machine control via Machine Control Studio

#### MCi210 (M600/M700, E200/E300)

- MCi200 + dual port Ethernet interface on processor and additional I/O



#### Onboard I/O

- 5 x Analog I/O
- 8 x Digital I/O (including 2 x high speed I/O [250 µs])
- 1 x Relay Output
- 1 X STO



#### SI-I/O Module

- 4 x Digital I/O
- 3 x Analog inputs (default) / Digital inputs
- 1 x Digital input
- 2 x Relays

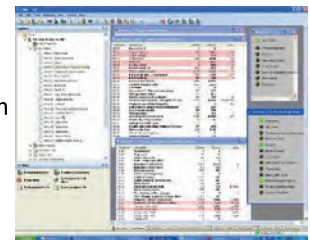


#### Remote I/O

### Commissioning and monitoring software

#### Unidrive M Connect - Commissioning tool

Based on Control Techniques' 25 years' experience, Unidrive M Connect is our latest drive configuration tool for commissioning, optimizing and monitoring drive/system performance.



### Automation and motion programming software

#### Machine Control Studio - Programming tool

IEC 61131-3 motion and automation programming

- Structured Text (ST)
- Function Block Diagram (FBD)
- Structured Function Chart (SFC)
- Ladder Diagram (LD)
- Instruction List (IL)
- Continuous Function Chart (CFC)

#### IntelliSense:

- Consistent & robust programs
- Speed up software development

Access to open-source community function blocks

Support for customers' libraries:

- On-line monitoring of program variables

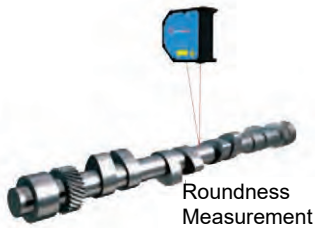
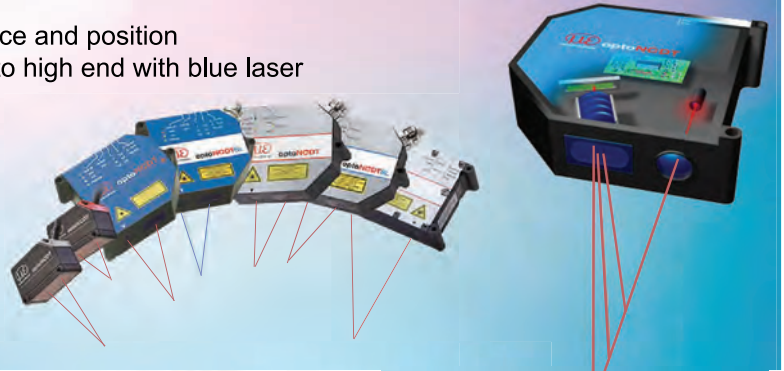




More Precision. Precise . Reliable

Triangulation Laser sensors for displacement, distance and position

- Worldwide largest range of sensors from low cost to high end with blue laser
- Measuring range from 2 to 1000mm
- Fast measurements up to 49kHz
- Compact design with integrated controller
- Non-contact and wear-free
- Large distance from the measurement object
- Small light spot for smallest parts
- Precise measurement results with high dynamics
- Almost independent of surface properties



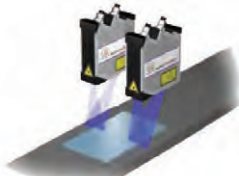
Series	Measuring Range (mm)	Linearity ±% FSO	Repeatability μm	Measuring Rate (kHz)	Output	Functions
optoNCDT1220 optoNCDT1320	10, 25, 50, 100, 200, 500	0.1	1	2	4~20mA, RS422	Compact and high speed
				4		
optoNCDT1420 optoNCDT1420 CL1 optoNCDT1420LL	10, 25, 50, 100, 200, 500 10, 25, 50	0.08	0.5	8	4~20mA, RS422 / EtherCAT / PROFINET / EtherNet/IP	Smart, fast and precise
optoNCDT1900 optoNCDT1900LL	2, 6, 10, 25, 50, 100, 200, 500 2, 6, 10, 25, 50	0.02	0.1	10	4~20mA, RS422 / EtherCAT / PROFINET / EtherNet/IP	Innovative laser sensor for advanced automation
optoNCDT2300 optoNCDT2300BL optoNCDT2300LL optoNCDT2300-2DR optoNCDT2310	2, 6, 10, 25, 50, 100, 200, 300 2, 5, 10, 50 2 10, 20, 40, 50	0.02	0.0015	49	4~20mA, RS422 / EtherCAT / PROFINET / EtherNet/IP	High speed for dynamic application
optoNCDT1750BL optoNCDT1750-DR optoNCDT1710-50 optoNCDT1710BL optoNCDT1760 optoNCDT1910	20, 200, 500, 750 2, 10, 20 50 50, 1000 1000 500, 750	0.08 0.08 0.1 0.1 0.1 0.07	0.8 0.1 7.5 7.5 0.1 0.02	7.5 7.5 2.5 2.5 7.5 9.5	4~20mA, 0~5V / 0~10V / RS422 / Ethernet	Blue laser, good for metal and organic materials
thicknessSENSOR	10, 25	10~40 μm	-	4	4~20mA, 0~5V / 0~10V / RS422 / Ethernet	Non-contact thickness measurements of strip and plate material

2D/3D Laser scanners for profile measurement

- High accuracy and profile frequency
- High performance signal processor
- Compact design with integrated controller
- Interfaces for integration on customer side



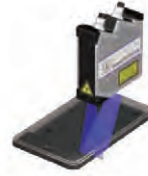
Weld Seam Position



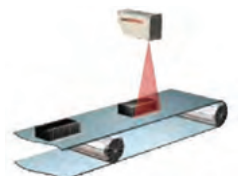
Width Control



Windshield Profile



Alignment of Phone Cover

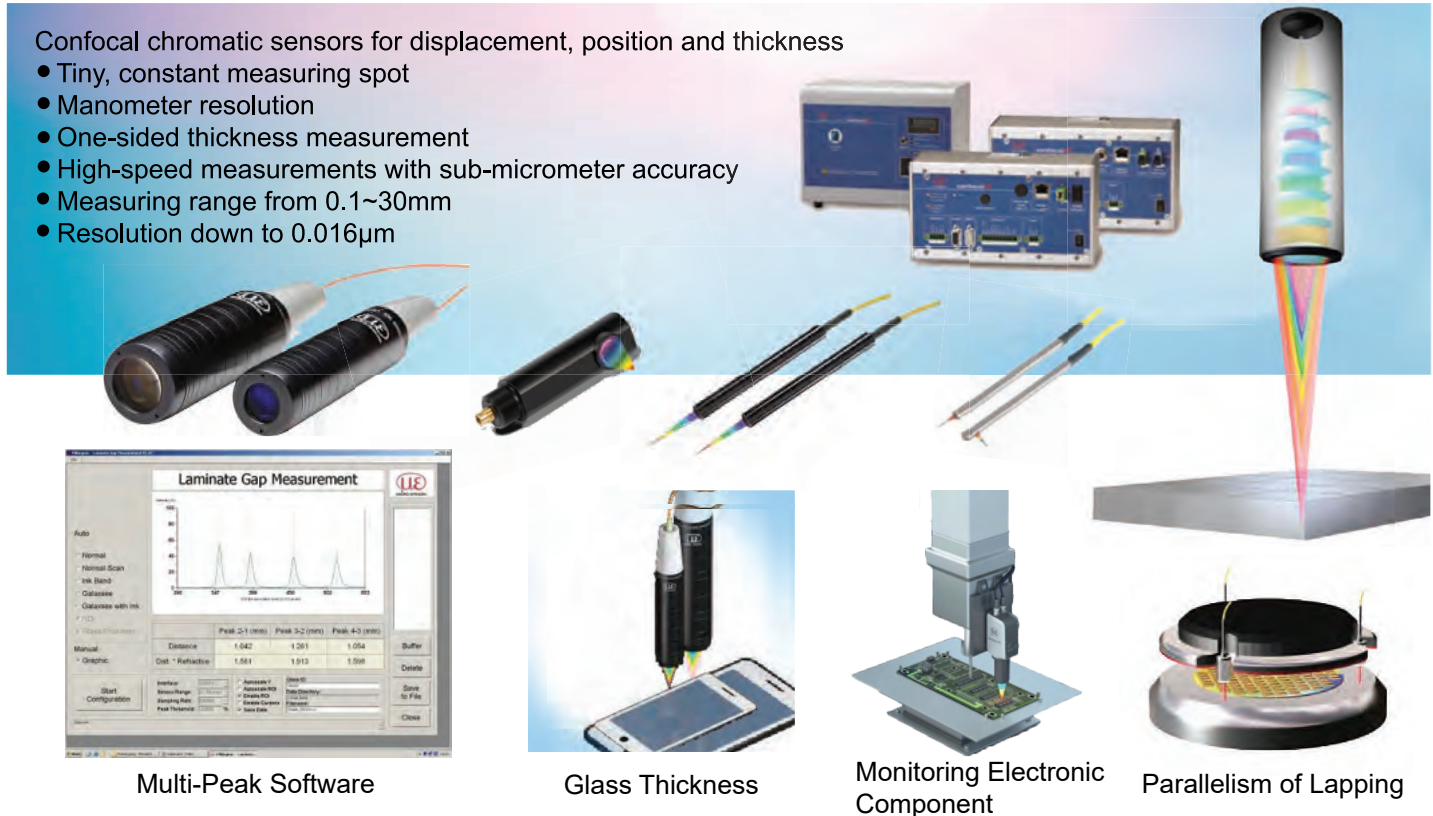


IC Coplanarity



Confocal chromatic sensors for displacement, position and thickness

- Tiny, constant measuring spot
- Manometer resolution
- One-sided thickness measurement
- High-speed measurements with sub-micrometer accuracy
- Measuring range from 0.1~30mm
- Resolution down to 0.016µm



Multi-Peak Software

Glass Thickness

Monitoring Electronic Component

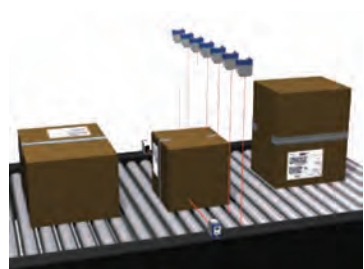
Parallelism of Lapping

**optoNCDT ILR - Non-contact laser distance sensors**

- Extremely large measuring range from 0.5m to 270m
- Integrated heating option for outdoor environments
- Robust and compact design
- Outstanding repeatability and response time
- Use with and without reflector



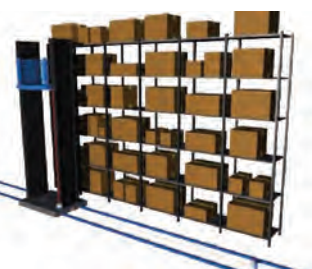
Series	Measuring Range mm	Linearity	Repeatability	Response Time	Output	Functions
optoNCDT ILR1030/1031	No reflector 0.2 - 15 With reflector 0.2 - 50	± 25 mm	5 mm	0.01 ms	4~20mA	Compact laser distance sensors
optoNCDT ILR2250-100	Measuring range 0.05 - 150	± 1 mm	0.5 mm	0.05	4~20mA RS422 / USB / PROFINET / EtherNet/IP / IO-Link	Precise laser distance sensors
optoNCDT ILR1171-125	Measuring range 0.5 - 270	± 60 mm	25 mm	0.025 ms	4~20mA RS232/ RS422	Laser distance sensors



Classification and sorting



Robot Car



Storage Rack Positioning



Container Positioning



MICRO-EPSILON

More Precision. Precise . Reliable



**USB thermal imagers**

- Non-contact measurement
- Temperature range from -20°C to 1900°C
- Real-time thermography
- Excellent thermal sensitivity and resolution
- Compact design with USB interface

Model	Description	Temperature	System Accuracy
TIM 160S	Miniaturized thermal imaging camera with USB interface	-20°C to 900°C	±2°C to 2%
TIM QVGA TIM QVGA-HD	Thermal imaging camera with high resolution and sensitivity	-20°C to 900°C	±2°C to 2%
TIM VGA	Worldwide smallest VGA thermal imaging camera	-20°C to 900°C	±2°C to 2%
TIM M1	Thermal imaging camera for hot metal surface	-45°C to 1800°C	±1% of reading
TIM M1 TIM M-08	Thermal imaging camera with blocking filter and cooling ensure for hot metal surfaces	-45°C to 1800°C	±1% of reading



**Non-contact IR temperature sensors**

- Temperature ranges from -50°C to 2200°C
- Sensors for the metal industry
- Sensors for the glass industry
- High-speed model
- Also suitable for the Ex area

**thermoMETER**

- Infrared pyrometer for non-contact temperature measurement
- Temperature ranges from -50 °C to 1600 °C
- Compact design for non-contact temperature measurement without influencing the object
- Monitoring of hot, fast moving or difficult-to-access objects
- Robust, wear-free and reliable



**thermoMETER CTM2/M3**

- Version for metal production, temperature ranges from 50°C to 1600°C

**thermoMETER CTM4**

- Fast measurement of metals and non-metals due to large, short-wave spectral range



**thermoMETER CThot**

- For difficult ambient conditions up to 250°C ambient temperature without cooling

**thermoMETER CS / CSmicro / CSLaser**

- Compact, miniature and low cost
- Temperature ranges from -50 °C to 1030 °C
- Robust, silicon-coated lens
- Integrated controller
- Scalable analog output: 0 - 10V / 0 - 5V
- Ideal for OEM, also available as two-wire version and high-resolution models



**thermoMETER CT / CTfast**

- Extremely low cost and high accuracy
- Temperature ranges from -50 °C to 975 °C
- Short response times from 3 ms
- Up to 180 °C ambient temperature without cooling



**thermoMETER CTLaser / CTLaserFAST**

- Precise pyrometer with laser sighting
- Temperature ranges from -50 °C to 975 °C
- Infrared sensor heads with optical resolution up to 75:1, from a measurement spot of 0.9 mm
- Double laser marks the exact spot location from a spot size of 1 mm
- Response time from 120 ms



**thermoMETER TIM 8**

- Intelligent spotfinder pyrometer
- Temperature ranges from -20°C to 900°C
- Robust and compact pyrometer with motorized focus
- Excellent optical resolution
- Autonomous operation with automatic spotfinder and direct analog output
- For temperature measurements in machine building and in automation



\*For more information, please log on to <http://www.scigate.com.sg>



**Eddy current displacement sensors for displacement and position**

- High resolution and accuracy
- Fast measurements up to 100kHz (-3dB)
- Insensitive to dirt, pressure and oil
- Ideal alternative to inductive displacement sensors
- Customized sensor design



**Capacitive sensors for displacement and position**

- Non-contact, wear-free measurement
- Unmatched accuracy and stability
- High bandwidth for fast measurements
- Temperature range -270°C to +200°C
- Modern controller technology



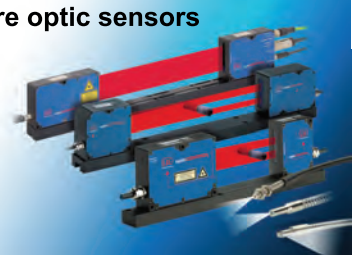
**Colour sensors & LED analysers**

- Colour recognition, colour testing and colour measurement
- Simple quality control
- Easy and fast commissioning
- Sensors for numerous fields of applications
- Measurement accuracies  $\Delta E$  to 0.08



**Optical micrometer and fibre optic sensors**

- Highest resolution and accuracy
- Wear-free
- Ideal for process control
- Measurement of edge/position, diameter, gap segment



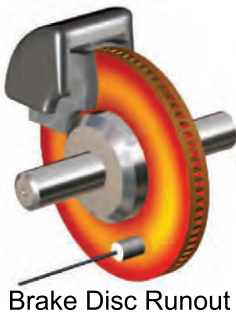
**Draw-wire displacement Sensors**

- Measuring ranges up to 50,000mm
- Resolution towards infinity
- Easy, fast and flexible mounting
- High operational safety & long service life
- Analog and digital outputs

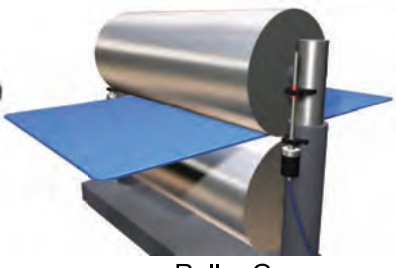


**Magneto-inductive displacement sensors**

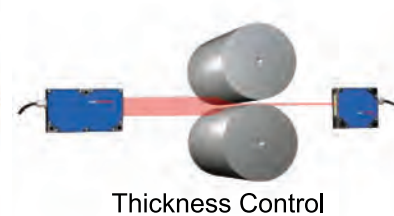
- Large measuring range
- Analogue, digital, PWM outputs
- High measuring rate
- High resolution
- Compact sensor design
- High volume OEM custom solutions



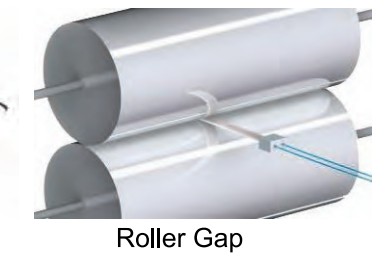
Brake Disc Runout



Roller Gap



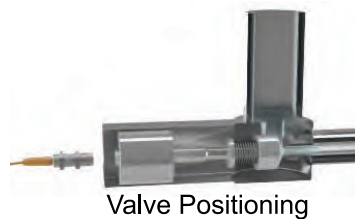
Thickness Control



Roller Gap



Position of Bus Lift



Valve Positioning



Wind Turbine



Lift Position



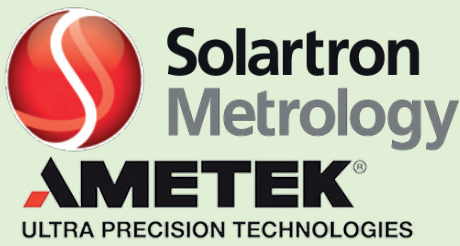
Crane Outrigger Position



Train Door Position



Wire Forklift



**DIGITAL ORBIT NETWORK**

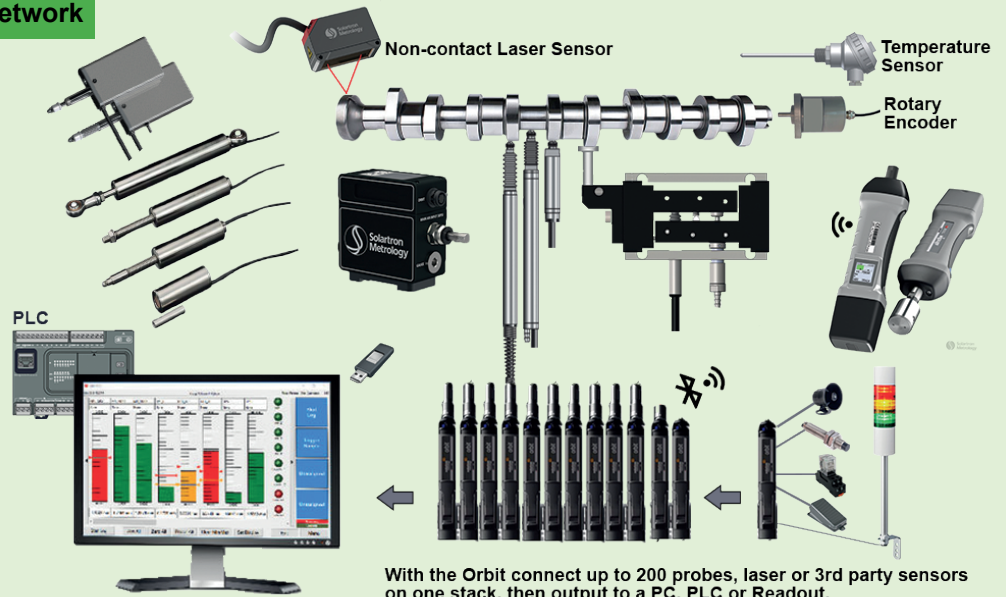
DP/S, DP/P	Body Diameter
DT/S, DT/P	Ø3, Ø6, Ø8, Ø9, Ø12
DZ/S	
DW/S, DW/P	Actuation
DP/V	Spring Push
DJ/P	Pneumatic Push
D6J/S, D6J/P	Vacuum Retract
D6S/D6T	
D12P/S, D12P/P	Contact Force
D12P/S, D12P/P	0.03N, 0.18N, 0.5N, 0.7N
D3P/S	



**Orbit® Digital Measurement Network**

A faster throughput, lower cost, & better data collection than any analog or conventional system with its calibrated probes, multiple gateways, and ability to connect 3rd party sensors

- Ultra flexible network for gauging and linear measurement
- Contact and non-contact measurement
- High speed measurement
- Interfaces to PC and PLC
- Orbit® library based on Microsoft .NET Framework
- Windows® 11 and 10 in 64 bit



With the Orbit connect up to 200 probes, laser or 3rd party sensors on one stack, then output to a PC, PLC or Readout.

**Orbit** *A universal truth for long term confidence of reading*

Tight tolerance bearing with carbon/chrome balls providing good repeatability with long life

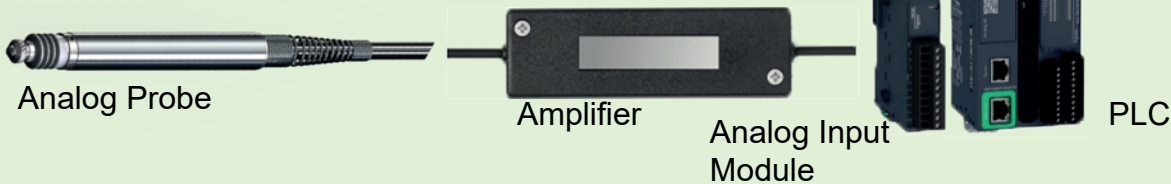
Titanium core carrier, inert and able to withstand lateral shock



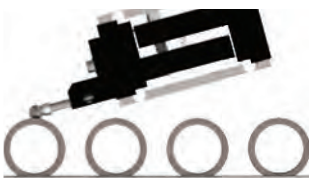
Anti rotation device designed to be strong and provide great repeatability even with probe tip off centre

All standard transducer cables feature a polyurethane sheath with a foil screen layer for excellent electrical screening. The cable is very flexible.

**Conventional Solution**



Compromising:  
 ✓ Accuracy  
 ✓ Repeatability  
 ✓ Resolution



Bearing diameter



PCB



Shaft straightness



Internal diameter



Surface profile



Screw height





**Orbit® ACS - Automation and Control System**

Orbit ACS

Go / No Go / Limit

**Modbus**

- Support all Solartron Digital Probe
- DC24V Power
- Din Rail mounting
- Programmable discrete I/O (4 inputs, 3 outputs)



1ch



2ch



4ch

**Orbit Modules & Gateways - Modbus RTU, ProfiNet, EtherNet/IP, EtherCat & CC-Link**

PLC



PLC



CC-Link

- Support all Solartron Digital Probe
- DC24V Power
- Din Rail mounting
- Support 150 Orbit Modules
- Cyclic and Explicit Data



**Orbit Digital Measurement Network**

PC



- Support all Solartron Digital Probe
- Support 150 Orbit Modules
- Interface to 3rd party sensors
- High speed measurements
- Din Rail mounting
- Cyclic and explicit data
- Interfaces to Excel®
- Orbit® Library – based on Microsoft .NET Framework
- Windows® 10, 8.1, 7 and XP in both 64 bit and 32 bit



USB



Ethernet



Bluetooth



RS232



Modbus RTU

**Orbit Digital Display Meter**

Stand-alone



**SI1500**

- Support all Solartron Digital Probe
- Support 1 Orbit



**SI3500**

- Support all Solartron Digital Probe
- Support 2 Orbit Modules



**SI5500**

- Support all Solartron Digital Probe
- Support 31 Orbit Modules



**WiGauge 2**

- With LCD readout
- Bluetooth capable
- <0.1 μm resolution
- Display tolerances on the screen



Your competent partner for Standalone data logger,..  
Industry 4.0/Internet of Things



	Expert Logger	Expert Key	Loggito Logger	Loggito USB	Loggito Wireless	Loggito Gateway
<b>Universal Analog Inputs</b>						
Voltage (Strain Gauge Excitation)	±156 mV ~ ±10 V	± 100 / 200 / 500 mV; ± 1 / 2 / 5 / 10 V	±78 mV ~ ±10 V		—	
Current	0~20 mA, 4~20 mA		0~20 mA / 4~20 mA / ±20 mA		—	
Resistance (Current reference)	0~10 kΩ (100 / 200µA / 1mA)	0~10 kΩ (200µA)	0~60 kΩ		—	
Temperature(TC, RTD)	B, C, E, J, K, L, N, R, S, T, PT100, PT1000, NTC	R, K, J, E, PT100, PT1000	J, K, B, N, S PT100, PT1000		—	
Analog Outputs	0~12 V / ±12V / 0~20 mA / 4~20 mA 16bits	0~10 V / ± 10 V / 0~20 mA / 4~20 mA / ±20 mA 16bits / 50Hz	4~20 mA / 12bits / 1Hz		—	
High Frequency Digital Inputs	50Vdc / 3.5mA / 1 MHz / 64 bits	90Vdc / 3.5mA / 1 MHz / 64 bits	100Vdc / 3.5mA 30KHz / 64 bits		—	
Digital Output	50 Vdc / 3A / 10 KHz	30 Vdc / 1A / 10Hz	50 Vdc / 250mA / 10 kHz		—	
Input Resolution	24 Bit	18 Bit	24 Bit		—	
Sum sampling rate	1KHz	100 KHz	1/3 Hz~680 Hz		—	
Galvanic isolation	±400 VDC	500 VDC	±400 VDC		—	
Data Memory - Internal (30 million values per GB)	2~14 GB	—	4 / 8 /16 GB	—	—	4 / 8 /16 GB
- External (Backup)	USB, NFS, CIFS, (S)FTP	—	USB, NFS, CIFS, (S)FTP	—	—	USB, NFS, CIFS, (S)FTP
<b>Communication</b>						
Data Service Configurator	LAN / USB / WLAN	LAN / USB	LAN / USB	USB	WLAN	LAN / USB
LAN	✓	✓	✓	—	—	✓
USB Device 2.0	—	—	—	✓	—	—
USB Host 2.0	✓	—	✓	—	—	✓
CANbus 2.0	2	—	—	—	—	—
RS232/485	3	—	via USB extension	—	—	via USB extension
Modbus TCP	✓	—	✓	—	—	✓
Modbus RTU	✓	—	✓	—	—	✓
OPC UA	✓	—	✓	—	—	✓
OPC DA	—	—	✓	—	—	✓
Sensor bus SDI12	✓	—	—	—	—	—
Power Supply	12~24Vdc	9~24Vdc	12~24Vdc 5Vdc (USB mini) Battery 3.7V, 2Ah	5Vdc (USB mini)	12~24Vdc Battery 3.7V, 2Ah	12~24Vdc 5Vdc (USB mini) Battery 3.7V, 2Ah

\*For more information, please log on to <http://www.scigate.com.sg>



Your competent partner for measurement systems ranging from standard through to customised complete solutions!

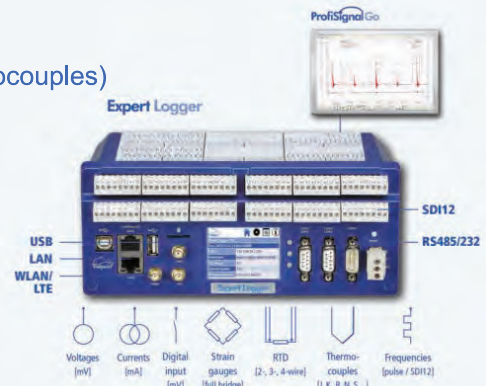


Stand alone and secure data logger!

- Work standalone without computer
- Strong networking capability, remote & wireless viewing
- Universal inputs suitable for any type of sensor (e.g. mA, mV, RTD, thermocouples)
- Quality & high speed input (24 Bits ADC & 1KHz Sampling)

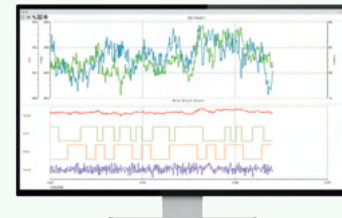
Applications:-

- Traffic census data loggers
- Solar panel data loggers
- Aircraft data loggers
- Temperature data loggers
- Meteorological data loggers
- High-speed data loggers



Monitoring and fault analysis!

- Synchronous acquisition of high-speed analog and digital signals
- Condition monitoring and fault diagnostics within a single device
- No requirement for an on-site PC and easy data read-outs using a USB stick
- Flexible data transmission via Ethernet, USB, Serial and WLAN
- Fast and easy data evaluation using logic analyses and trends



## Message Series



Applications:-

- Fault analysis in industrial cranes
- Monitoring of wear in crane systems
- Development of crane maintenance-plans using data analysis
- Monitoring of system symmetries
- Monitoring crane travel and range distances
- Error detection in control and power components
- Maintenance planning for container cranes

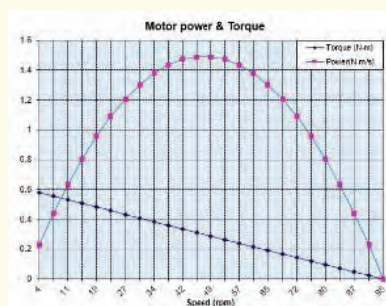


Precision measurement!

- Easy-to-use, automated testing procedures
- Test sample conditioning management, voltage supply, frequency converters and switch matrixes
- Time-synchronised temperatures, pressures, rotations, electrical measurements and torques
- Precision electrical measurement via power measurement units
- Monitoring of threshold values online during the testing procedure

Applications:-

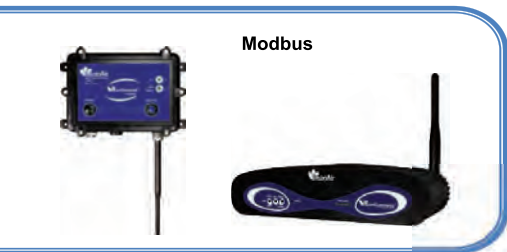
- Cold resistance measurement and extrapolation of winding resistances
- Non-load & rated load testing
- Load curves testing
- Overload trials & locked rotor testing
- Torque-speed characteristic curve
- Testing of voltage series
- Determination of efficiency
- Heat testing



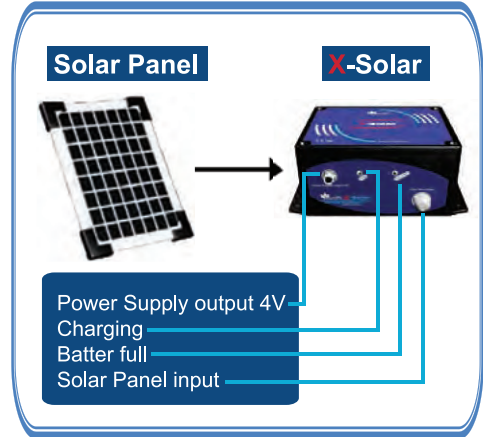




The BeanScope® is a real time WSN supervision and control monitor. It allows the users to monitor and operate in real time BeanAir® WSN. The BeanScope® is also equipped with a smart expert system that allows users to interpret elements such as data acquisition or alarms related to the sensor network.



<p><b>SmartSensor</b></p> <ul style="list-style-type: none"> <li>AX 3D Accelerometer</li> <li>Hi-Inc Tiltmeter</li> <li>AX 3DS Shock Sensor</li> <li>Low Cost Tiltmeter</li> <li>AX 3D Xrange High Performance Accelerometer</li> <li>Hi-Inc Xrange High Performance Tiltmeter</li> </ul>	<p><b>ProcessSensor</b></p> <ul style="list-style-type: none"> <li>AN 420 Analog Current Loop (4-20mA)</li> <li>AN V Analog Voltage (+/- 0V or +/- 10V)</li> <li>AN mV Analog Voltage (+/- 20mV)</li> </ul>	<p><b>EcoSensor</b></p> <ul style="list-style-type: none"> <li>One Tir IR Temperature</li> <li>One T Temperature</li> <li>One TH Temperature and Humidity</li> </ul>
---	---	--







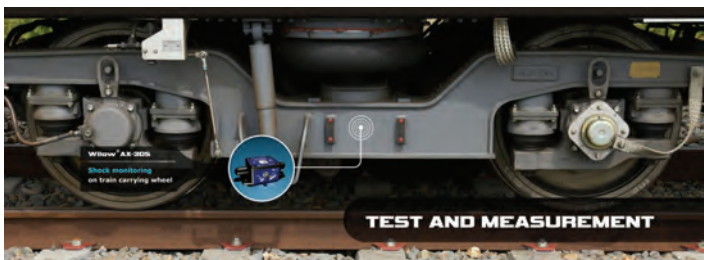
**AX-3D**  
Ultra Low Power  
Wifi Accelerometer with  
built-in data logger

**AX-3DS**  
Ultra Low Power  
Wifi Shock Sensor with  
built-in data logger

**Hi-Inc**  
Ultra Low Power  
Wifi Accelerometer with  
built-in data logger

**X-Inc**  
Ultra Low Power  
Wifi Combo Sensors (accelerometer,  
inclinometer and shock) with built-in  
data logger

- ULP (Ultra Low Power)  
Wifi Technology - IEEE 802.11 b/g/n  
(2.4 Ghz frequency band)
  - Rugged aluminum casing  
Waterproof IP67 | NEMA 6
  - Embedded Data Logger:  
up to 5 million data points (with events  
dating)
  - USB 2.0 for device configuration  
(including firmware update)
  - Smart and flexible power supply,  
compatible with USB and Solar power  
sources
  - Store and Forward+:  
Lossless data transmission with hard  
real-time
  - SSD (Smart Shock Detection),  
WILOW® sensor can wakeup on  
shock detection (software configurable)
  - IIOT Ready: Integrated MQTT data  
exchange, lightweight and open-source  
Industrial Internet of Things (IIOT)  
protocol
  - Industrial temperature range  
-40°C to +65°C
  - Onboard SNTP (Simple Net Time  
Protocol) Client
  - Precision Time Protocol  
over Wifi Network (±30ms of precision)
- DIN 4150-3  
Standard thru FFT**



Environmental  
Monitoring

Condition  
Monitoring

Ground Vibration  
Monitoring





wRemote is a new concept of Wireless Telemetry, based on mesh networking technology. The system was designed for industrial and open field network, where you need to collect remote and disperse information in a reliable and low cost networking solution.

**2.4GHz Telemetry** • ZigBee Wireless Telemetry

**wRemote**

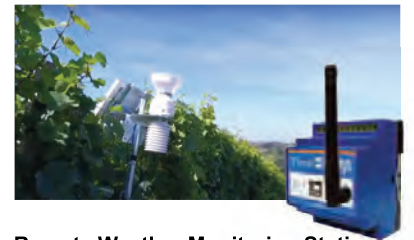
ZigBee Wireless Telemetry System  
2.4GHz



**Industrial**  
Connectivity of the control panels of wind turbines through fiber optic rings.



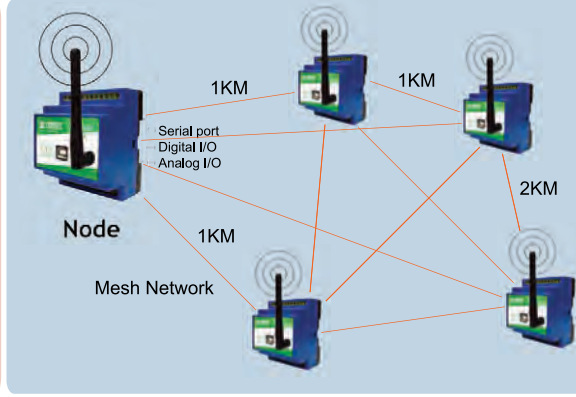
**Water and Sanitation**  
Wireless acquisition of basic variables measurement from the injection of current rectifiers for the cathodic protection of pipelines.



**Remote Weather Monitoring Station**  
Wireless acquisition of environmental data, temperature, raindrop and particulate counter.



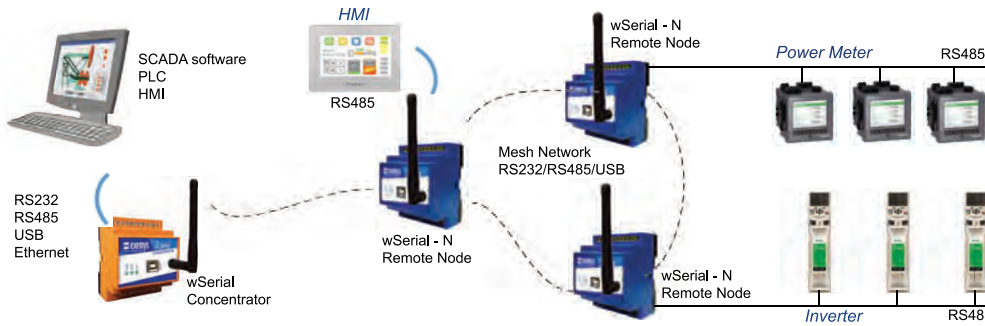
**Remote Tank Farm Level Monitoring**  
Inventory monitoring and control wirelessly.



**Advantages of Mesh Network**

- It is possible to carry messages from one node to another by different paths.
- Each node has its own communications with the others.
- Each node extends the scope of communications.
- It is much safer. If a node fails, another will take over the traffic.

**Wireless Radio 2.4GHz Mesh Network Technology wSerial**

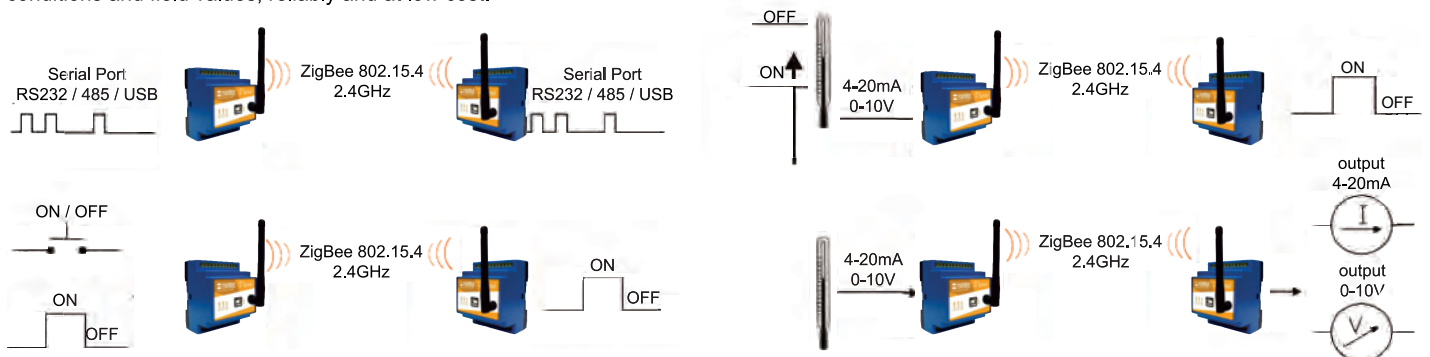


wSerial is a new concept in Serial Radio, which introduces Mesh Networks technology to achieve not only point to point, but also multiple connections. The system was designed to be a real network of serial ports to industrial facilities where there is a need to gather information from remote and dispersed devices, reliably and inexpensively.

**Wireless Radio 2.4GHz Mesh Network Technology wTunnel**

**wTunnel**

The system was designed to be a true Point to Point Tunnel to reflect conditions and field values, reliably and at low cost.



\*For more information, please log on to <http://www.scigate.com.sg>



## Telemetry Device with 4G + 3G Cellular / Satellite Communication and Programmable Logic

### GRD

Device for monitoring and controlling with 3G Cellular/Satellite communication and Programmable Logic



The GRD family of products helps control and supervise any kind of equipment from a distance, be it a control system or process system facilitating and implementation of the remote telemetry system. Additionally it includes the possibility to load test script to perform internal logic



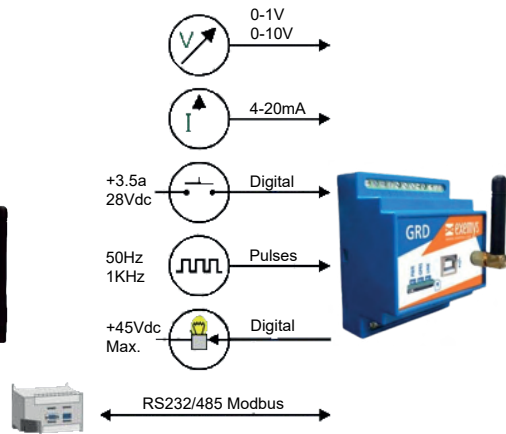
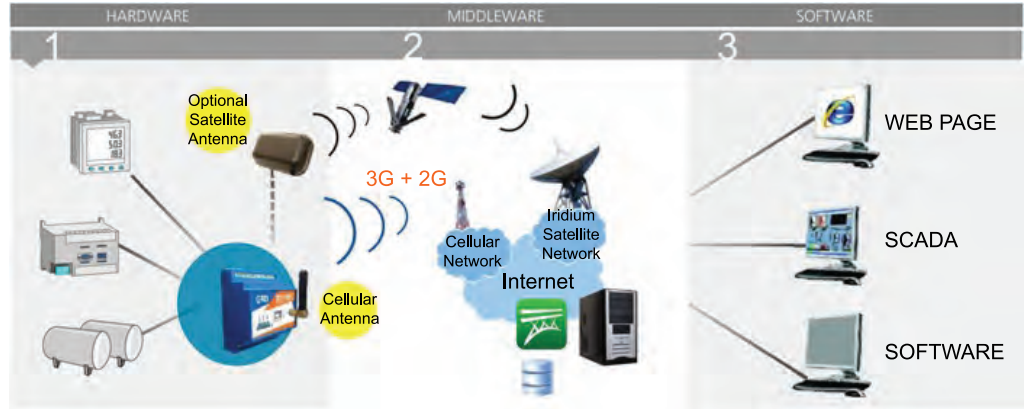
### Electric Power

Remote monitoring and control of large size generations.

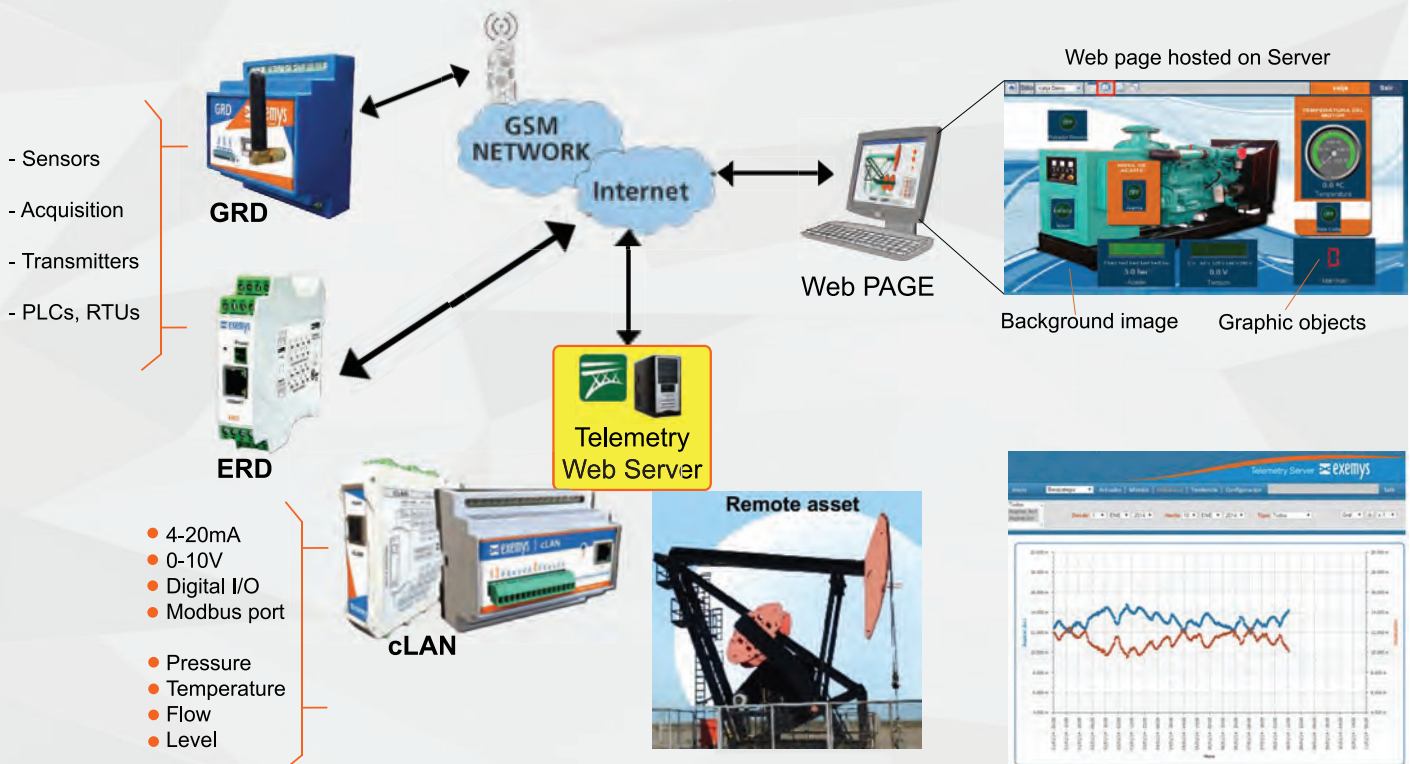


### Oil and Gas

The gas compressors in the wellhead installed and dispersed in remote sites. The telesupervision of the functioning compressors permits improved performance of the machine, increasing its productivity.



## Telemetry Web Server

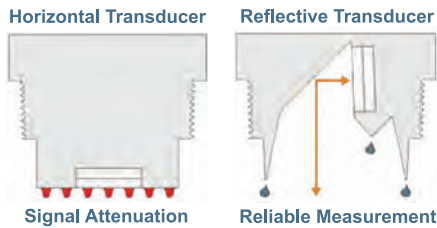






## Reflective Technology™

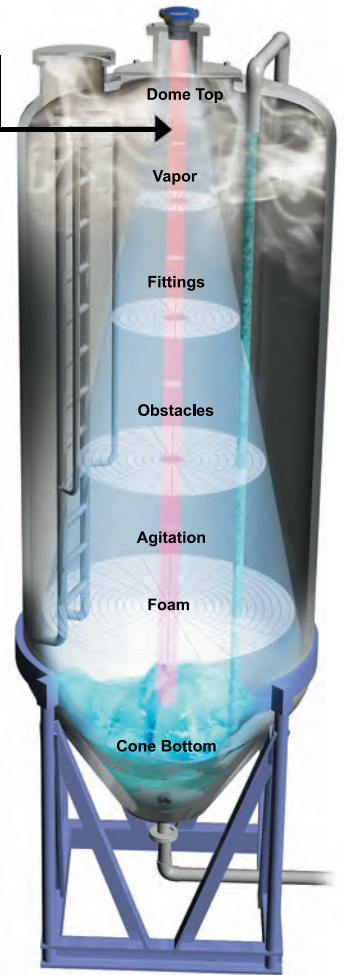
Condensation is the most common variable in liquid level applications. Condensation attenuates the acoustic signal of ultrasonic sensors with horizontal transducers, weakening their signal strength and signal to noise ratio by up to 50% and substantially reducing their measurement reliability. At the core of Reflective Technology™ is a simple fact. Unlike flat horizontal surfaces, significant water droplets cannot adhere to smooth vertical surfaces. By orienting the transducer vertically, condensation runs off the transducer and does not affect sensor performance. The unimpeded transmit and receive signals are redirected to and from the liquid off a 45° reflector, delivering reliable level measurement.



## DSP Technology

Flowline ultrasonic level sensors feature our patented digital signal processing technology that delivers the Flowline advantage, accurate and reliable, non-contact measurement of chemical, oil, water and wastewater from 0.25m-10m. This adaptive technology creates a living map of your tank process and continuously optimizes sensor power, obstacle recognition, signal output filtering, environmental noise rejection and fail-safe diagnostics.

**Beam Width (RED)**  
This intelligent sensor is taking measurement based on a 3" (7.6cm) invisible beam width, it enable the sensor to works in narrow restricted space that where never available before by any other ultrasonic transmitters.



### Reflective Ultrasonic

<b>UG01-03</b>	<b>UG06-12</b>	<b>US01-03</b>	<b>US06-12</b>
<b>Application</b>	Chemical feed, skid/machine, cooling tower, IBC/drum, mini bulk, day tank, waste sump	Bulk storage, day tank, waste sump, clarifier, neutralization	Chemical feed, skid/machine, cooling tower, IBC/drum, mini bulk, day tank, waste sump
<b>Classification</b>	General Purpose		Intrinsically Safe
<b>Measuring Range</b>	1.5m and 3.0m	6.0m and 12.0m	1.5m and 3.0m
<b>Output</b>	4-20 mA + (4) SPST relays	4-20 mA	4-20 mA
<b>Transducer Type</b>	Reflective Technology™		
<b>Transducer Material</b>	PVDF		
<b>Configuration</b>	WebCal Software	Push-Button + WebCal Software	Push-Button + WebCal Software + HART

### General Purpose Ultrasonic

### Explosion-Proof

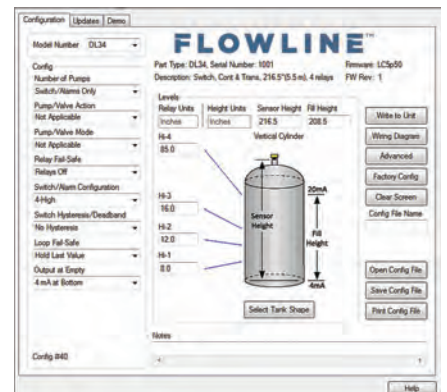
### Guided Wave Radar

<b>DL14</b>	<b>DL24</b>	<b>LU2x</b>	<b>LU8x</b>	<b>XP88</b>
1.25m	3.0m	10.0m	10.0m	8.0m

### Instruments

<b>LI40</b>	<b>LI25-2</b>	<b>LI55</b>	<b>LM92</b>

<b>LG10-0</b>	<b>LG10-1</b>	<b>LG10-2</b>
Rod	Coaxial	Cable







### Pulse Radar

	<b>LR10</b>	<b>LR15</b>	<b>LR20</b>	<b>LR25</b>	<b>LR30</b>
<b>Application</b>	Storage	Storage	Storage	Process	Lift Station
<b>Classification</b>	General Purpose				
<b>Measuring Range</b>	10m	30m	20m	35m	30m
<b>Output</b>	4-20 mA				
<b>Antenna Material</b>	PTFE	316L	316L & PTFE		Nylon
<b>Configuration</b>	Push-Button				

#### Intrinsically Safe Version

<b>LR11</b>	<b>LR16</b>	<b>LR21</b>	<b>LR26</b>	<b>LR31</b>
EchoPro Liquid Level Transmitter	EchoPro Liquid Level Transmitter	EchoPro Liquid Level Transmitter	EchoPro Liquid Level Transmitter	EchoPro Liquid Level Transmitter

#### Level Switch Monitoring

<b>AXXX</b>	<b>AX23</b>	<b>AX1X</b>	<b>AX13</b>
Smart-Trak Multi-Point Adjustable Switching position (Max 4), up to 3m height, PP material, 2" NPT or G thread process mounting.		Switch-Pak Single-Point Level Switch, up to 3m height, PVC, PP & PVDF material, 2" NPT or G thread process mounting.	

#### Liquid Level Switch

<b>LU10</b>	<b>LZ12</b>	<b>LV10</b>	<b>LO10</b>	<b>LP16</b>
Ultrasonic Switch	Turning Fork Switch	Vertical Float Switch	Optic Leak Switch	Capacitance Switch

### WebCal® Configuration Software

Best for FAST and EASY Level Sensor Setup







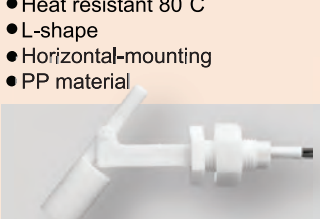

### Mounting Accessories






\*For more information, please log on to <http://www.scigate.com.sg>








## Level Switches

<p><b>Diaphragm Switch</b> KF-500</p>	<p><b>Vertical Float Switch</b> KF-300</p>	<p><b>Electrode Level Switch</b> KF-600</p>	<p><b>Cable Float Switch</b> KARI</p>
 <ul style="list-style-type: none"> <li>• Detect pressure change</li> <li>• No power source</li> <li>• Viscous liquids</li> <li>• Corrosive liquids</li> <li>• High-temperature 150°C</li> <li>• No moving part</li> </ul>	 <ul style="list-style-type: none"> <li>• Corrosion resistant</li> <li>• Max pressure 460KPa</li> <li>• Max temperature 100°C</li> <li>• Specific gravity &gt;0.63</li> <li>• Moisture, gas, dust</li> <li>• Explosion-proof</li> </ul>	 <ul style="list-style-type: none"> <li>• For conductive liquid</li> <li>• Electrode Ø6, 8, 10, 12, 15, 20</li> <li>• Up to 9 electrode</li> <li>• Electrode material SUS</li> <li>• Titanium, Hastelloy</li> </ul>	 <ul style="list-style-type: none"> <li>• Specific gravity &gt;0.8</li> <li>• Single and multi-points</li> <li>• Viscous liquids</li> <li>• Scum is surely detected</li> </ul>
<p><b>SUS Float Switch</b> RFS-6</p>	<p><b>Small Float Switch</b> MFS17-C</p>	<p><b>Small Float Switch</b> MFS9-N1</p>	<p><b>Horizontal Float Switch</b> KF-200</p>
 <ul style="list-style-type: none"> <li>• Corrosion resistant</li> <li>• Max pressure 1MPa</li> <li>• Max temperature 200°C</li> <li>• Specific gravity &gt;0.65</li> <li>• Moisture, gas, dust</li> <li>• Explosion-proof</li> </ul>	 <ul style="list-style-type: none"> <li>• Heat resistant 80°C</li> <li>• Vertical-mounting</li> <li>• PP material</li> </ul>	 <ul style="list-style-type: none"> <li>• Heat resistant 80°C</li> <li>• L-shape</li> <li>• Horizontal-mounting</li> <li>• PP material</li> </ul>	 <ul style="list-style-type: none"> <li>• No power source needed!</li> <li>• High temperature 250°C</li> <li>• Specific gravity &gt;0.83</li> <li>• Explosion-proof</li> </ul>

## Level Transmitters for Liquid and Powder

 <p><b>Capacitance Level Transmitter</b> KLI / KLT / KLG</p> <ul style="list-style-type: none"> <li>• No moving parts</li> <li>• All conductive media</li> <li>• Corrosion resistant</li> <li>• Max Length 50M</li> <li>• Max Pressure 10 bar</li> <li>• Max Temperature -200~500°C</li> <li>• Explosion-proof</li> <li>• Liquid &amp; Powder</li> </ul>	 <p><b>Float Transmitter</b> KF-100</p> <ul style="list-style-type: none"> <li>• Specific gravity 0.5~1.0</li> <li>• Max pressure 4.9 Bar</li> <li>• Max temperature 100°C</li> <li>• Explosion-proof</li> <li>• SUS, PVC, Teflon</li> <li>• Liquid</li> </ul>	 <p><b>Sounding Bob Level Transmitter</b> KSL</p> <ul style="list-style-type: none"> <li>• Max length 40m</li> <li>• Max temperature 100°C</li> <li>• Explosion-proof</li> <li>• Suitable for powder</li> </ul>
---	---	--

## Level / Flow Switch for Powder/Granules

<p><b>Vibration Level Switch</b> KVX</p>  <ul style="list-style-type: none"> <li>• Specific gravity &gt;0.03</li> <li>• No moving parts</li> <li>• Corrosion resistant</li> <li>• Max length 6m</li> <li>• Max pressure 10 bar</li> <li>• Max temperature -25~150°C</li> <li>• Explosion-proof</li> <li>• Powder</li> </ul>	<p><b>Rotary Paddle Level Switch</b> LS</p>  <ul style="list-style-type: none"> <li>• Specific gravity &gt;0.83</li> <li>• Max length 300mm</li> <li>• Max pressure 10 bar</li> <li>• Max temperature 120°C</li> <li>• Powder</li> </ul>	<p><b>Capacitance Level Switch</b> ALN / SL</p>  <ul style="list-style-type: none"> <li>• No moving parts</li> <li>• All conductive media</li> <li>• Corrosion resistant</li> <li>• Max length 2m</li> <li>• Max pressure 10 bar</li> <li>• Max temperature -25~80°C</li> <li>• Explosion-proof</li> <li>• Liquid and powder</li> <li>• Teflon coating</li> <li>• Wire electrode</li> </ul>	<p><b>Microwave Level Switch</b> MWS2</p>  <ul style="list-style-type: none"> <li>• No moving parts</li> <li>• Corrosion resistant</li> <li>• Max distance 35m</li> <li>• Max temperature -20~900°C</li> <li>• Powder</li> </ul>	<p><b>Microwave Flow Switch</b> KFD-1</p>  <ul style="list-style-type: none"> <li>• No moving parts</li> <li>• Corrosion resistant</li> <li>• Max distance 1.5m</li> <li>• Max temperature -10~80°C</li> <li>• Powder</li> </ul>
--	---	--	---	---

\*For more information, please log on to <http://www.scigate.com.sg>





The STS strengths are:

- Available in standard and customized solutions
- High quality and durable products
- Accurate, reliable and long term consistent quality due to in house produced transducer
- Country of origin - Switzerland



Machine and Plant Construction



Oil and Subsea



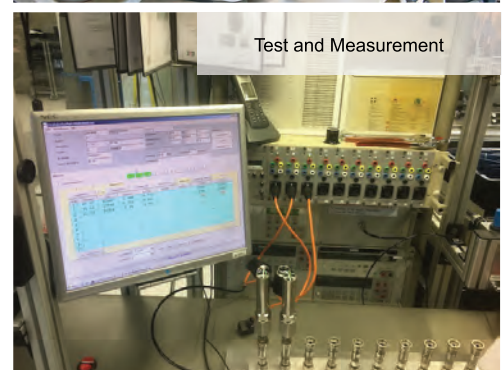
Water and Shipbuilding



Water Treatment



Desalination



Test and Measurement



Type	Pressure Transmitter	Hydrostatic Pressure Transmitter
Pressure Range Unit: Bar, mWC, PSI	0 ... 100 mbar -1 ... 1000 bar	0 ... 100 mbar -1 ... 1000 bar
Description	Electronics packed in gel Lightning Surge Protection Special Oil Filling: ASEOL food, Halocarbon Combined Pressure and Temperature version	
	17.5mm body diameter	10mm & 19mm body diameter SDI-12 Protocol Ballast weight
Pressure Type	Gauge, Absolute(Vacuum), Sealed Gauge(>25Bar)	Gauge, Absolute
Accuracy	± 0.05/0.1/0.25/0.5/1.0/2.0% FS	
Process Connection	1/4" NPT M, 1/2" NPT M, G 1/4" M, G 1/2" M, G 1/4" M Gauge Din 16288, G 1/2" M Gauge Din 16288, G 1/2" M frontal diaphragm, G 1/2" M flush diaphragm	Open / Closed G 1/4" M, G 1/2" M
Output Signal	4~20mA, 0~20mA, 0~10V, 0~5V, mV, RS485 Modbus RTU, Surge Protection (Opt)	
Electrical Connection	Cable Gland, DIN, Binder, MIL	
Cable Material	PUR, PE, FEP	
Housing Material	SUS316L, Titanium, Hastelloy, Inconel, PVDF jacket	
Process Temperature	-40~150°C	-5~80°C
Approval	ATEX, IEC Ex, FM, FMC+, GL, GOST, RTN	
Sealing	Viton, EPDM, Kalrez	





# TERRANOVA®

WE DO PROCESS INSTRUMENTATION PRECISELY



**SPRIANO**  
SINCE 1923



**Valcom**  
SINCE 1974



**MEC-RELA**  
SINCE 1976



## The Terranova strengths are:

- Available in standard and customized solutions
- 50 years of innovation, quality and service on demand
- Serving food and beverage, chemical, pharmaceutical, cement, steel, marine, oil and gas industry
- Country of origin - Italy



**T7D** Smart Differential Pressure Transmitter



**T7N** Smart Pressure Transmitter



**T79** Smart Pressure Transmitter



**T7V** Digital Field Indicator



**ASL** Ultrasonic Level Switch



**SPG** Self Powered Gauges



**OMD** Bubbling System for Level Measurement



**OMD** Oil Mist Detector



### WATER & WASTEWATER



### FOOD & BEVERAGES



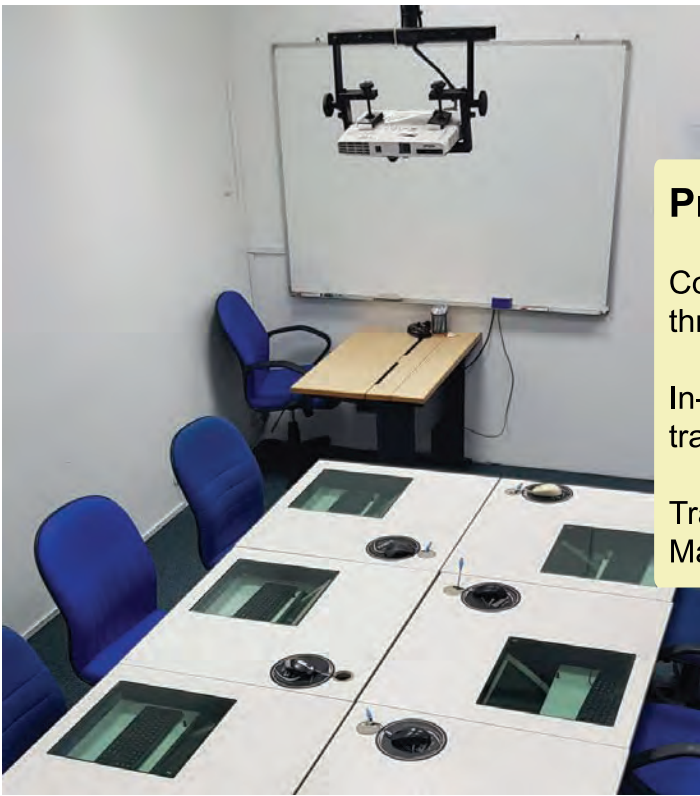
### CHEMICAL, PHARMACEUTICAL & STEEL PLANT



### STORAGE TANK







### **Product Training Facility**

Costs reduction and improved system designs through training

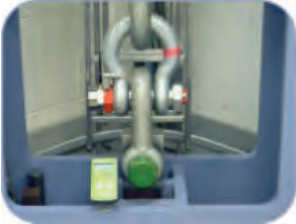
In-depth hands-on interaction with products in training class

Training available at training centers across Malaysia and Singapore



### **Factory Calibration Service**

To ensure sensor continuously performs to its specification, all new sensor are supplied with factory calibration and we also offer annual re-calibration service.



We offer full system calibration for sensors with digital displays, amplifiers, and/or USB Solutions and use calibration procedures in compliance with ISO 17025 standards.



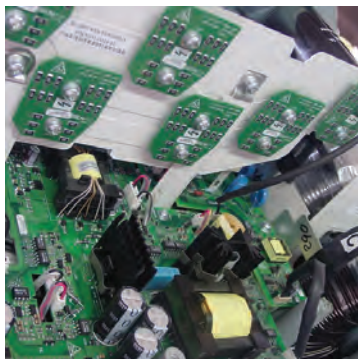
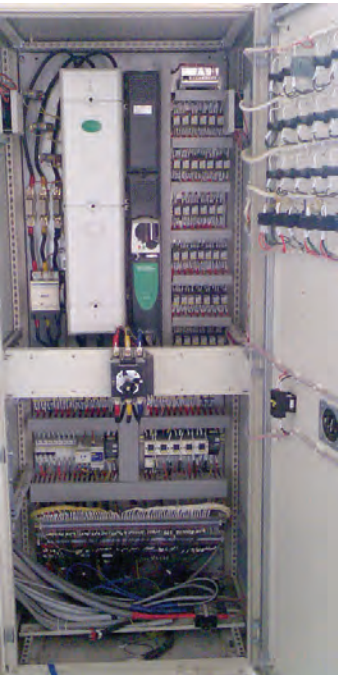
### **Product Repair and Service**

Provide local repairs and servicing for our customers

Help customers to reduce cost and machine down time

Works are carried out by trained and experienced technicians

Quick services and affordable price!







## OFFICE MAP AND ADDRESS

### SCIGATE AUTOMATION (S) PTE LTD

No.1 Bukit Batok Street 22 #01-01  
Singapore 659592  
Tel: (65) 65610488  
Fax: (65) 65620588  
Email: sales@scigate.com.sg



### SCIENGATE AUTOMATION (M) SDN BHD

14, 1st Floor, Tingkat Talang Satu,  
Taman Emas,  
13600 Prai, Pulau Pinang, Malaysia  
Tel: (60) 04 3997522  
Fax: (60) 04 3997509  
Email: info@scigate.com.my



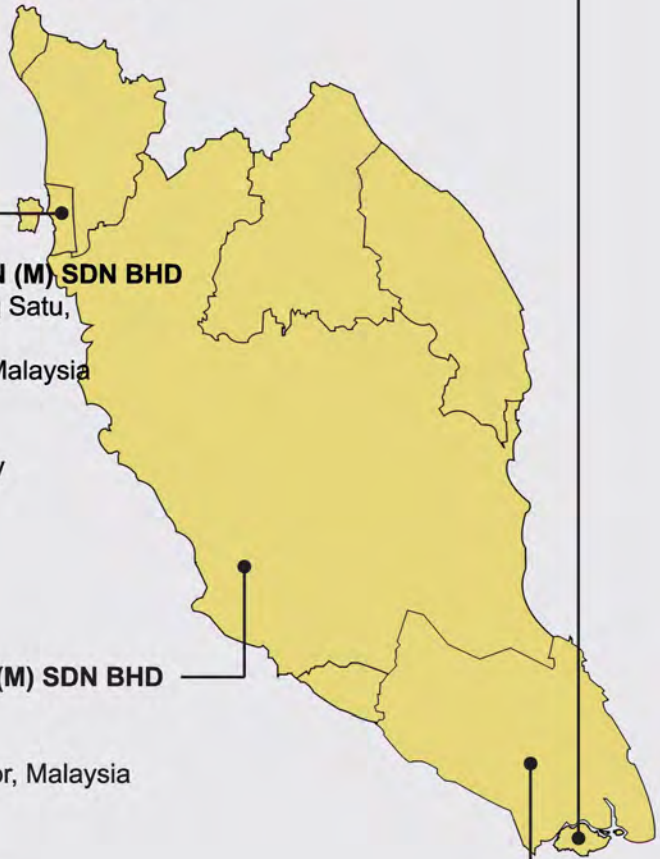
### SCIENGATE AUTOMATION (M) SDN BHD

17-3, Blk E1, Dataran Prima,  
Jalan Pju 1/42,  
47301 Petaling Jaya, Selangor, Malaysia  
Tel: (60) 03 78047522  
Fax: (60) 03 78047422  
Email: info@scigate.com.my



### SCIENGATE JB SDN BHD

No.72-01 Jalan Molek 1/28  
Taman Molek,  
81100 Johor Bahru, Malaysia  
Tel: (60) 07 3519806, 07 3578806  
Fax: (60) 07 3519807  
Email: sales@scigate.com.sg



Scigate Automation (S) Pte Ltd



@scigatepteltd



Scigate Automation (S) Pte Ltd



+65 8318 4938



SCIGATE - Your Automation Partner



<http://www.scigate.com.sg>