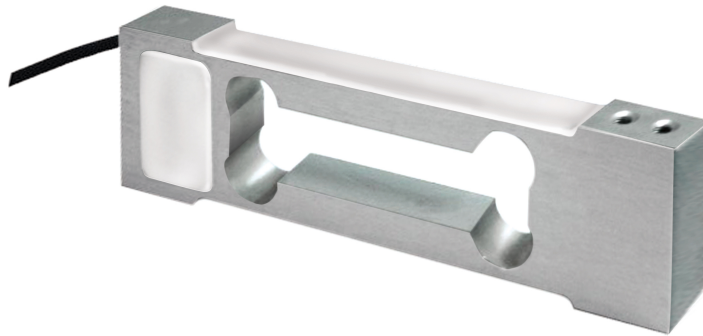


## General information

PWS25320220329

The PS014 off-center load cell (with degree of protection IP66) ensures high accuracy even with off-center loads and is normally used with filling scales and direct platforms up to 200 x 200 mm.



## Suggested related products

A highly performing weighing system must be accurate, perfectly calibrated and well maintained. In order to improve the load cell performance and to optimize its functioning, you may need the following products:

**Tester 1008** [TESTER 1008](#)

**Junction Box** [CGS4-C](#)

**Flow Regulator For Belt and loss in weight touch** [MC 353](#)

**Batching Tool** [MCT 1302 Batch](#)

All indicated data may be changed without notice.  
All the measures indicated are expressed in millimeters (mm).

**SCIGATE AUTOMATION (S) PTE LTD**

No.1 Bukit Batok Street 22 #01-01 Singapore 659592

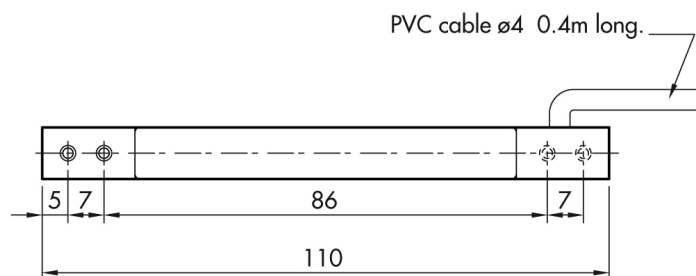
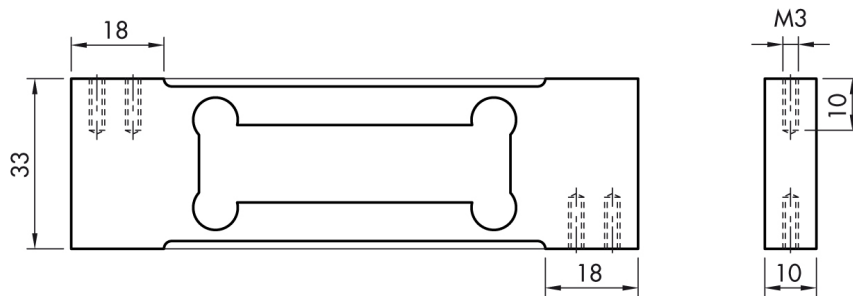
**Tel:** (65) 6561 0488**Fax:** (65) 6562 0588**Email:** [sales@scigate.com.sg](mailto:sales@scigate.com.sg)**Web:** [www.scigate.com.sg](http://www.scigate.com.sg)**Business Hours:** Monday - Friday 8.30am - 6.15pm

## Technical specifications

PWS25320220329

<b>Rated load (RL):</b>	0.3, 0.6, 1.2, 3 kg
<b>Combined error:</b>	< $\pm 0.017$ % RO
<b>Repeatability:</b>	< $\pm 0.01$ % RO
<b>Creep (30 minutes):</b>	< $\pm 0.016$ % RO
<b>Accuracy class:</b>	3000 OIML
<b>Deflection:</b>	0.3 - 0.5 mm
<b>Compensated Temperature:</b>	-10 $\div$ +40°C
<b>Temperature range:</b>	-20 $\div$ +70°C
<b>Temperature effect on zero balance:</b>	< $\pm 0.01$ % RO/5°K
<b>Temperature effect on output:</b>	< $\pm 0.006$ % RO/5°K
<b>Rated output RO:</b>	0.9 $\pm$ 0.2 mV/V
<b>Insulation resistance:</b>	> 5000 MOhm
<b>Input impedance:</b>	400 $\pm$ 20 Ohm
<b>Maximum input voltage:</b>	15 V
<b>Nominal input voltage:</b>	10 V
<b>Output impedance:</b>	350 $\pm$ 3 Ohm
<b>Degree of protection:</b>	IP66

All indicated data may be changed without notice.  
All the measures indicated are expressed in millimeters (mm).



All indicated data may be changed without notice.  
All the measures indicated are expressed in millimeters (mm).