



world leaders in the art of linear measurement

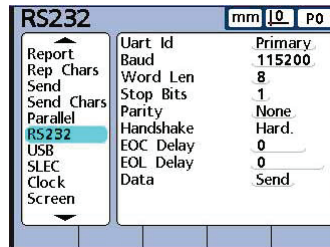
SI7500

Using a USB Flash-memory stick to store measurement data

Application Note
502862
Issue 1

Configuring the SI7500:

- ▶ Set the “Report” or “Send” parameters on the SI7500 as required (see the SI7500 User Manual 502823).

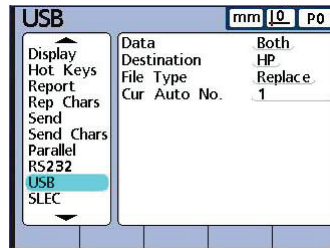


- ▶ Select the RS232 menu from the Setup menu.

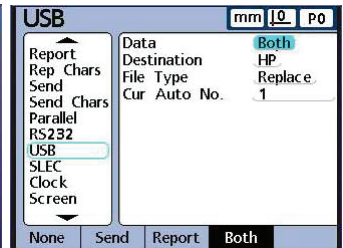
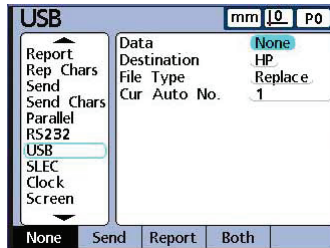
- ▶ Select the Data field and select “None” with the appropriate softkey.



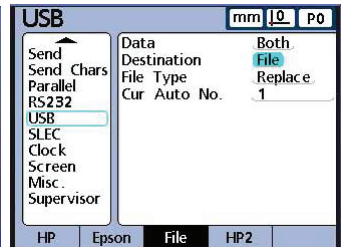
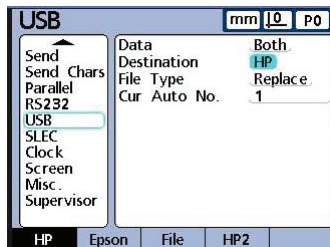
- ▶ Select the USB menu from the Setup menu.



- ▶ Select the Data field and select the desired option with the appropriate softkey. Note: “Both” will enable both Report and Send output types.



- ▶ Select the Destination field and select the “File” option to enabling saving of outputs (in Report or Send format) to the root directory of a connected USB key.



- ▶ When prompted, the SI7500 will now save any data outputs to the root directory of a connected USB flash memory stick.

Solartron pursues a policy of continuous development. Specifications in this document may therefore be changed without notice.