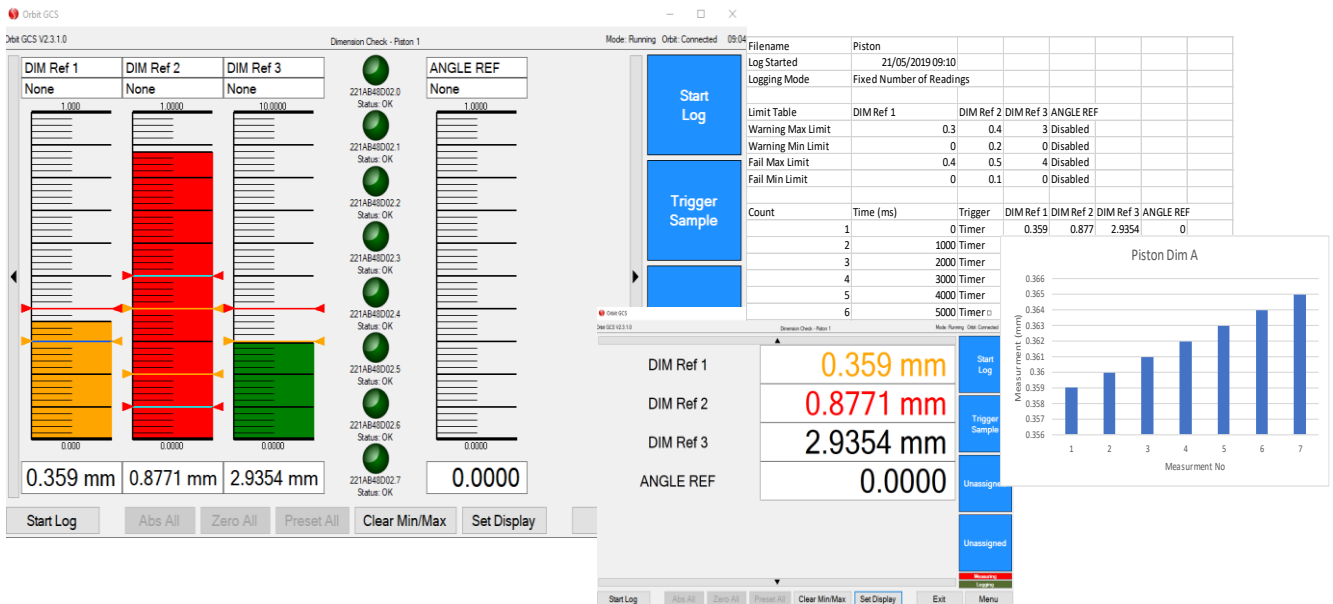


orbitGCS

Gauge Computer Software

Orbit GCS is an advanced gauging tool supplied either as software for computer installation, or pre-installed on an Industrial PC provided by Solartron Metrology. In conjunction with the Orbit® Measurement Network, it can be used to monitor inline and post process manufacturing dimensions and record measurement data.



Key features:

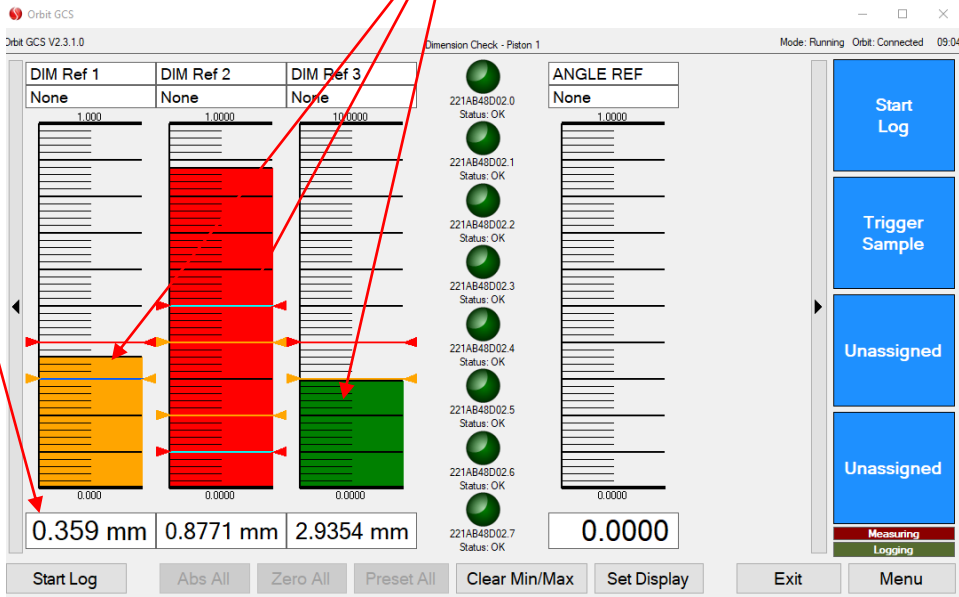
- Flexible and easy to use
- Simple installation onto any Windows 10 Computer
- Interface up to 150 Orbit® Digital Probes, which includes specialist transducers like Block Gauges, Flexures, Mini Probes, Laser, and Linear Encoder.
- Data from Solartron's Wireless Hand Tools can be drawn via the Wireless Communication Module (WCM)
- GCS will interface with 3rd party sensors via the Encoder Input Module, Analogue Input Module, Air Gauge Module
- Mathematical Formulae, both fixed and user programmable
- Logic functions with control of Input and Outputs via Solartron Digital Input Output Modules (DIOMs)
- Log Data to Microsoft Excel[®] formatted files for further processing
- Upgrade options for Complex Formulas, Mastering and Statistical Process Control (SPC)

Multiple Display Options

Dimension (with analogue bar and DRO)

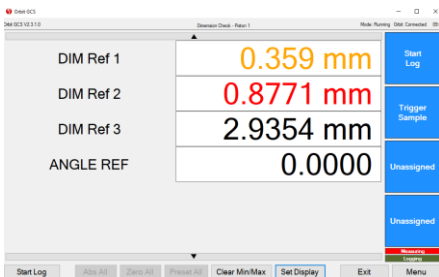
Status Indications
(E.g. In or Out of limit)

Programmable Buttons

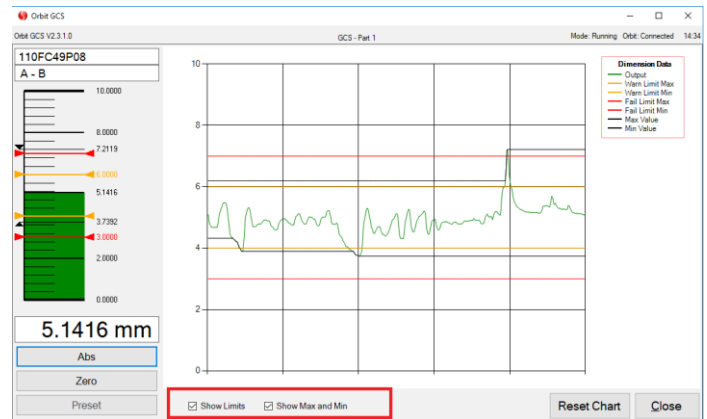


Fixed Control Buttons

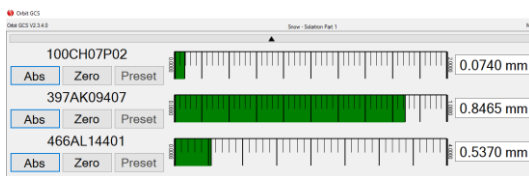
DRO Display Option



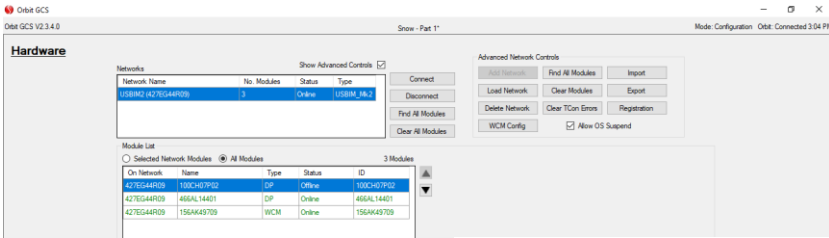
Detail screen for viewing data trends



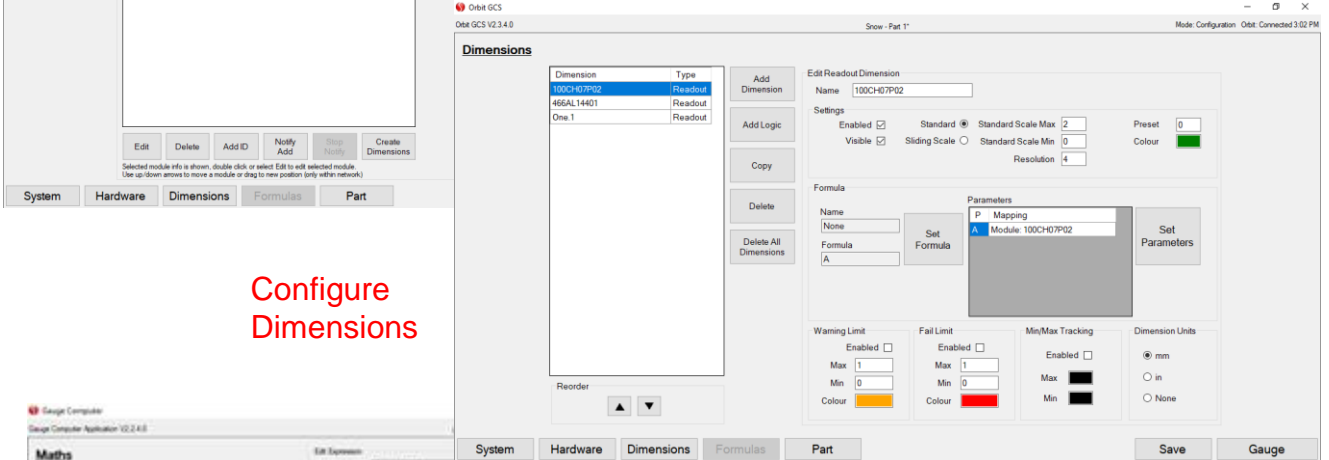
Horizontal Display Option



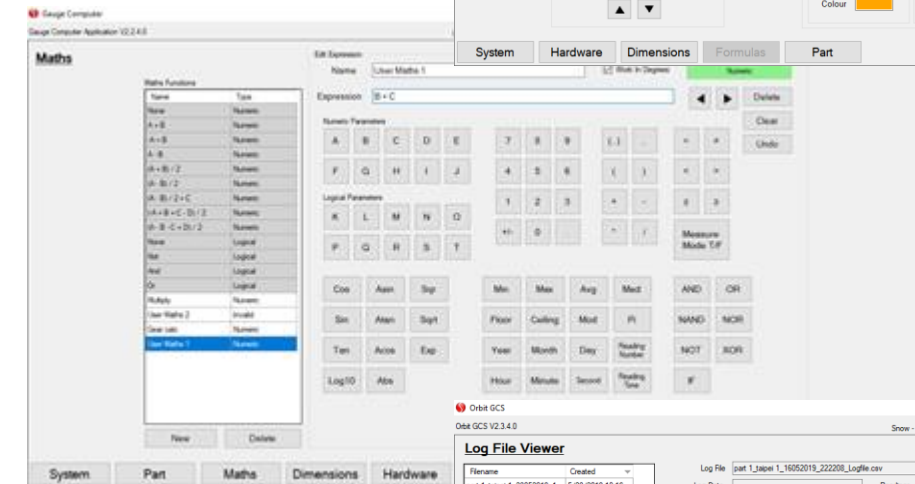
Simple Set Up Screens



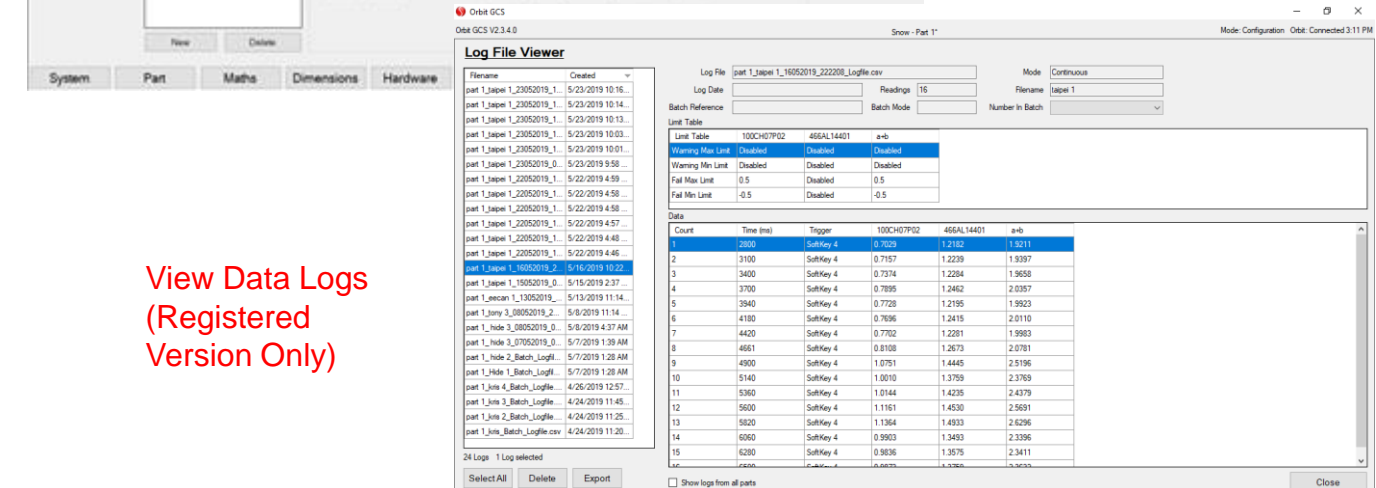
Configure Orbit Hardware



Configure Dimensions

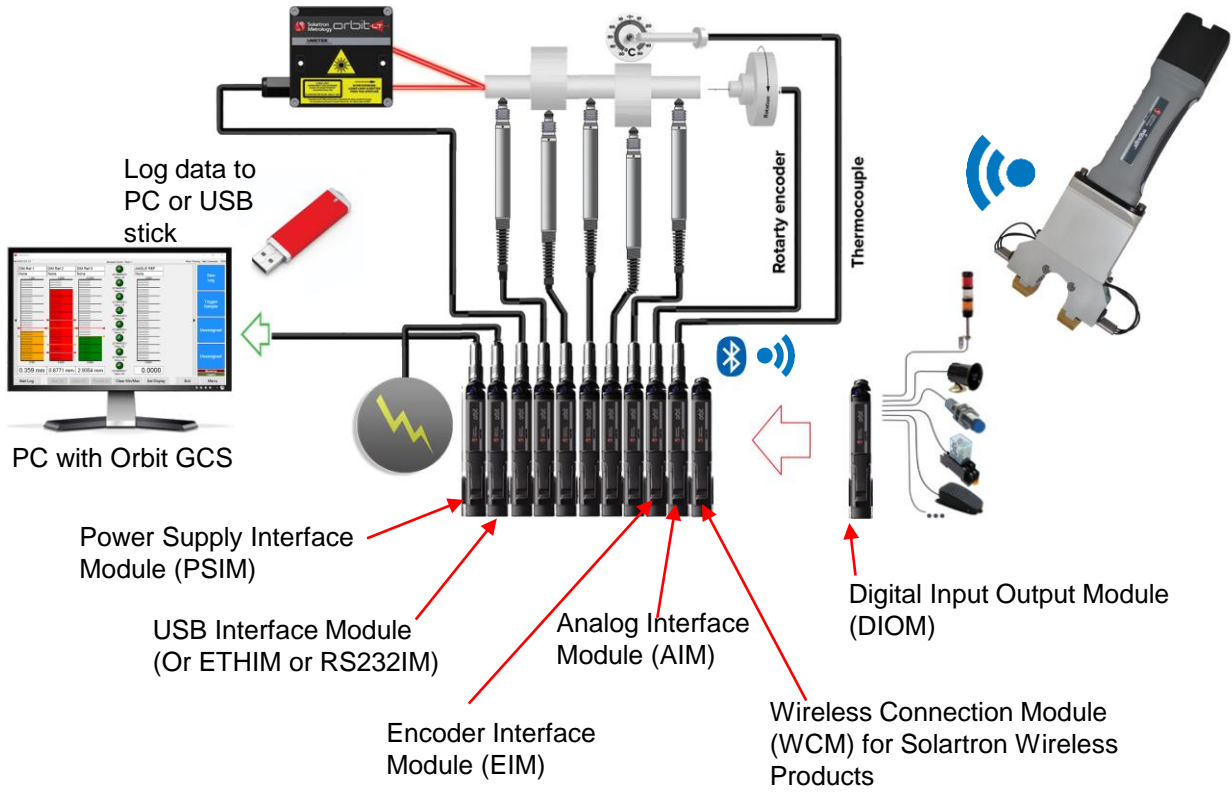


Generate Custom Formulas (Upgrade Package Option)

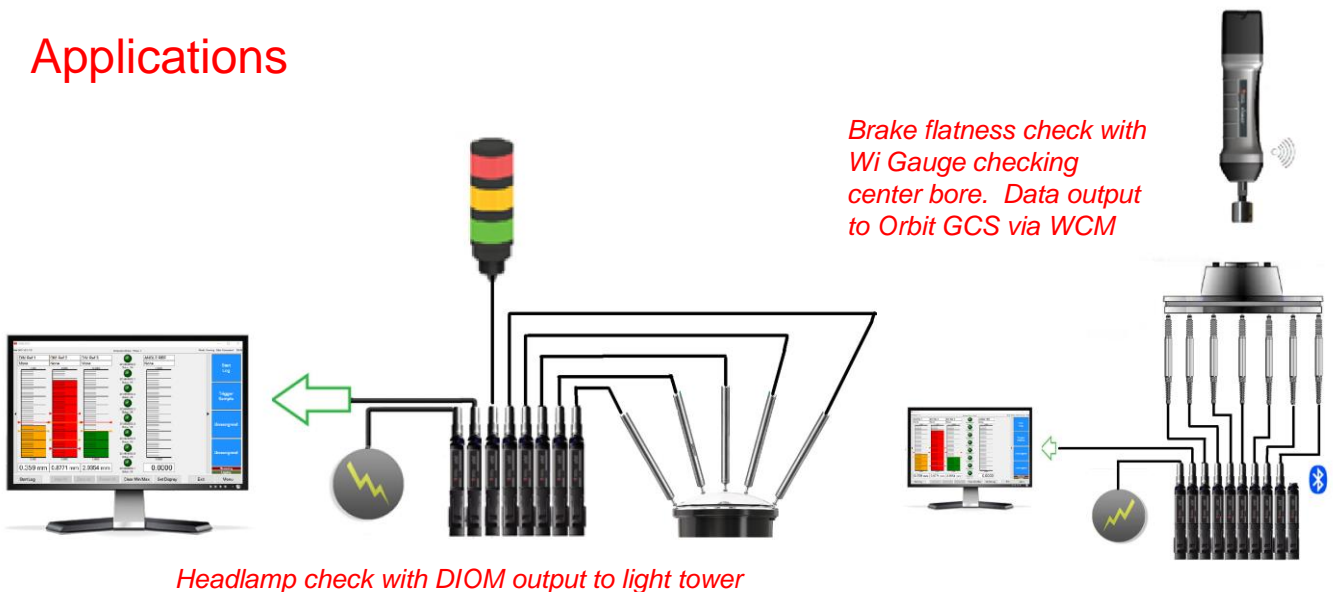


View Data Logs (Registered Version Only)

Full Orbit[®] Connectivity



Applications

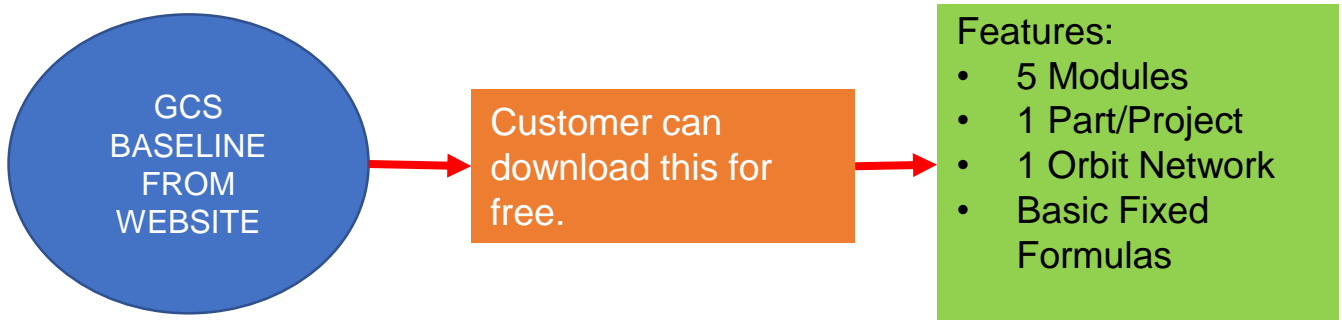


For a full description of the Orbit GCS please refer to the Orbit GCS Manual Number 503585 available on the Solartron Website. ([Link Here](#))

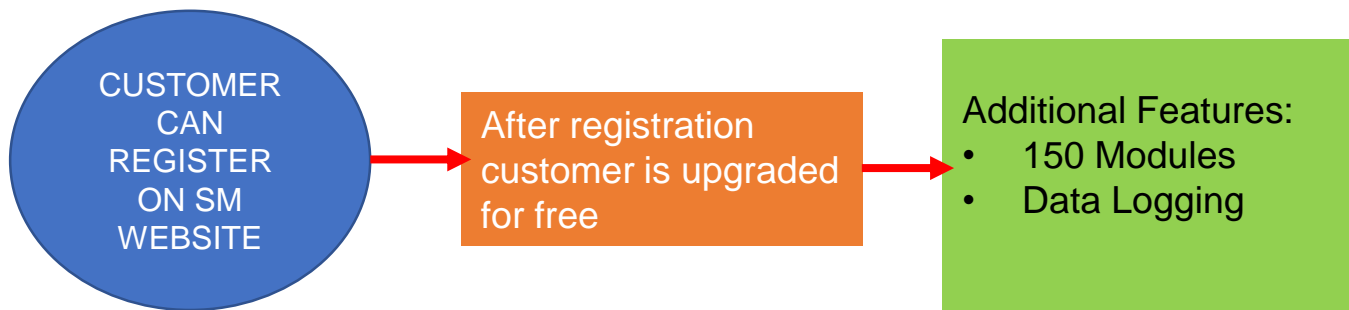
Orbit GCS Software Levels

The Orbit GCS can be downloaded from the Solartron Website – please visit [Link](#)

Orbit GCS - Baseline



Orbit GCS – REGISTERED Version



Upgrade Package 1

- 20 Orbit Networks
- 1000 Parts/Projects
- Custom Math Formulas
- Batch

Upgrade Package 2

- Part Mastering (Coming soon)

Upgrade Package 3

- SPC (Coming soon)

User may purchase upgrade packages for additional features (see Website for availability and instructions on how to purchase [Link](#). The Technical specification in this data sheet shows additional features either available now or planned for release

Technical Specifications

	Base	Registered	Upgrade Pk 1	Upgrade Pk 2	Upgrade Pk 3
Orbit Interface/Hardware Interface					
Number of Orbit Modules Supported	5	150			
Number of Orbit Networks Supported	1		20		
Orbit USBIM Compatible	•				
Orbit WCM Compatible (Wireless) (Note1)	•				
Orbit RS232IM Compatible	•				
Orbit ETHIM Compatible	•				
Orbit WIM Compatible	•				
Discrete Inputs and Outputs via DIOM	•				
USB Footswitch (Note 2)	•				
Measurement Features					
32 Dimensions	•				
Programmable Fail and Warning Limits	•				
Mesurement Logging to CSV file		•			
Batch Mode (Note 3)			•		
No of Parts/Projects	1		1000		
Logic functions	•				
Zero	•				
Abs	•				
Presets	•				
Max/Min	•				
Advanced Maths			•		
Part Mastering				•	
SPC Control Charts					•
SPC Histograms					•
Display Configurations					
Vertical Bars	•				
Horizontal bars	•				
Digital Readout	•				

Note 1: Allows all Solartron Wireless Handtools to be connected

Note 2: Generic USB footswitches should be compatible however see Orbit GCS Manual for tested footswitch detail

Note 3: Batch mode allows Part Serial numbers to be entred and stored

Sales Offices

UK (Headquarters and Factory)

Solartron Metrology
Bognor Regis, West Sussex, PO22 9ST
Tel: +44 (0) 1243 833 333
Fax: +44 (0) 1243 833 332
Email: sales.solartronmetrology@ametek.com

France

AMETEK SAS
Solartron Metrology Division
Elancourt, 78990 France
Tel: +33 (0) 1 30 68 89 50
Fax: +33 (0) 1 30 68 89 99
Email: info.solartronmetrology@ametek.com

Germany

AMETEK GmbH
Solartron Metrology Division
40670 Meerbusch
Tel: +49 (0) 2159 9136 500
Fax: +49 (0) 2159 9136 505
Email: vertrieb.solartron@ametek.com

China

AMETEK Commercial Enterprise (Shanghai)
Co., Ltd
Shanghai, 200131, China
Tel: +86 21 5763 2509
Email: china.solartronmetrology@ametek.com

North America

Solartron Metrology
USA Central Sales Office
Gastonia, NC 28054
Tel: +1 800 873 5838
Email: usasales.solartronmetrology@ametek.com

Distributors

Solartron have 30+ distributors worldwide, see website www.solartronmetrology.com for your nearest distributor

SCIGATE
Your Automation Partner



SCIGATE AUTOMATION (S) PTE LTD

No.1 Bukit Batok Street 22 #01-01 Singapore 659592
Tel: (65) 6561 0488 Fax: (65) 6562 0588
Email: sales@scigate.com.sg Web: www.scigate.com.sg

Business Hours: Monday - Friday 8.30am - 6.15pm

Precision Driven...

In the laboratory, on the shop floor or in the field, Solartron Metrology's products provide precise linear measurements for quality control, test and measurement and machine control. Solartron Metrology is a world leader in the innovation, design and manufacture of precision digital and analogue dimensional LVDT gauging probes, displacement sensors, optical linear encoders and associated instrumentation.

 **Solartron
Metrology**
AMETEK®
ULTRA PRECISION TECHNOLOGIES



Solartron Metrology pursues a policy of continuous development. Specifications in this document may therefore be changed without notice.