

Solartron Metrology - Line card

Key Linear Measurement sensors
for **Automation**

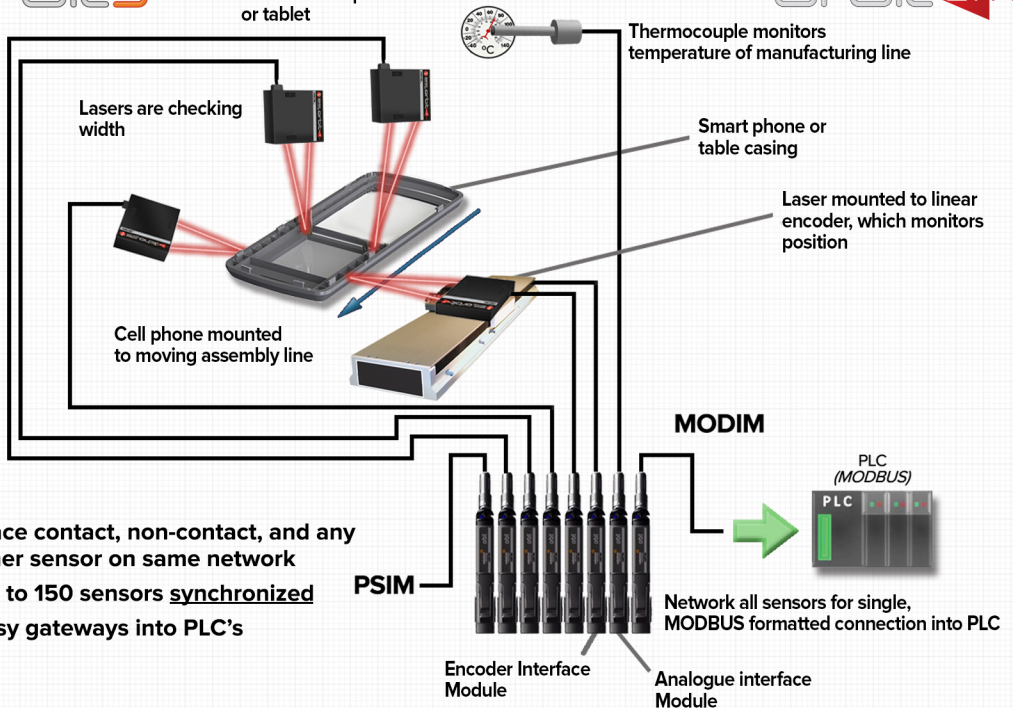


Accuracy - Calibrated Instruments that give you the correct measurement time after time
Simplicity - With the Orbit® 3 Network or Orbit® ACS, connection to PLC's or a network is simple
Durability - Rugged touch sensors tested to 15 million cycles, plus a proven Orbit sensor network

orbit3

lasers are checking internal
dimension of phone
or tablet

orbit LTH



- Place contact, non-contact, and any other sensor on same network
- Up to 150 sensors synchronized
- Easy gateways into PLC's

LVDT's

Pneumatic

Spring

Vacuum retract

Jet



- 8 and 6 mm diameter bodies
- Up to 0.05% F.S. Accuracy
- Tested to 15 million cycles, IP 65

Non-contact

Orbit® LTH

- 2, 10, 20 and 100 mm ranges
- Up to +/- 0.02% Linearity, 0.0076 micron resolution

Orbit® LT

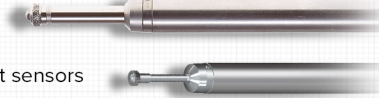
- 15 and 50 mm range
- +/- 0.1% Linearity, 1 micron resolution



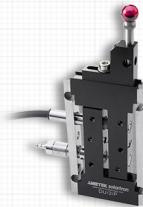
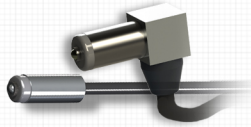


Feather/Ultra Feather Touch

- Lighter tip forces for glass, electronics, and other delicate surfaces
 - Feather Touch: As low as 0.3 N of tip force; Can withstand side load
 - Ultra Feather Touch: 0.03 to 0.05 N of tip force; Alternative to non-contact sensors
- Measuring ranges from 2 to 20 mm



Specialist Sensors

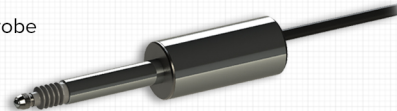


- Sensors for tight and awkward applications
- Full range of sizes and measurement ranges

Displacement

G-Type

- Gauging probe with integrated signal conditioning mounted to probe
 - DC Unipolar, BiPolar, and 4-20 mA outputs available
 - Excellent repeatability: < 0.15 µm
- Measuring ranges of 2 to 20 mm



Optimum

- 9.52 mm diameter narrow bodied high performance sensors
 - Free core and guided available
 - Larger radial bore clearance
- Measuring ranges of 3 to 50 mm



S and SR

- Free core and guided available; Multiple mounting options
 - 19 mm stainless steel body; Signal conditioning can be internal or separate
 - Options include IP65, IP67, high temp, submersible probes, IP68 rated
 - Digital or 4-20 mA outputs available
- Measuring ranges of 5 to 300 mm



Signal Conditioning



DIN Rail Conditioner

- DC, 4-20 mA



OD Series

- AC, DC Power
- DC, 4-20 mA outputs



BICM

- +15/-15 V or 24 V Power
- DC output



Absolute TTL

- Incremental or absolute, for TTL

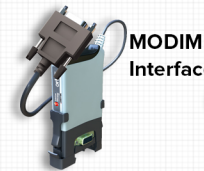
Orbit® 3 Network

Brief Introduction

- A fully formed digital measurement system that makes it simple to interconnect high accuracy Solartron instruments, and other sensors to your computer, network, or PLC
- Calibrated sensors with digitised outputs via Probe Interface Electronics modules
- Network up to 150 units, including 3rd party sensors



Interface Modules



MODIM Interface

- For Modbus PLC



Ethernet Interface

- Ethernet TCP/IP



RS232 Interface

- Up to 150 sensors



USB Interface

- Dynamic modes available



Wireless Interface

- Connect Orbit® 3 stack to PC via Bluetooth®

Input Modules



Encoder Input

- For TTL, incremental



Analogue Input

- For DC or 4-20 mA



Digital Input/Output

- 8 pins I/O into PLC



Digimatic Input

- Compatible to Digimatic Instruments

Orbit® ACS (Automation Control System)

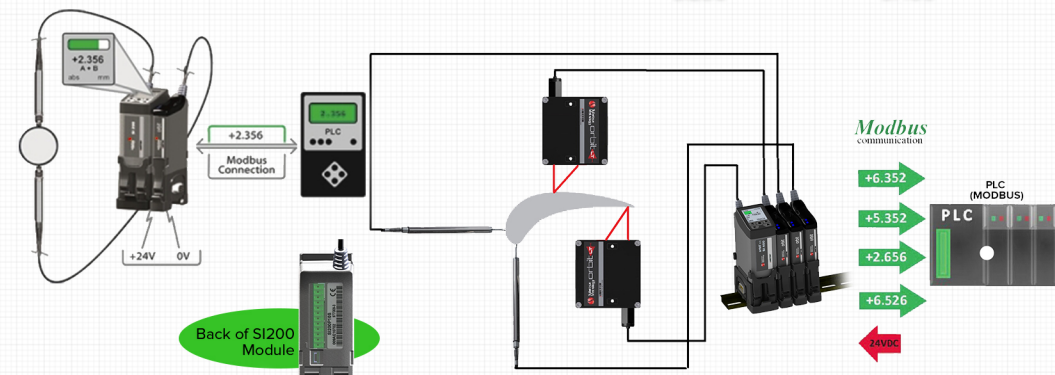
- Stand alone Orbit® systems or built for PLC interface
 - 1-4 channels, with Modbus, RS485, RS232, I/O
 - For use with both Orbit® 3 probes and non-contact lasers
- Pneumatic and spring available from 0.5 to 20 mm range

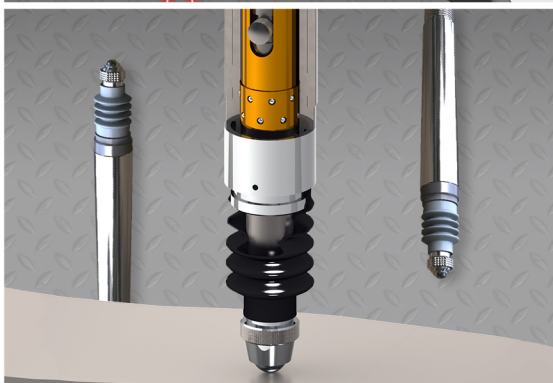
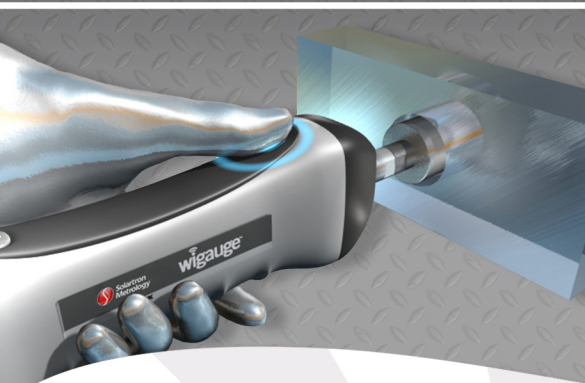
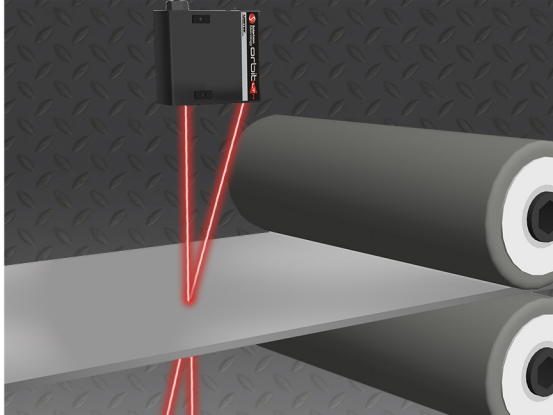
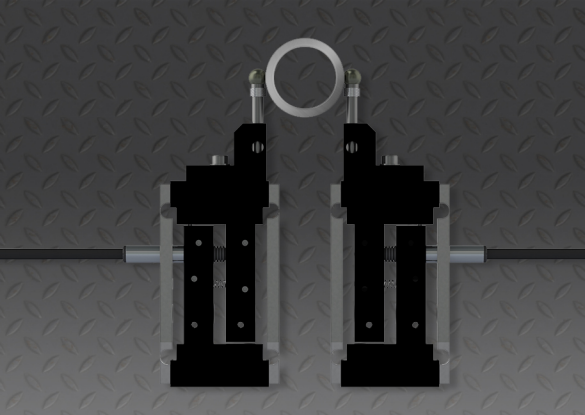


SI200



SI400





UK

Solartron Metrology
Bognor Regis, West Sussex, PO22 9ST
Tel: +44 (0) 1243 833333
Fax: +44 (0) 1243 833332
Email: sales.solartronmetrology@ametek.com

France

Ametek SAS
Solartron Metrology Division
Elancourt, 78990 France
Tel: +33 (0) 1 30 68 89 50
Fax: +33 (0) 1 30 68 89 99
Email: info.solartronmetrology@ametek.fr

Germany

Ametek GmbH
Solartron Metrology Division
40670 Meerbusch
Tel: +49 (0) 2159 9136 500
Fax: +49 (0) 2159 9136 505
Email: vertrieb.solartron@ametek.de

Brazil

AMETEK do Brasil, Ltda
Rod. Eng Ermenio de Oliveira Penteado, Km 57, SP75
Bairro Tombadouro
13337-300, Indaiatuba, SP, Brasil
Tel: 55 19 2107 4126

China

Ametek Commercial Enterprise (Shanghai)
Co., Ltd
Shanghai, 200131, China
Tel: +86 21 5763 2509
Email: china.solartronmetrology@ametek.com

USA

Solartron Metrology
USA Central Sales Office
Gastonia, NC 28054
Tel: +1 800 873 5838
Email: usasales.solartronmetrology@ametek.com

India

AMETEK Instruments India Private Limited
Whitefield, Bengaluru 560066
Karnataka, India
Tel: +91 80 6782 3200
Fax: +91 80 6782 3232



Elsewhere we have a global network of distribution partners providing local sales and technical support.



SCIGATE AUTOMATION (S) PTE LTD

No.1 Bukit Batok Street 22 #01-01 Singapore 659592

Tel: (65) 6561 0488

Fax: (65) 6562 0588

Email: sales@scigate.com.sg

Web: www.scigate.com.sg

Business Hours: Monday - Friday 8.30am - 6.15pm



www.solartronmetrology.com

