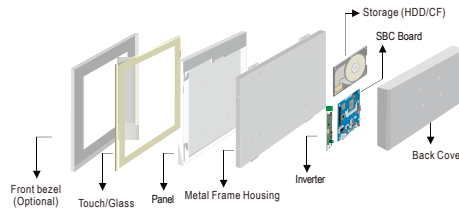


R12IB3S-PMM2 12.1" Panel PC (Intel® Celeron® Bay Trial-M N2930 1.83GHz)

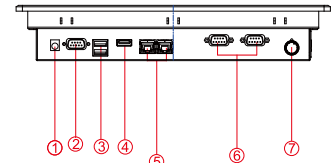
Mechanical Design



Panel Mount (6 mm front bezel)



Mechanical design

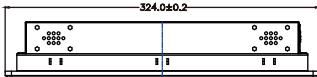


1. 12V DC in
2. RS232/422/485 (default RS232)
3. USB
4. HDMI
5. 2 x RJ45
6. RS232 (Optional)
7. Brightness/Adjustment

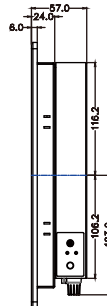
Fully Integrated I/O

Dimensions

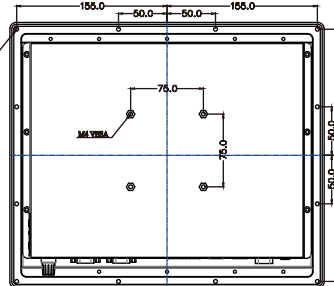
FRONT VIEW



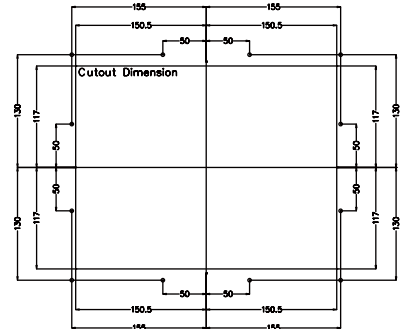
SIDE VIEW



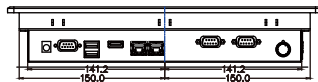
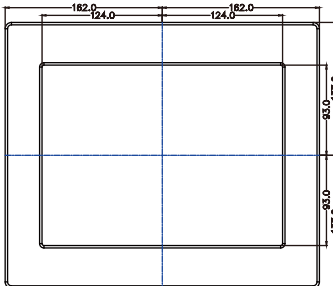
BACK VIEW



Cut Out



ALL DIMENSION ARE ± 0.5
CUT OUT DIMENSION(301*234mm)



BOTTOM VIEW

- * Measurements shown in mm
- * Tolerance of all dimensions is shown as follow 0~30 mm ± 0.1 mm, 30~50 mm ± 0.15 mm, 50~120 mm ± 0.2 mm, above 120 mm ± 0.25mm
- * Note: this is a simplified drawing and some components are not marked in detail. Please contact our sales representative if you need further product information.

Specifications

System :

- CPU : Intel® Celeron® Bay Trial-M N2930 1.83GHz
- Memory Slot : DDR3L 1066 MHz SO-DIMM Slot, Max. 8GB
- System Chipset : Intel®ATOM SoC Integrated
- IDE/SATA : 1 x SATA II
- LAN : Intel® I210-AT GbE LANx2
- Audio Codec : Realtek ALC886 HD Audio Codec

Panel Spec :

- Size/Type : 12.1" TFT
- Resolutions : 1024 x 768
- Brightness : 500 cd/m² (typ.)
- Contrast Ratio : 700 : 1 (typ.)
- Viewing Angles : -80~80(H); -70~70(V)
- Max Colors : 16.2M(8bit)

Input / Output :

- Serial Ports : 1 x RS-232/422/485, 2 x RS-232 (Optional)
- USB Ports : 1 x USB 3.0, 1 x USB 2.0
- Ethernet : 2 x RJ45-10/100/1000 Mbps
- HDMI : 1 x HDMI
- Power : 1 x DC-in Power Jack(+12V)

Environment Considerations :

- Operating Temperature : 0 deg.C to 45 deg.C
- Operating Humidity : 30% to 90% (non condensing)

Expansion Slot :

- 2 x Mini PCIe (1 for WiFi, 1 for SATA SSD)

OS BSP / Driver Support :

- Support Windows 10 IoT Enterprise / Windows Embedded 8* / Windows Embedded 7

* For Windows Embedded 8, this panel PC supports the Metro UI, but does not support the Snap View feature

Power Specifications :

- Power Input : 12V DC IN (Lockable Power Jack)
- Power Consumption : 32W (typ.)(Max.backlight & high CPU load)

Order Options :

- | | |
|--|--------------------------------|
| Mechanical : Panel Mount | Storage : 2.5" HDD/ mSATA |
| Touch : 5-Wires Resistive (Optional) | RAM : DDR3 1066 Max 8GB |
| AR Glass (Optional) | OS : Windows 10 IoT Enterprise |
| (A customized housing is needed if you have demands of SAW/IR/IT/SC touch) | Windows Embedded 8 / |
| | Windows Embedded 7 |

Accessories :

- External Adapter : 110~230V Ac-in Power Adapter



SCIGATE AUTOMATION (S) PTE LTD

No.1 Bukit Batok Street 22 #01-01 Singapore 659592
Tel: (65) 6561 0488 Fax: (65) 6562 0588
Email: sales@scigate.com.sg Web: www.scigate.com.sg

Business Hours: Monday - Friday 8.30am - 6.15pm



Date: 12-Jul-2017 V1.4

Note: All Specifications are subject to change without prior notice!