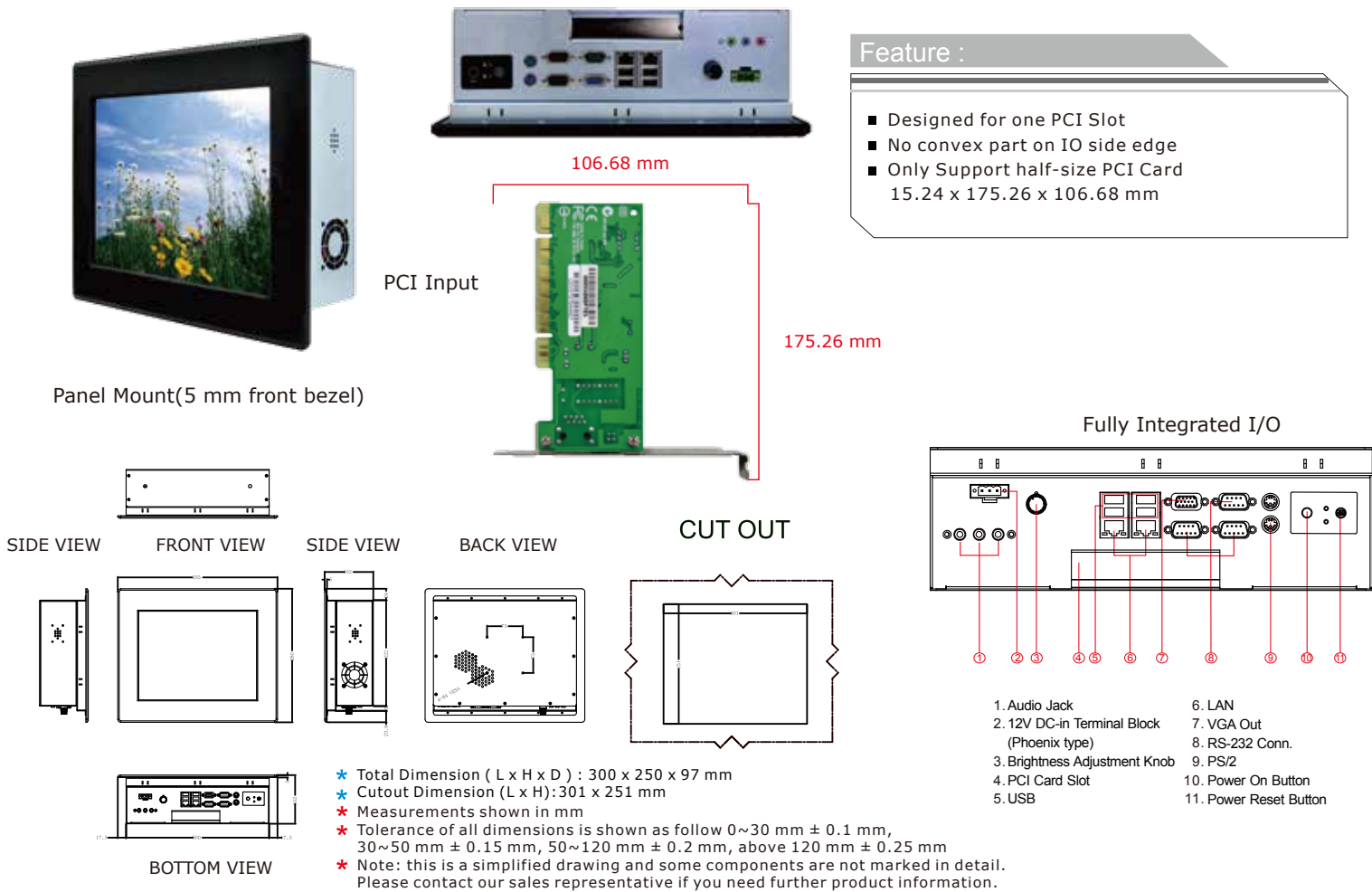


R12ID7T-PML1PS 12.1" Panel PC (Intel® Atom Dual Core D2550)

Mechanical Design



Feature :

- Designed for one PCI Slot
- No convex part on IO side edge
- Only Support half-size PCI Card
15.24 x 175.26 x 106.68 mm

Specifications

System :	
• CPU	: Intel®Atom Dual Core D2550 1.86 GHz
• Memory	: 1 x SODIMM Max 4GB DDR3 800/1066
• System Chipset	: Intel® NM10
• SATA	: 2 x SATA II
• LAN	: Dual Broadcom BCM 57780 GbE controller
• Audio Codec	: Realtek ACC886 HD Audio Codec

Panel Spec :	
• Size/Type	: 12.1" TFT
• Resolutions	: 800 x 600
• Brightness	: 450 cd/m ² (typ.)
• Contrast Ratio	: 700 : 1(typ.)
• Viewing Angles	: -80~80(H);-75~65(V)
• Max Colors	: 16.2M

Input / Output :	
• Serial Ports	: 2 x RS232, 1 x RS232/422/485
• USB Ports	: 4 x USB
• Keyboard / Mouse	: 2 x PS/2
• Ethernet	: 2XRJ45-10/100/1000Mbs
• VGA	: 1 x VGA (female)
• Audio	: Line-Out, Line-In, Mic in

• Default setting:RS232

Environment Considerations :	
• Operating Temperature	: 0°C to 50°C
• Operating Humidity	: 30% to 90% (non condensing)

Expansion Slot :	
• 1 x PCI (15.24 x 175.26 x 106.68 mm)	

* A customized housing is needed if you would like to have the PCI expansion.

Order Options :	
Mechanical : Open Frame	Storage : 2.5" HDD/ 2.5" SSD
Touch : Resistive	RAM : DDR3 800/1066 Max 4GB
	OS : Windows XP(E) Optional Windows XPPE (Optional) Windows 7 (Optional) Linux(Optional)

(A customized housing is needed if you have demands of IR touch)

Power Specifications :	
• Power Input	: Terminal block Phoenix type / 12V DC-in
• Power Consumption	: 33W (typ.)(Max. backlight & high CPU load)

Accessories :	
• External Power Supply 80W w/power cord	

SCIENCE GATE
Your Automation Partner

SCIGATE AUTOMATION (S) PTE LTD
No.1 Bukit Batok Street 22 #01-01 Singapore 659592
Tel: (65) 6561 0488 Fax: (65) 6562 0588
Email: sales@scigate.com.sg Web: www.scigate.com.sg
Business Hours: Monday - Friday 8.30am - 6.15pm

