

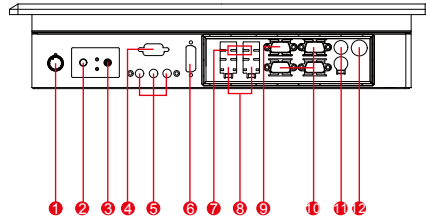
R15ID7T-PPC3 15" P-CAP Panel PC

Mechanical Design



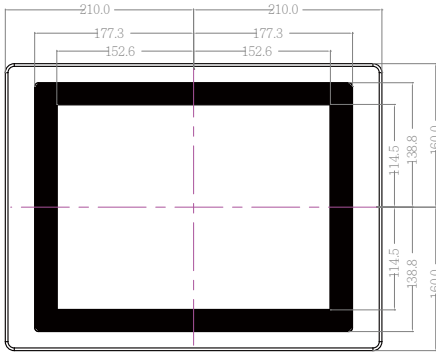
Real Flat Panel Mount (IP65 front side)

Fully Integrated I/O

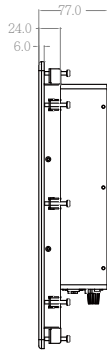


1. Brightness Adjustment Knob
2. Power On Button
3. Power Reset Button
4. RS-232 Conn. (Optional)
5. Audio Jack
6. DVI (Optional)
7. USB
8. LAN
9. VGA Out
10. RS-232 Conn.
11. PS/2
12. DC-IN Power Jack

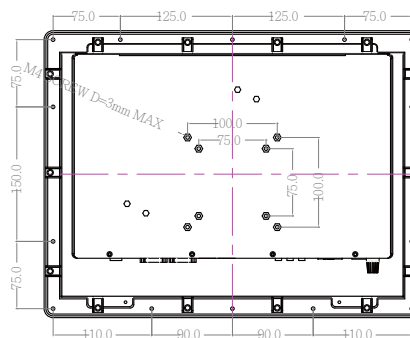
FRONT VIEW



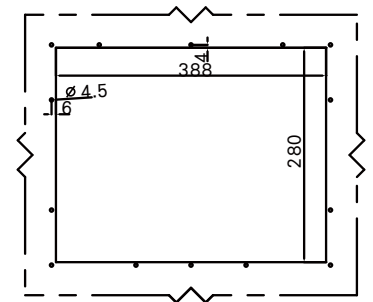
Dimensions



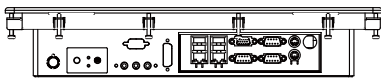
BACK VIEW



CUT OUT



1:2



BOTTOM VIEW

- * Measurements shown in mm
- * Tolerance of all dimensions is shown as follow 0~30 mm ± 0.1mm, 30~50 mm ± 0.15 mm, 50~120 mm ± 0.2 mm, above 120 mm ± 0.25 mm
- * Note: this is a simplified drawing and some components are not marked in detail. Please contact our sales representative if you need further product information.

Specifications

System

- CPU : Intel® Atom D2550 1.86GHz Processor
- Memory Slot : DDR3 1066 MHz SO-DIMM Slot (Default 2GB, Max to 4GB)
- System Chipset : NM10
- Storage : 32GB mSATA SSD (Default)
- LAN : Dual Broadcom BCM57780 GbE controller
- Audio Codec : Realtek ALC886 HD Audio Codec

Panel Spec

- Size/Type : 15" TFT
- Resolutions : 1024 x 768
- Brightness : 250 cd/m² (typ.)
- Contrast Ratio : 700 : 1 (typ.)
- Viewing Angle : -70~70(H); -60~60(V)
- Max. Colors : 16.2M
- Touch Screen : Projective Capacitive multi-touch

Input / Output

- Serial Ports : 2 x RS232, 1 x RS232/422/485
 - USB Ports : 4 x USB Type-A Receptacle
 - Keyboard / Mouse : 2 x PS/2
 - Ethernet : 2 x RJ 45-10/100/1000 Mbps
 - VGA : 1 x VGA (female)
 - Audio : Line-Out, Line-In, Mic in
- Default setting: RS232

Environment Considerations

- Operating Temperature : 0 deg.C to 50 deg.C
- Operating Humidity : 30% to 90% (non condensing)

OS BSP / Driver Support

- Support Windows Embedded Std.7 - WS7P

Power Specifications

- Power Input : 12V DC IN (Lockable Power Jack)
- Power Consumption : 38W (typ.)

Expansion Slot

- 2 x Mini PCIe, 1 x PCI
- * A customized housing is needed if you would like to have the PCI expansion.

Accessories

- External Adapter : 110~230V Ac-in power adapter



SCIGATE AUTOMATION (S) PTE LTD

No.1 Bukit Batok Street 22 #01-01 Singapore 659592
 Tel: (65) 6561 0488 Fax: (65) 6562 0588
 Email: sales@scigate.com.sg Web: www.scigate.com.sg

Business Hours: Monday - Friday 8.30am - 6.15pm



Note: All Specifications are subject to change without prior notice!

Date: 30-Nov-2016 V1.4