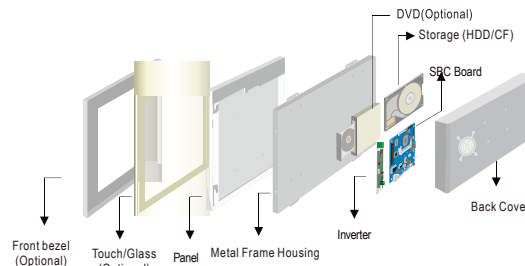
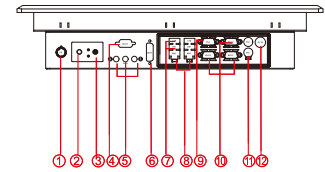


R17IC7T-IPM1 17" Panel PC (Intel® Core™ i7-620M/i5-520M)

Mechanical Design



Mechanical design



- | | |
|-------------------------------|------------------|
| 1. Brightness Adjustment Knob | 7. USB |
| 2. Power On Button | 8. RJ-45 |
| 3. Power Reset Button | 9. VGA Out |
| 4. RS-232 Conn. (Optional) | 10. RS-232 Conn. |
| 5. Audio Jack | 11. PS/2 |
| 6. DVI (Optional) | 12. 12V DC IN |

IP65 (8 mm front bezel)

Dimensions

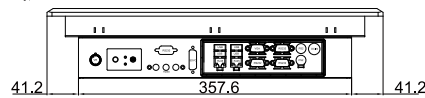
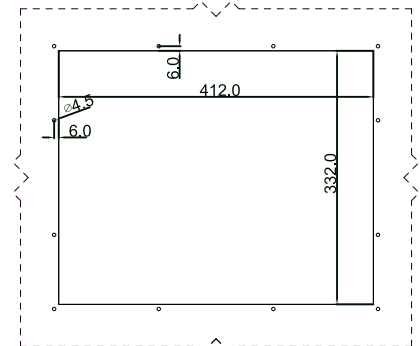
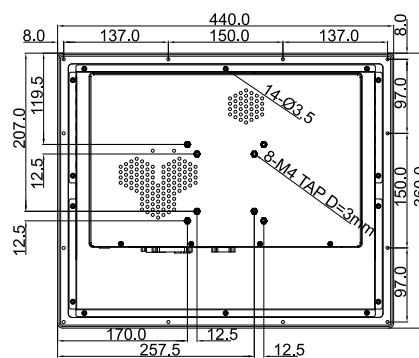
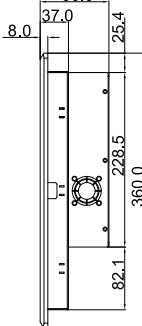
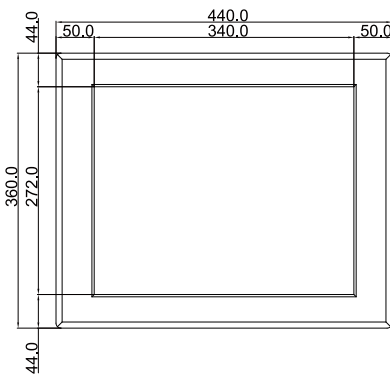
Fully Integrated I/O

FRONT VIEW

SIDE VIEW

BACK VIEW

IP65 CUT OUT



BOTTOM VIEW

- * Measurements shown in mm
- * Tolerance of all dimensions is shown as follow 0~30 mm ± 0.1 mm, 30~50 mm ± 0.15 mm, 50~120 mm ± 0.2 mm, above 120 mm ± 0.25 mm
- * Note: this is a simplified drawing and some components are not marked in detail. Please contact our sales representative if you need further product information.

Specifications

System :

- CPU : Intel® Core™ i7-620M/i5-520M Processor (2.66GHz / 2.4GHz)
- Memory : 2 x SO-DIMM, Max 8GB DDR3 1066/800
- System Chipset : Intel® HM55 Chipset
- Storage : 2 x SATA II
- LAN : Dual Broadcom BCM57780 GbE
- Audio Codec : Realtek ALC886 HD Audio Codec

Panel Spec :

- Size/Type : 17" TFT
- Resolutions : 1280 x 1024
- Brightness : 350 cd/m² (typ.)
- Contrast Ratio : 1000 : 1 (typ.)
- Viewing Angles : -85~85(H); -80~80(V)
- Max Colors : 16.7M (6bits+FRC)

Input / Output :

- Serial Ports : 2 x RS232, 1 x RS232/422/485
- USB Ports : 4 x USB
- Keyboard / Mouse : 2 x PS/2
- Ethernet : 2 x RJ 45-10/100/1000 Mbps
- VGA : 1 x VGA (female)
- Audio : Line-Out, Line-In, Mic in

• Default setting:RS232

Environment Considerations :

- Operating Temperature : 0 deg.C to 50 deg.C
- Operating Humidity : 30% to 90% (non condensing)

OS BSP / Driver Support :

- Support : Windows 7 / Windows XP Embedded / Windows XPP Embedded / Linux 2.6

Expansion Slot :

- 1 x PCI-E(x16), 2 x Mini PCI-E

Power Specifications :

- Power Input : 12V DC IN
- Power Consumption : 124W (typ.)(Max.backlight & high CPU load)

Accessories :

- External Adapter : 110~240V Ac-in power adapter

Order Options :

Mechanical : Open Frame	Storage : 3.5" HDD 250G
Panel Mount(8 mm bezel)	RAM : SO-DIMM DDR3 1066/800
IP65(8 mm bezel)	OS : Windows XPE (Optional)
Touch : 5 Wires Resistive(Optional)	Windows XPPE (Optional)
	Windows 7 (Optional)
	Linux 2.6 (Optional)
(A customized housing is needed if you have demands of SAW/IR/SC/IT touch)	DVD : Yes(Optional)



SCIGATE AUTOMATION (S) PTE LTD
 No.1 Bukit Batok Street 22 #01-01 Singapore 659592
 Tel: (65) 6561 0488 Fax: (65) 6562 0588
 Email: sales@scigate.com.sg Web: www.scigate.com.sg
 Business Hours: Monday - Friday 8.30am - 6.15pm



Revised date: 11-May-2017 V1.6

Note: All Specifications are subject to change without prior notice!