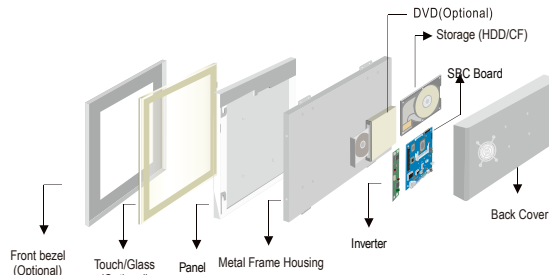


R19ID7T-IPM1 19" Panel PC (Intel® Atom Dual Core D2550+NM10 Platform)

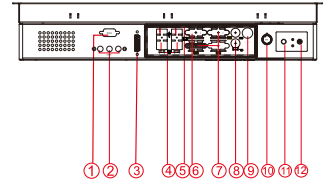
Mechanical Design



IP65 (8 mm front bezel)



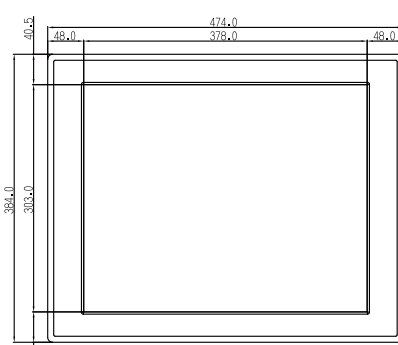
**Mechanical design
Dimensions**



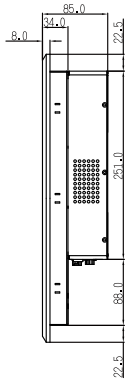
1. RS-232 Conn. (Optional)
2. Audio
3. DVI(Optional)
4. LAN
5. USB
6. VGA
7. RS-232 Conn.
8. PS/2
9. 12V DC-IN
10. Brightness Adjustment Knob
11. Power On Button
12. Power Reset Button

Fully Integrated I/O

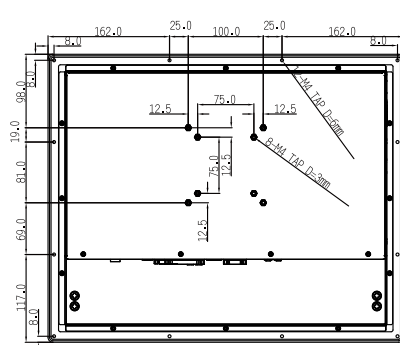
FRONT VIEW



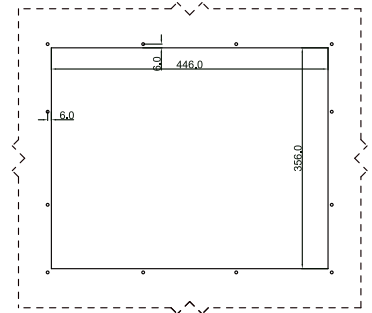
SIDE VIEW



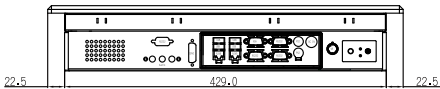
BACK VIEW



IP65 CUT OUT



BOTTOM VIEW



- * Measurements shown in mm
- * Tolerance of all dimensions is shown as follow 0~30 mm ± 0.1 mm, 30~50 mm ± 0.15 mm, 50~120 mm ± 0.2 mm, above 120 mm ± 0.25 mm
- * Note: this is a simplified drawing and some components are not marked in detail. Please contact our sales representative if you need further product information.

Specifications

System :

- CPU : Intel® Atom Dual Core D2550 1.86GHz Processor
- Memory Slot : DDR3 1600 MHz SO-DIMM Slot, Max. 4GB
- System Chipset : Intel® NM10
- Storage : 2 x SATA II
- LAN : Dual Broadcom BCM57780 GbE controller
- Audio Codec : Realtek ALC886 HD Audio Codec

Input / Output :

- Serial Ports : 2 x RS232, 1 x RS232/422/485
 - USB Ports : 4 x USB Type-A Receptacle
 - Keyboard / Mouse : 2 x PS/2
 - Ethernet : 2 x RJ45-10/100/1000 Mbps
 - VGA : 1 x VGA (female)
 - Audio : Line-out, Line-in, Mic in
- Default setting:RS232

Expansion Slot : (internal)

- 2 x Mini PCIe (1 for WiFi, 1 for 3G Module), 1 x PCI
- * A customized housing is needed if you would like to have the PCI expansion.

Power Specifications :

- Power Input : 12V DC IN
- Power Consumption : 57W (typ.)(Max.backlight & high CPU load)

Accessories :

- External Adapter : 110~240V Ac-in 12V DC-output Power Adapter

Panel Spec :

- Size/Type : 19"TFT
- Resolutions : 1280 x 1024
- Brightness : 250 cd/m²(typ.)
- Contrast Ratio : 1000 : 1(typ.)
- Viewing Angle : -85~85(H);-80~80(V)
- Max. Colors : 16.7M (8 bits/colors)

Environment Considerations :

- Operating Temperature : 0 deg.C to 50 deg.C
- Operating Humidity : 30% to 90% (non condensing)

OS BSP / Driver Support :

- Support Windows 7 embedded / Windows XP embedded

Order Options :

- | | |
|--|--|
| Mechanical : IP65 (8 mm bezel) | Storage : 2.5" HDD/ mSATA SSD |
| Touch : 5-Wires Resistive or AR | RAM : DDR3 1600 Max 4GB |
| Protective Glass either one | OS : Windows 7 embedded |
| (A customized housing is needed if you have demands of SAW/IR/IT/SC touch) | Standard/Windows XP embedded(Optional) |

SCIENCE GATE
Your Automation Partner

SCIGATE AUTOMATION (S) PTE LTD
No.1 Bukit Batok Street 22 #01-01 Singapore 659592
Tel: (65) 6561 0488 Fax: (65) 6562 0588
Email: sales@scigate.com.sg Web: www.scigate.com.sg

Business Hours: Monday - Friday 8.30am - 6.15pm



date: 15-Jul-2016 V1.6

Note: All Specifications are subject to change without prior notice!