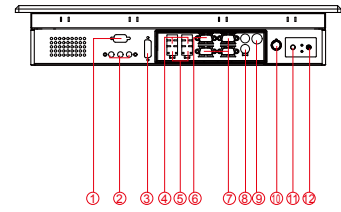
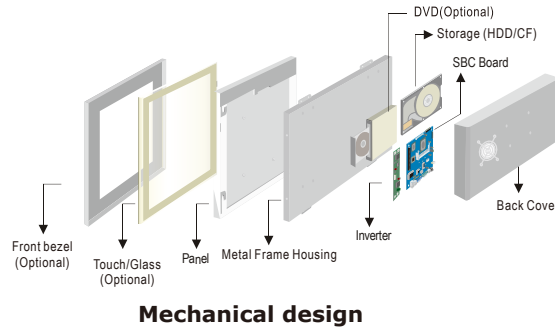


R19IV7T-IPA 1 19" Panel PC (Intel® 3rd Generation Core™ i7/i5/i3)

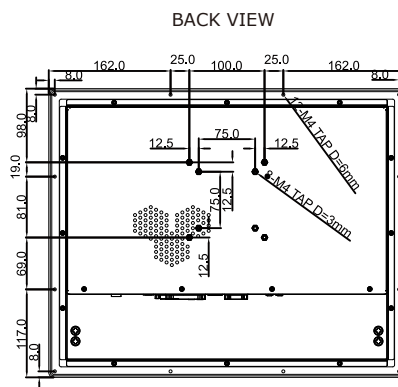
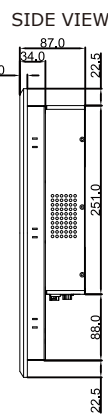
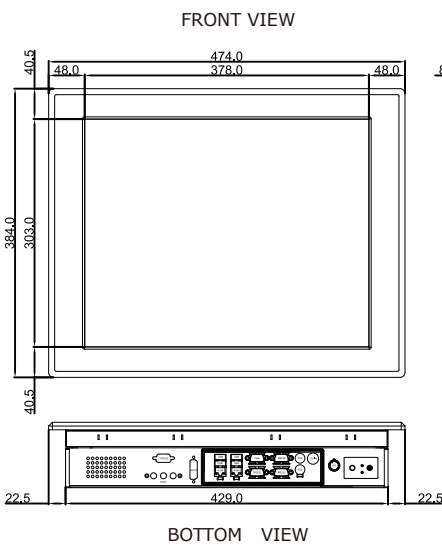
Mechanical Design



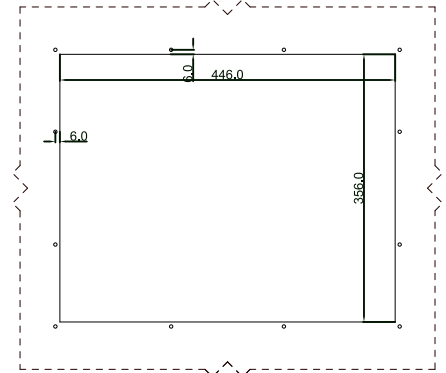
- Fully Integrated I/O**
1. RS-232 Conn. (Optional)
 2. Audio Jack
 3. DVI (Optional)
 4. USB
 5. LAN
 6. VGA
 7. RS-232 Conn.
 8. PS/2
 9. DC-IN Lockable Power Jack
 10. Brightness Adjustment Knob
 11. Power On Button
 12. Power Reset Button

IP65 (8 mm front bezel)

Dimensions



IP65 CUT OUT



- * Measurements shown in mm
- * Tolerance of all dimensions is shown as follow 0~30 mm ± 0.1 mm, 30~50 mm ± 0.15 mm, 50~120 mm ± 0.2 mm, above 120 mm ± 0.25 mm
- * Note: this is a simplified drawing and some components are not marked in detail. Please contact our sales representative if you need further product information.

Specifications

System

- CPU : Intel® 3rd Generation Core™ i7/i5/i3
- Memory : 2 x SO-DIMM, Max 16GB DDR3 1333/1600
- System Chipset : Intel® HM76 Chipset
- Storage : 1 x SATAIII, 1 x SATAII, 1 x mSATA
- LAN : Dual Broadcom BCM57780 GbE
- Audio Codec : Realtek ALC886 HD Audio Codec

Panel Spec

- Size/Type : 19" TFT
- Resolutions : 1280 x 1024
- Brightness : 400 cd/m² (typ.)
- Contrast Ratio : 1000 : 1 (typ.)
- Viewing Angles : -85~85(H); -80~80(V)
- Max Colors : 16.7M (8 bits/colors)

Input / Output

- Serial Ports : 2 x RS232, 1 x RS232/422/485
- USB Ports : 4 x USB 3.0
- Keyboard / Mouse : 2 x PS/2
- Ethernet : 2 x RJ45-10/100/1000Mbps
- VGA : 1 x VGA (female)

• Default setting: RS232

Environment Considerations

- Operating Temperature : 0 deg.C to 50 deg.C
- Operating Humidity : 30% to 90% (non condensing)

OS BSP / Driver Support

- Support Windows 10 IoT Enterprise / Windows 8 Embedded / Windows 7 Embedded / Windows XP Embedded

Expansion Slot

- 1 x PCI-E(x16), 2 x Mini PCI-E

Power Specifications

- Power Input : 12V DC IN (Lockable Power Jack)
- Power Consumption : 96W (typ.) (Max. backlight & high CPU load)

Accessories

- External Adapter : 110~230V Ac-in power adapter

Order Options

- | | |
|--|---|
| Mechanical : Open Frame
IP65(8 mm bezel) | Storage : 2.5" HDD / mSATA SSD |
| Touch : 5 Wires Resistive (Optional) | RAM : SO-DIMM DDR3 |
| | OS : Windows 10 IoT Enterprise
Windows 8 Embedded
Windows 7 Embedded
Windows XP Embedded |
| (A customized housing is needed if you have demands of SAW/IR/IT/SC touch) | DVD : Yes |



SCIGATE AUTOMATION (S) PTE LTD
 No. 1 Bukit Batok Street 22 #01-01 Singapore 659592
 Tel: (65) 6561 0488 Fax: (65) 6562 0588
 Email: sales@scigate.com.sg Web: www.scigate.com.sg



Revised Date: 06/17/2016 V1.1

Note: All Specifications are subject to change without prior notice!

Business Hours: Monday - Friday 8.30am - 6.15pm