





Winmate Clamp Mount Kit

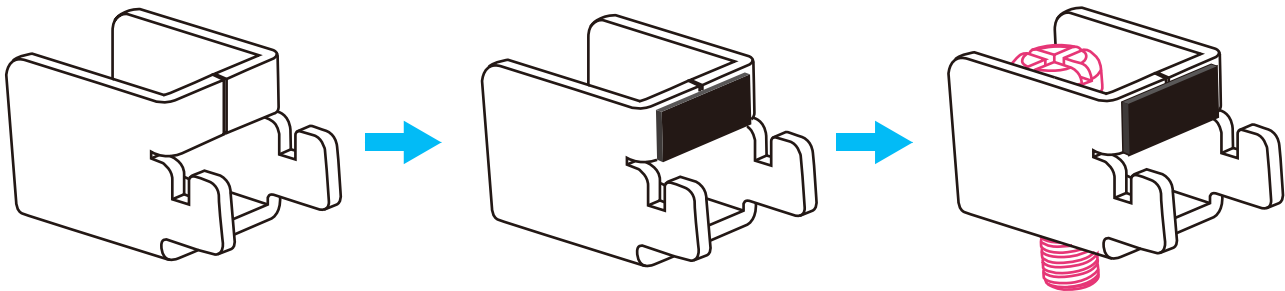
PN# 98K000A00062

| | Parts | Part Number | Amount |
|---|--|--------------|--------|
|  | Clamp | 82111J651500 | 14 |
|  | M4 x 30mm Hex socket cap Screw – black | 913511101135 | 14 |
|  | M4 x 15(L) Phillips Screw | 913511101F00 | 14 |
|  | Rubber sticker | 912511109100 | 14 |

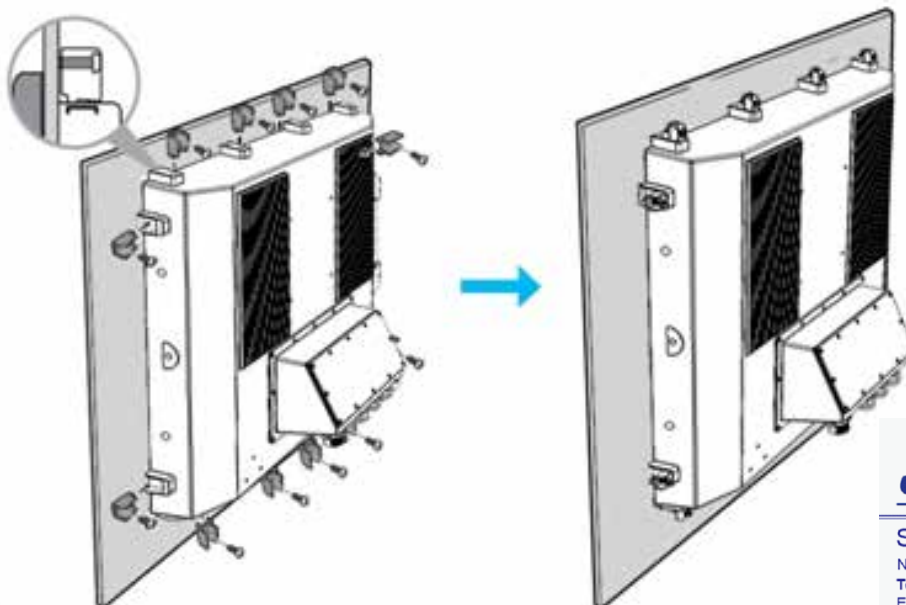
How to Use Winmate Clamp Mount

To mount the device to a sub frame or panel, do the following:

- Step 1. Prepare a cut out on a fixture according to the cutout dimension
- Step 2. Stick the rubber onto the mounting clamp and then insert the screw



- Step 3. Hook the mounting clamp into the corresponding mounting pair slots of the display. Then fasten the clamp with the included mounting screw to secure its position on the sub frame or panel. Repeat the same procedure for the remaining mounting clamps



SCIENCE GATE
Your Automation Partner



SCIGATE AUTOMATION (S) PTE LTD

No.1 Bukit Batok Street 22 #01-01 Singapore 659592

Tel: (65) 6561 0488

Fax: (65) 6562 0588

Email: sales@scigate.com.sg

Web: www.scigate.com.sg

Business Hours: Monday - Friday 8.30am - 6.15pm