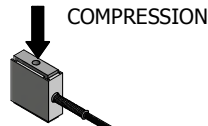


FUTEK MODEL LSB200 & QIA121

Robust S-Beam Junior Load Cell with Low Noise, High Speed, and High Resolution USB, and Voltage Output

ITEM NUMBER: See Table on Page 1

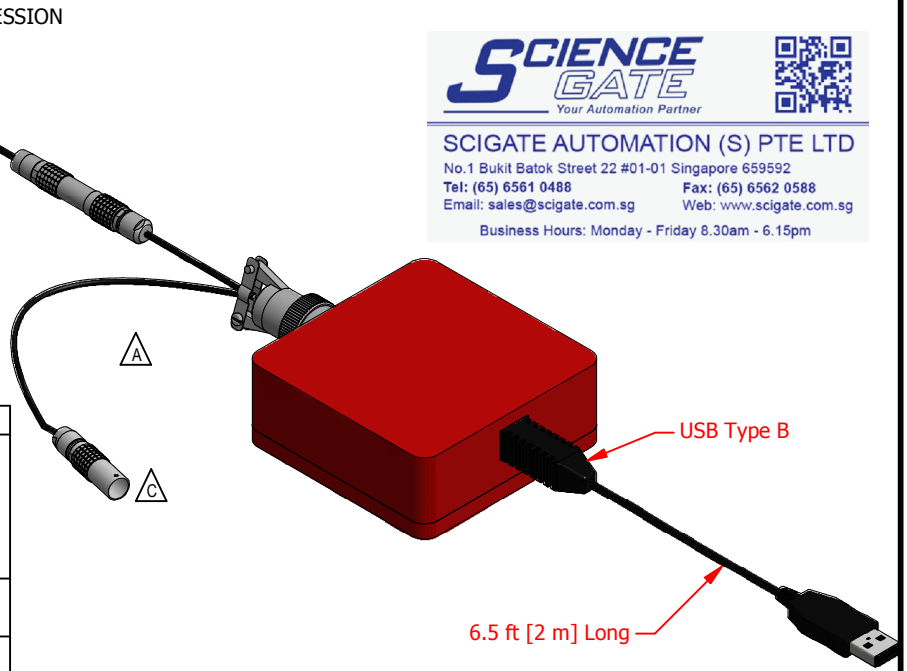
INCH [mm] | R.O.= Rated Output



SCIGATE AUTOMATION (S) PTE LTD
 No.1 Bukit Batok Street 22 #01-01 Singapore 659592
 Tel: (65) 6561 0488 Fax: (65) 6562 0588
 Email: sales@scigate.com.sg Web: www.scigate.com.sg
 Business Hours: Monday - Friday 8.30am - 6.15pm



Item #	Description
QSH01738	LSB200 , 2500 g , JR S-Beam Load Cell , Material - 17-4 PH S.S. , M3x0.5-Thread , Overload Protection , 29 Awg 4 Conductor Spiral Shielded Silicone Cable , 1 ft Long w/ 4 Pin Lemo Receptacle - PHG.0B.304.CLLD (CC4)
QSH01707	QIA121 , USB and Voltage Output , Analog Output , Red Powder Coated
FSH03813	QIA121 Cable Connector Assembly , 6 Pin Bendix (PT06A-10-6S-SR) to 4 Pin Lemo (FGG.0B.304.CLAD35) and 2 Pin Lemo (PHG.0B.302.CLLD42), 2x 29 Awg 4 Conductor Spiral Shielded , 6.5 ft Long and 1.64 ft long



6.5 ft [2 m] Long

SPECIFICATIONS

OUTPUTS	ASCII and 0-10 VDC	
CAPACITY	2500 g [24.5 N]	
SAFE OVERLOAD	1000% of R.O. (Compression)	
POWER SUPPLY (VDC)	USB Bus	
NONLINEARITY	±0.1% of R.O.	
HYSTERESIS	±0.1% of R.O.	
NONREPEATABILITY	±0.05% of R.O.	
TEMP. SHIFT ZERO	±0.02% of R.O./°F (±0.036 of R.O./°C)	
TEMP. SHIFT SPAN	±0.02% of LOAD/°F (±0.036 of LOAD/°C)	
COMPENSATED TEMP (Sensor Only)	13 to 113 °F (-11 to 45 °C)	
OPERATING TEMP	32 to 158 °F (0 to 70 °C)	
MATERIAL (Sensor)	17-4 PH S.S.	
IP RATING (Sensor)	IP40	
CALIBRATION:	5 pt Compression	
SENSOR CABLE:	29 AWG, 4 Conductor, Spiral Shielded Silicone Cable w/ 4 Pin Lemo Plug PHG.0B.304.CLLD	
QIA121 CABLE:	USB Cable A-B Mate Double Shielded	
QIA121 CONNECTOR:	6 Pin Bendix PT02E-10-6P	

Bandwidth	1 kHz
Bridge Excitation	10 VDC
Gain Adjustment	Field Programmable
Offset Adjustment	Field Programmable
Integrated Shunt	Field Programmable
CMRR	120 db
Analog Noise Output	< 8 mVp-p
Internal Resolution	24 bit
Noise Free Bits	up to 19 bits
ASCII Output Format	8 Character Hex Format (24 bit)
Integrated Pigtail Filter	50/60 Hz Rejection

Sampling Rate	Resolution (Noise Free Bits)
5	19
50	18
100	17
300	16.5
1200	15.5

CUSTOMER APPROVAL- COMPANY:

OUTLINE DRAWING

This drawing is submitted solely for the information and exclusive use of the original addressee. It is not to be divulged in whole or in part, by any firm or individual without written permission from:

FUTEK
 ADVANCED SENSOR TECHNOLOGY, INC.
 10 THOMAS, IRVINE, CA 92618 USA
 Phone: (949) 465-0900
 Fax: (949) 465-0905

CUSTOMER APPROVAL- NAME / DATE:

STANDARD NOTES: (Unless Otherwise Specified)

ALL DIMENSIONS ARE IN INCHES
 DRAWING INTERPRETATION DIMS. PER ASME-Y14.5M
 REMOVE BURRS AND BREAK SHARP EDGES .005 - .015
 THREADS PER HANDBOOK H-28
 DIMENSIONS ARE SHOWN AFTER PLATING

ANGLE:
± 1/2°

CHAMFER:
± 5°

TOLERANCE:
 .X ± 0.1"
 .XX ± 0.01"
 .XXX ± 0.005"



3rd ANGLE PROJ.

MODEL: **LSB200 & QIA121**

DWG No.: **FO1355-C**

DRAWN BY: *E. Pano*

CREATED DATE: *9/20/2013*

APPROVED BY: *R. Walker*

APPROVED DATE: *3/27/2014*

CHECKED BY:

CAGE: 1X8M6 SHEET: 1 OF 3

REVISIONS: (Refer to dwg # revision sheet)

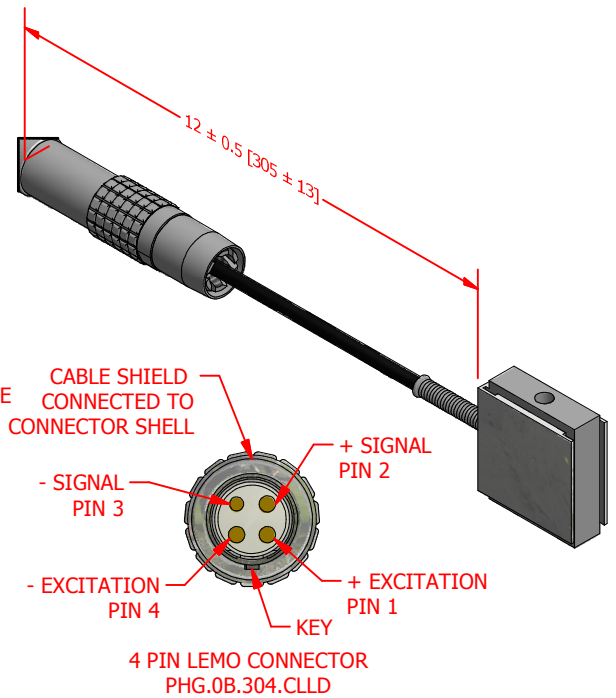
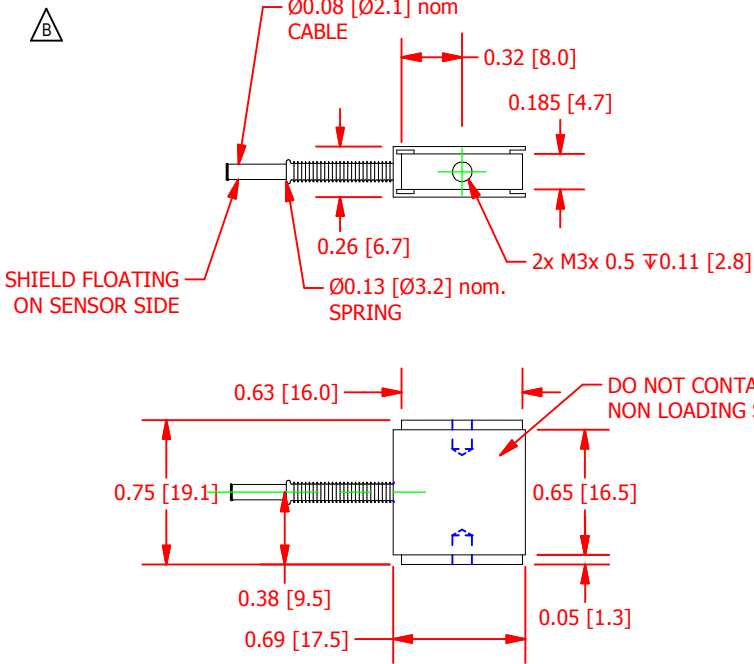
A	12/17/13
B	3/27/2014
C	5/7/2014

FUTEK MODEL LSB200 & QIA121

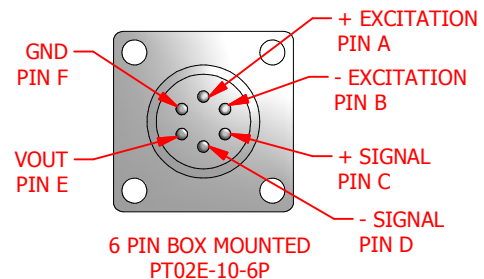
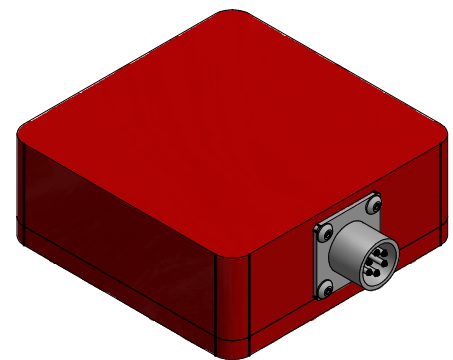
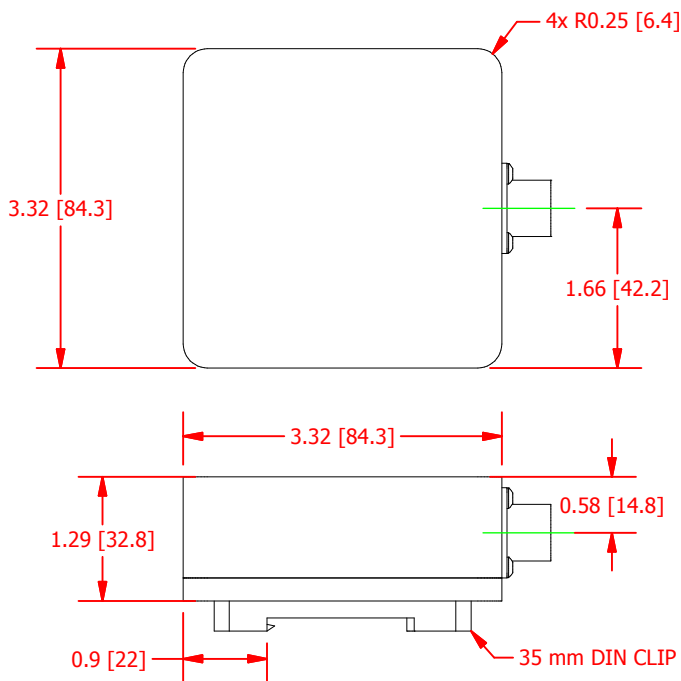
Robust S-Beam Junior Load Cell with Low Noise, High Speed, and High Resolution USB, and Voltage Output

ITEM NUMBER: See Table on Page 1

INCH [mm] | R.O. = Rated Output



ITEM#: QSH01738



ITEM#: QSH01707

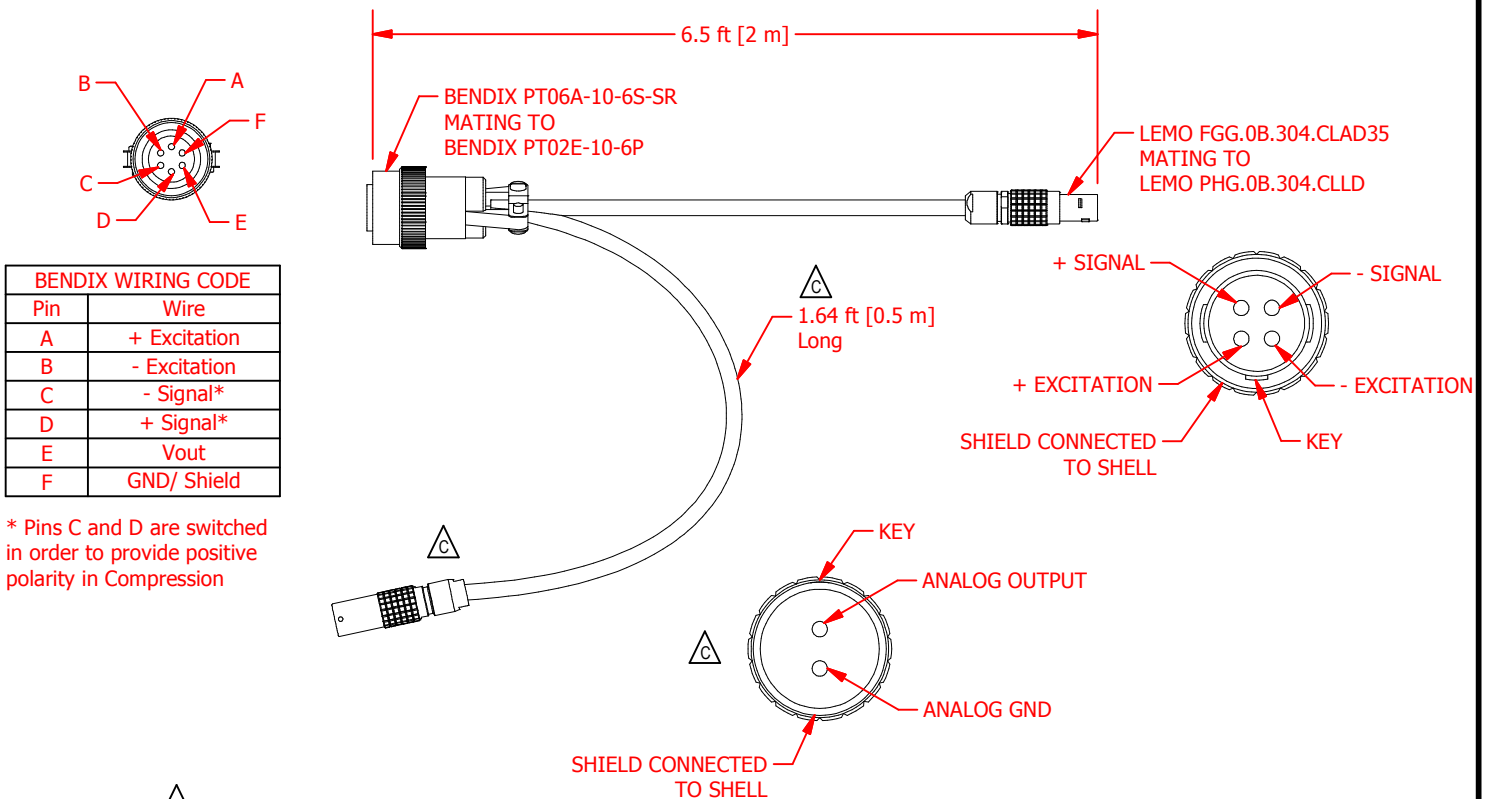
CUSTOMER APPROVAL- COMPANY:	<h2 style="color: green;">OUTLINE DRAWING</h2>	<p><i>This drawing is submitted solely for the information and exclusive use of the original addressee. It is not to be divulged in whole or in part, by any firm or individual without written permission from:</i></p>	<p>ADVANCED SENSOR TECHNOLOGY, INC. 10 THOMAS, IRVINE, CA 92618 USA Phone: (949) 465-0900 Fax: (949) 465-0905</p>
CUSTOMER APPROVAL- NAME / DATE:			
REVISIONS: (Refer to dwg # revision sheet)	<p>ANGLE: ± 1/2°</p> <p>CHAMFER: ± 5°</p> <p>3rd ANGLE PROJ.</p> <p>TOLERANCE: .X ± 0.1" .XX ± 0.01" .XXX ± 0.005"</p>		

FUTEK MODEL LSB200 & QIA121

Robust S-Beam Junior Load Cell with Low Noise, High Speed, and High Resolution USB, and Voltage Output

ITEM NUMBER: See Table on Page 1

INCH [mm] | R.O.= Rated Output



BENDIX WIRING CODE	
Pin	Wire
A	+ Excitation
B	- Excitation
C	- Signal*
D	+ Signal*
E	Vout
F	GND/ Shield

* Pins C and D are switched in order to provide positive polarity in Compression

ITEM#: FSH03813

CUSTOMER APPROVAL- COMPANY:	<h2 style="color: green;">OUTLINE DRAWING</h2>	<p><i>This drawing is submitted solely for the information and exclusive use of the original addressee. It is not to be divulged in whole or in part, by any firm or individual without written permission from:</i></p>	<p>ADVANCED SENSOR TECHNOLOGY, INC. 10 THOMAS, IRVINE, CA 92618 USA Phone: (949) 465-0900 Fax: (949) 465-0905</p>
CUSTOMER APPROVAL- NAME / DATE:			
REVISIONS: (Refer to dwg # revision sheet)	<p>STANDARD NOTES: (Unless Otherwise Specified) ALL DIMENSIONS ARE IN INCHES DRAWING INTERPRETATION DIMS. PER ASME-Y14.5M REMOVE BURRS AND BREAK SHARP EDGES .005 - .015 THREADS PER HANDBOOK H-28 DIMENSIONS ARE SHOWN AFTER PLATING</p> <p>ANGLE: ± 1/2° CHAMFER: ± 5° TOLERANCE: .X ± 0.1" .XX ± 0.01" .XXX ± 0.005"</p> <p>3rd ANGLE PROJ.</p>	<p>DRAWN BY: <i>E. Pano</i> APPROVED BY: <i>R. Walker</i></p> <p>CHECKED BY:</p>	<p>CREATED DATE: <i>9/20/2013</i> APPROVED DATE: <i>3/27/2014</i></p> <p>CAGE: 1X8M6 SHEET: 3 OF 3</p>