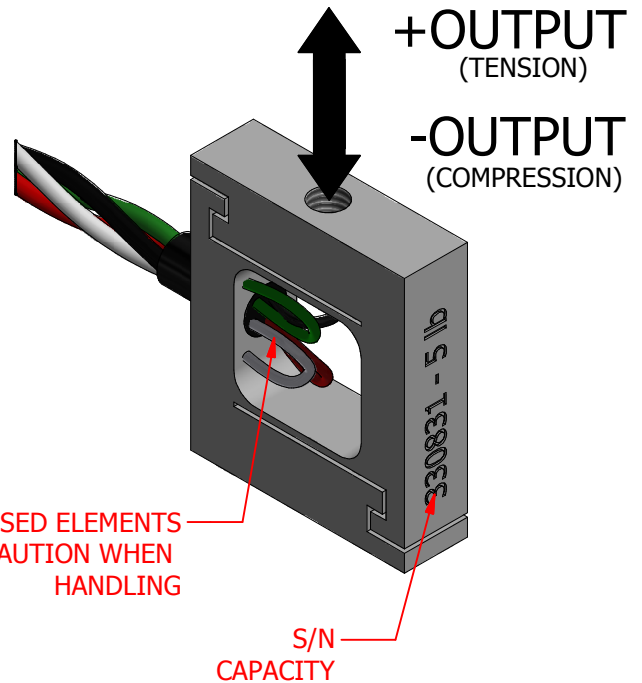
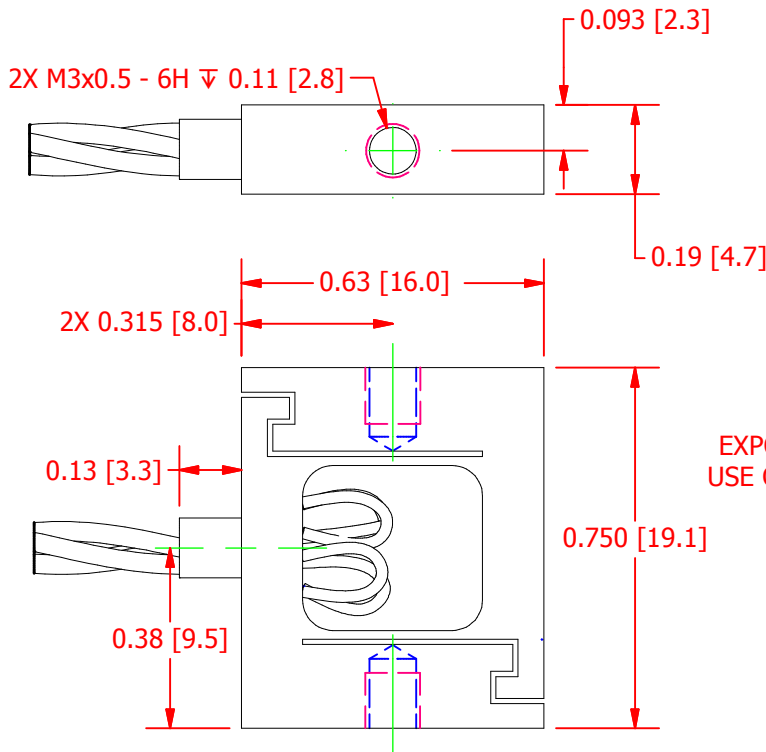


# FUTEK MODEL LSB200 JR S-BEAM LOAD CELL, LEAD FREE VERSION

ITEM NUMBER: QSH01746

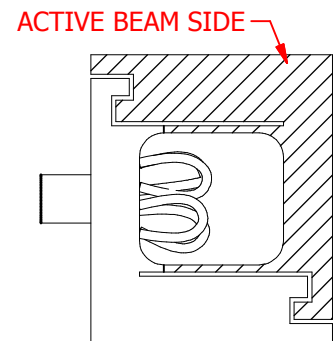


INCH [mm]		R.O. = Rated Output	
WIRING CODE			
+ Excitation	- Excitation	+ Signal	- Signal
RED	BLACK	GREEN	WHITE



## SPECIFICATIONS:

RATED OUTPUT	1.5-2.25 mV/V nom.
CAPACITY	5 lb [22 N]
SAFE OVERLOAD	1000 % of R.O.
ZERO BALANCE	±3 % of R.O.
EXCITATION (VDC OR VAC)	10 MAX
BRIDGE RESISTANCE	350 Ω nom
NONLINEARITY	±0.1% of R.O.
HYSTERESIS	±0.1% of R.O.
NONREPEATABILITY	±0.05% of R.O.
TEMP. SHIFT ZERO	±0.01% of R.O./°F (±0.036 of R.O./°C)
TEMP. SHIFT SPAN	±0.02% of LOAD/°F (±0.036 of LOAD/°C)
COMPENSATED TEMP.	60 to 160°F (15 to 72 °C)
OPERATING TEMP	-60 to 200°F (-51 to 93 °C)
MATERIAL	ALUMINUM
CABLE: 26 Awg, 4 Conductor Spiral Cable, 8.0" Long	
RoHS Lead Free	YES
ISO 13485 COMPLIANCE	YES
IPC/W HMA-A-620 COMPLIANCE	YES (Cable Assembly)
CE COMPLIANCE	EN 55011:2009, EN 61326-1:2006



**SCIENCE GATE**  
Your Automation Partner

**SCIGATE AUTOMATION (S) PTE LTD**  
No.1 Bukit Batok Street 22 #01-01 Singapore 659592  
Tel: (65) 6561 0488 Fax: (65) 6562 0588  
Email: sales@scigate.com.sg Web: www.scigate.com.sg  
Business Hours: Monday - Friday 8.30am - 6.15pm

CUSTOMER APPROVAL- COMPANY:
CUSTOMER APPROVAL- NAME / DATE:

## OUTLINE DRAWING

STANDARD NOTES: (Unless Otherwise Specified)  
ALL DIMENSIONS ARE IN INCHES  
DRAWING INTERPRETATION DIMS. PER ASME-Y14.5M  
REMOVE BURRS AND BREAK SHARP EDGES .005 - .015  
THREADS PER HANDBOOK H-28  
DIMENSIONS ARE SHOWN AFTER PLATING

ANGLE: ± 1/2°  
CHAMFER: ± 5°  
TOLERANCE:  
.X ± 0.1"  
.XX ± 0.01"  
.XXX ± 0.005"

3rd ANGLE PROJ.

This drawing is submitted solely for the information and exclusive use of the original addressee. It is not to be divulged in whole or in part, by any firm or individual without written permission from:

**FUTEK**  
ADVANCED SENSOR TECHNOLOGY, INC.  
10 THOMAS, IRVINE, CA 92618 USA  
Phone: (949) 465-0900  
Fax: (949) 465-0905

REVISIONS: (Refer to dwg # revision sheet)

MODEL: <b>LSB200</b>	DWG No.: <b>FO1366</b>
DRAWN BY: M. Lisiak	CREATED DATE: 5/8/2014
APPROVED BY: R. Walker	APPROVED DATE: 5/8/2014
CHECKED BY:	CAGE: 1X8M6 SHEET: 1 OF 1