

FUTEK MODEL LLB250

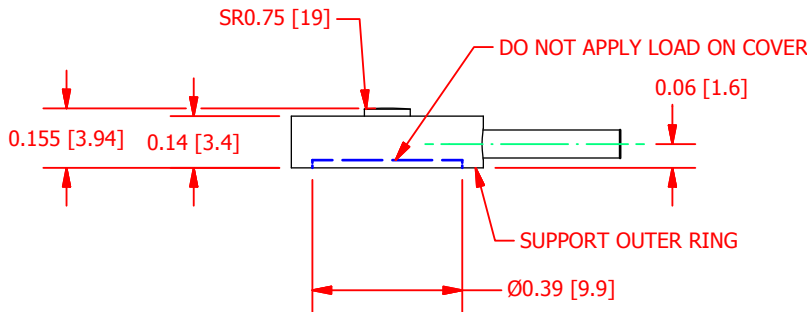
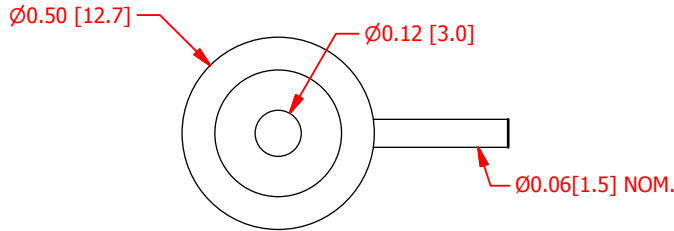
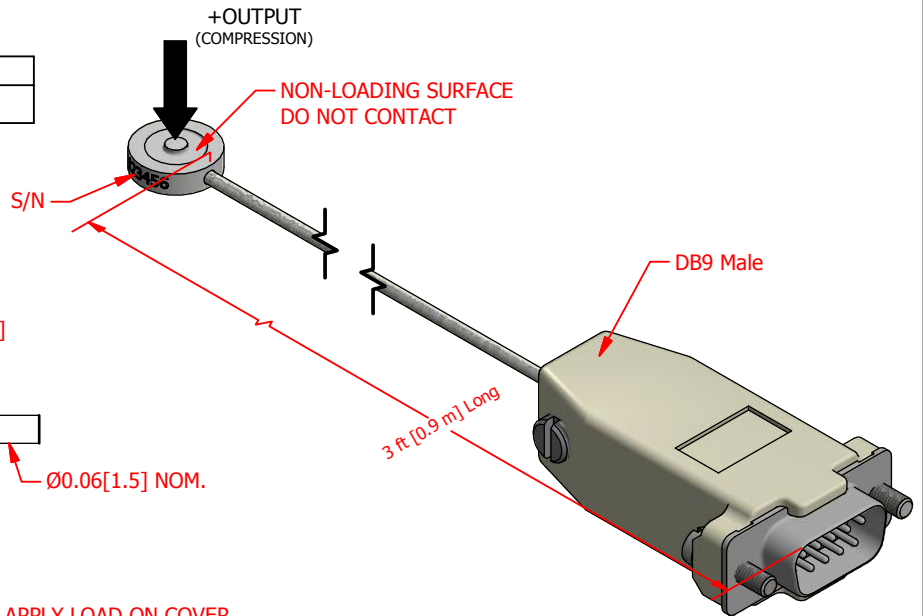
ITEM NUMBER: QSH01752

SUBMINIATURE LOAD BUTTON w/ TEDS (IEEE1451.4) RECOGNITION AND DB9 MALE

INCH [mm] | R.O.= Rated Output

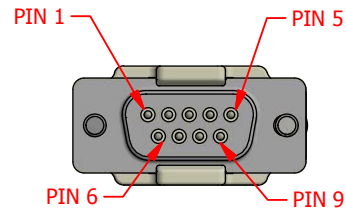
WIRING CODE (CC15)

+ Excitation	- Excitation	+ Signal	- Signal	
PIN 2	PIN 7	PIN 1	PIN 6	▲
Shield	TEDS DATA	TEDS GND	+ Sense	-Sense
FLOATING	PIN 5	PIN 9	PIN 4	PIN 8



SPECIFICATIONS

RATED OUTPUT	1.5mV/V Nom.
CAPACITY	100 lb [444 N]
SAFE OVERLOAD	150% of R.O.
ZERO BALANCE	±10% of R.O.
EXCITATION (VDC OR VAC)	7 MAX
BRIDGE RESISTANCE	350 Ω nom
NONLINEARITY	±0.5% of R.O. (BFSL) ±1% of R.O. (END POINT)
HYSTERESIS	±1% of R.O.
NONREPEATABILITY	±0.5% of R.O.
TEMP. SHIFT ZERO	±0.05% of R.O./°F (±0.09 of R.O./°C)
TEMP. SHIFT SPAN	±0.02% of LOAD/°F (±0.036 of LOAD/°C)
COMPENSATED TEMP.	60 to 90 °F (16 to 32 °C)
OPERATING TEMP	-40 to 185 °F (-40 to 85 °C)
WEIGHT (approx)	0.1 lb
MATERIAL	17-4 PH S.S
CABLE	Braided Shielded Cable, 3 ft Long
CONNECTOR	DB9 MALE



DB9 FRONT SIDE VIEW
SEE WIRING CODE TABLE FOR PIN OUTS



SCIGATE AUTOMATION (S) PTE LTD
 No.1 Bukit Batok Street 22 #01-01 Singapore 659592
 Tel: (65) 6561 0488 Fax: (65) 6562 0588
 Email: sales@scigate.com.sg Web: www.scigate.com.sg
 Business Hours: Monday - Friday 8.30am - 6.15pm

CUSTOMER APPROVAL- COMPANY:

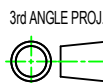
CUSTOMER APPROVAL- NAME / DATE:

REVISIONS: (Refer to dwg # revision sheet)

A	6/17/14
---	---------

OUTLINE DRAWING

STANDARD NOTES: (Unless Otherwise Specified)
 ALL DIMENSIONS ARE IN INCHES
 DRAWING INTERPRETATION DIMS. PER ASME-Y14.5M
 REMOVE BURRS AND BREAK SHARP EDGES .005 - .015
 THREADS PER HANDBOOK H-28
 DIMENSIONS ARE SHOWN AFTER PLATING



ANGLE:
± 1/2°

CHAMFER:
± 5°

TOLERANCE:
.X ± 0.1"
.XX ± 0.01"
.XXX ± 0.005"

This drawing is submitted solely for the information and exclusive use of the original addressee. It is not to be divulged in whole or in part, by any firm or individual without written permission from:

FUTEK
 ADVANCED SENSOR TECHNOLOGY, INC.
 10 THOMAS, IRVINE, CA 92618 USA
 Phone: (949) 465-0900
 Fax: (949) 465-0905

MODEL: LLB250	DWG No.: FO1371-A
DRAWN BY: E. Pano	CREATED DATE: 6/12/2014
APPROVED BY: R. Walker	APPROVED DATE: 6/12/2014
CHECKED BY:	CAGE: 1X8M6 SHEET: 1 OF 1