

SENSIT Installation Instructions



SENSIT Installation Instructions

Table of Contents

Installation Overview	1
Microsoft .NET Framework 4 Installation	2
FTDI Driver CDM 02.08.30 Installation	4
SENSIT Test and Measurement Version 2.3.4003.3 Installation	8
Release Information	12
Copyright	12
Disclaimer.....	12
Contact Information.....	12

SENSIT Installation Instructions

Installation Overview

This installation instruction manual outlines all of the necessary steps to install the components required to start using the SENSIT Test and Measurement software. This installation will work for computers running Windows based 32-bit or 64-bit (x86 or x64) operating systems.

SENSIT Test and Measurement requires the following prerequisites:

[Microsoft .NET Framework 4](#)

[FTDI Drivers CDM 02.08.30](#)

Please Note: the SENSIT Test and Measurement 2.3 – InstallShield Wizard will automatically prompt the user to install the prerequisites if they are not already installed.

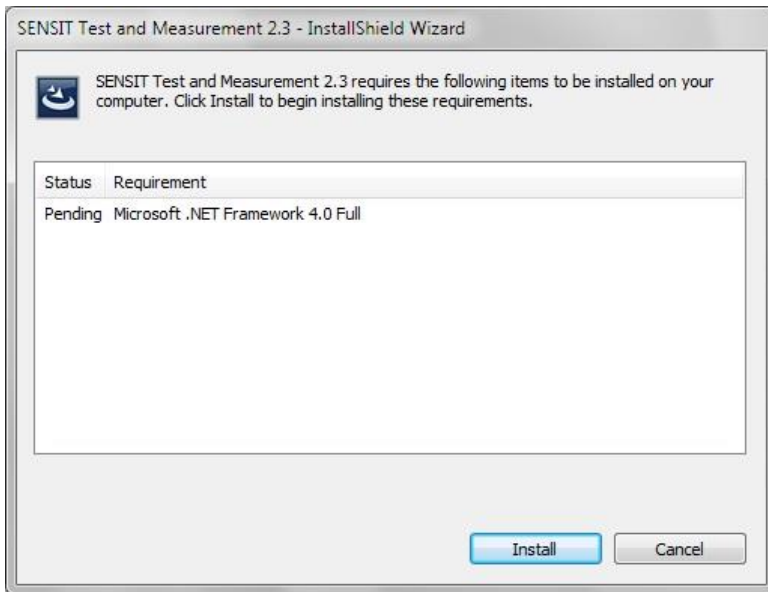
SENSIT Installation Instructions

Microsoft .NET Framework 4 Installation

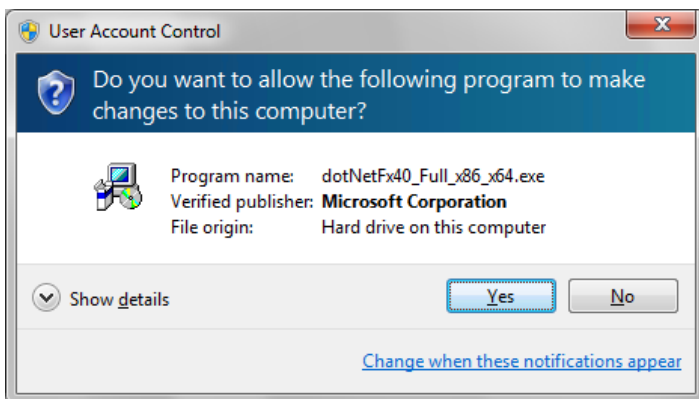
One of the prerequisites to using the SENSIT Test and Measurement software is to install Microsoft .NET Framework 4, which can be found using the following link:

<http://go.microsoft.com/fwlink/?LinkID=186913>

The **SENSIT Test and Measurement 2.3 – InstallShield Wizard** will appear. Click **Install** to begin installing the prerequisites.

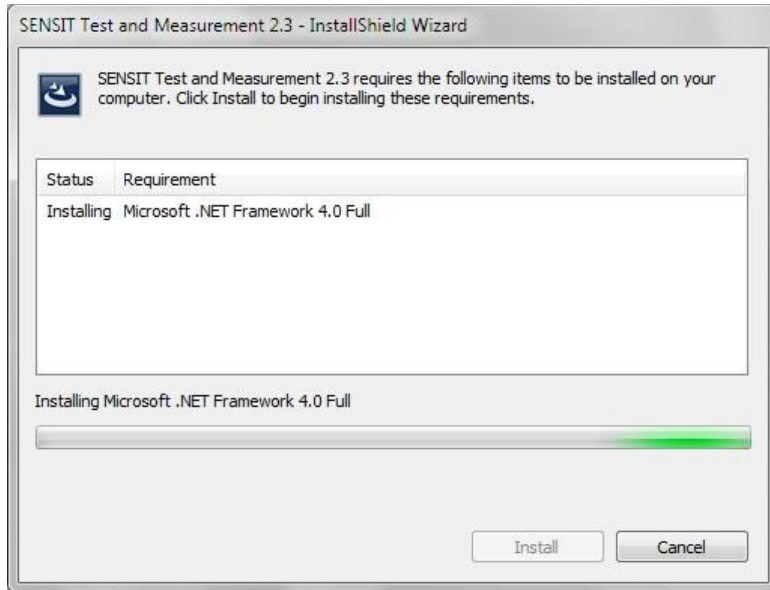


The **User Account Control** dialog may appear depending on the Operating System. When asked: **Do you want to allow the following program to make changes to this computer?** Click **Yes**.



SENSIT Installation Instructions

Wait for the **SENSIT Test and Measurement 2.3 – InstallShield Wizard** to install the .NET Framework. This may take several minutes.

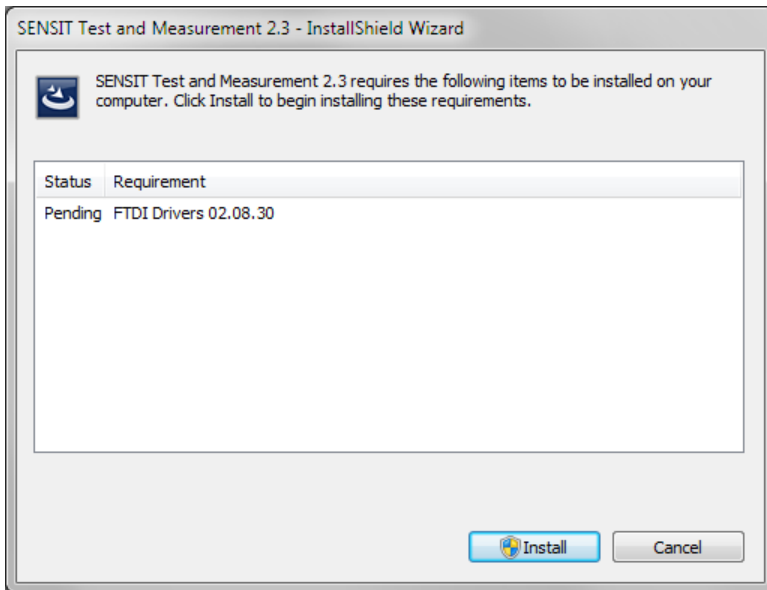


SENSIT Installation Instructions

FTDI Driver CDM 02.08.30 Installation

One of the prerequisites to using the SENSIT Test and Measurement software is to install the necessary drivers to communicate with FUTEK's USB Devices. The drivers are provided by Future Technology Devices International Ltd. (FTDI) and a full listing can be found using the following link: <http://www.ftdichip.com/Drivers/D2XX.htm>

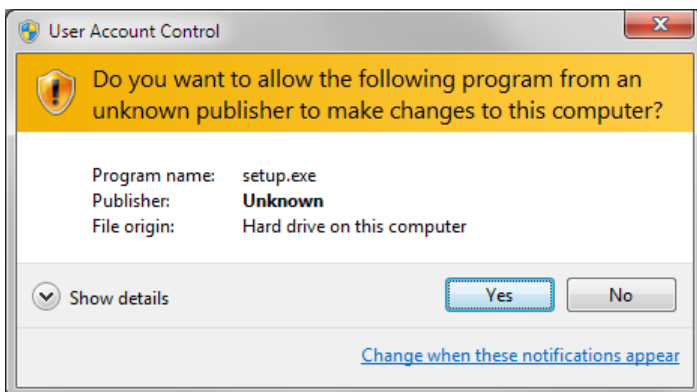
The **SENSIT Test and Measurement 2.3 – InstallShield Wizard** will appear. Click **Install** to begin installing the prerequisites.



The **User Account Control** dialog may appear depending on the Operating System.

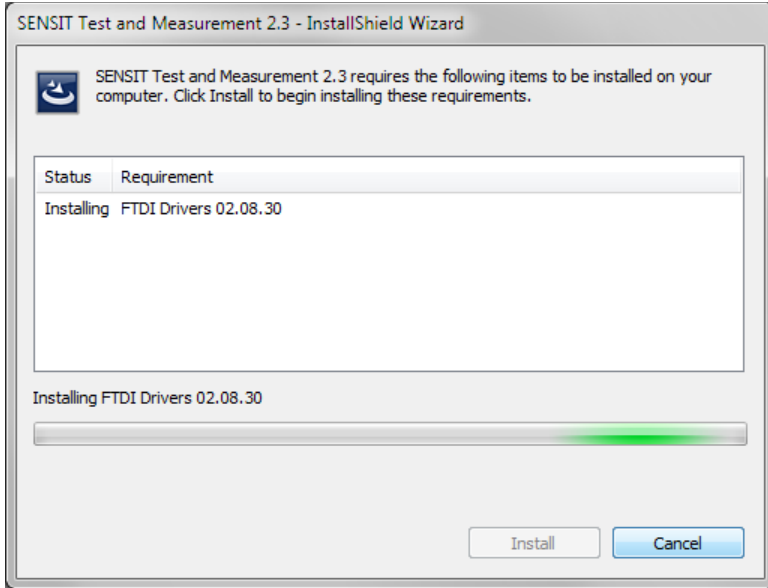
When asked: **Do you want to allow the following program from an unknown publisher to make changes to this computer?**

Click **Yes**.

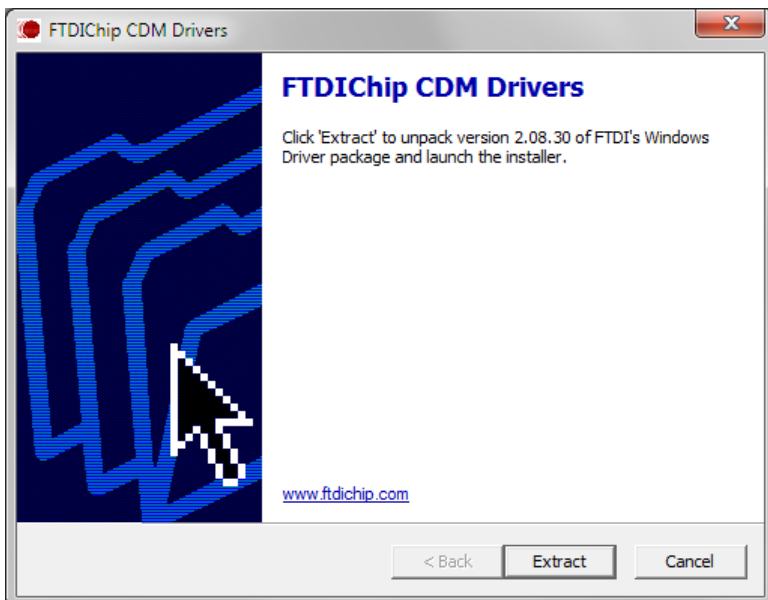


SENSIT Installation Instructions

Wait for the **SENSIT Test and Measurement 2.3 Setup** to install the FTDI Drivers. This may take several seconds.

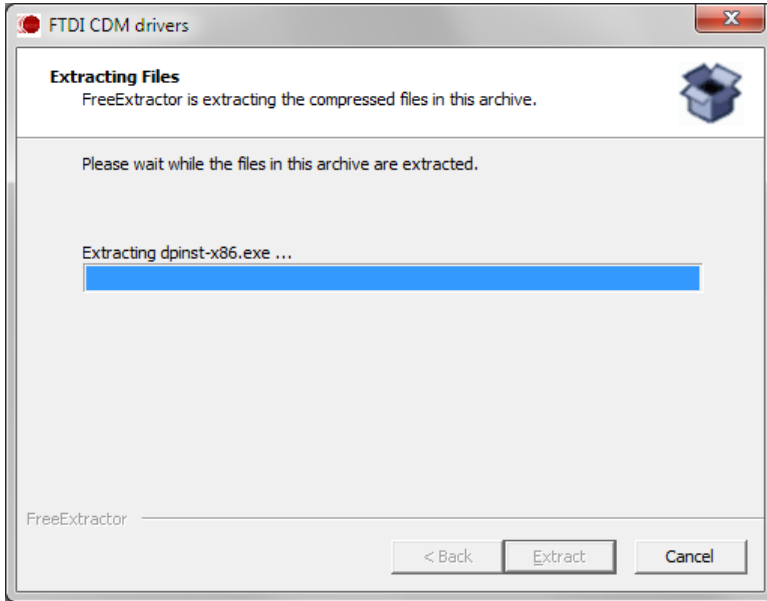


The **FTDI CDM Drivers** dialog will appear. Click **Extract**.

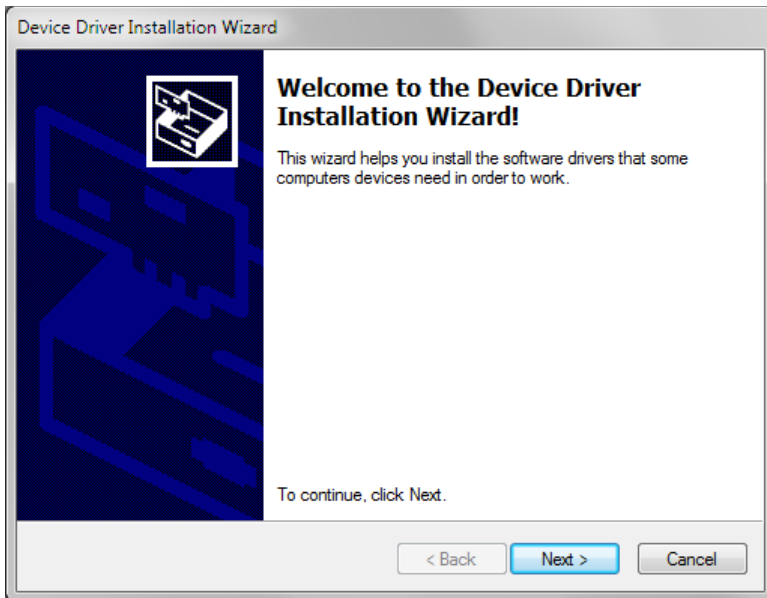


SENSIT Installation Instructions

Wait for the extracting to be completed.

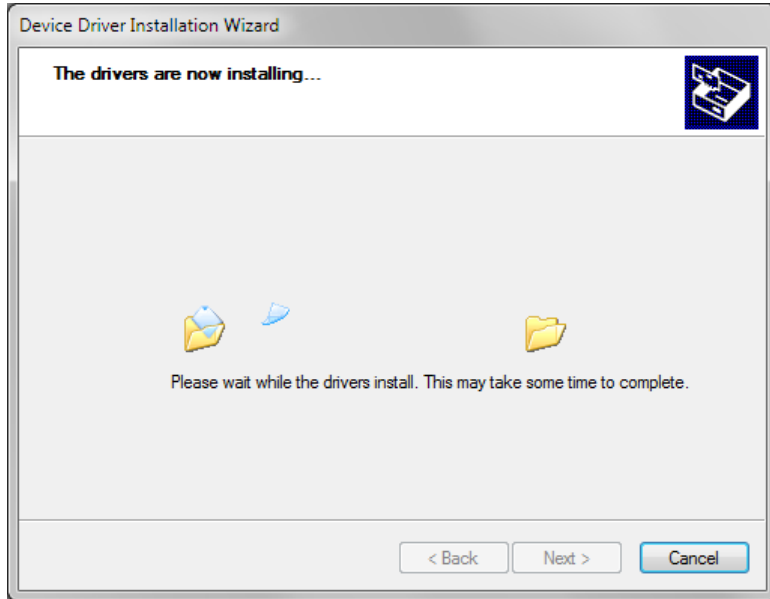


The **Welcome to the Device Driver Installation Wizard** dialog will appear. Click **Next >**.

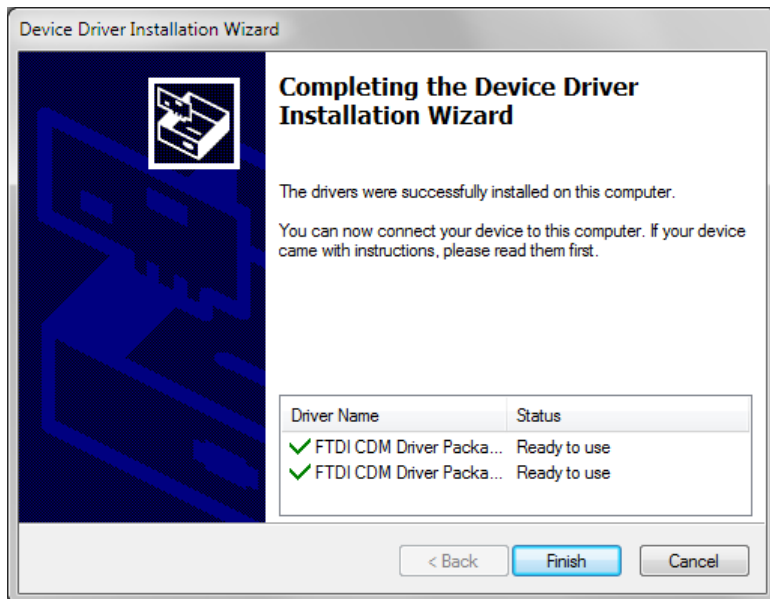


SENSIT Installation Instructions

Wait for the installation of the drivers to be completed.



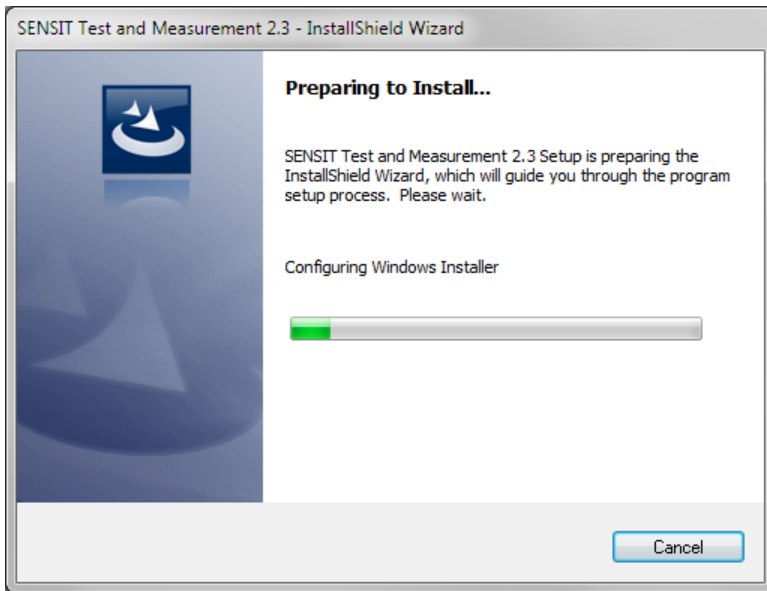
The **Completing the Device Driver Installation Wizard** dialog will appear. Click **Finish**.



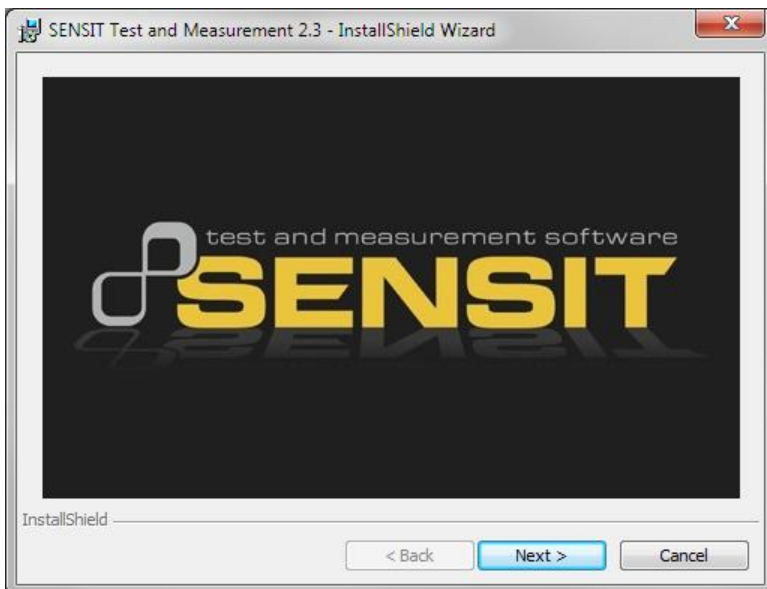
SENSIT Installation Instructions

SENSIT Test and Measurement Version 2.3.4003.3 Installation

The **SENSIT Test and Measurement 2.3 – InstallShield Wizard** dialog will appear.
Wait for the wizard to prepare the installation.

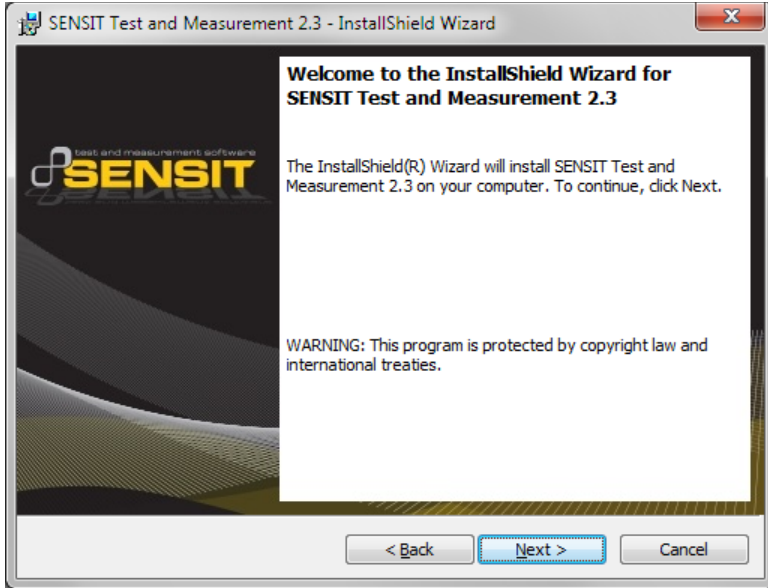


The **SENSIT Test and Measurement 2.3** dialog will appear.
Click **Next >**.



SENSIT Installation Instructions

The **Welcome to the InstallShield Wizard for SENSIT Test and Measurement 2.3** dialog will appear. Click **Next >** to begin the installation.

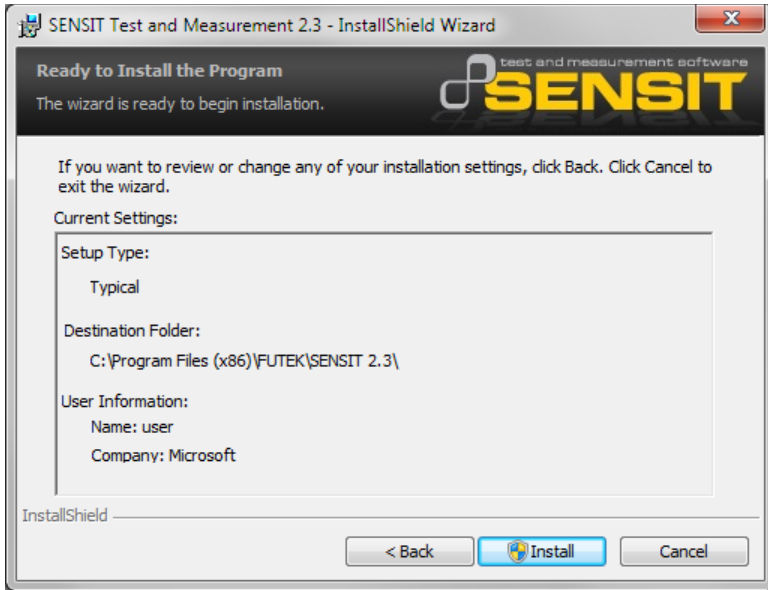


The **License Agreement** dialog will appear. Select **I accept the terms in the license agreement** and then click **Next >** to continue.

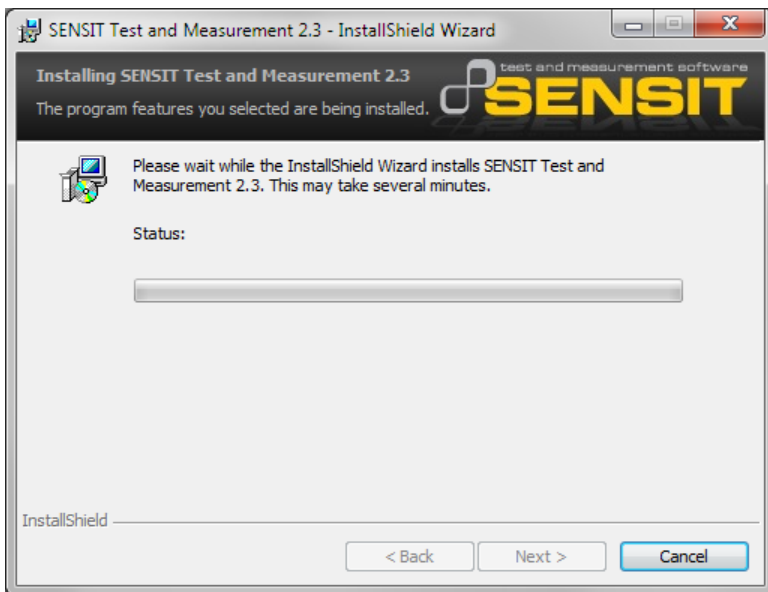


SENSIT Installation Instructions

The **Ready to Install the Program** dialog will appear.
Click **Install**.



The **Installing SENSIT Test and Measurement 2.3** dialog will appear.
Wait for the wizard to continue.

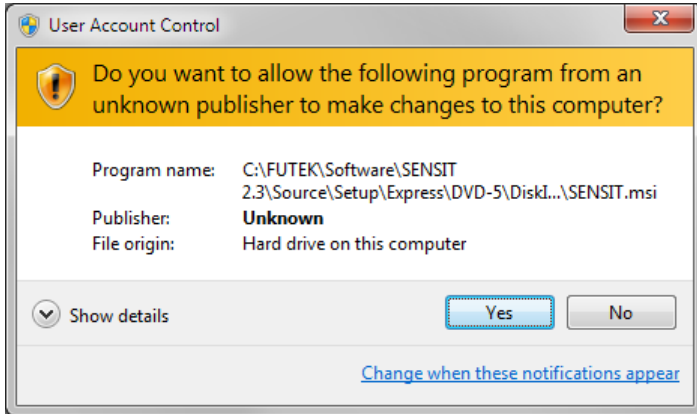


SENSIT Installation Instructions

The **User Account Control** dialog may appear depending on the Operating System.

When asked: **Do you want to allow the following program from an unknown publisher to make changes to this computer?**

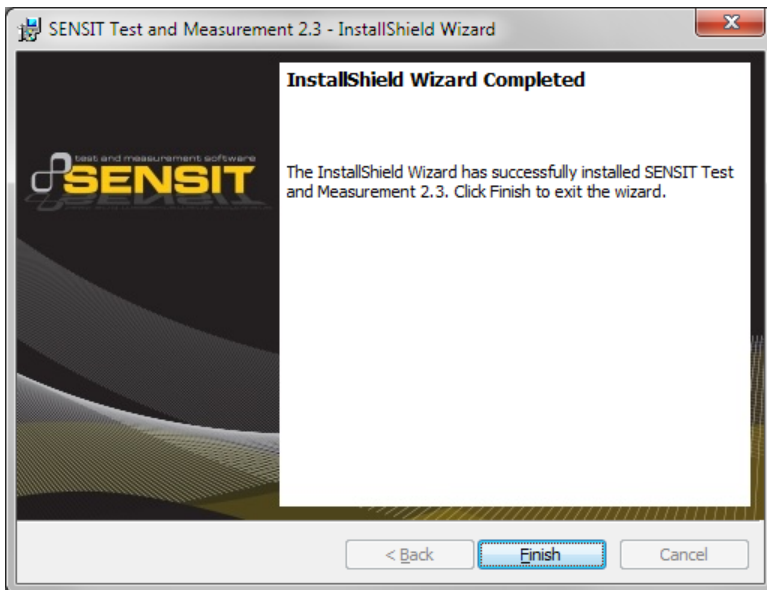
Click **Yes**.



Wait while the software is being installed. This may take a few minutes.

The **InstallShield Wizard Completed** dialog will appear.

Click **Finish** to exit the wizard.



SENSIT Installation Instructions

Release Information

FUTEK USB Software Version 2.0.0.0 Installation Instructions – Released January 2011
SENSIT USB Software Version 2.0.4000.0 Installation Instructions – Released July 2011
SENSIT Test and Measurement Version 2.1.4000.0 Installation Instructions – Released November 2011
SENSIT Test and Measurement Version 2.2.4000.0 Installation Instructions – Released April 2012
SENSIT Test and Measurement Version 2.3.4000.0 Installation Instructions – Released February 2013
SENSIT Test and Measurement Version 2.3.4001.1 Installation Instructions – Released June 2013
SENSIT Test and Measurement Version 2.3.4002.2 Installation Instructions – Released August 2013
SENSIT Test and Measurement Version 2.3.4003.3 Installation Instructions – Released January 2014

Copyright

Copyright © FUTEK Advanced Sensor Technology, Inc. 2009-2014.

Disclaimer

Neither the whole nor any part of the information contained in, or the product described in this manual, may be adapted or reproduced in any material or electronic form without the prior written consent of the copyright holder.

This product and its documentation are supplied on an as-is basis and no warranty as to their suitability for any particular purpose is either made or implied.

This document provides preliminary information that may be subject to change without notice.