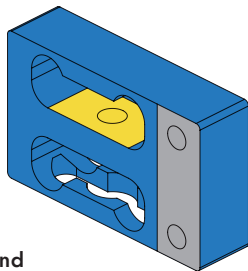
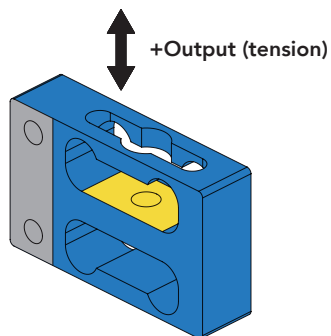


FEATURES

- Intended for high volume applications
- Easily integrates into OEM applications
- 50 to 200x Built-in overload protection
- Low Power consumption
- Exceptional nonlinearity and nonrepeatability
- Can integrate with analog VDC, mA, digital SPI, I2C, RS-232, UART output, and more

 Non-loading surface, do not contact

 Active end



 Fixed end

SPECIFICATIONS

PERFORMANCE

Nonlinearity	±0.05% of RO
Hysteresis	±0.05% of RO
Nonrepeatability	±0.05% of RO

ELECTRICAL

Rated Output (RO)	1.5 mV/V nom (0.25 lb) 2 mV/V nom (0.5 – 1 lb)
Excitation (VDC or VAC)	18 max
Bridge Resistance	1000 Ohm nom
Insulation Resistance	≥500 Mohm @ 50 VDC
Connection	#29 AWG, 4 conductor, spiral teflon cable, 6 in [152.4 mm] long
Wiring/Connector Code	WC2

MECHANICAL

Weight (approximate)	1 oz [28 g]
Safe Overload	50 lb [222.4 N]
Material	Aluminum
IP Rating	IP00

TEMPERATURE

Operating Temperature	-60 to 200°F [-50 to 93°C]
Compensated Temperature	60 to 160°F [15 to 72°C]
Temperature Shift Zero	±0.005% of RO/°F [0.01% of RO/°C]
Temperature Shift Span	±0.005% of Load/°F [0.01% of Load/°C]

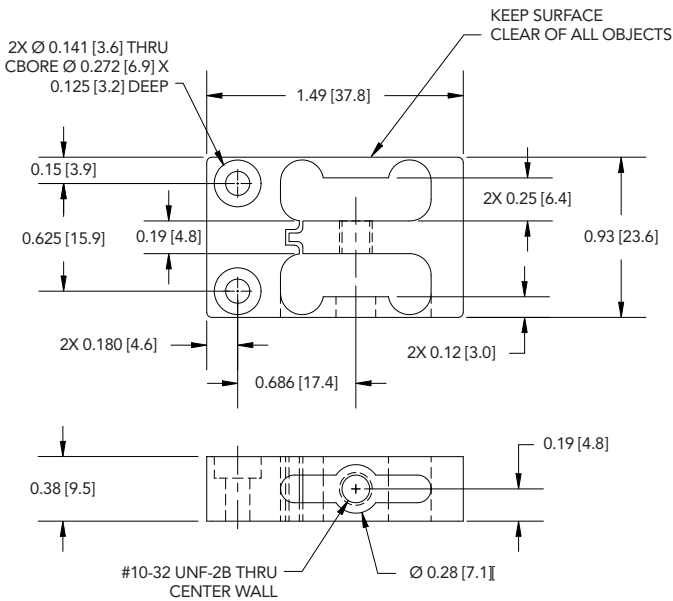
CALIBRATION

Calibration Test Excitation	10 VDC
Calibration (standard)	Certificate of Conformance
Calibration (available)	5-pt Tension and Compression
Shunt Calibration Value	200 kOhm (0.25 lb) 150 kOhm (0.5 – 1 lb)

CONFORMITY

RoHS	2015/63/EU
CE	EN55011; EN61326-1

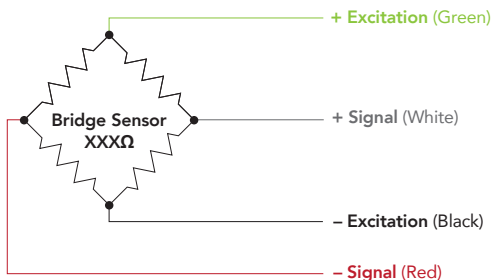
DIMENSIONS inches [mm]



WIRING CODE (WC2)

GREEN	+ EXCITATION
BLACK	- EXCITATION
WHITE	+ SIGNAL
RED	- SIGNAL

*Color code for this sensor is not FUTEK standard



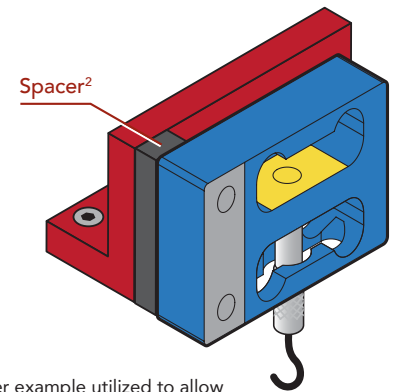
DEFLECTION

ITEM #	lb	N	Deflection (in.)	Natural Frequency (Hz)
FSH03923	0.25	1.1	0.004 [0.1 mm]	200
FSH03924	0.5	2.2	0.004 [0.1 mm]	290
FSH03925	1	4.5	0.004 [0.1 mm]	400

MOUNTING

Deflecting surfaces must be free from contact or interference. Spacers may be used to help isolate sensor from surfaces.

- Non-contact area
- Active end
- Fixed end



² Spacer example utilized to allow sensor to float and prevent contact with non-loading surfaces.



SCIGATE AUTOMATION (S) PTE LTD

No.1 Bukit Batok Street 22 #01-01 Singapore 659592
 Tel: (65) 6561 0488 Fax: (65) 6562 0588
 Email: sales@scigate.com.sg Web: www.scigate.com.sg

Business Hours: Monday - Friday 8.30am - 6.15pm

Drawing Number: F11414-A

FUTEK reserves the right to modify its design and specifications without notice. Please visit www.futek.com/salesterms for complete terms and conditions.

10 Thomas, Irvine, CA 92618 USA
 futek@futek.com

www.futek.com



RoHS



U.S. Manufacturer