

FUTEK MODEL QLA386

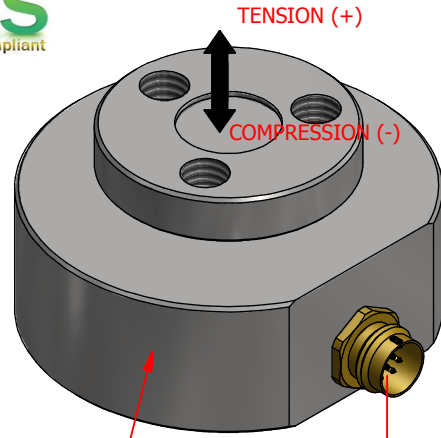
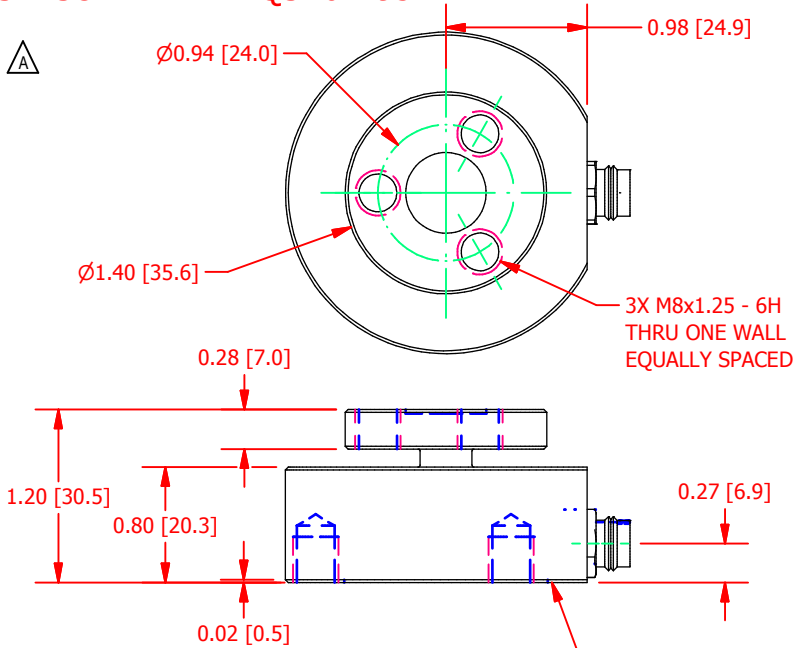
CUSTOM TENSION AND COMPRESSION LOAD CELL WITH DIGITAL OUTPUT

ITEM NUMBER: SEE SHEETS

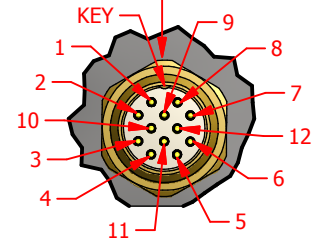
INCH [mm] | R.O.= Rated Output



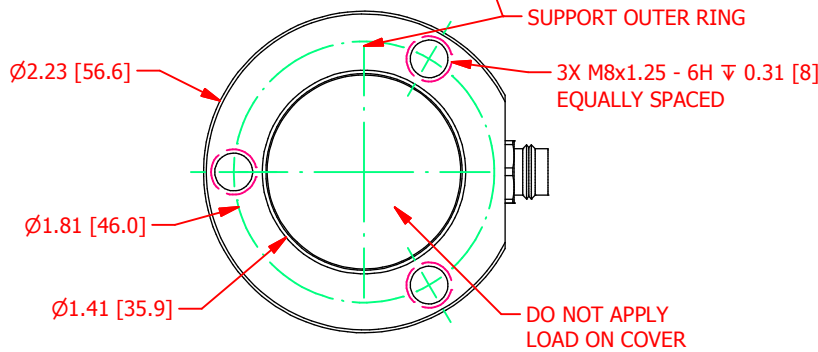
SENSOR ITEM #: QSH01793



LASER ENGRAVED
FUTEK LOGO
ITEM #
CAPACITY:
S/N:

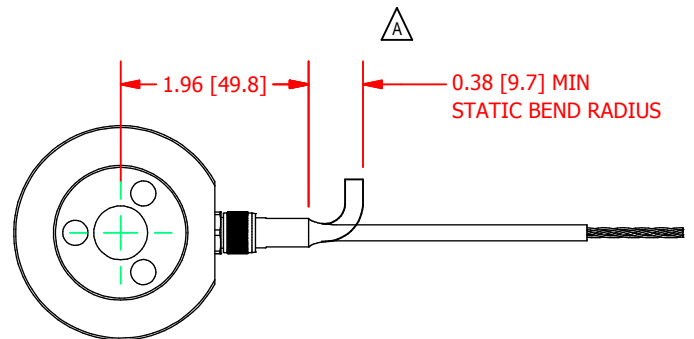


CONNECTOR CODE	
PIN #	DESIGNATION
1	GND
2	+D
3	-D
4	VBUS
5	RST (Internal Use Only)
6	Tx
7	Rx
8	PROG (Internal Use Only)
9	GND
10	N/C
11	N/C
12	N/C



SPECIFICATIONS:

OUTPUT FORMAT	8 CHARACTER ASCII
OUTPUT TYPE	FULL DUPLEX UART (RS232)
BAUD RATE (COMMUNICATION)	57600 BITS/SECOND
CAPACITY	500 lb. [2220N]
ADC SAMPLING RATE	100 SPS
SAFE OVERLOAD	150 % of R.O.
POWER SUPPLY (VDC)	5 V +/- 2% / 1 W
NONLINEARITY	±0.5% of R.O.
HYSTERESIS	±0.5% of R.O.
NONREPEATABILITY	±0.5% of R.O.
COMPENSATED TEMP.	60 to 160 °F (16 to 71 °C)
OPERATING TEMP	32 to 160 °F (0 to 71 °C)
WEIGHT (approx)	0.9 lb [408.2 g]
MATERIAL	17-4 PH S.S.
DEFLECTION	0.001 [0.0254] nom.
CONNECTOR: MICROCOM CONNECTOR, 12 PIN	
RoHS LEAD FREE	YES
ISO13485 COMPLIANCE	YES
IPC/WHMA-A-620 COMPLIANCE	YES



CUSTOMER APPROVAL- COMPANY:

OUTLINE DRAWING

This drawing is submitted solely for the information and exclusive use of the original addressee. It is not to be divulged in whole or in part, by any firm or individual without written permission from:

FUTEK
ADVANCED SENSOR TECHNOLOGY, INC.
10 THOMAS, IRVINE, CA 92618 USA
Phone: (949) 465-0900
Fax: (949) 465-0905

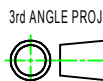
CUSTOMER APPROVAL- NAME / DATE:

STANDARD NOTES: (Unless Otherwise Specified)
ALL DIMENSIONS ARE IN INCHES
DRAWING INTERPRETATION DIMS. PER ASME-Y14.5M
REMOVE BURRS AND BREAK SHARP EDGES .005 - .015
THREADS PER HANDBOOK H-28
DIMENSIONS ARE SHOWN AFTER PLATING

ANGLE:
± 1/2°

CHAMFER:
± 5°

TOLERANCE:
.X ± 0.1"
.XX ± 0.01"
.XXX ± 0.005"



MODEL: **QLA386**

DWG No.: **FO1390-A**

DRAWN BY: R. Walker

CREATED DATE: 5/4/2015

APPROVED BY: B. FARD MOGHADDAM

APPROVED DATE: 5/8/2015

CHECKED BY:

CAGE: 1X8M6 SHEET: 1 OF 2

REVISIONS: (Refer to dwg # revision sheet)

A	5-13-15
---	---------

FUTEK MODEL QLA386

CUSTOM TENSION AND COMPRESSION LOAD CELL WITH DIGITAL OUTPUT

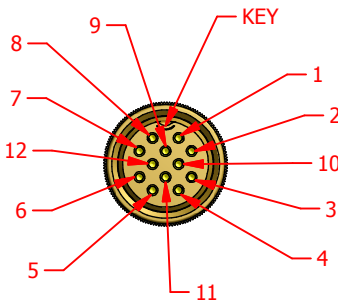
ITEM NUMBER: SEE SHEETS

INCH [mm] | R.O.= Rated Output

CABLE ITEM #: QSH01795



CONNECTOR CODE	
PIN #	DESIGNATION
1	GND (BLACK)
4	VBUS (RED)
6	Tx (GREEN)
7	Rx (WHITE)
9	GND (BLUE)
SHELL	SHIELD (360 Deg Coverage)
2, 3, 5, 8, 10, 11, 12	N/C



SCIGATE AUTOMATION (S) PTE LTD

No.1 Bukit Batok Street 22 #01-01 Singapore 659592
 Tel: (65) 6561 0488 Fax: (65) 6562 0588
 Email: sales@scigate.com.sg Web: www.scigate.com.sg
 Business Hours: Monday - Friday 8.30am - 6.15pm

CUSTOMER APPROVAL- COMPANY:

CUSTOMER APPROVAL- NAME / DATE:

REVISIONS: (Refer to dwg # revision sheet)

OUTLINE DRAWING

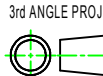
STANDARD NOTES: (Unless Otherwise Specified)

ALL DIMENSIONS ARE IN INCHES
 DRAWING INTERPRETATION DIMS. PER ASME-Y14.5M
 REMOVE BURRS AND BREAK SHARP EDGES .005 - .015
 THREADS PER HANDBOOK H-28
 DIMENSIONS ARE SHOWN AFTER PLATING

ANGLE:
± 1/2°

CHAMFER:
± 5°

TOLERANCE:
.X ± 0.1"
.XX ± 0.01"
.XXX ± 0.005"



This drawing is submitted solely for the information and exclusive use of the original addressee. It is not to be divulged in whole or in part, by any firm or individual without written permission from:

FUTEK
 ADVANCED SENSOR TECHNOLOGY, INC.
 10 THOMAS, IRVINE, CA 92618 USA
 Phone: (949) 465-0900
 Fax: (949) 465-0905

MODEL: **QLA386** DWG No.: **FO1390-A**
 DRAWN BY: R. Walker CREATED DATE: 5/4/2015
 APPROVED BY: B. FARID MOHAMMAD APPROVED DATE: 5/8/2015
 CHECKED BY: CAGE: 1X8M6 SHEET: 2 OF 2