

FUTEK MODEL LSB352

STOCK NUMBER: SEE CHART

OVERLOAD PROTECTION S-BEAM LOAD CELL W/ INTEGRATED AMPLIFIER

INCH [mm] | R.O.= Rated Output

WIRING CODE			
POWER	GROUND	Signal	-Return
RED	BLACK	WHITE	BLUE
Shield			
Floating			

**SCIENCE
GATE**
Your Automation Partner



SCIGATE AUTOMATION (S) PTE LTD

No.1 Bukit Batok Street 22 #01-01 Singapore 659592

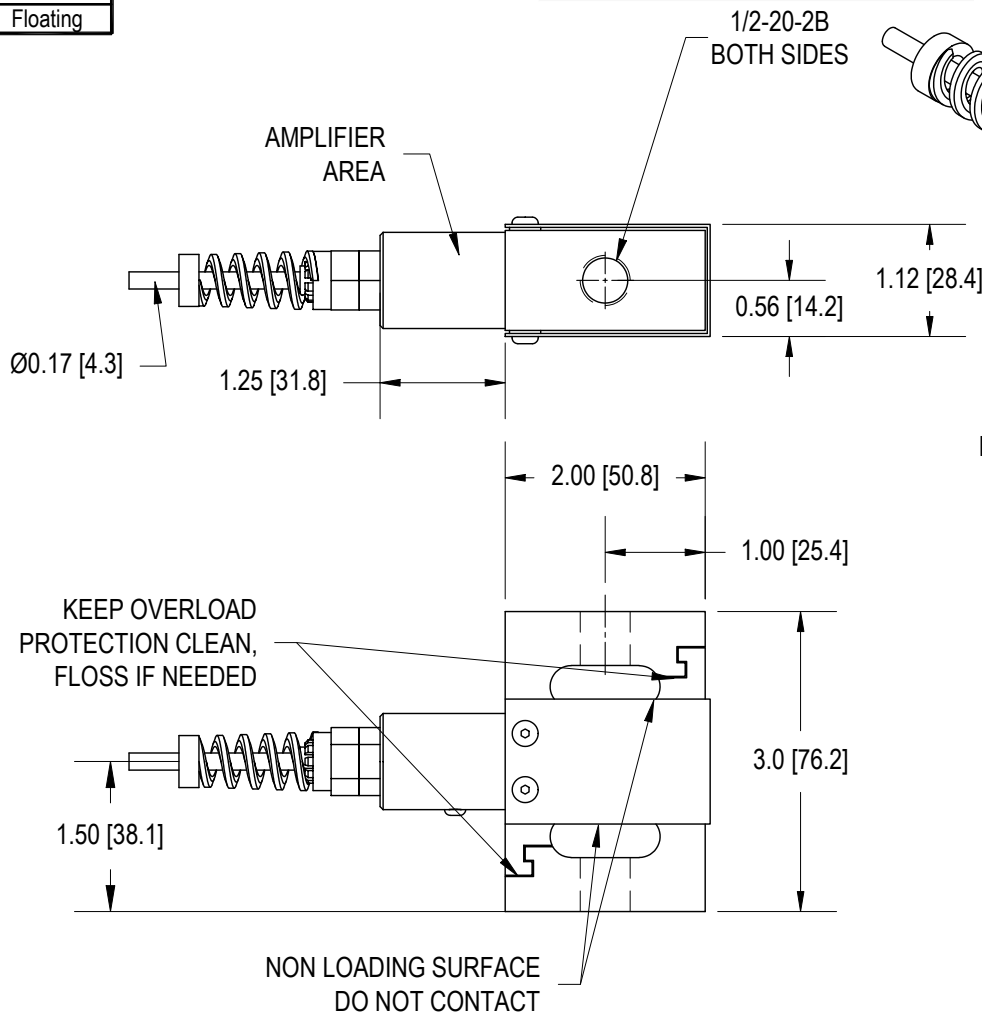
Tel: (65) 6561 0488

Fax: (65) 6562 0588

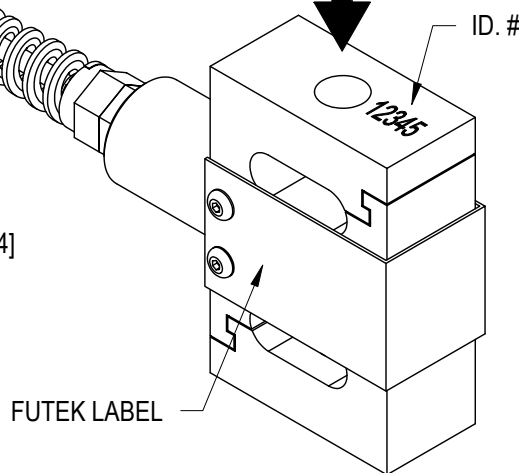
Email: sales@scigate.com.sg

Web: www.scigate.com.sg

Business Hours: Monday - Friday 8.30am - 6.15pm



+OUTPUT
(TENSION)



STK#	CAPACITIES	
	lb	N
QSH00992	500	2224
QSH00993	1000	4448

SPECIFICATIONS:

RATED OUTPUT

SAFE OVERLOAD

ZERO BALANCE

EXCITATION

NONLINEARITY

HYSTERESIS

NONREPEATABILITY

TEMP. SHIFT ZERO

TEMP. SHIFT SPAN

COMPENSATED TEMP.

OPERATING TEMP.

MATERIAL

4-20 mA (Tension Direction)

500% of R.O.

±2% of R.O.

13-30 VDC @ 42 mA min

±0.1% of R.O.

±0.1% of R.O.

±0.05% of R.O.

±0.01% of R.O./°F [0.018% of R.O./°C]

±0.01% of LOAD/°F [0.018% of LOAD/°C]

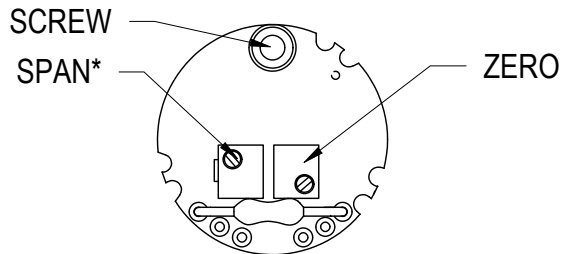
32 to 158°F [0 to 70°C]

-40 to 185°F [-40 to 85°C]

17-4 PH S.S.

CABLE: #28 AWG, 6 Conductor, Shielded Polyurethane Cable 20 ft [6 m] Long

INTERNAL AMPLIFIER



*SPAN- FACTORY SET, IF ADJUSTED
VOIDS CALIBRATION RESULTS

MATERIAL:

—

HEAT TREATMENT - FINISH:

—

REVISIONS: (Refer to dwg # revision sheet)

A -

OUTLINE DRAWING

STANDARD NOTES: (Unless Otherwise Specified)

- ALL DIMENSIONS ARE IN INCHES
- DRAWING INTERPRETATION DIMS. PER ASME-Y14.5M
- REMOVE BURRS AND BREAK SHARP EDGES .005 - .015
- THREADS PER HANDBOOK H-28
- DIMENSIONS ARE SHOWN AFTER PLATING

3rd ANGLE PROJ.



ANGLE:

±1/2°

CHAMFER:

±5°

TOLERANCE:

.X ±0.1

.XX ±0.01

.XXX ±0.005

This drawing is submitted solely for the information and exclusive use of the original addressee. It is not to be divulged in whole or in part, by any firm or individual without written permission from:

CAGE: 1X8M6

MODEL: **LSB352-SPECIAL**

DRAWN BY: **R. WALKER**

APPROVED BY: **J. VARGAS**

FUTEK
ADVANCED SENSOR TECHNOLOGY, INC.

10 THOMAS
IRVINE, CA 92618 USA
Phone: (949) 465-0900
Fax: (949) 465-0905

DWG No.: **FO1191**

CHECKED BY: -

DATE: **Sept 26, 2007**