

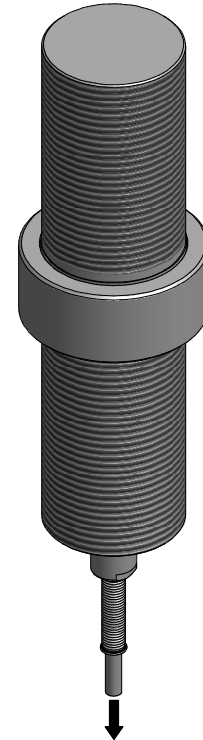
FUTEK MODEL LCM550-SP

THREADED ROD LOAD CELL WITH AXIAL CABLE EXIT

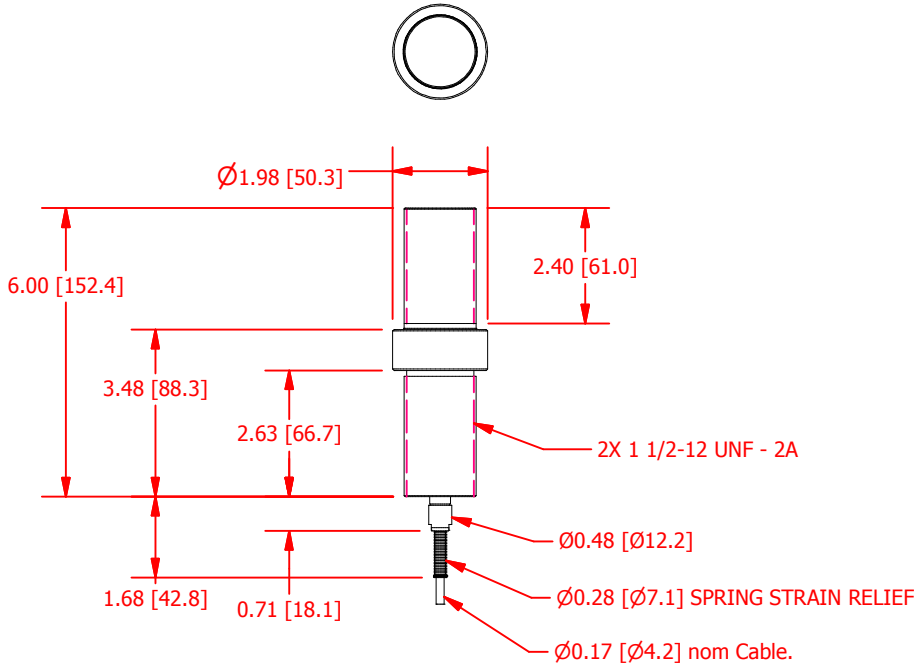
ITEM NUMBER: QSH01588

INCH [mm] | R.O.= Rated Output

WIRING CODE			
+Excitation	-Excitation	+Signal	-Signal
RED Pin A	BLACK Pin B	GREEN Pin C	WHITE Pin D
+SENSE	-SENSE	GROUND	
ORANGE Pin E	BLUE Pin F	FLOATING	



TO 8 PIN RECEPTACLE



SPECIFICATIONS:

RATED OUTPUT	1 mV/V nom.
CAPACITY	5000 lb [22.24kN]
SAFE OVERLOAD	300% of R.O.
ZERO BALANCE	±5% of R.O.
EXCITATION (VDC OR VAC)	18 MAX
BRIDGE RESISTANCE	350 Ω nom
NONLINEARITY	±0.5% of R.O.
HYSTERESIS	±0.5% of R.O.
NONREPEATABILITY	±0.1% of R.O.
TEMP. SHIFT ZERO	±0.005% of R.O./°F (±0.009 of R.O./°C)
TEMP. SHIFT SPAN	±0.005% of LOAD/°F (±0.009 of LOAD/°C)
COMPENSATED TEMP.	60 to 160 °F (16 to 71 °C)
OPERATING TEMP	-45 to 200 °F (-43 to 93 °C)
WEIGHT (approx)	3.1 lb
SENSOR IP RATING	IP67

A CABLE: 28 Awg 6 Conductor Braided Shielded Polyurethane Cable, Axial Cable Exit Out of the Bottom, 1 ft Long with 8 Pin Binder Male Plug 99 5171 00 08 (IP67 rated)



SCIGATE AUTOMATION (S) PTE LTD

No.1 Bukit Batok Street 22 #01-01 Singapore 659592
 Tel: (65) 6561 0488 Fax: (65) 6562 0588
 Email: sales@scigate.com.sg Web: www.scigate.com.sg

Business Hours: Monday - Friday 8.30am - 6.15pm

CUSTOMER APPROVAL- COMPANY:

CUSTOMER APPROVAL- NAME / DATE:

REVISIONS: (Refer to dwg # revision sheet)

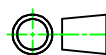
A	4/27/2012

OUTLINE DRAWING

STANDARD NOTES: (Unless Otherwise Specified)

ALL DIMENSIONS ARE IN INCHES
 DRAWING INTERPRETATION DIMS. PER ASME-Y14.5M
 REMOVE BURRS AND BREAK SHARP EDGES .005 - .015
 THREADS PER HANDBOOK H-28
 DIMENSIONS ARE SHOWN AFTER PLATING

3rd ANGLE PROJ.



ANGLE:
± 1/2°

CHAMFER:
± 5°

TOLERANCE:
.X ± 0.1"
.XX ± 0.01"
.XXX ± 0.005"

This drawing is submitted solely for the information and exclusive use of the original addressee. It is not to be divulged in whole or in part, by any firm or individual without written permission from:

FUTEK
 ADVANCED SENSOR TECHNOLOGY, INC.

10 THOMAS, IRVINE, CA 92618 USA
 Phone: (949) 465-0900
 Fax: (949) 465-0905

MODEL: LCM550-SP	DWG No.: FO1313-A
DRAWN BY: R. Walker	CREATED DATE: 3/5/2012
APPROVED BY: J. Vargas	APPROVED DATE: 3/6/2012
CHECKED BY:	CAGE: 1X8M6 SHEET: 1 OF 1