

# FUTEK MODEL LLB250

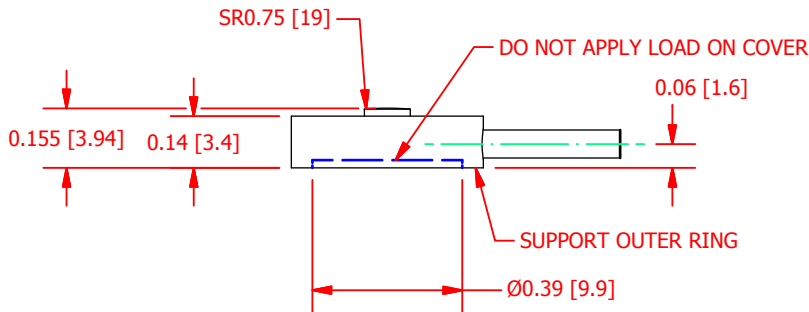
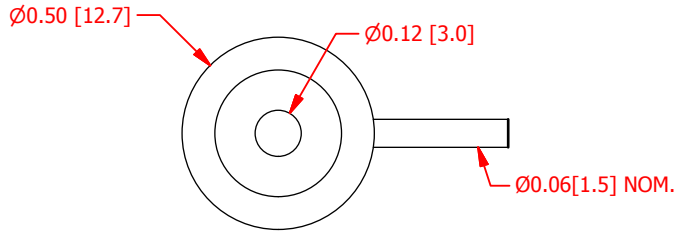
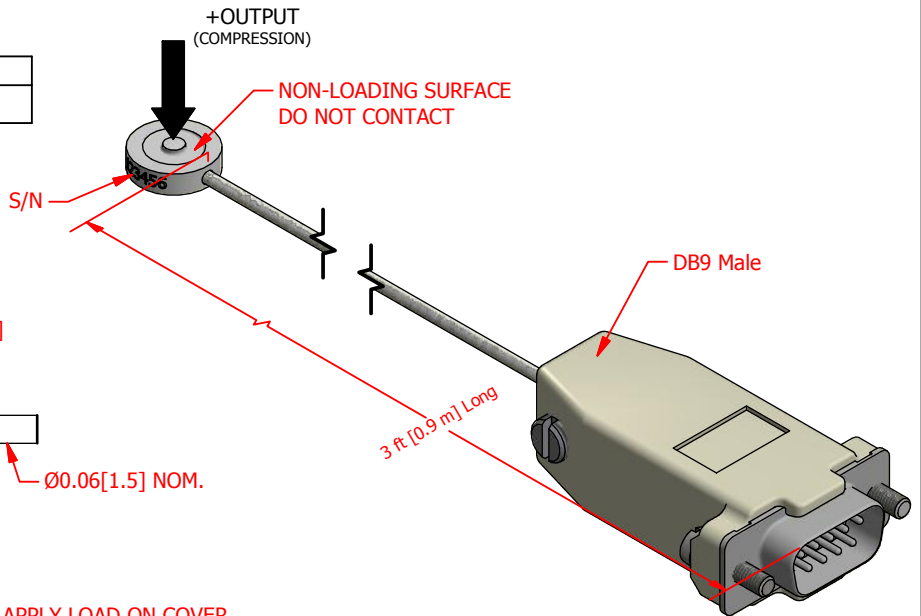
ITEM NUMBER: QSH01752

## SUBMINIATURE LOAD BUTTON w/ TEDS (IEEE1451.4) RECOGNITION AND DB9 MALE

INCH [mm] | R.O.= Rated Output

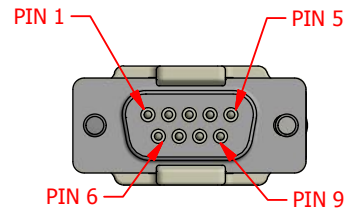
WIRING CODE (CC15)

+ Excitation	- Excitation	+ Signal	- Signal	
PIN 2	PIN 7	PIN 1	PIN 6	▲
Shield	TEDS DATA	TEDS GND	+ Sense	-Sense
FLOATING	PIN 5	PIN 9	PIN 4	PIN 8



### SPECIFICATIONS

RATED OUTPUT	1.5mV/V Nom.
CAPACITY	100 lb [444 N]
SAFE OVERLOAD	150% of R.O.
ZERO BALANCE	±10% of R.O.
EXCITATION (VDC OR VAC)	7 MAX
BRIDGE RESISTANCE	350 Ω nom
NONLINEARITY	±0.5% of R.O. (BFSL) ±1% of R.O. (END POINT)
HYSTERESIS	±1% of R.O.
NONREPEATABILITY	±0.5% of R.O.
TEMP. SHIFT ZERO	±0.05% of R.O./°F (±0.09 of R.O./°C)
TEMP. SHIFT SPAN	±0.02% of LOAD/°F (±0.036 of LOAD/°C)
COMPENSATED TEMP.	60 to 90 °F (16 to 32 °C)
OPERATING TEMP	-40 to 185 °F (-40 to 85 °C)
WEIGHT (approx)	0.1 lb
MATERIAL	17-4 PH S.S
CABLE	Braided Shielded Cable, 3 ft Long
CONNECTOR	DB9 MALE



DB9 FRONT SIDE VIEW  
SEE WIRING CODE TABLE FOR PIN OUTS

**SCIENCE GATE**  
Your Automation Partner



SCIGATE AUTOMATION (S) PTE LTD

No.1 Bukit Batok Street 22 #01-01 Singapore 659592  
Tel: (65) 6561 0488 Fax: (65) 6562 0588  
Email: sales@scigate.com.sg Web: www.scigate.com.sg

Business Hours: Monday - Friday 8.30am - 6.15pm

CUSTOMER APPROVAL- COMPANY:

CUSTOMER APPROVAL- NAME / DATE:

REVISIONS: (Refer to dwg # revision sheet)

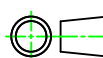
A	6/17/14
---	---------

## OUTLINE DRAWING

STANDARD NOTES: (Unless Otherwise Specified)

ALL DIMENSIONS ARE IN INCHES  
DRAWING INTERPRETATION DIMS. PER ASME-Y14.5M  
REMOVE BURRS AND BREAK SHARP EDGES .005 - .015  
THREADS PER HANDBOOK H-28  
DIMENSIONS ARE SHOWN AFTER PLATING

3rd ANGLE PROJ.



ANGLE:  
± 1/2°

CHAMFER:  
± 5°

TOLERANCE:  
.X ± 0.1"  
.XX ± 0.01"  
.XXX ± 0.005"

This drawing is submitted solely for the information and exclusive use of the original addressee. It is not to be divulged in whole or in part, by any firm or individual without written permission from:

**FUTEK**  
ADVANCED SENSOR TECHNOLOGY, INC.  
10 THOMAS, IRVINE, CA 92618 USA  
Phone: (949) 465-0900  
Fax: (949) 465-0905

MODEL: <b>LLB250</b>	DWG No.: <b>FO1371-A</b>
DRAWN BY: <i>E. Pano</i>	CREATED DATE: 6/12/2014
APPROVED BY: <i>R. Walker</i>	APPROVED DATE: 6/12/2014
CHECKED BY:	CAGE: 1X8M6 SHEET: 1 OF 1