

ACCESSORIES

Drawing Number: FI1176-A

MATERIAL: HARDENED STEEL

HARDENED WASHERS

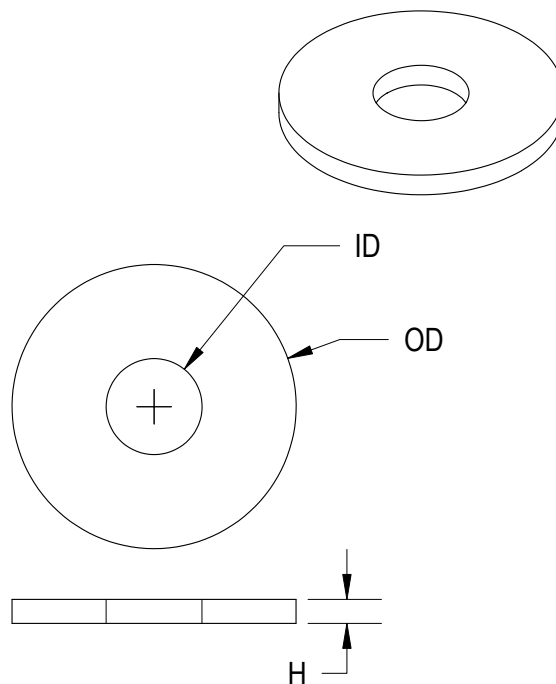
FOR LTH SERIES (Previously L2760 series)

TOP WASHER

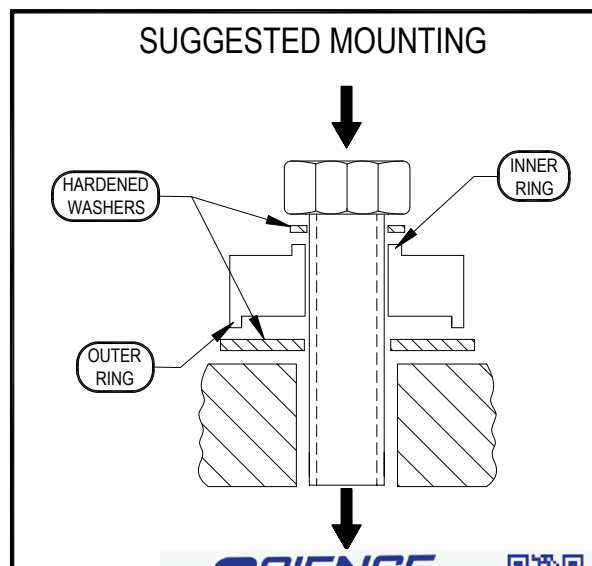
MODEL	STK#	ID	OD	H
LTH300	MCP00984	0.137 (1/8)	0.460	0.06
	MCP00985	0.200 (3/16)		
	MCP00986	0.262 (1/4)		
	MCP00987	0.325 (5/16)		
	MCP00988	0.387 (3/8)		
LTH350	MCP00990	0.137 (1/8)	0.835	0.120
	MCP00991	0.200 (3/16)		
	MCP00992	0.262 (1/4)		
	MCP00993	0.325 (5/16)		
	MCP00994	0.387 (3/8)		
	MCP00995	0.450 (7/16)		
	MCP00996	0.512 (1/2)		
	MCP00997	0.575 (9/16)		
LTH400	MCP00998	0.637 (5/8)	1.070	0.120
	MCP01627	0.137 (1/8)		
	MCP01628	0.200 (3/16)		
	MCP01629	0.262 (1/4)		
	MCP01630	0.325 (5/16)		
	MCP01631	0.387 (3/8)		
	MCP01632	0.450 (7/16)		
	MCP01633	0.512 (1/2)		
LTH500	MCP01634	0.575 (9/16)	1.980	0.180
	MCP01635	0.637 (5/8)		
	MCP01002	0.137 (1/8)		
	MCP01003	0.200 (3/16)		
	MCP01004	0.262 (1/4)		
	MCP01005	0.325 (5/16)		
	MCP01006	0.387 (3/8)		
	MCP01007	0.450 (7/16)		
	MCP01008	0.512 (1/2)		
	MCP01009	0.575 (9/16)		
	MCP01010	0.637 (5/8)		
	MCP01011	0.772 (3/4)		
	MCP01012	0.897 (7/8)		
	MCP01013	1.022 (1)		
	MCP01014	1.272 (1 1/4)		

BOTTOM WASHER

LTH300	MCP00989	0.400	0.980	0.06
LTH350	MCP00999	0.650	1.480	0.120
LTH400	MCP01000	0.650	1.980	0.120
LTH500	MCP01015	1.300	2.980	0.180



NOTE: WHEN SELECTING WASHERS CHOOSE PROPER MODEL# & ID FOR TOP WASHER AND CORRECT MODEL# FOR BOTTOM WASHER



SCIGATE AUTOMATION (S) PTE LTD

No.1 Bukit Batok Street 22 #01-01 Singapore 659592

Tel: (65) 6561 0488

Email: sales@scigate.com.sg

Fax: (65) 6562 0588

Web: www.scigate.com.sg

Business Hours: Monday - Friday 8.30am - 6.15pm

FUTEK
ADVANCED SENSOR TECHNOLOGY, INC.

This drawing is submitted solely for the information and exclusive use of the original addressee. It is not to be divulged in whole or in part, by any firm or individual without written permission from FUTEK

10 THOMAS
IRVINE, CA 92618 USA
1-800-23-FUTEK (38835)

INTERNET:
<http://www.futek.com>