

# FUTEK MODEL ZAC120

Drawing Number: FI1219-A

INCH [mm] | Material: Aluminum



SCIGATE AUTOMATION (S) PTE LTD

No.1 Bukit Batok Street 22 #01-01 Singapore 659592

Tel: (65) 6561 0488

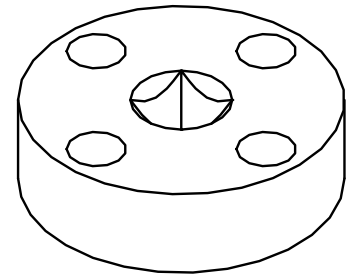
Fax: (65) 6562 0588

Email: sales@scigate.com.sg

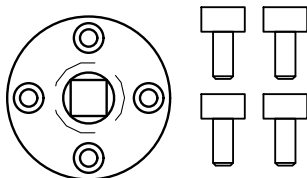
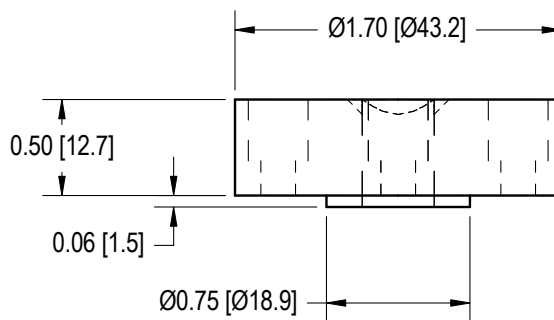
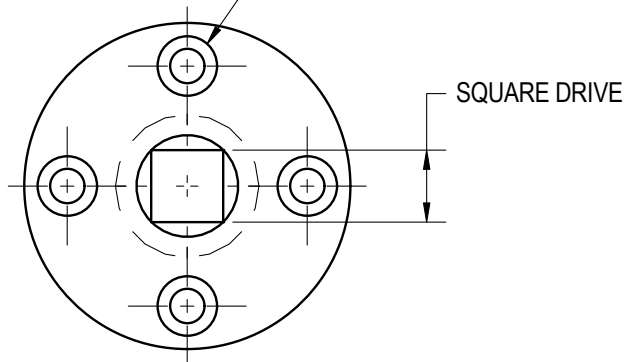
Web: www.scigate.com.sg

Business Hours: Monday - Friday 8.30am - 6.15pm

## FEMALE SQUARE DRIVE ADAPTER FOR FUTEK MODEL TFF400, TDD400 AND TDF400

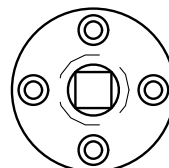


4 X Ø0.18 [4.6] THRU  
C'BORE Ø0.31 [7.9] X 0.32 [8.1] DEEP  
EQUALLY SPACED ON 1.25 [31.8] B.C.D.

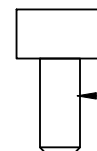


PACKAGE INCLUDES ONE  
ADAPTER AND 4 SCREWS

PACKAGE STOCK#	SQUARE DRIVE
FSH02361	1/4"
FSH02362	3/8"



ADAPTER STOCK#	SQUARE DRIVE	MAX LOAD
MCP00548	1/4"	1500 in-oz
MCP00550	3/8"	750 in-lb



#8-32 x 3/8L  
SOCKET HEAD  
CAP

SCREW STOCK#  
GOD00071

**FUTEK**  
ADVANCED SENSOR TECHNOLOGY, INC.

This drawing is submitted solely for the information and exclusive use of the original addressee. It is not to be divulged in whole or in part, by any firm or individual without written permission from FUTEK  
CAGE CODE # 1X8M6

10 THOMAS  
IRVINE, CA 92618 USA  
1-800-23-FUTEK (38835)

INTERNET:  
<http://www.futek.com>