

# CDIT-2 Stainless Steel

## Low Profile Compression Load Cell

TYPE: CDIT-2

### Features

- Ranges 250kg to 100te
- Stainless Steel, fully welded construction
- High Stability
- Low Height
- Environmentally Sealed to IP68

### Typical Applications

- Process Measurement & Control
- Automotive Testing
- Low profile weighing systems

### Description

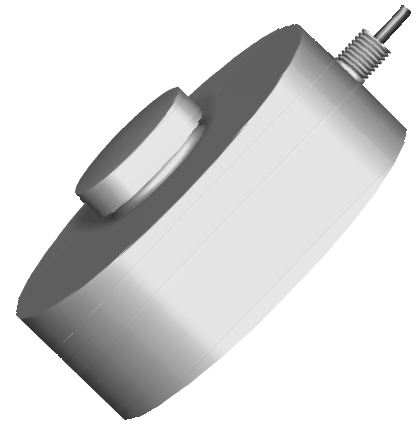
The CDIT-2 series of Load Cells have been designed for a wide range of force measurement and weighing applications where space is limited.

The CDIT-2 is constructed from stainless steel and has a fully welded construction, offering a high level of corrosion resistance for use in harsh environments.

This range of load cells is available with ranges covering 0-250kg to 0-100te.

There are many applications suited to the CDIT-2, including restricted height weighing applications, general force measurements and press calibration.

LCM Systems can provide the CDIT-2 on its own or combined with any of our instrumentation range, to offer a more complete package. Please consult our technical department for any advice required on suitable instrumentation solutions.

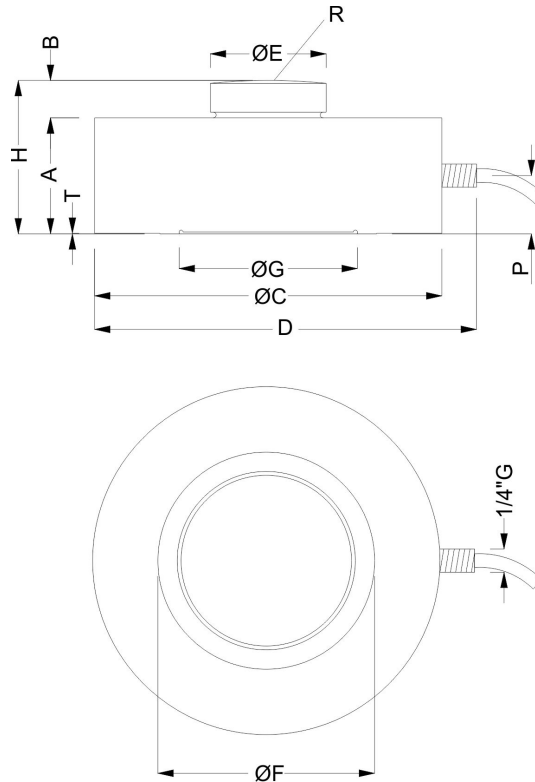


### Specification

Rated Load (FSO):	250, 500, 1000, 2500, 5000, 7500kg 10, 15, 20, 30, 50, 75, 100te	
Overload Range:	150% FSO	
Ultimate Breaking Load:	>300% FSO	
Maximum Transverse Load:	50% FSO	
Output:	2mV/V ( $\pm 0.1\%$ )	
Zero Balance:	$\leq \pm 1\%$ FSO	
Accuracy:	$\leq \pm 0.03\%$ FSO	
Non-Repeatability:	$\leq \pm 0.01\%$ FSO	
Transverse Load Effect (at 10% FSO):	$\leq \pm 0.03\%$ FSO	
Excitation Voltage:	10vdc recommended (18vdc maximum)	
Input Resistance:	700 $\Omega \pm 3\Omega$	
Output Resistance:	700 $\Omega \pm 3\Omega$	
Insulation Resistance:	>5G $\Omega$ @ 50vdc	
Compensated Temperature Range:	-10 to +40 °C	
Operating Temperature Range:	-20 to +70 °C	
Storage Temperature Range:	-20 to +80 °C	
Zero Temperature Coefficient:	$\leq \pm 0.005\%$ FSO/°C	
Span Temperature Coefficient:	$\leq \pm 0.003\%$ FSO/°C	
Environmental Protection Level:	IP68	
Weight (load cell only):	250kg to 10te	1.2kg
	15te	2.0kg
	20te to 30te	3.8kg
	50te to 100te	9.4kg

## Mechanical Dimensions

All dimensions in millimeters



Unit 15,  
Newport Business Park  
Barry Way, Newport,  
Isle of Wight,  
PO30 5GY  
United Kingdom  
Tel: +44 (0) 1983 249264  
Fax: +44 (0) 1983 249266  
sales@lcmsystems.com

Due to continual product development, LCM Systems Ltd. reserves the right to alter product specifications without prior notice.

Issue date: 17/11/2011

	RATED LOAD			
	250kg to 10te	15te	20te to 30te	50te to 100te
A	32	35	40	60
B	12	13	14	20
ØC	Ø82	Ø100	Ø126	Ø165
D	93	115	137	180
ØE	Ø22	Ø28	Ø35	Ø60
ØF	Ø60	Ø70	Ø92	Ø115
ØG	Ø52.3	Ø57.3	Ø77.3	Ø92.3
H	44	48	54	80
R	50	65	160	300
T	0.3	0.3	0.5	1
P	14	14	14	28



SCIGATE AUTOMATION (S) PTE LTD

No.1 Bukit Batok Street 22 #01-01 Singapore 659592

Tel: (65) 6561 0488

Fax: (65) 6562 0588

Email: sales@scigate.com.sg

Web: www.scigate.com.sg

Business Hours: Monday - Friday 8.30am - 6.15pm

[www.lcmsystems.com](http://www.lcmsystems.com)

**LCM SYSTEMS**  
Solutions in Load Cell Technology