

Pro-face

by **Schneider** Electric

Flat Panel Monitor

FP5000 SERIES

universal



IP67F

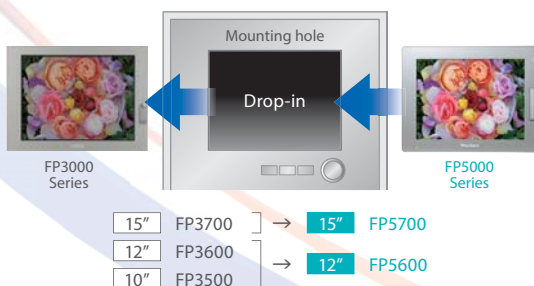
Front-side
USB

0~60°C

Industrial display supporting latest operation concepts

Improve operation efficiency by simply upgrading your displays

Sharing the panel cut out dimension with the FP3000 Series, the FP5000 Series is the natural choice for upgrading your system. Automatic resolution and brightness adjustment eases upgrade and increase operation efficiency.



Benefit from latest multi-touch operation support

Supporting latest gesture operations is key to more intuitive user guidance and also promotes less unintended operations. Applying proven resistive touch technology, compromises like choice of gloves or installation environment have not to be made.



Scroll

Swipe

Pinch

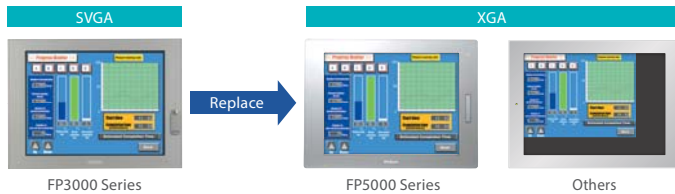
Two-point touch

etc...

Features

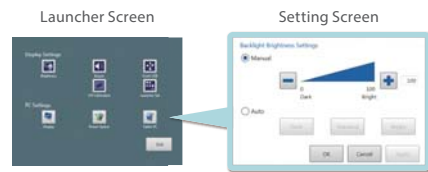
Automatic resolution adjustment

The resolution scalar function assures best display space usage regardless of PC resolution setting.



Easy display setting

Brightness and other settings can be configured from the Launcher screen to ensure optimal performance.



Specifications

		FP5700TPD (PFXFP5700TPD)	FP5600TPD (PFXFP5600TPD)
Display Type		TFT Color LCD	
Display Size		15"	12.1"
Resolution		1,024 x 768 pixels (XGA)	
Display Colors		16 million colors For details about display colors, refer to the manual for your screen editing software.	
Touch Panel Type		Resistive film (analog, multi-touch)	
Backlight		White LED (Not user replaceable. When replacement is required, contact your local distributor.)	
Touch Panel Interface		USB 2.0 (Type B) x 1	
Interface	USB (Type A)	Connector: USB 2.0 (Type A) x 1, Power Supply Voltage: 5 Vdc \pm 5% Maximum Current Supplied: 500 mA, Maximum Transmission Distance: 5 m (16.4 ft)	
	Video	DVI-D 24 pin (socket) x 1, Maximum Transmission Distance 5 m (16.4 ft)	
	Rated Input Voltage	12 to 24 Vdc	
Power Consumption		Primary power supply (including power loss): Max. 21W	Primary power supply (including power loss): Max. 17W
In-Rush Current		30 A or less	
Surrounding Air Temperature		0 to 60°C (32 to 140°F)	
Structure		IP65F, IP67F, Type1	
Weight Approx.		5.2 kg (11.5 lb) or less	3.9 kg (8.6 lb) or less
External Dimensions		W397 x H296 x D67 mm (W15.6 x H11.7 x D2.64 in)	W315 x H241 x D67 mm (W12.4 x H9.49 x D2.64 in)
Panel Cut Dimensions		W383.5 x H282.5 mm (W15.1 x H11.12 in) (Same as FP3700 [no keypad])	W301.5 x H227.5 mm (W11.87 x H8.96 in) (Same as FP3500 and FP3600)

Pro-face IPC offers

PE4000B Series

Highly compact IPC empowers your applications.



PS4000 Series

Offers extensive connectivity; highperformance, energy efficient processor options; and quick and easy memory expansion.



WARNING

HAZARD OF OPERATOR INJURY, OR UNINTENDED EQUIPMENT DAMAGE

Before operating any of these products, be sure to read all related manuals thoroughly.

Failure to follow these instructions can result in death, serious injury or unintended equipment damage.

- For printing purposes, the colors in this catalog may differ from those of the actual unit.
- Actual user screens may differ from the screens shown here.
- Electric equipment should be installed, operated, serviced, and maintained only by qualified personnel. No responsibility is assumed by Digital for any consequences arising out of the use of this material.
- All product names used in this catalog are the registered trademarks or trademarks of their respective companies.
- All information contained in this catalog is subject to change without notice.



SCIGATE AUTOMATION (S) PTE LTD

No 1 Bukit Batok Street 22 #01-01 Singapore 659592
Tel: (65) 6561 0488 Fax: (65) 6561 0588
Email: sales@scigate.com.sg Web: <https://scigate.com.sg/>

Business Hours: Monday - Friday 8:30AM - 6:15PM



Pro-face
by Schneider Electric

Visit our website for more information.
www.proface.com

Global Headquarters
Digital Electronics Corporation
[JAPAN] Tel: +81-(0)6-6208-3133

[AUSTRALIA] Tel: +61 (0)3 9550 7396
[DENMARK] Tel: +45 70 22 01 22
[GERMANY] Tel: +49 (0)212 258 260
[ITALY] Tel: +39 0362 59 96 1
[SOUTH KOREA] Tel: +82-(0)2-2630-9850
[SWITZERLAND] Tel: +41 (0)43 343 7272
[SINGAPORE] Tel: +65-6832-5533

North/South American Headquarters
Pro-face America, Inc.
[U.S.A.] Tel: +1-734-477-0600

[AUSTRIA] Tel: +43 7236 3343 620
[ENGLAND] Tel: +44 (0)2476 511288
[INDIA] Tel: +91 80 4333 3540
[POLAND] Tel: +48 22 465 66 62
[SPAIN] Tel: +34 (0)93 846 07 45
[TAIWAN] Tel: +886-(0)2-2657-1121

European Headquarters
Pro-face Europe B.V.
[THE NETHERLANDS] Tel: +31 (0)23 55 44 099

[CHINA] Tel: +86-(0)21-6361-5175
[FRANCE] Tel: +33 (0)1 60 21 22 91
[INDONESIA] Tel: +62 21 750 4496
[RUSSIA] Tel: +7 (812)336 47 06
[SWEDEN] Tel: +46 46 540 90 70
[THAILAND] Tel: +66-(0)2-617-5678