

Pro-face

by Schneider Electric

Remote Monitoring Software for Mobile Pro-face Remote HMI

mobility



Applications

* Requires a Wireless Router.

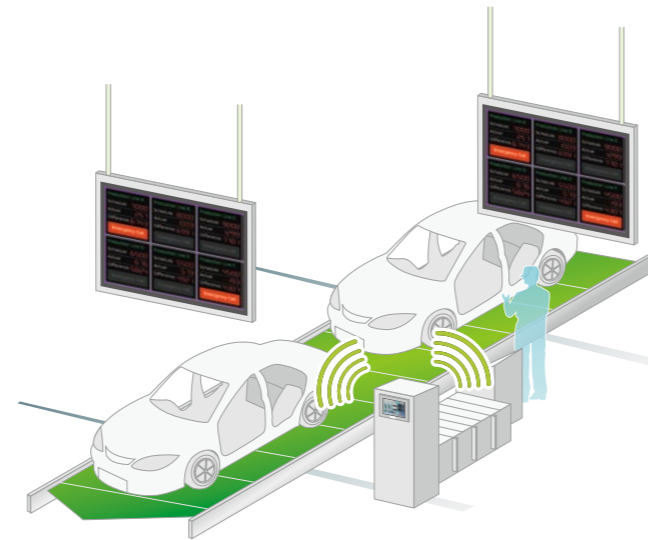
Save Time with Remote Troubleshooting

Confirm the cause of an alarm directly with your mobile device and see if the machine can be put back into operation without going on site. Operate HMI screens on any Pro-face Remote HMI enabled smart device as well as Windows software.



Wireless Andon System

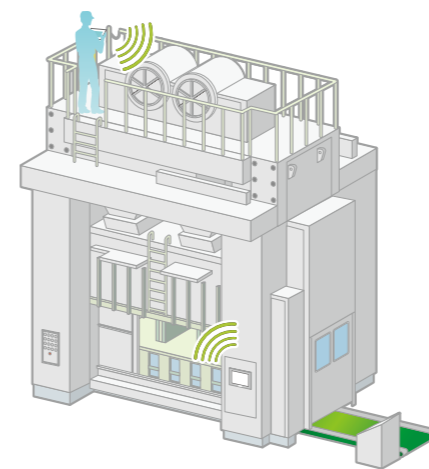
Wireless Andon system reduces time and work for installation, and can be installed anywhere. No PLC programming is necessary. PC-based alarm display can easily be implemented.



Run Large Size Equipment More Flexibly

By turning your mobile device into a portable HMI, large size equipment can be handled more easily and economically. Be at the spot of concern without the need of a secondary worker for operation.

* Please check equipment status and maintain conditions for machine safety to avoid unintended equipment operation.



Streamline Processes and Improve Operation

Mobile tasks such as picking or utility inspections do particular benefit from the functionality and the concept of using standard mobile devices with a flexible interface.

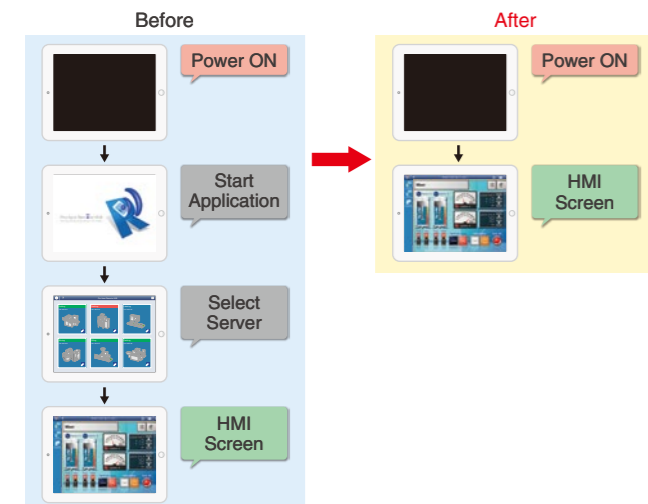


Features

Auto Start

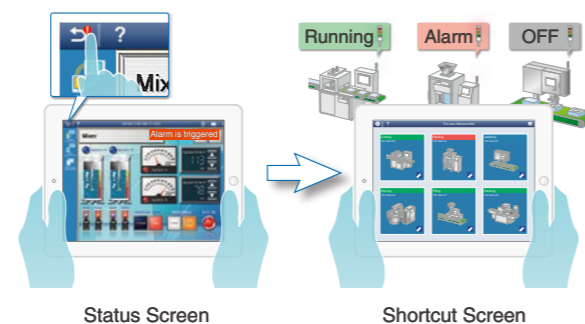
As soon as the power is turned on, it indicates User-specified display, right from start-up.

New



Alarm Monitor Function

An overview screen shows the status of each piece of equipment to reduce time for identifying faulty systems and further reduce downtime and associated costs. Each display has a status bar. Touch the alarm icon to confirm the alarm status on the overview screen.

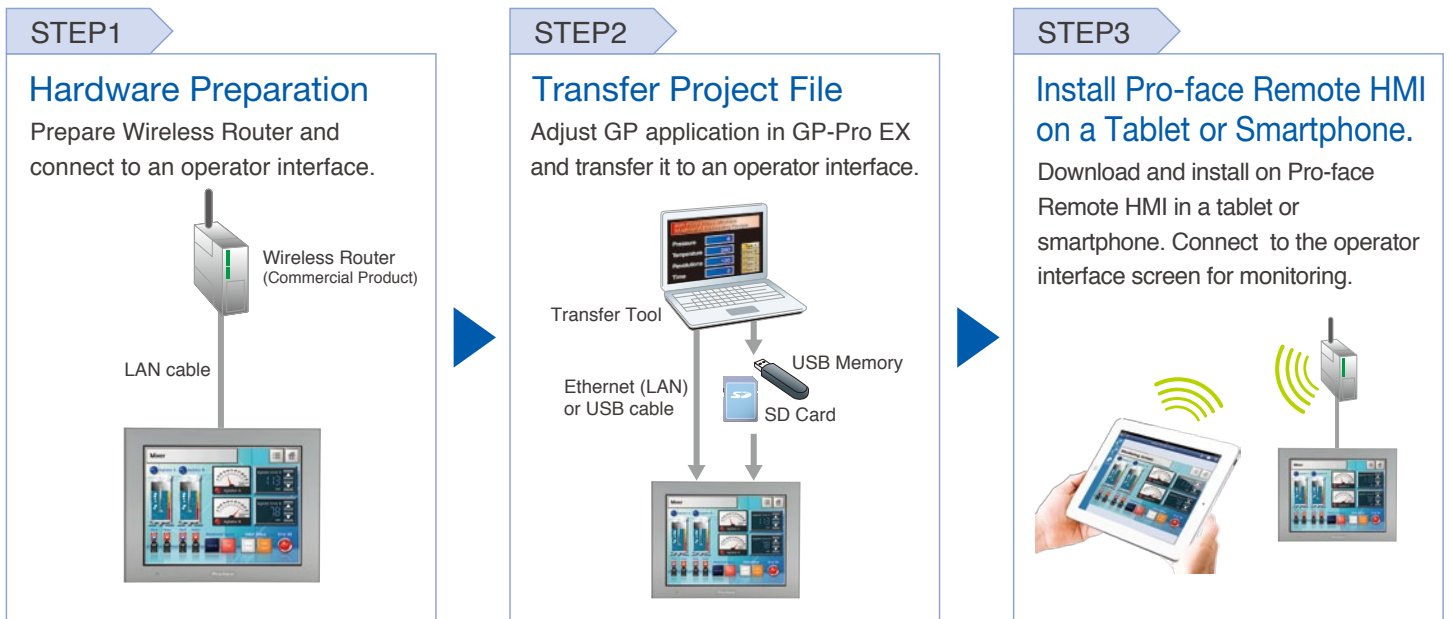



- **Synchronous and Asynchronous Operation Mode**
Supports synchronous and asynchronous operation modes which switch during operation.
- **Exclusive Touch Operation**
Setting the monopolize touch function prevents unexpected operational misuses caused by redundant operation.
- **Connect to Standard Windows based Systems**
Connect any PC or IPC to the Pro-face Remote HMI application and monitor or operate any kind of software.
- **Multi-client Function**
For checking the status of equipment from different points of view, multiple units can be operated simultaneously.
- **Remote Status Icon**
Checks the status of remote connection and touch monopoly.
- **Screen Shortcut**
Easily jumps among multiple applications.
- **Easy Monitoring with Mobile Functions**
Check and operate details of screen status.

For the further information, please visit our website.



Quick steps to use Pro-face Remote HMI




 **Pro-face Remote HMI Ver.1.42** Update

The Pro-face Remote HMI software can be purchased directly from App Store or Google Play via a mobile terminal anytime.

iOS: 7.0 or later / 8.0 or later / 9.0 or later

Android OS: Ver. 4.1 or later / Ver. 5.0 or later / Ver. 6.0 or later

 **Pro-face Remote HMI Server**

The Pro-face Remote HMI Server install program is stored in GP-Pro EX disk. To use the Pro-face Remote HMI Server, a separate license (PFEXRHSL) must be purchased.

⚠ WARNING

HAZARD OF OPERATOR INJURY, OR UNINTENDED EQUIPMENT DAMAGE

Before operating any of these products, be sure to read all related manuals thoroughly.

Failure to follow these instructions can result in death, serious injury or unintended equipment damage.

- For printing purposes, the colors in this catalog may differ from those of the actual unit.
 - Actual user screens may differ from the screens shown here.
 - Electric equipment should be installed, operated, serviced, and maintained only by qualified personnel.
 - All product names used in this catalog are the registered trademarks or trademarks of their respective companies.
 - All information contained in this catalog is subject to change without notice.
- No responsibility is assumed by Digital for any consequences arising out of the use of this material.

<p>Global Headquarters Digital Electronics Corporation Osaka, JAPAN Tel: +81 (0)6 6208-3133 Fax: +81 (0)6 6208-3136 www.pro-face.com info@pro-face.com</p>	<p>Taiwan Pro-face Taiwan Taipei, TAIWAN Tel: +886 (0)2 2657 1121 Fax: +886 (0)2 2657 1021 www.pro-face.com.tw proface@proface.com.tw</p>	<p>Australia and New Zealand Pro-face Australia Notting Hill, VIC AUSTRALIA Tel: +61 (0)3 9550 7396 Fax: +61 (0)3 9550 7390 www.pro-face.com.au / www.pro-face.co.nz pfau@pro-face.com</p>	<p>European Headquarters Pro-face Europe B.V. Hoofddorp, THE NETHERLANDS Tel: +31 (0)23 55 44 099 Fax: +31 (0)23 55 44 090 www.pro-face.eu info@pro-face.eu</p>	<p>France Pro-face France S.A.S. Mitry-Mory, FRANCE Tel: +33 (0)1 60 21 22 91 Fax: +33 (0)1 60 21 22 92 www.pro-face.fr info@pro-face.fr</p>	<p>Poland Pro-face Europe B.V.(Warsaw Office) Warszawa, POLAND Tel: +48 (22) 511 83 28 Fax: +48 (22) 511 82 02 www.pro-face.pl info@pro-face.pl</p>
<p>North America Pro-face America, Inc. Ann Arbor, MI U.S.A Tel: +1 734 477 0600 Fax: +1 734 864 7347 www.profaceamerica.com info@profaceamerica.com</p>	<p>India Pro-face India Bangalore, INDIA Tel: +91 80 4333 3540/3541 Fax: +91 80 4333 3222 www.pro-face.co.in sales.proface@proface.co.in</p>	<p>Austria Pro-face Europe B.V.(Austria Office) Leonding, AUSTRIA Tel: +43 732 6933-0 Fax: +43 732 6933-840 www.proface.at info@proface.at</p>	<p>Germany Pro-face Deutschland GmbH Solingen, GERMANY Tel: +49 (0)212 258 260 Fax: +49 (0)212 258 2640 www.proface.de info@pro-face.de</p>	<p>Spain and Portugal Pro-face España Cardedeu (Barcelona), SPAIN Tel: +34 (0)93 846 07 45 Fax: +34 (0)93 845 48 68 www.proface.es info@proface.es</p>	<p>Switzerland Pro-face Schweiz GmbH Ittigen BE, SWITZERLAND Tel: +41 (0)43 343 7272 Fax: +41 (0)43 343 7279 www.proface.ch info@proface.ch</p>
<p>China Pro-face China International Trading Co., Ltd. Shanghai, P. R. CHINA Tel: +86 (0)21 6361 5175 Fax: +86 (0)21 6361 5176 www.pro-face.com.cn proface@proface.com.cn</p>	<p>Singapore Pro-face Singapore TechPoint, Singapore Tel: +65-6832-5533 Fax: +65-6415-1605 www.pro-face.sg info@pro-face.sg</p>	<p>Belgium Pro-face Europe B.V. (Belgium Office) Bruxelles / Brussels, BELGIUM Tel: +32 (0)2 373 77 11 Fax: +31 (0) 23 55 44 090 www.proface.nl info@proface.nl</p>	<p>Italy Pro-face Italia S.p.a. Bovisio Masciago (Milano), ITALY Tel: +39 (0)362 59 96 1 Fax: +39 (0)362 59 96 69 www.proface.it info@proface.it</p>	<p>United Kingdom Pro-face UK Ltd CV4 7EZ, ENGLAND Tel: +44 (0)2476 847655 Fax: +44 (0)2476 847660 www.pro-face.co.uk info@pro-face.co.uk</p>	<p>South Korea Pro-face Korea Seoul, SOUTH KOREA Tel: +82 (0)2 2630 9850 Fax: +82 (0)2 2630 9860 www.pro-face.co.kr proface@proface.co.kr</p>
<p>South-East Asia Pacific Pro-face Thailand Bangkok, THAILAND Tel: +66 (0)2 617 5678 Fax: +66 (0)2 617 5688 www.pro-face.co.th pfsales@proface.co.th</p>	<p>Denmark Pro-face Northern Europe ApS Roskilde, DENMARK Tel: +45 70 22 01 22 Fax: +45 70 22 01 33 www.pro-face.dk info@pro-face.dk</p>	<p>The Netherlands Pro-face Netherlands Hoofddorp, THE NETHERLANDS Tel: +31 (0)23 55 44 094 Fax: +31 (0)23 55 44 090 www.pro-face.nl info@pro-face.nl</p>	<p>France Pro-face France S.A.S. Mitry-Mory, FRANCE Tel: +33 (0)1 60 21 22 91 Fax: +33 (0)1 60 21 22 92 www.pro-face.fr info@pro-face.fr</p>	<p>Spain and Portugal Pro-face España Cardedeu (Barcelona), SPAIN Tel: +34 (0)93 846 07 45 Fax: +34 (0)93 845 48 68 www.proface.es info@proface.es</p>	<p>Switzerland Pro-face Schweiz GmbH Ittigen BE, SWITZERLAND Tel: +41 (0)43 343 7272 Fax: +41 (0)43 343 7279 www.proface.ch info@proface.ch</p>



SCIGATE AUTOMATION (S) PTE LTD

No 1 Bukit Batok Street 22 #01-01 Singapore 659592
 Tel: (65) 6561 0488 Fax: (65) 6561 0588
 Email: sales@scigate.com.sg Web: https://scigate.com.sg/

Business Hours: Monday - Friday 8:30AM - 6:15PM