

HMI SERIES



The touch panel HMI device is used to monitor the variables detected by HART transmitters. The most typical application is the level monitoring of tanks for marine or industrial applications that require a dislocated control for their cisterns.

The HMI devices are used for monitoring and alarms management using the HART® communication protocol. It is possible to connect to the system up to 30 HART® compatible transmitters on two buses in multi-drop mode, while in mixed mode 30 HART® transmitters and 12 on/off switches (16 in the only On/Off version).

APPLICATION FIELDS

- HART® sensor management: configuration and calibration of the connected sensors;
- Tank and/or instruments parameter monitoring;
- Data Logger: all the collected data are available over the LAN or exportable via USB;
- Alarms Manager: with dedicated alarm logger;
- Total volumes and masses calculations;
- Remote access: it is possible to use the HMI with remote access over the LAN.




SCIGATE AUTOMATION (S) PTE LTD
 No.1 Bukit Batok Street 22 #01-01 Singapore 659592
 Tel: (65) 6561 0488 Fax: (65) 6562 0588
 Email: sales@scigate.com.sg Web: www.scigate.com.sg
 Business Hours: Monday - Friday 8.30am - 6.15pm

TECHNICAL FEATURES

Electrical parameters

Supply: 16 ÷ 32 Vdc
I=1÷0.5A max

Hardware

Processor: AMD Geode LX, 500MHz (LX800)

RAM Memory: 256 MB SDRAM

Memory: 4 GB SSD Disk
Compact flash

Watchdog: Yes

GPIO: 12 Input - (16 Input in the only On/Off version)

Notes: Fanless: passive heath dissipation

Input & Output

Ethernet: (RJ45) 10/100 Base-T

HART[®]: 2 Buses
Max 30 Sensors

RS232 / RS485: Optional Output

MODBUS: RS485
TCP/IP
UDP/IP

Input & Output: NPN open collector Fault, Horn & Beacon

Optoisolated Input & Output: Yes

Chassis

Buttons: Acknowledgement, Reset, Test

Screen: 8" LCD Colors
800x600
Touchscreen

Fault LED: Yes

Protection Rating: PX5 Front

Front Material: Anticorodal 6082 anodized

Chassis Material: AISI304 Steel

Buttons Material: Stainless Steel

TECHNICAL FEATURES

Software

Operative System: Microsoft Windows XP

Pre-installed: Valcom Hart Server
 HMI Software 2.0 Rev8.2

Environmental Conditions

Environment temperature: Standard: +5 ÷ +60 °C

LCD working temperature: -10 ÷ +60 °C

Storage temperature: -20 ÷ +75 °C

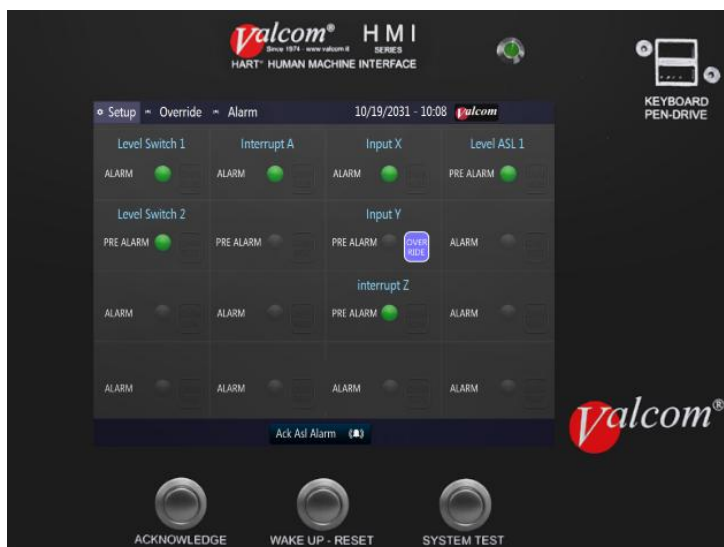
Relative Humidity Field: 0÷95% RH

MARKING

Type approvals

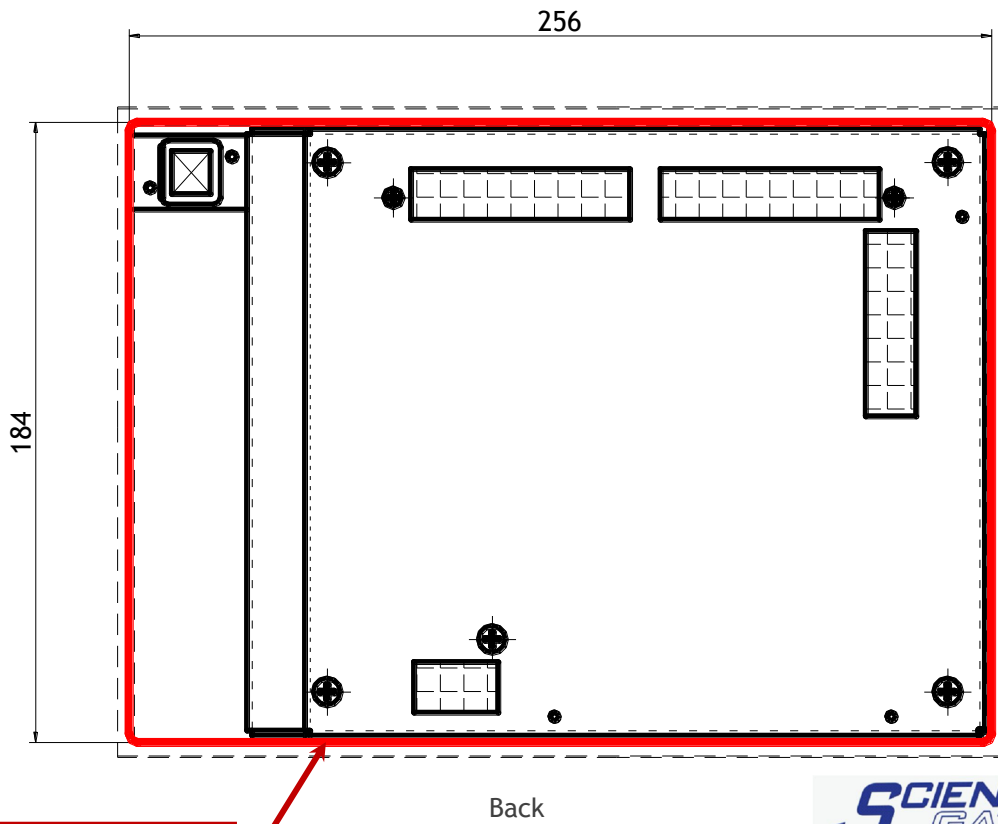
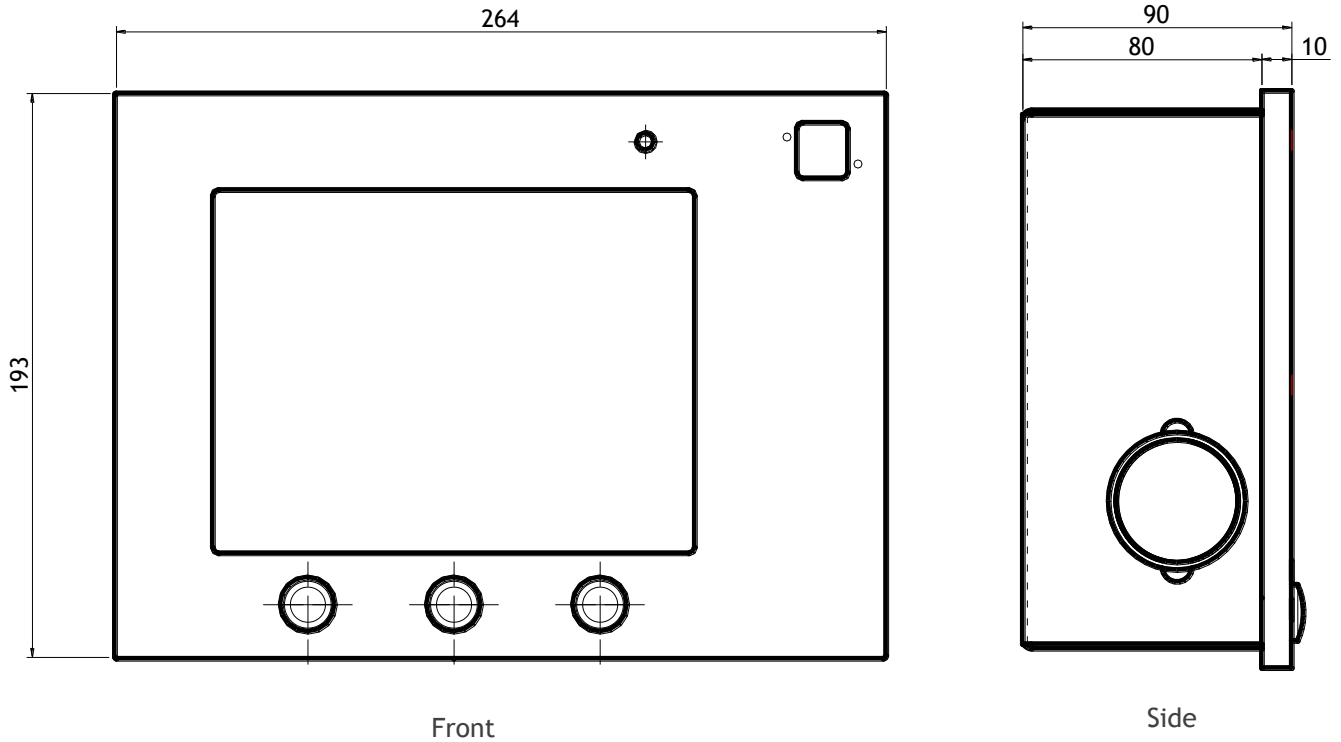
Marine type approval In compliance with applicable requirements of RINA type approval system

ON-OFF VERSION



The Valcom® HMI device can be used to manage up to 16 On-Off inputs, thus allowing you to manage a High & Overfill level alarm system for up to 8 tanks per unit.

DIMENSIONAL DRAWING



Panel drilling dimensions

SCIGATE AUTOMATION (S) PTE LTD
 No.1 Bukit Batok Street 22 #01-01 Singapore 659592
 Tel: (65) 6561 0488 Fax: (65) 6562 0588
 Email: sales@scigate.com.sg Web: www.scigate.com.sg
 Business Hours: Monday - Friday 8.30am - 6.15pm