

THP SERIES



Pneumatic transmitters THP series are designed in order to measure pipe pressures with dense, viscous and polymerizing liquids as paper pulp, cement muds, rubber latex and other various type chemical products. Process connection can be realized by using different configurations as flange, welding ring, screwed or clamp.

APPLICATION FIELDS

THP series pneumatic transmitters are used in industrial and marine applications to detect pressure of liquids, gas and vapors.

Our technical office is at your disposal for special applications.



SCIGATE AUTOMATION (S) PTE LTD

No.1 Bukit Batok Street 22 #01-01 Singapore 659592

Tel: (65) 6561 0488

Fax: (65) 6562 0588

Email: sales@scigate.com.sg

Web: www.scigate.com.sg

Business Hours: Monday - Friday 8.30am - 6.15pm

TECHNICAL FEATURES

Parameters

Measuring principle:	Forces balancing system
Pneumatic relay:	Continuous loss, patented
Pneumatic connections:	1/8" NPT-F
Process connections:	Flange or Screw Welding Ring Clamp Other on request
Supply:	1.5 bar 22 psi
Output signal:	0.2 ÷ 1 bar 3 ÷ 15 psi
Air consumption:	250 NL/h max.

Measurement performance

Measuring range:	Min: 0 ÷ 1.5 bar Max: 0 ÷ 8 bar
Calibration accuracy:	± 0.5 % FS
Linearity:	± 0.5 % FS
Hysteresys:	± 0.1 % FS
Repeatability:	± 0.1 % FS
Overpressure:	18 bar
Supply pressure drift:	± 0.1 % / psi
Zero thermal drift:	± 0.4 % / 10 °C

Environmental Conditions

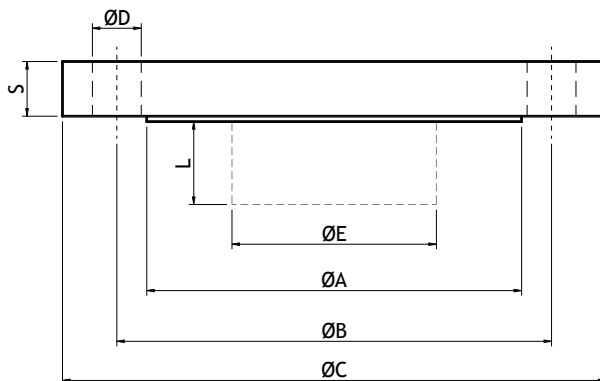
Ambient temperature:	-20 ÷ +80 °C
Process temperature:	-10 ÷ +80 °C
Storage temperature:	-25 ÷ +80 °C

Materiali \ Materials

Housing and basement:	Painted Aluminum alloy
Diaphragm seals:	Viton - PTFE

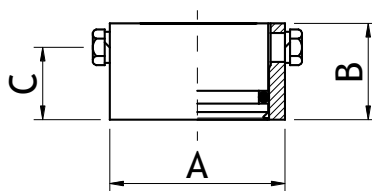
PROCESS CONNECTIONS

Standard flanges



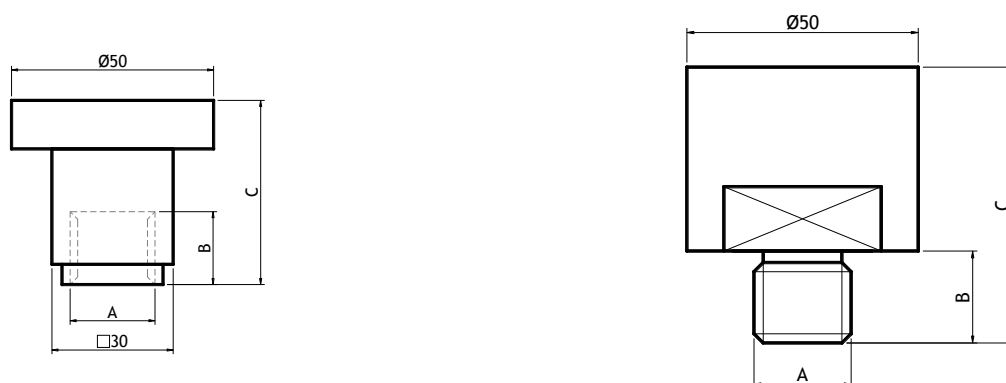
Code	DN	PN	ØA [mm]	ØB [mm]	ØC [mm]	ØD [mm]	S [mm]
C06	25	10/16	68	85	115	14	16

Welding Rings



Code	A [mm]	B [mm]	C [mm]
C07	Ø45	30	22.5

Standard screws



Codee	A [mm]	B [mm]	C [mm]	Ex Ch.
C08	1/2" G-F	18	42	30
C09	1/2" G-M	20	60	35

ORDERING CODE

THP	Pneumatic pressure transmitter
01 Output	
<input type="checkbox"/>	J05 Output: 3÷15 psi
<input type="checkbox"/>	J06 Output: 0.2÷1 bar
02 Measuring range	
<input type="checkbox"/>	E00 0÷1.5...8 bar
<input type="checkbox"/>	ZZZ Special
03 Wetted parts material	
<input type="checkbox"/>	D01 AISI 316
<input type="checkbox"/>	ZZZ Special
04 Seal gasket	
<input type="checkbox"/>	A00 Viton
<input type="checkbox"/>	A01 Other
05 Process connection	
<input type="checkbox"/>	C05 Screwed 1" G-M
<input type="checkbox"/>	C06 DN25 PN 10/16
<input type="checkbox"/>	C07 Welding ring Ø45
<input type="checkbox"/>	C08 Screwed 1/2" G-F
<input type="checkbox"/>	C09 Screwed 1/2" G-M
<input type="checkbox"/>	Z99 Other
06 Housing material	
<input type="checkbox"/>	A00 TFE painted Aluminum

DIMENSIONAL DRAWINGS

