

VCM SERIES CONNECTORS



SCIGATE AUTOMATION (S) PTE LTD

No.1 Bukit Batok Street 22 #01-01 Singapore 659592

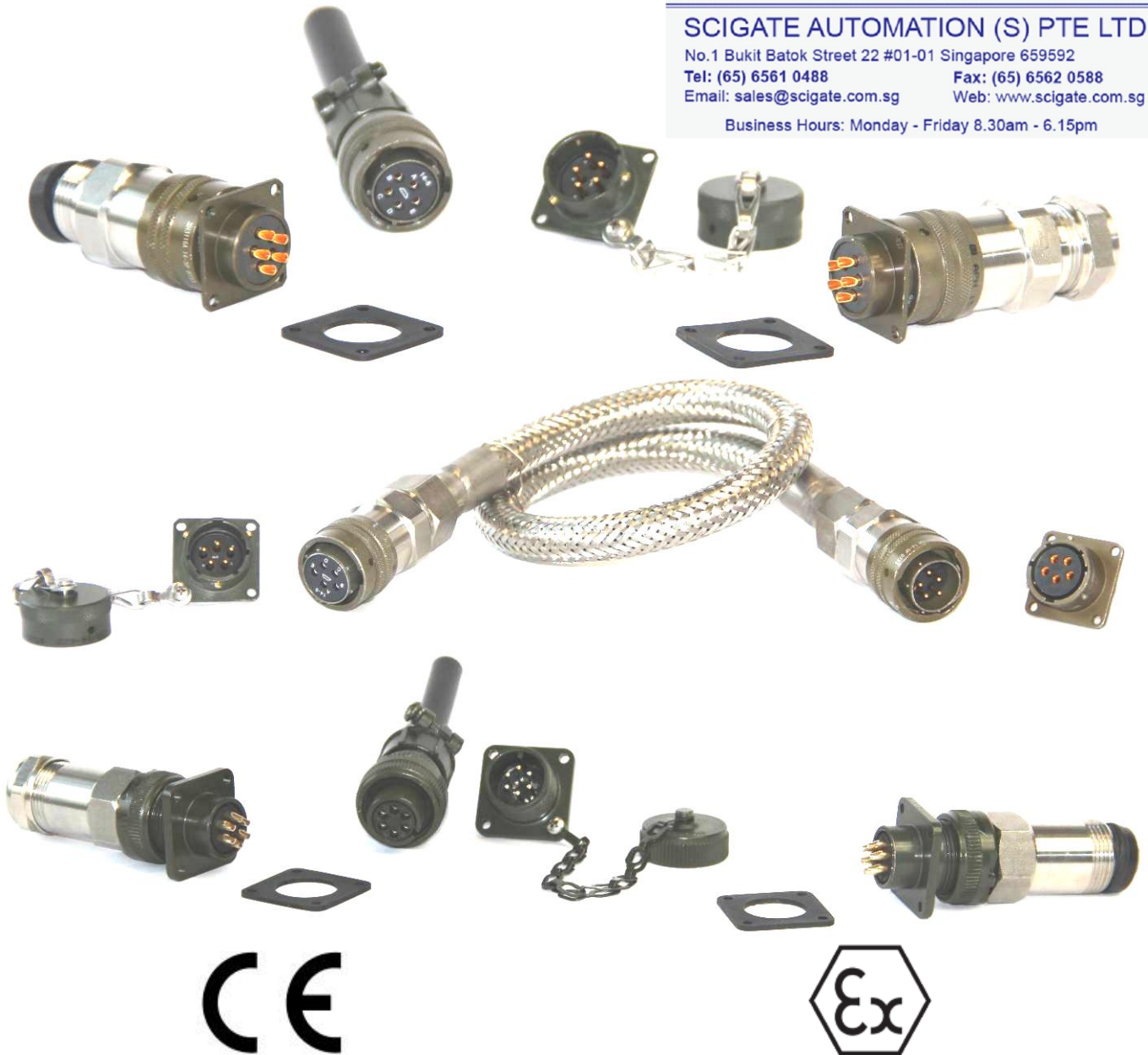
Tel: (65) 6561 0488

Fax: (65) 6562 0588

Email: sales@scigate.com.sg

Web: www.scigate.com.sg

Business Hours: Monday - Friday 8.30am - 6.15pm



The Valcom Connectors VCM are two series of connectors designed to meet the operational requirements of the ATEX Directive.

Although the two models of the VCM series are equipped with identical insertion devices and other similar components, the two series differ in the coupling type: threaded or bayonet.

These connectors are mainly used in industrial applications that require specific levels of security against explosions, and are highly resistant to shock and vibration.

TECHNICAL FEATURES

Electrical parameters

Number of contacts:	I5: 5 contacts I6: 6 contacts
Current rating:	13 A
Voltage rating:	250 Vdc \ 200 Vac
Insulation resistance:	> 1 GOhm
Wire range:	AWG 20÷16
Coupling type:	I5: bayonet I6: threaded

Environmental Conditions

Ambient temperature:	-40 ÷ +85 °C
Storage temperature:	-40 ÷ +85 °C
Ingress protection degree:	IP67

Notes

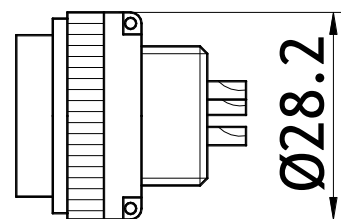
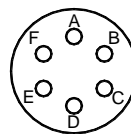
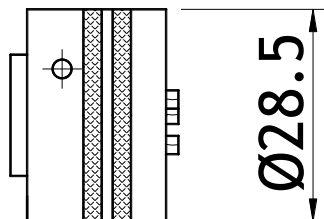
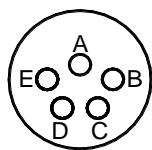
APPROVALS

Type approvals

Directive 2014/34/EU (ATEX)

I5: II 2G Ex e IIC TX Gb
I6: II 3G Ex e IIC TX Gc

INLINE RECEPTACLE



I5 Inline bayonet-coupled

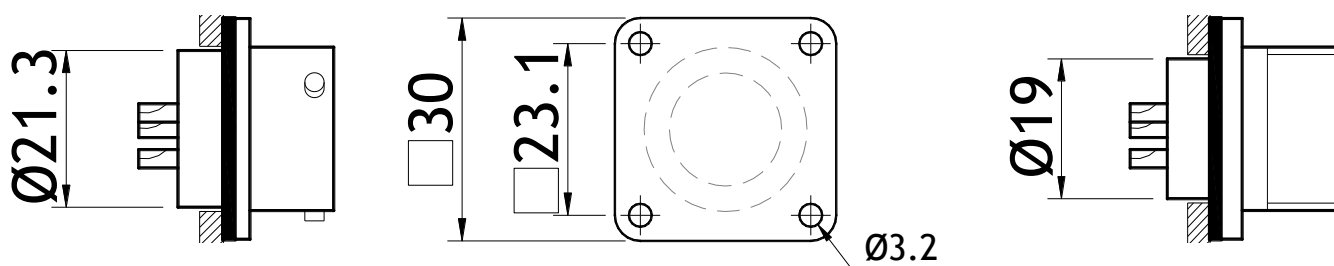
I6 Inline threaded

MOUNTING RECEPTACLE

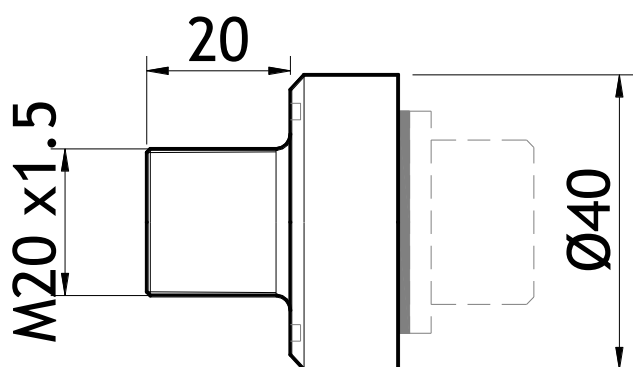


15 version

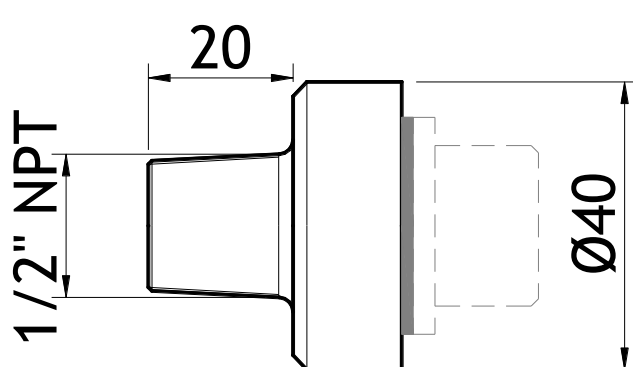
16 version



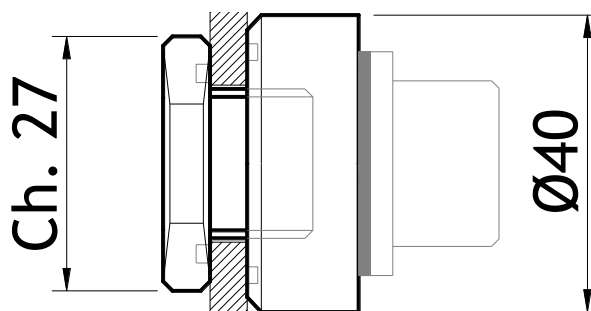
MFx Mountable flanged



MMx Mountable threaded M20-M x 1,5

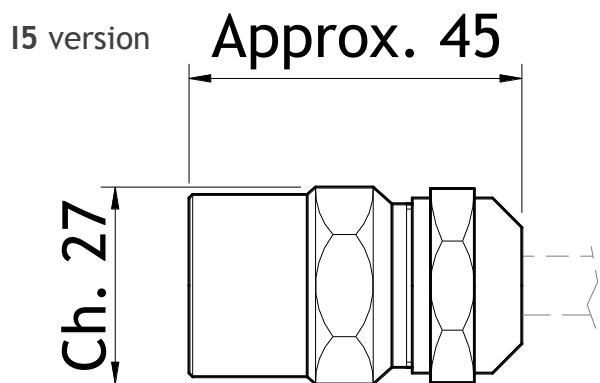


MNx Mountable threaded 1/2" NPT-M

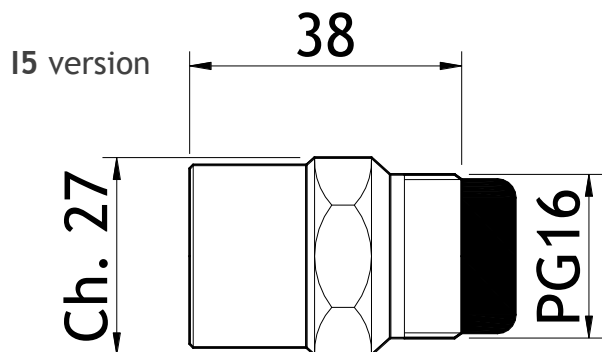
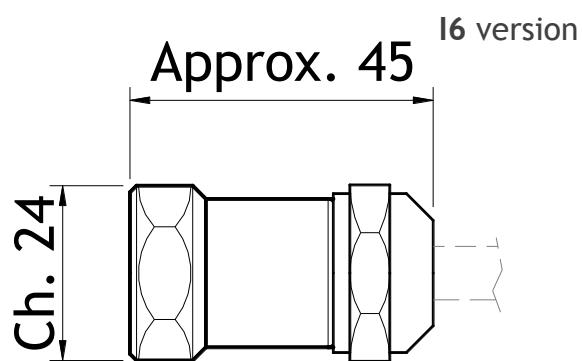


MPx Mountable threaded PG16-F + locknut

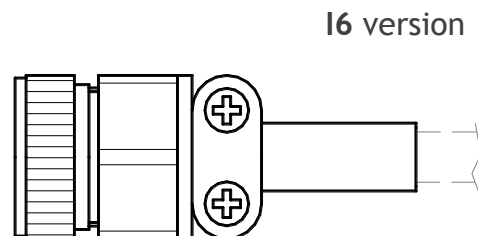
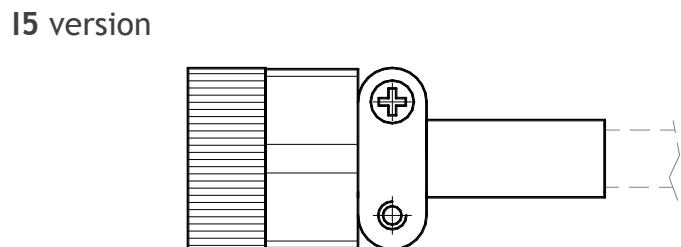
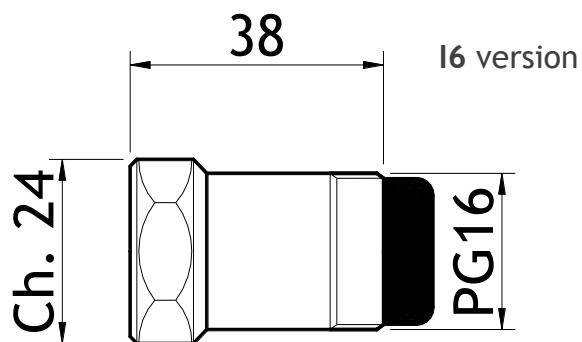
CABLE GLAND



GAI AISI 316 cable gland

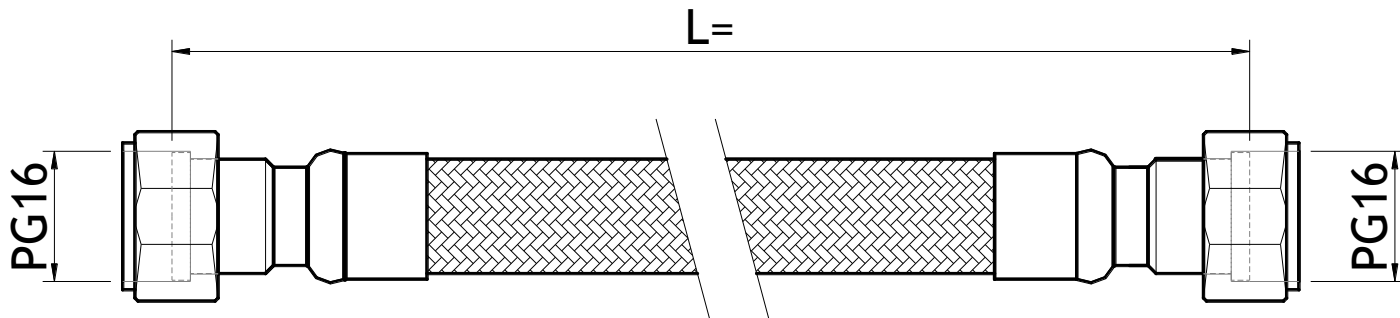


GAR AISI 316 Cable Gland for armour

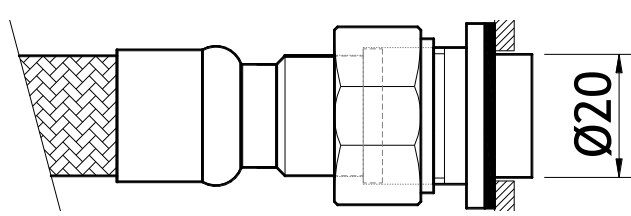


GAL Aluminum strain relief

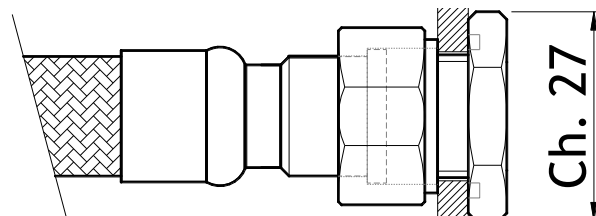
ARMOUR



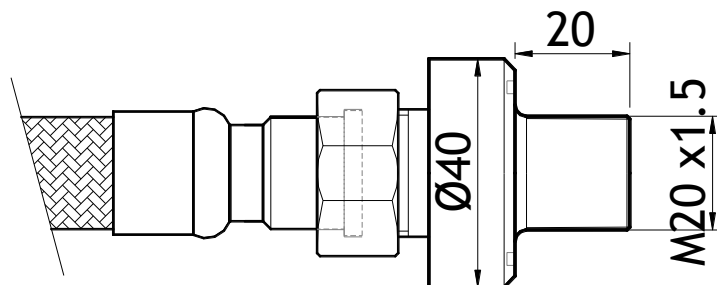
A##
Armour without Locknut



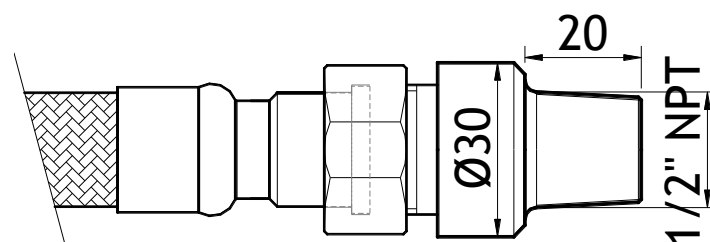
F##
Armour + Flanged Wall Clamp



I##
Armour + Clamp Internal Locknut PG16-M

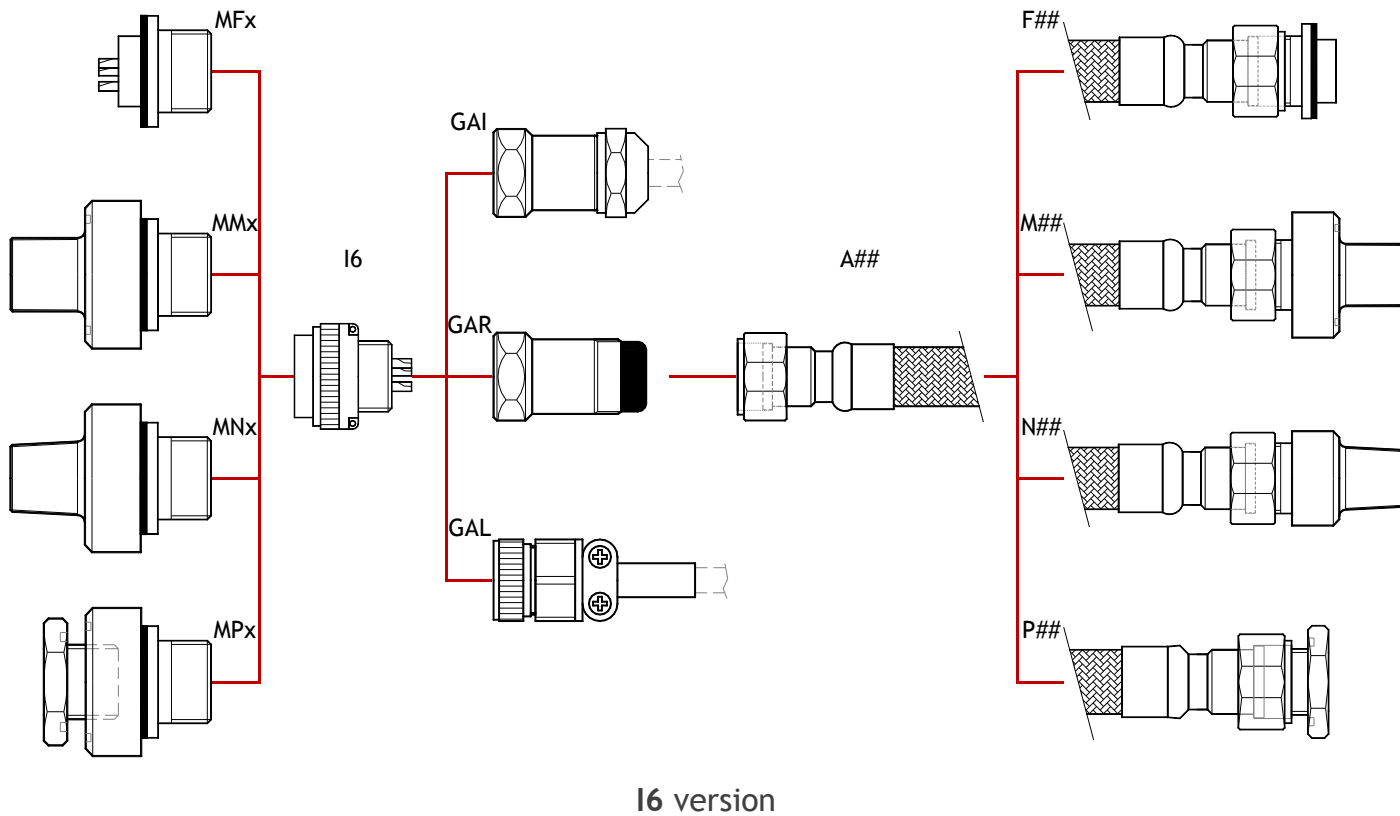
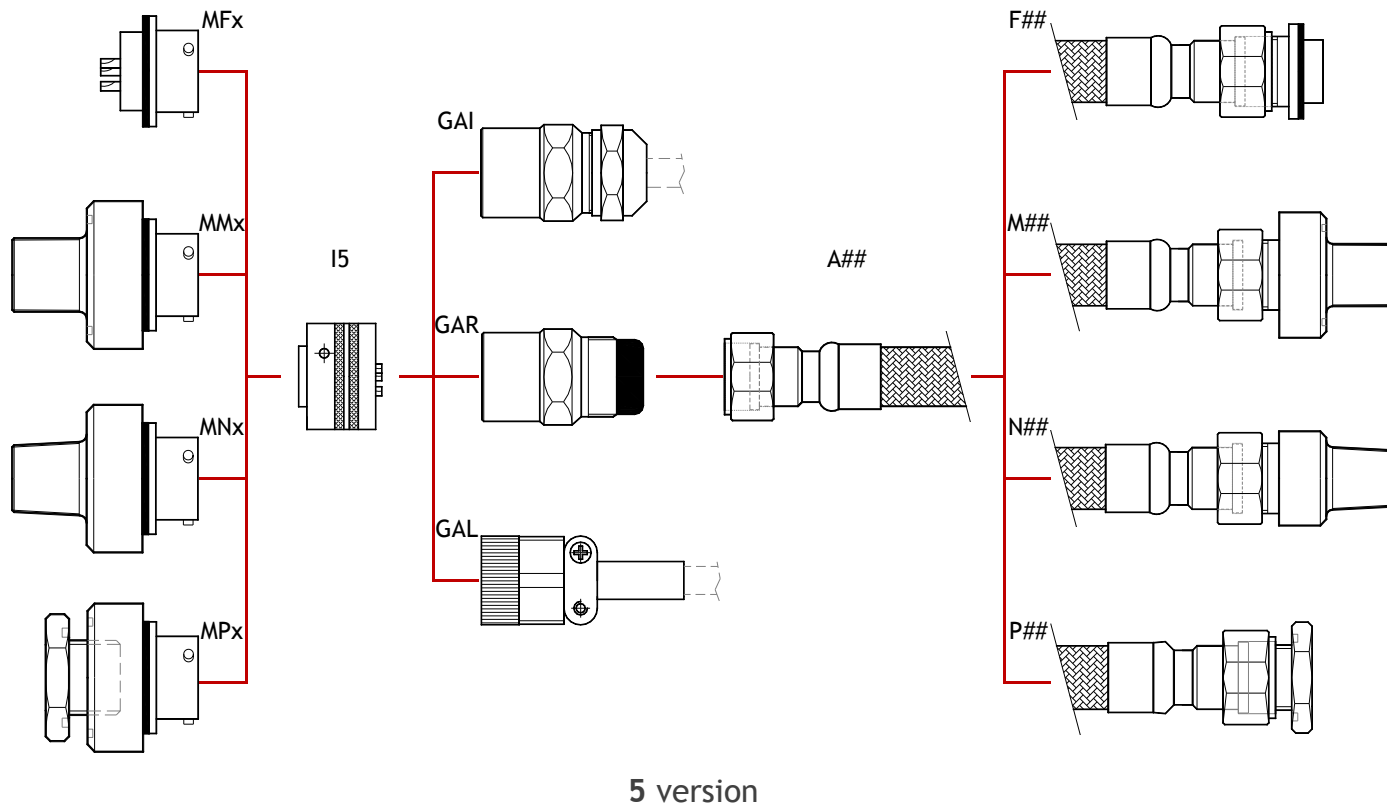


M##
Armour + External Locknut M20-M x 1,5



N##
Armour + External Locknut 1/2" NPT-M

CONSTRUCTION SCHEME



ORDERING CODE

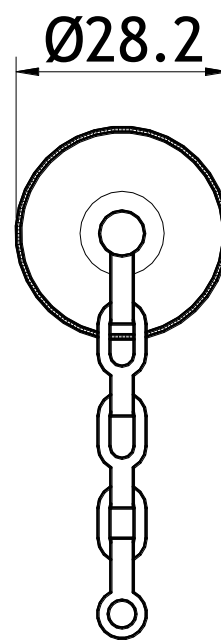
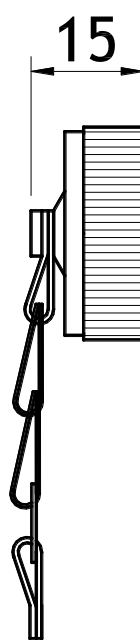
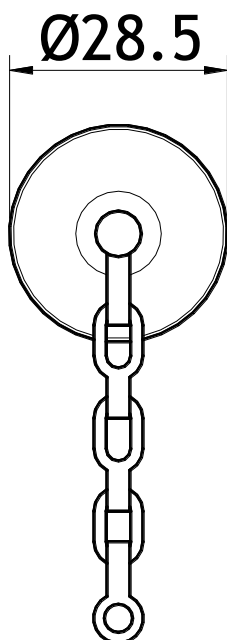
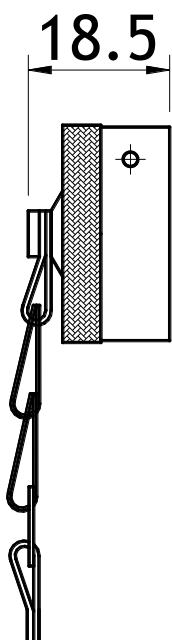
01 Instrument name	
<input type="checkbox"/>	VCM Valcom Connector
02 Description 1	
<input type="checkbox"/>	MFP Mountable flanged (plug)
<input type="checkbox"/>	MFS Mountable flanged (socket)
<input type="checkbox"/>	MMP Mountable threaded M20-M x 1,5 (plug)
<input type="checkbox"/>	MMS Mountable threaded M20-M x 1,5 (socket)
<input type="checkbox"/>	MNP Mountable threaded 1/2" NPT-M (plug)
<input type="checkbox"/>	MNS Mountable threaded 1/2" NPT-M (socket)
<input type="checkbox"/>	MPP Mountable threaded PG16-F + Locknut (plug)
<input type="checkbox"/>	MPS Mountable threaded PG16-F + Locknut (socket)
03 Description 2	
<input type="checkbox"/>	I5 Inline bayonet-coupled, five pins Ex 2G Ex e IIC TX Gb
<input type="checkbox"/>	I6 Inline threaded, six pins Ex II 3G Ex e IIC TX Gc
04 Description 3	
<input type="checkbox"/>	GAI AISI 316 cable gland (cable Ø 6.5÷13)
<input type="checkbox"/>	GAL Aluminum strain relief (cable Ø 9÷13 for I5 version or Ø 6,5÷8 for I6 version)
<input type="checkbox"/>	GAR AISI 316 Cable Gland for armour (cable Ø 6.5÷13)
05 Description 4	
<input type="checkbox"/>	A## With Armour (length to be specified in meters) without Locknut
<input type="checkbox"/>	F## With Armour (length to be specified in meters) + Flanged Wall Clamp
<input type="checkbox"/>	I## With Armour (length to be specified in meters) + Clamp Internal Locknut PG16-M
<input type="checkbox"/>	M## With Armour (length to be specified in meters) + External Locknut M20-M x 1,5
<input type="checkbox"/>	N## With Armour (length to be specified in meters) + External Locknut 1/2" NPT-M
<input type="checkbox"/>	W00 Without armour

ACCESSORIES



15 version

16 version



Metallic dust covers



Ex d explosion-proof connectors



Ex ia AISI 316 junction boxes