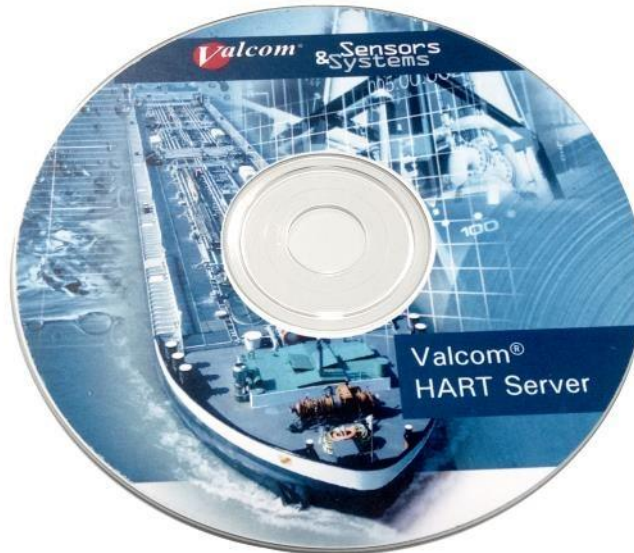


VALCOM HART[®] SERVER



The Valcom[®] HART[®] Server is an application software that allows the user to access the process and diagnostic data available on HART[®] field transmitters. It has been developed with the HART[®] (FieldComm Group[™]) protocol.

The Valcom[®] HART[®] Server can be used with any HART[®] instruments of any manufacturer and the read data from the field are easily accessible by the operator.

With the Valcom[®] HART[®] Server is supplied an interface that allows the management of the whole instrumentation parameters as well as the recording of the measure with the integrated Data Logger feature.

APPLICATION FIELDS

- HART[®] sensor management: configuration and calibration of the connected sensors
- Data Logger: all the collected data are locally available or exportable via USB



SCIGATE AUTOMATION (S) PTE LTD

No.1 Bukit Batok Street 22 #01-01 Singapore 659592

Tel: (65) 6561 0488

Fax: (65) 6562 0588

Email: sales@scigate.com.sg

Web: www.scigate.com.sg

Business Hours: Monday - Friday 8.30am - 6.15pm

TECHNICAL FEATURES

System Requirements

Supported Systems Microsoft Windows (from XP up to version 10)

Framework .NET Minimum Version 4.0

USB Interface HART[®] USB or HART[®] RS232

Input & Output

Supported HART[®] Instruments 15 Sensors for each Bus

Features

Set Zero Yes

Set 4÷20 mA Span Yes

Damping Value Yes

PV measure Unit Yes

SV, TV, FV measure Unit No

Set Alarm Mode Yes

Loop Test Yes

DAC Trim Yes

Other Features

Transmitter TAG, Polling Address and ID direct configuration feature

Quality of transmission diagnostics

Parallel displayed in real-time all the data from the transmitters connected to each loop

Data Logger feature to record the data

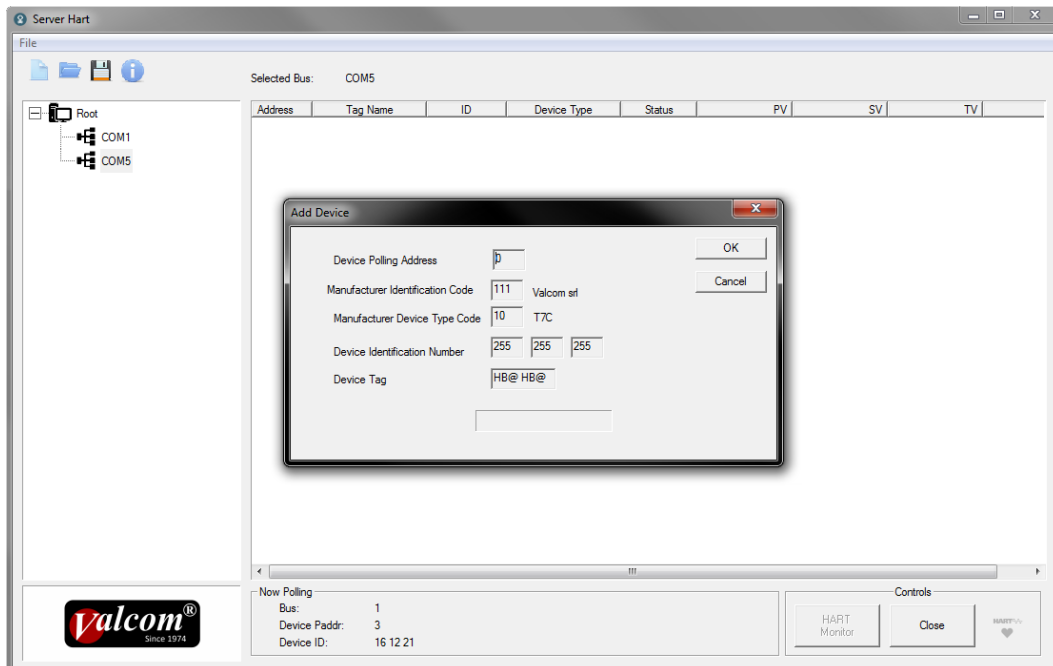
Dedicated Valcom[®] transmitter windows, with specific command implemented for every series of instruments

Universal windows to be used with any HART[®] transmitter, from any manufacturer

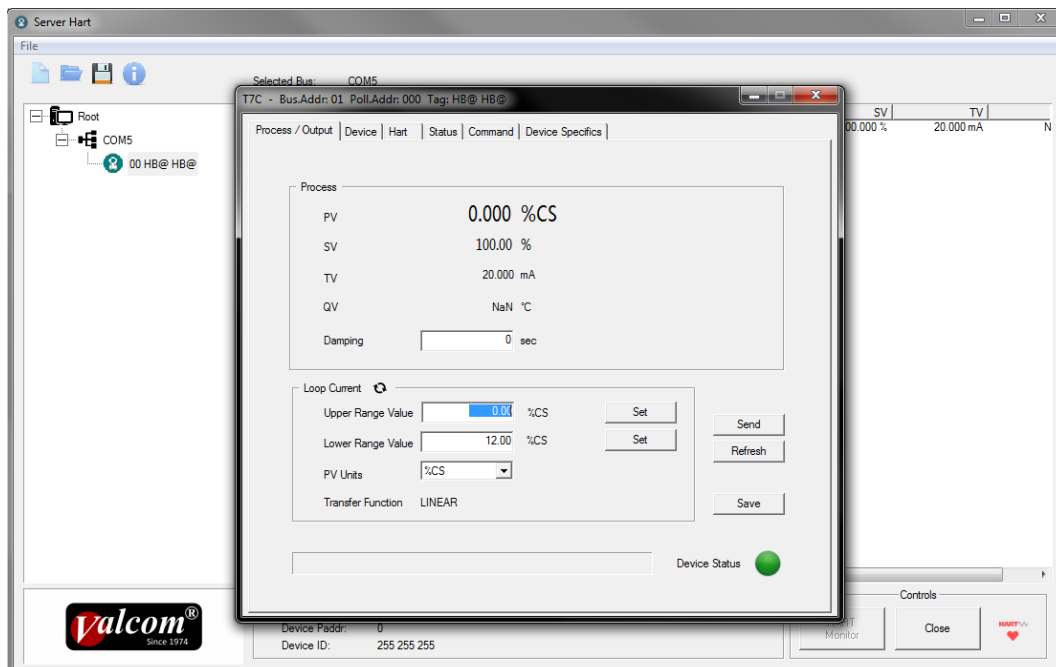
Display the table of the process variables (PV, SV, TV, QV) with relative measure units, TAG and description

Ability to send HART[®] specific commands

SCREENSHOTS



Instrument Recognition

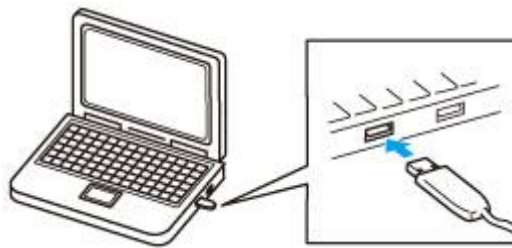


Instrument Page

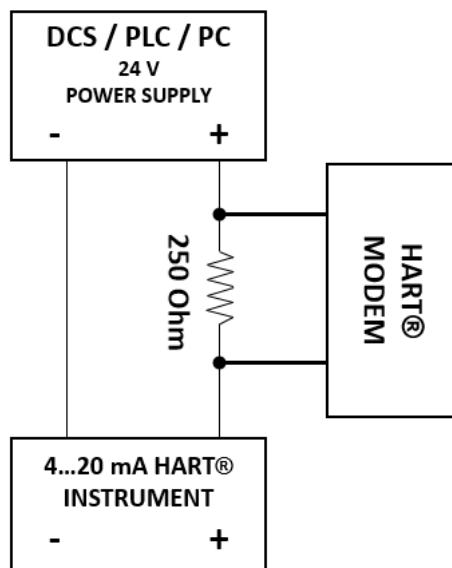


HART® MODEM
 (Sold Separately)

In order to communicate with your HART® instruments you have to connect the HART® modem to your PC USB port.



To connect the instrument to the HART® modem you need also a 250 Ohm resistance. Please refer to the below scheme:



SCIGATE AUTOMATION (S) PTE LTD
 No.1 Bukit Batok Street 22 #01-01 Singapore 659592
 Tel: (65) 6561 0488 Fax: (65) 6562 0588
 Email: sales@scigate.com.sg Web: www.scigate.com.sg
 Business Hours: Monday - Friday 8.30am - 6.15pm